



2012 BAY STAR SPORT
NEWMAR QUALITY, WITHIN REACH

EVERYTHING YOU NEED TO START MOTORHOMING – IN A VERY SMART PACKAGE.

With the all new 2012 Bay Star Sport, you get Newmar quality with a surprisingly affordable price in four family friendly floorplans. Whether you're new to motorhoming or a first time Newmar buyer, this is your moment.

MAIN LIVING AREA AND KITCHEN

Bay Star Sport's main living area, with standard Flexsteel® Delux leather furniture and a large LCD TV, feels more opulent than you'd expect to find in this price range. Its mini-peninsula kitchen features finely crafted Monterey Maple* raised panel cabinetry and extra counter space for food prep or entertaining.

* Monterey Maple is optional

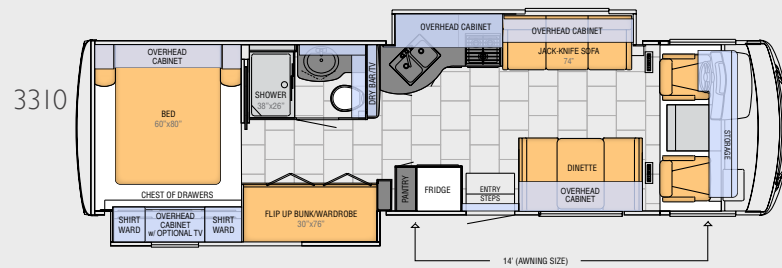
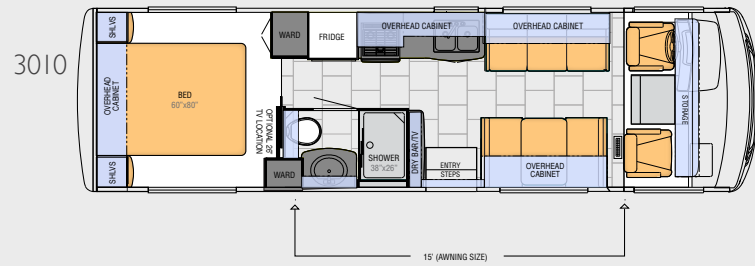
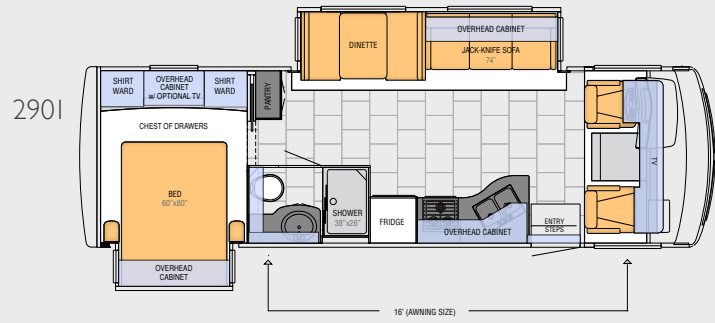
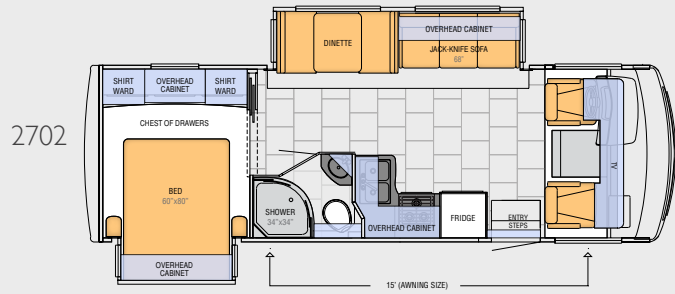


KITCHEN



MAIN LIVING

BAY STAR SPORT FLOORPLANS



BAY STAR SPORT EXTERIOR OPTIONS



Sherwood



Sherwood with optional paint



Nottingham



Nottingham with optional paint

CHASSIS FEATURES

- Ford F-53 18,000 lb. Chassis (27' - 29' floorplans)
- Ford F-53 20,500 lb. Chassis (30' - 33' floorplans)
- Cruise Control
- Tilt Steering Wheel
- Stainless Steel Wheel Simulators

AIR CONDITIONING & HEATING

- 13.5M Brisk® Central Air Conditioner
- Dash Heater and Air Conditioner
- Propane Gas Furnace with Ducted Heat
- Propane Leak Detector

APPLIANCES & ACCESSORIES

- Dometic 6 Cu Ft, Refrigerator
- 1.2 Cf Microwave on Most Floorplans, 22" Spacesaver on 3310
- 3 Burner Range with Glass Oven Door
- 6 Gallon Gas Water Heater with Direct Spark Ignition
- Am/Fm Dash Radio with Cd Player with Auxiliary Jack
- Cable TV Connection
- LCD TV in Living Area, TV Sizes Vary Per Floorplan
- Range Hood with Light & Fan
- Rear View Color Monitor System with Audio
- Roof Mounted Digital TV Antenna with Power Booster
- Wood Paneling Refrigerator Front

CABINETS & FURNITURE

- Flexsteel Delux Leather; Non Power Driver/Passenger Seats that Rotate and Recline
- Empire Maple Square Raised Panel Cabinet Doors on Overheads and Flat Panel Doors on Base Cabinets
- Drawers with Full Extension Guides
- Flexsteel Delux Leather Sofa
- Laminate Countertop In Bath with Acrylic Sink
- Laminate Countertop in Kitchen with Stainless Steel Sink

- Laminate Countertop on Bedroom Nightstands and Chests
- Lifts on Bed Top
- Smooth Top Mattress

ELECTRICAL FEATURES

- 2 - 12 Volt House Batteries
- 110 Volt Exterior Recept in Door Side Storage Compartment
- 12 Volt Auxiliary Recept on Dashboard
- 30 Amp Electrical Service with Flexible Cord
- 4.0 Kw Onan Generator with One Remote Switch and Automatic Changeover
- 45 Amp Converter
- Daytime Running Lights
- Emergency Engine Start Switch
- Incandescent Ceiling Lights
- Manual Battery Disconnect Switch for House Battery
- Manually Operated Hold to Run Slideout Switch
- TV Jack on the Exterior Door Side of Unit

EXTERIOR FEATURES

- Assist Handle at Entrance Door
- Automatic Step for Entrance Door
- Convex Exterior Mirrors
- Exterior Storage Compartments with Painted Finish
- Gelcoated Exterior Sidewalls, with Fiberglass Front and Rear Caps
- Lighted Exterior Storage Compartments
- Mud Flaps
- Rear Hitch for Towing Car
- Undercoating

INTERIOR FEATURES

- Carpeting in Living Room and Bedroom Areas
- 10 Bc Fire Extinguisher; Carbon Monoxide and Smoke Detectors
- Dash Panel Color Coordinated Abs
- Inlaid Six Panel Design Interior Passage Doors
- Interior Assist Handle at Main Entry Door

- Pleated Window Shades
- Quilted Bedspread with Accent Pillow
- Vinyl Covered Ceiling Panels
- Vinyl Floor in Kitchen, Foyer and Bathroom
- Wrap Around Windshield Area Privacy Shade

PLUMBING & BATH FEATURES

- Abs Shower Surround with Shower Door
- Demand Water System
- Monitor Panel
- Sewage Holding Tank Rinse
- Dometic® Stool with China Bowl
- Water Heater Bypass System

CONSTRUCTION FEATURES

- 5/8" Foam Insulation Laminated in Sidewalls & Ceiling
- Aluminum-Frame Sidewalls & Roof Construction, 16" on Center
- Brite Tek Roof with "Walkable" Decking And Radius Aluminum Roof Wrap

WINDOWS, AWNINGS & VENTS

- Dometic 8500 Side Awning
- One Piece Tinted Windshield
- Power Vent in Bathroom
- Shower Skylight
- Single Pane Tinted Safety Glass Windows

OPTIONS

GRAPHICS & DECOR

- Nottingham - Exterior Vinyl Tape Graphics
- Nottingham - Exterior Vinyl Tape Graphics with Painted Skirt and Mask
- Nottingham - Interior Decor
- Sherwood - Exterior Vinyl Tape Graphics
- Sherwood - Exterior Vinyl Tape Graphics With Painted Skirt and Mask
- Sherwood - Interior Decor

AIR CONDITIONING & HEATING

- 15M Penguin Heat Pump Air Conditioner in Place of Standard Air Conditioning & Heating
- Driver/Passenger Overhead Dash Fans
- Extra 13.5M Brisk Air Conditioner, 5.5 Onan Generator, 50 Amp*

APPLIANCES & ACCESSORIES

- 26" LED/LCD TV in Bedroom
- DVD Player with Coax Switcher
- Satellite Dish Prep for Roof Top Satellite

CABINETS & FURNITURE

- Flex O Bed Sofa with Air Mattress on off Door Side
- Monterey Maple Cabinets

ELECTRICAL FEATURES

- 600 Watt Inverter for Both Living and Bedroom Area TV

EXTERIOR FEATURES

- Convex Exterior Mirrors with Defrost and Remote Control
- Hydraulic Leveling Jacks
- Rear Ladder

WINDOWS, AWNINGS & VENTS

- 12 Volt Power Vent in Kitchen Area
- 2 Slideout Covers
- Bunk Windows
- Dometic 9100 Power Side Awning



BATH & SHOWER



BEDROOM

BATH & SHOWER

Your Bay Star Sport's bathroom feels like home, from its privacy glass shower door to the warmth of its Monterey Maple* radius lavatory cabinet. This definitely feels like a Newmar!

BEDROOM

This comfy bedroom boasts a padded, suede-like headboard and Monterey Maple* raised panel surrounding cabinetry. Soft earth tone linens and an optional 26" LCD TV add to its restful atmosphere.

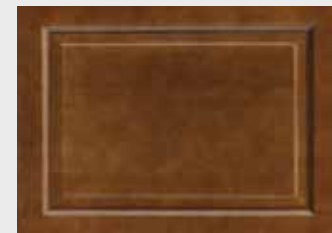
*Monterey Maple is optional



Sherwood



Nottingham



Monterey Maple



Empire Maple

BAY STAR SPORT FLOOR PLAN SPECIFICATIONS

Floor Plan	App. Overall Length	Width	App. Overall Height	Interior Width	Interior Height	Grey	Sewage	Water	Propane	Furnace
2702	27' 10"	101.5"	12' 4"	95.5"	80"	60 gal.	40 gal.	75 gal.	25 gal.	30,000 btu
2901	29' 11"	101.5"	12' 4"	95.5"	80"	60 gal.	40 gal.	75 gal.	25 gal.	30,000 btu
3010	29' 11"	101.5"	12' 4"	95.5"	80"	60 gal.	40 gal.	75 gal.	25 gal.	30,000 btu
3310	33' 11"	101.5"	12' 4"	95.5"	80"	60 gal.	40 gal.	75 gal.	25 gal.	30,000 btu

CHASSIS SPECIFICATIONS

Floorplan	Engine HP	Axle Ratio	Fuel Cap.	Wheelbase	Front GAWR*	Rear GAWR*	GVWR*	GCWR*	App. UVW	App. NCC
2702	362	4.88	80 gal.	172	7,000 lb.	12,000 lb.	18,000 lb.	26,000 lb.	15,482 lb.	2,518 lb.
2901	362	4.88	80 gal.	190	7,000 lb.	12,000 lb.	18,000 lb.	26,000 lb.	16,300 lb.	1,700 lb.
3010	362	5.38	80 gal.	190	7,500 lb.	13,500 lb.	20,500 lb.	26,000 lb.	16,963 lb.	3,537 lb.
3310	362	5.38	80 gal.	208	7,500 lb.	13,500 lb.	20,500 lb.	26,000 lb.	17,400 lb.	3,100 lb.

Lengths, heights, widths and dry weights are approximate. Weight will vary based on optional equipment added to the above base weight.

GAWR: Gross Axle Weight Rating is the maximum permissible weight for an axle.

GVWR: Gross Vehicle Weight Rating is the maximum permissible weight for a fully loaded motor coach.

GCWR: Gross Combination Weight Rating is the value specified by the manufacturer of the vehicle as the maximum allowable loaded weight of this motor coach and any towed trailer or towed vehicle.

UVW: Unloaded Vehicle Weight is the weight of this motorcoach as built at the factory with full fuel, engine oil and coolants. The UVW does not include cargo, fresh water, propane gas or dealer-installed accessories.

NCC: Net Carrying Capacity is the maximum weight of all occupants, including the driver, personal belongings, food, fresh water, waste water, propane gas, tools, tongue weight of towed vehicle, dealer-installed accessories, etc., that can be carried by the motorcoach.

*Specifications supplied by the chassis manufacturer.



THE NEWMAR KOUNTRY KLUB is an exclusive club for owners of fine Newmar products that offers many advantages and benefits to its members. Learn more at: www.newmarkountryklub.com.

ESTABLISHED OVER 40 YEARS AGO, Newmar is an innovator and leader in the RV manufacturing industry. Its quality craftsmanship is recognized nationally. The Newmar dealer network spans across the United States and Canada. Call 1-800-860-0086 to be our guest for a factory tour.

NEWMAR EXPRESS LIMITED WARRANTY

Every Bay Star Sport Gas Motor Home is backed by Newmar's one-year limited warranty/unlimited miles. Ask your Newmar dealer for details.

LIMITED FIVE-YEAR STRUCTURAL WARRANTY

If any part of your Newmar recreational vehicle superstructure (which is the steel/aluminum structure of the sidewall, roof or frame) fails to perform properly within five years from the date of purchase because of faulty workmanship or material supplied by Newmar, it will be repaired without charge for either parts or labor by Newmar. This structural warranty is available only to the original purchaser and is non-transferable.

Some features in our literature are optional. Colors and finishes are photographic representations. The actual materials may look different. Prices, specifications and floorplans are subject to change at Newmar's discretion, without prior notice or obligation. Please see your dealer for actual samples and specifications.



Mahlon Miller, Newmar founder, and his wife, Irene Miller, Newmar president, and his wife, Pam

The quiet, energetic farm town of Nappanee, Indiana is home to Newmar's owners, the Miller family. They are actively engaged in its operations, embracing employees, suppliers, dealers and customers as part of the Newmar family. The family has grown since 1968 but continues to strive for faithfulness to the tenets of its founders, including a strong community, bearing burdens for others, forgiveness, fairness, honesty, integrity, and peace with one's neighbors.



WHEN YOU KNOW THE DIFFERENCE™

NEWMAR CORPORATION
355 N DELAWARE ST, PO BOX 30
NAPPANEE IN 46550-0030
574-773-7791 Fax 574-773-2895

www.newmarcorp.com