



2027 NEW AIRE



MODERN. REFINED. AGILE.

WHY NEW AIRE

The 2027 New Aire offers a refined approach to luxury travel, blending premium comfort with a smart 35-foot design. All-new lifecycle updates—including refreshed leather furnishings and updated décor—bring a modern, elevated feel throughout the coach. Thoughtful layouts, upscale finishes, and advanced technology create an experience that feels spacious and effortless, while its nimble size allows access to destinations larger coaches can't reach. Backed by Newmar's proven engineering and advanced safety features, the New Aire delivers confident, elegant travel with the ideal balance of practicality and sophistication.

NEW FEATURES FOR 2027

- + Interior Lifecycle Update
- + Three-Door Samsung® Stainless Steel Residential Refrigerator with Icemaker and Water Dispenser
- + Upgraded House Theater Sound Quality on Bose® Ultra Soundbar
- + Theater Seating Featuring Adjustable Headrests (Optional)
- + Starlink Internet System Now Standard (Subscription Required)
- + Pet Package: Includes Newmar-Branded Splash-Proof Water and Food Bowls, Exterior Leash Hook and Retractable Pet Gate (Optional)



FLOOR PLANS

3

+ Length 35'

EXTERIORS

4

+ Onyx Package Available

INTERIOR DÉCORS

4

CUSTOMIZATIONS

- + **Customization Options Include:** paint colors, fabrics, flooring, window sizes, vent options, doors and cabinet fronts
- + **Kitchen and Bath Customizations:** backsplashes, sinks, plumbing fixtures, and cabinet hardware
- + **Electrical Customizations:** interior and exterior outlet placement and custom wiring runs based on preference

WHY NEWMAR

Every Newmar coach is crafted with purpose, tailored to you, and backed by unwavering support. This relentless pursuit of excellence shapes everything we do. From the precision of our engineering to the responsiveness of our service. From the innovation in our designs to the personalization that honors our customer’s vision.

PRODUCT FEATURES

STAR Foundation

Your foundation for confidence begins with stability. The exclusive STAR Foundation delivers both strength and serenity through its precisely engineered steel superstructure. Carefully welded to every luxury chassis, you'll experience a ride that's both quiet and more stable.

Residential Build

At Newmar, we craft every coach with the same proven techniques used in quality residential construction. Strong, layered sidewalls pair with precisely placed C-channel aluminum studs set 16 inches on-center, while a robust truss-built roof protects your investment for the long haul. Inside, premium flooring adds stability and comfort, and durable aluminum-framed windows are built to stand the test of time, coming together to deliver a coach made to last.

Comfort Drive™

The freedom of the open road deserves control that matches your confidence. Standard on every diesel pusher and luxury model, Comfort Drive™ with Passive Steer technology puts car-like handling at your fingertips—because your journey should be defined by discovery, not compromise.

Masterpiece Finish™

Every Newmar coach is finished with our Full-Paint Masterpiece Finish™, an industry-exclusive process crafted with premium BASF paints and applied entirely within our own 45,000-square-foot paint facility by skilled Newmar artisans. We were the first RV manufacturer to offer full-body paint across every model we build—a testament to our unwavering commitment to quality and our belief that your motorhome should be as beautiful on the outside as it is welcoming on the inside.



NEWMAR SERVICE

At Newmar, we deliver a seamless service experience designed to get you back out on the road as soon as possible. It's all about providing you with an uncompromising service experience from the day you take delivery of your new home on wheels.

SERVICE FEATURES

Personal Service Tech

The Newmar Service Center offers personal service technicians and the ability to camp onsite with full hookups, receive in-depth education, use private workstations, visit with other Newmar owners in our lounge, and enjoy convenient laundry facilities along with dedicated pet lounges and a pet park.

NewServ Mobile

With NewServ, our technicians come to you for routine maintenance. Services like appliance fixes, water pump maintenance, and more are available in Southern California, Arizona, and Central Florida. To schedule your appointment, call **800-731-8300**.

Newgle for Product Knowledge

Explore Newgle—our free online knowledge base—packed with information straight from Newmar, as well as our component manufacturers and suppliers.

Dedicated Brand Specialists

Newmar Service Account Managers, otherwise known as Brand Specialists, provide dealer warranty service authorizations within four business hours, and ship all in-stock parts the same day, via free ground shipment. And if a part is out of stock, they'll either pull it from the production floor or order the part from the appropriate supplier immediately.



HARDWOOD CABINETRY OPTIONS

SABLE (SHOWN IN IMAGE)



FEATURES

- + Maple Hardwood Cabinet Doors in Suede or High Gloss Finish
- + Available in Five Solid Colors and Four Two-Tone Finishes
- + Concealed Cabinet Door Hinges
- + Soft-Close Cabinet Drawers
- + Dovetail Cabinetry Drawers with Self-Closing Full Extension Ball Bearing Guides

CABINET COLOR OPTIONS

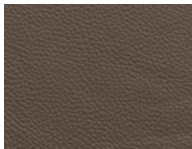


TWO-TONE OPTIONS

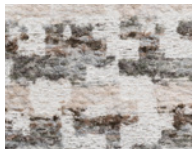


INTERIOR DECOR OPTIONS

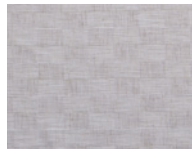
HUDSON (SHOWN IN IMAGES)



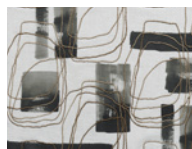
Leather Furniture & Ceiling Accent



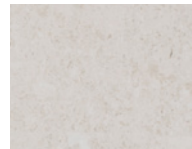
Sofa Pillows



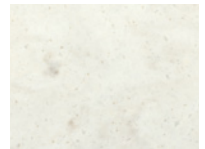
Bedsread



Bed Pillows



Tile Flooring



Countertops

EVERETT



Leather Furniture & Ceiling Accent



Sofa Pillows



Bedsread



Bed Pillows

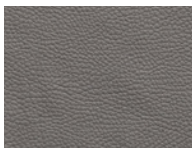


Tile Flooring

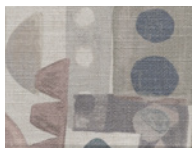


Countertops

DAWSON



Leather Furniture & Ceiling Accent



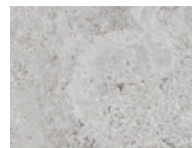
Sofa Pillows



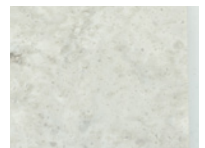
Bedsread



Bed Pillows

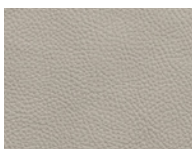


Tile Flooring

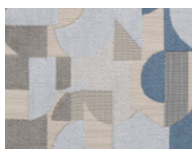


Countertops

CARRINGTON



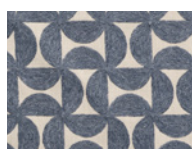
Leather Furniture & Ceiling Accent



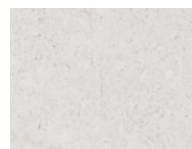
Sofa Pillows



Bedsread



Bed Pillows



Tile Flooring



Countertops

Exterior color and interior décor options may be matched to customer preference, subject to availability. Please see your dealer for details.

EXTERIOR DESIGN OPTIONS



AQUASTONE

Charcoal Tweed Awning

RAVENWOOD

Charcoal Tweed Awning

STONEVEIL

Charcoal Tweed Awning

WINTERWOOD

Charcoal Tweed Awning



FEATURES

- + Industry-Exclusive Full-Paint Masterpiece Finish™ with Clearcoat
- + New Exterior Graphics and Colors with Four Color Combinations*

- + Ability to Customize Color Selections
- + Front Cap Diamond Shield Protection
- + Onyx Package Available (Optional)

*New for 2027

Exterior color and interior décor options may be matched to customer preference, subject to availability. Please see your dealer for details.

ONYX EXTERIOR PACKAGE

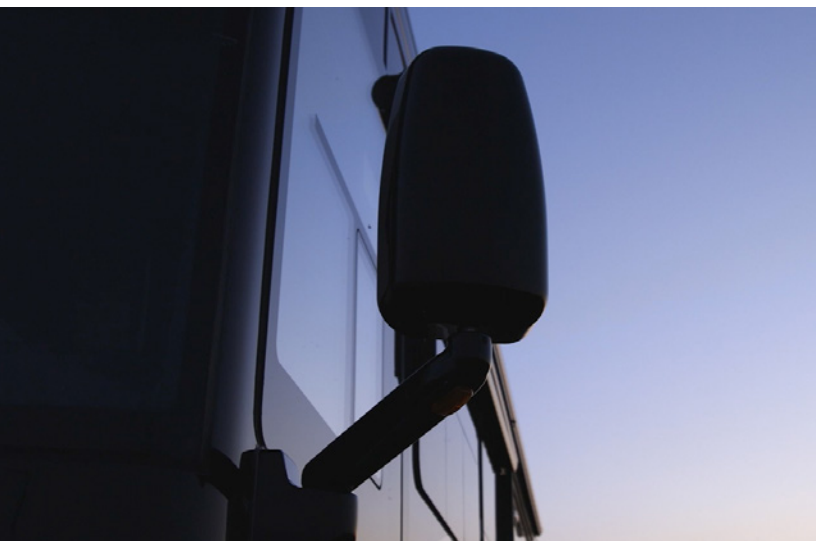
KEY FEATURES

- + The Onyx Exterior Package replaces standard chrome accents with a sleek, blacked-out finish.
- + Exclusively available on the following coaches: King Aire, Essex, London Aire, Mountain Aire, New Aire, Dutch Star, Summit Aire, Supreme Aire, Super Star, Grand Star and Freedom Aire.
- + Not available on Bay Star, Bay Star Sport, Ventana, Northern Star and Canyon Star.
- + The Onyx Exterior Package is exclusively pre-order only and is not available aftermarket. To request a bold black-out style, see your Newmar dealer prior to purchase.

The Onyx Package includes the following features:

- + Front Cap Accents
- + Rear Cap Accents
- + Entrance Grab Handle
- + Rock Guard
- + Wheels and Center Caps
- + Mirrors
- + Front and Back Logos
- + Baggage Door Trim*

DUTCH STAR FEATURED IN IMAGES



*Baggage door trim is Standard on the King Aire, but optional for other eligible coaches.

COCKPIT

KEY FEATURES

- + Italian Leather Driver & Passenger Seats with Six-Way Power & Power-Lumbar, Plus Recliner and Footrest on Passenger Seat
- + Industry-First Comfort Drive™ Adaptive Steering with Power Column and Adjustable Control
- + Mobileye® Lane Tracking and Lane Departure Warning System
- + Electronic Stability Control
- + OnGuard™ Collision Mitigation Adaptive Cruise System with Adjustable Following Distance Control
- + Xite Dash Radio with Apple CarPlay®, 10" Dual Monitors with Nav-N-Go Navigation System
- + Auto Rain Sense Wipers
- + Push Button Start



POPULAR UPGRADES

- + Blind Spot Detection
- + Queen-Size Passenger Seat
- + Extra Monitor on Passenger Side

CABIN

KEY FEATURES

- + Multiple Seating Options Available
- + Italian Leather Furniture Throughout
- + 50" Samsung® TV
- + Two 15K BTU Air Conditions with Heat Pump
- + ATC Control Panel Connects via Bluetooth® to the Newmar App
- + Starlink Internet System (Subscription Required)
- + Pet Package: Includes Newmar-Branded Splash-Proof Water and Food Bowls, Exterior Leash Hook and Retractable Pet Gate (Optional)*

*New for 2027



GALLEY & DINETTE

KEY FEATURES

- + Euro Booth Dinette
- + Three-Door Samsung® Stainless Steel Residential Refrigerator with Icemaker and Water Dispenser*
- + 30" Samsung® Stainless Steel Convection Microwave
- + All-Electric Portable Induction Cooktop
- + Dishwasher with Wood Front (Optional)
- + Large Pantry with Pullout Shelves
- + Fireplace in Dry Bar (Floor Plan 3543; Optional)

*New for 2027



POPULAR UPGRADES

- + Fireplace in Dry Bar
- + Dishwasher with Wood Panel Front
- + Beverage Center in Pantry (Holds Up to 6 Bottles)

BEDROOM

KEY FEATURES

- + Floor Plans with Both Queen and King-Size Beds Featuring Plush Pillow Top Mattresses
- + Lighted Wardrobe with Safe
- + 43" Samsung® 4K TV In Bedroom
- + Lifts on Bed
- + Designer Feature Ceiling With Cathedral Ceiling



BATHROOM

KEY FEATURES

- + Bath and a Half Model with Luxurious Full-Bath in Rear and Half-Bath Midship
- + Primary Bath Features Trough Sink and Fully Tiled Shower Walls and Floor
- + Cathedral Ceiling in Shower for Added Height
- + Aqua Miser® Shower System
- + Stacked Two-Piece Splendide® Washer and Dryer (Optional)
- + Linen Cabinet



POPULAR UPGRADE
+ Stacked Two-Piece Splendide® Washer and Dryer

EXTERIOR FEATURES

KEY FEATURES

- + Industry-Exclusive Full-Paint Masterpiece Finish™ with Clearcoat Cut and Buff
- + Two Girard® Nova Side Awnings, Slideout Covers, and Power Entrance Door Awning
- + Exterior RGB LED Lights Below Perimeter of Unit (Optional)*
- + Exterior Entertainment Center in Sidewall with 43" Samsung® 4K LED TV & Bose® Soundbar
- + Hydraulic Leveling Jacks with Touchpad
- + Self-Close Baggage Doors

*New for 2027

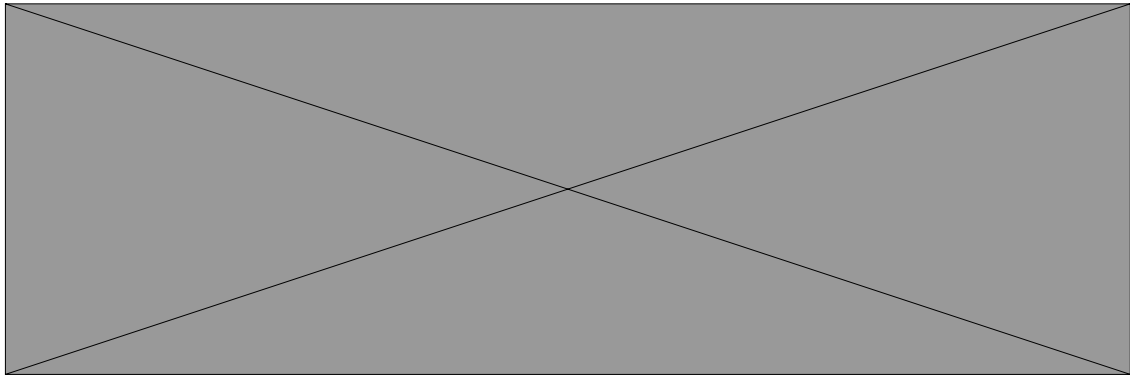


POPULAR UPGRADE

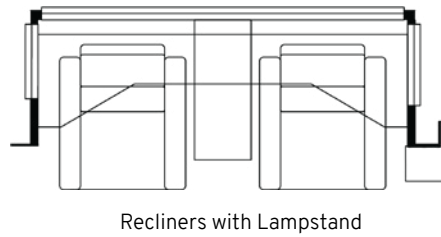
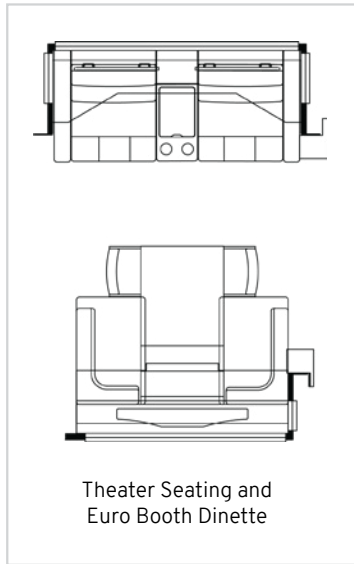
- + Four Flexible 120W Solar Panels On Roof (Optional)

3543 FLOOR PLAN

STANDARD



OPTIONS



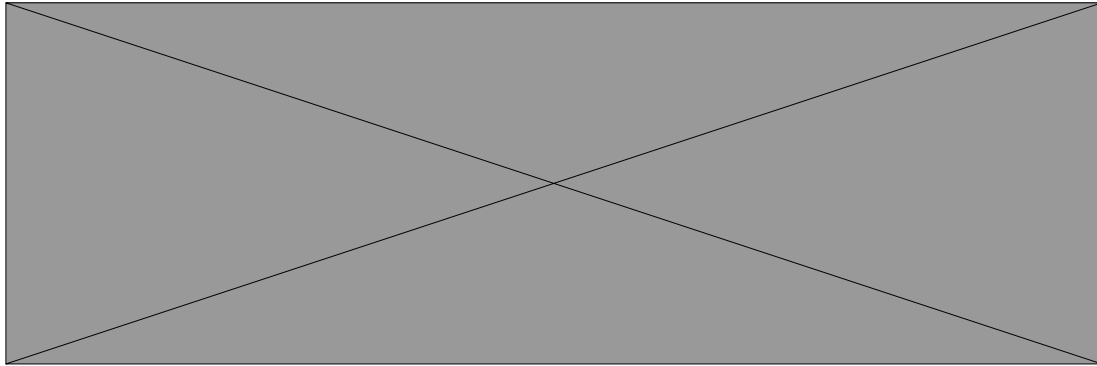
PERFECT FOR

- + Discerning Couples
- + Those Seeking Both Elevated Luxury and Maneuverability
- + National Park Enthusiasts or Those Visiting Space-Constrained Locations
- + Hosts and Entertainers Seeking Patio-Side Views

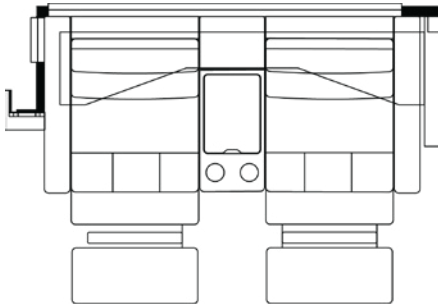
Length	35' 10"	Interior Height	81.5"	Furnace	50,000 BTU
Width	101.5"	Grey Tank	60 gal.	Sleeps	2-4 People
App. Overall Height	12' 03"	Sewage Tank	40 gal.		
Interior Width	95.5"	Water Tank	105 gal.		

3545 FLOOR PLAN

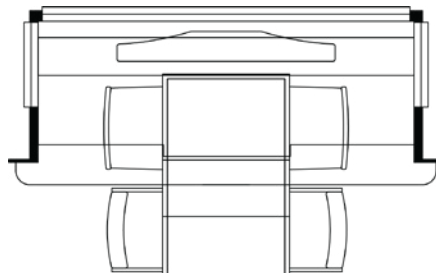
STANDARD



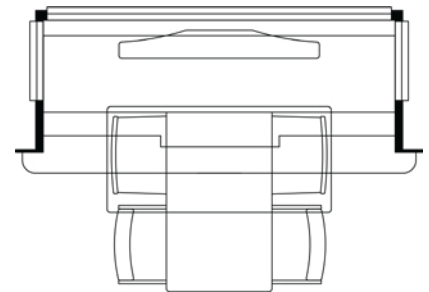
OPTIONS



Theater Seating



Freestanding Dinette with TV Lift Cabinet



Convertible Dinette

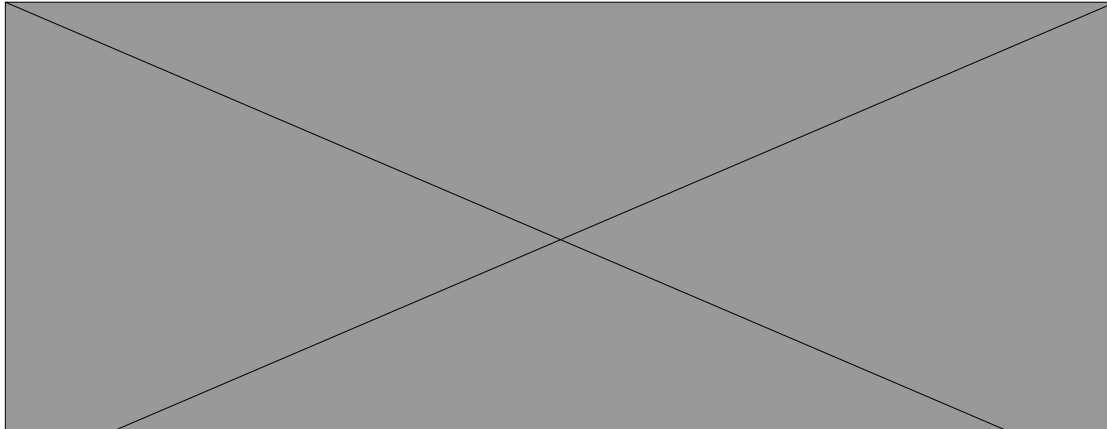
PERFECT FOR

- + Discerning Couples
- + Those Seeking Both Elevated Luxury and Maneuverability
- + National Park Enthusiasts or Those Visiting Space-Constrained Locations
- + Hosts and Entertainers Desiring Midship Bath

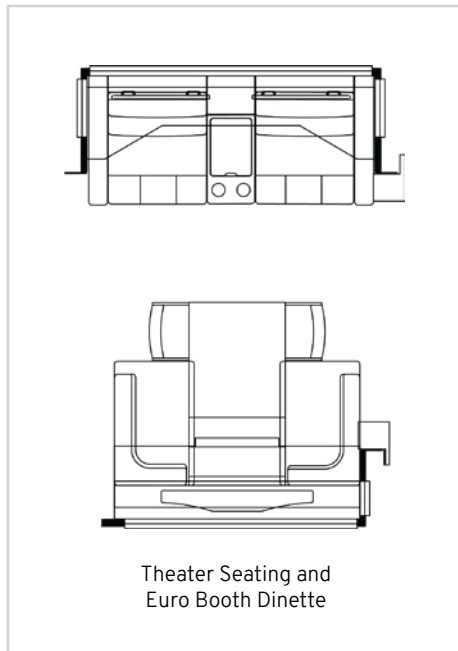
Length	35' 10"	Interior Height	81.5"	Furnace	50,000 BTU
Width	101.5"	Grey Tank	60 gal.	Sleeps	2-4 People
App. Overall Height	12' 03"	Sewage Tank	40 gal.		
Interior Width	95.5"	Water Tank	105 gal.		

3547 FLOOR PLAN

STANDARD



OPTIONS



PERFECT FOR

- + Discerning Couples
- + Those Seeking Both Elevated Luxury and Maneuverability
- + National Park Enthusiasts or Those Visiting Space-Constrained Locations
- + Culinary Enthusiasts Seeking a Spacious Kitchen

Length	35' 10"	Interior Height	81.5"	Furnace	50,000 BTU
Width	101.5"	Grey Tank	60 gal.	Sleeps	2-4 People
App. Overall Height	12' 03"	Sewage Tank	40 gal.		
Interior Width	95.5"	Water Tank	105 gal.		

FLOOR PLAN SPECIFICATIONS

FLOOR PLAN KEY FEATURES

+ 3543:

- **Perfect For:** Discerning Couples, Those Seeking Both Elevated Luxury and Maneuverability, National Park Enthusiasts or Those Visiting Space-Constrained Locations, Hosts and Entertainers Seeking Patio-Side Views
- **Key Features:** Maximum Maneuverability, Generous Living Space, Full Bath, King-Size Bed

+ 3545:

- **Perfect For:** Discerning Couples, Those Seeking Both Elevated Luxury and Maneuverability, National Park Enthusiasts or Those Visiting Space-Constrained Locations, Hosts and Entertainers Seeking a Midship Bath
- **Key Features:** Spacious Kitchen, Midship Half Bath, Luxurious Bedroom Suite with King-Size Bed

+ 3547:

- **Perfect For:** Discerning Couples, Those Seeking Both Elevated Luxury and Maneuverability, National Park Enthusiasts or Those Visiting Space-Constrained Locations, Culinary Enthusiasts Seeking a Spacious Kitchen
- **Key Features:** Spacious Kitchen, Midship Half Bath, Luxurious Bedroom Suite with King-Size Bed

FLOOR PLAN SPECIFICATIONS										
FLOOR PLAN	LENGTH	WIDTH	APP. OVERALL HEIGHT	INTERIOR WIDTH	INTERIOR HEIGHT	GREY TANK	SEWAGE TANK	WATER TANK	FURNACE	SLEEPS
3543	35' 10"	101.5"	12' 03"	95.5"	81.5"	60 gal.	40 gal.	105 gal.	50,000 BTU	2-4
3545	35' 10"	101.5"	12' 03"	95.5"	81.5"	60 gal.	40 gal.	105 gal.	50,000 BTU	2-4
3547	35' 10"	101.5"	12' 03"	95.5"	81.5"	60 gal.	40 gal.	105 gal.	50,000 BTU	2-4

The content in our literature depicts and describes products that are subject to change. For the most recent images and information, please visit NewmarCorp.com. Lengths, heights, widths, and dry weights are approximate. Weight will vary based on optional equipment added to the above base weight.

CHASSIS



CHASSIS

- + Freightliner® Custom Chassis
- + Spartan® K2 Chassis

HORSE POWER

450 HP

Cummins L9 Diesel Engine

FUEL TANK	LENGTH	TORQUE	AXLES
90 <small>GAL</small>	35 <small>FT</small>	1,250 <small>LB/FT</small>	2

TIRE SIZE	STEERING WHEEL	SAFETY	TRANSMISSION
22.5" Michelin Brand 295/0R22.5	Comfort Drive™ Adaptive Steering with Power Column and Adjustable Control	+ OnGuard™ Collision Mitigation, Adaptive Cruise System with Adjustable Following Distance Control + Electronic Stability Control + Mobileye® Lane Tracking And Lane Departure Warning System + Back-Up Alarm + Cruise Control + Blind Spot Detection (Optional)	Allison 3000MH Transmission

CHASSIS SPECIFICATIONS

GLOSSARY

- + **GAWR:** Gross Axle Weight Rating is the maximum permissible weight for an axle.
- + **GVWR:** Gross Vehicle Weight Rating is the maximum permissible weight for a fully loaded motor coach.
- + **GCWR:** Gross Combination Weight Rating is the value specified by the manufacturer of the vehicle as the maximum allowable loaded weight of this motor coach and any towed trailer or towed vehicle.
- + **UVW:** Unloaded Vehicle Weight is the weight of this motor coach as built at the factory with full fuel, engine oil, and coolants. Does not include cargo, fresh water, propane gas, or dealer-installed accessories.
- + **NCC:** Net Carrying Capacity is the maximum weight of all occupants, including the driver, personal belongings, food, fresh water, waste water, propane gas, tools, tongue weight of towed vehicle, dealer-installed accessories, etc., that can be carried by the motor coach.
- + Specifications supplied by the chassis manufacturer.

SPARTAN® CHASSIS												
FLOOR PLAN	ENGINE HP	AXLE RATIO	FUEL CAP.	WHEEL BASE	TIRE SIZE	FRONT GAWR	REAR GAWR	TAG GAWR	GVWR	GCWR	APP. UVW	APP. NCC
3543	450	4.3	90	226	22.5"	14600 lb.	24000 lb.	0	38600 lb.	48600 lb.	33800 lb.	4800 lb.
3545	450	4.3	90	226	22.5"	14600 lb.	24000 lb.	0	38600 lb.	48600 lb.	33800 lb.	4800 lb.
3547	450	4.3	90	226	22.5"	14600 lb.	24000 lb.	0	38600 lb.	48600 lb.	33400 lb.	5200 lb.

FREIGHTLINER® CUSTOM CHASSIS												
FLOOR PLAN	ENGINE HP	AXLE RATIO	FUEL CAP.	WHEEL BASE	TIRE SIZE	FRONT GAWR	REAR GAWR	TAG GAWR	GVWR	GCWR	APP. UVW	APP. NCC
3543	450	4.3	90	226	22.5"	14600 lb.	24000 lb.	0	38600 lb.	48600 lb.	33800 lb.	4800 lb.
3545	450	4.3	90	226	22.5"	14600 lb.	24000 lb.	0	38600 lb.	48600 lb.	33400 lb.	5200 lb.
3547	450	4.3	90	226	22.5"	14600 lb.	24000 lb.	0	38600 lb.	48600 lb.	33400 lb.	5200 lb.

The content in our literature depicts and describes products that are subject to change. For the most recent images and information, please visit NewmarCorp.com. Lengths, heights, widths, and dry weights are approximate. Weight will vary based on optional equipment added to the above base weight.

STANDARD FEATURES & OPTIONS

EXTERIOR FEATURES

- Exterior Full-Paint Masterpiece Finish™ with Clearcoat and Cut and Buff
- Power Chrome Baggage Door Locks, Keyless Entrance Door With Touchpad and Doorbell
- Self-Close Baggage Doors
- Entrance Door Assist Handle
- Automatic Entrance Door Step
- Convex Chrome Exterior Mirrors With Defrost, Remote Control and Turn Signal Indicators
- Exterior Storage Compartments Finished With Cargo Liner
- Front Cap Diamond Shield Protection
- Holding Tank Levels Displayed in Exterior Water Works Compartment
- Hydraulic Leveling Jacks
- Mud Flaps
- Lighted Newmar Badge In Front Grill
- Rear Hitch for Towing Car
- Stainless Steel Exterior Trim Pieces and Entrance Door Kick Panel
- Tow Guard Rear Protective With Stainless Newmar Name Cutout
- Undercoating

OPTIONS

- Black Aluminum Powder Coat Trim Kit For Exterior Compartment Doors, Onyx Package
- Flag Pole Bracket
- Stainless Steel Trim Kit For Exterior Compartment Doors and Step
- Power Storage Tray (Multiple Bays Available)
- Non-Power Storage Tray (Multiple Bays Available)
- Windshield Temporary Protection - For Transport Only

CONSTRUCTION FEATURES

- 16" On-Center Aluminum Frame Sidewalls & Roof Construction
- Egress Door with Ladder System
- Fiberglass Roof and Integrated Gutter Rail
- Foam Insulation 5/8" Laminated in Sidewalls and Ceiling
- Gelcoated Fiberglass Exterior Sidewalls, Front and Rear Caps
- Polar Pak R19 Batten Insulation In Roof
- Slideout Automatic Lock Arms On Non Hydraulic
- Slideout Automatic Lock Arms on Non Hydraulic - Paddle Style
- Slideout Hydraulic Flat Floor System - Driver Side (Floor Plan Specific)

WINDOWS, AWNINGS, & VENTS

- Carefree Slideout Covers & Power Entrance Door Awning With LED Lights
- Fan-Tastic® Vent With Hardwood Louver Cover In Kitchen
- Fan-Tastic® Vent With Rain Sensor In Kitchen & Bathroom
- Girard® G2000 Power Side Awning With Wind Sensor, Remote Control and LED Lights
- Kitchen Window

- Window Above Bed
- Power Window on Driver Side
- Frameless Double-Pane Tinted Safety Glass Windows
- Large Non-Ventilated Living Room And Dinette Windows
- One-Piece Tinted Windshield

CHASSIS FEATURES

- Air Leveling Control System
- Anti-Lock Braking System
- Auto Rain Sense Wipers
- Back-Up Alarm
- Battery Disconnect for Chassis Battery
- Cockpit Seat Belts Latch Sensors
- Cockpit Seat Occupancy Sensors
- Comfort Drive™ Adaptive Steering with Power Column and Adjustable Control
- Cruise Control
- Optiview Dash Panel - Freightliner® Custom Chassis
- Electronic Chassis Information Center in Dash
- Electronic Stability Control
- IFS Front Suspension
- Keyless Ignition
- Mobileye® Lane Tracking And Lane Departure Warning System
- Cummins Acumen Module On Freightliner® Custom Chassis
- OnGuard™ Collision Mitigation Adaptive Cruise System with Adjustable Following Distance Control
- Recessed Fuel Fills, With Cross Over To Fill From Either Side
- Seat Belt Warning Indicator in Dash Display
- Freightliner® Custom Chassis, 450 HP, 35' New Aire
- Manual Tilt/Telescope Steering Wheel with VIP Smart Wheel
- Nine Function Switch Pod In Center Steering Wheel On Spartan® Chassis or Drive Tech Steering Wheel with Integrated Transmission Controls on Freightliner® Custom Chassis
- Tire Pressures Displayed On Glass Dash
- Valid Digital Glare Free Dash On Spartan® Chassis
- Valor Generation 3 TPMS System
- V-Ride Drive Axle Suspension - Freightliner® Custom Chassis
- Aluminum Wheels

OPTIONS

- Blind Spot Detection
- Freightliner Custom Chassis®, 450 HP, 35' New Aire California Compliance
- Freightliner Custom Chassis®, 450 HP, 35' New Aire, Onyx Package,
- Freightliner Custom Chassis®, 450 HP, 35' New Aire, Onyx Package, California Compliance
- Spartan®, 450 HP, 35' New Aire
- Spartan®, 450 HP, 35' New Aire, Onyx Package

STANDARD FEATURES & OPTIONS (CONTINUED)

AIR CONDITIONING & HEATING

- Two 15K BTU Air Heat Pump Conditioners
- Air Conditioning Drainage System For Roof
- Chinook Dual Loop Heat with Continuous Hot Water
- Dash Heater and Air Conditioner
- Driver & Passenger Dash Overhead Ventilation System
- Electric Radiant Heat Installed Below Floor Tile
- Dual-Zone HVAC In Cockpit Area
- Wall Mounted Sensors for Heating and Air Conditioning

ELECTRICAL FEATURES

- Automatic Generator Start on Low Battery or Temperature Setting
- Battery Disconnect Switch for House Battery
- Cable TV Connection
- Dash Radio, Cameras and Monitors to Power Up from Both House Batteries and Ignition
- Daytime Running Lights
- Recessed Docking Lights
- 50 Amp Electrical Service with Flexible Cord and Automatic Transfer Switch
- Emergency Engine Start Switch
- Energy Management System
- Engine Block Heater
- Exterior Security Lights, One Installed on Each Side
- Fog Lights
- Interior Courtesy Lights
- LED Lights In Ceiling
- LED Lights In Pullout Pantry, Kitchen and Bathroom Base Cabinets
- LED Lights Installed Under Door Side Slideouts
- LED Lights Installed Under Door-Side Slideouts
- Lighted Vanity Mirrors
- Lights In Wardrobes
- 640 AHR Lithionics Lithium Ion Battery System with Two 3000W Pure Sine Inverters (UL Approved)
- Midship Side Turn Signals
- Multiplex Electrical Wiring System
- Multiplex Lighting Control System
- 10.1" Multiplex Monitor System in Center of Coach with Interior Lighting and HVAC Controls
- Multiplex Monitor System With One Monitor
- Newmar App
- 8 kW Cummins Onan® Diesel Generator
- Power Rewind Reel With 33' Cord (Floor Plan Specific)
- Dimmable Reading Lights At Head Of Bed with Adjustable Aim
- 110V Recept in Bed Overhead with Two Pass Through Ports
- 12V Recept Auxiliary on Dashboard
- Slideout Switch Manually Operated Hold To Run

- 10W Solar Panel to Charge Chassis Battery
- Solar Prep With 6 Gauge Wire Ran From Roof To House Battery Compartment (N/A with L020 Option)
- Spare Fuses in Chassis Fuse Panel
- Spare Fuses in House Fuse Panel
- Transfer Switch with Surge Protector
- USB Outlet at Dash for Driver Use
- USB Outlet at Dinette and Bedroom Night Stand
- USB Outlet At Passenger Seat Area
- Wireless Charging Mat Built into Dash For Driver Use
- Wireless Charging Mat Built into Passenger Console
- Wireless Phone Charger Pad in Driver Area

OPTIONS

- Exterior RGB LED Lights Below Perimeter of Unit
- Four 120W Solar Panels Flexible on Roof
- Third 320 AHR Lithium Ion Battery

PLUMBING & BATH FEATURES

- Aqua Miser® Shower System
- Auto Fill for Fresh Water Tank
- Demand Water System
- Exterior Shower Located on Off-Door Side
- Hot Water Line to Generator Area
- Power Reel for Water Hose
- Sewage Holding Tank Rinse
- Fold-Down Shower Seat (Floor Plan Specific)
- Shower Soap Dispenser
- Tiled Shower Walls with Glass Door
- Dometic® 321 China Bowl Or Macerator China Bowl Stool (Varies Per Floor Plan)
- Water Filter for Entire Unit

OPTIONS

- Assist Handle in Shower
- RV Sanicon Turbo System

INTERIOR FEATURES

- Auto Motion Power Shade at Windshield and Power Shades at Driver and Passenger Side Windows
- Auto Motion Power Window Shades and Lambrequins
- Fitted Non-Quilted Bedspread and Accent Pillows
- Color-Coordinated Vinyl-Wrapped Dash Panel
- Designer Feature Ceiling With Cathedral Ceiling In Bedroom (Floor Plan Specific)
- Interior Passage Hardwood Raised Panel Doors
- Interior Assist Handle At Main Entry Door
- Power Stepwell Cover
- Safe Located in Wardrobe

STANDARD FEATURES & OPTIONS (CONTINUED)

Maximized Recessed Shoe Storage Shelves In Rear Of Wardrobe (Floor Plans 3543 & 3545)
Tile Floor in Kitchen, Bathroom, Bedroom & Living Areas
Waste Basket in Kitchen Base Under Sink
OPTIONS
<input type="checkbox"/> Pet Package: Newmar-Branded Splash-Proof Water and Food Bowls, Retractable Pet Gate and Exterior Leash Hook

CABINETS & FURNITURE

Concealed Cabinet Door Hinges
Extended Rotation Concealed Cabinet Door Hinges For Washer and Dryer
Soft-Close Cabinet Drawers
Cabinet Drawers With Dovetail Sides With Self Closing Full Extension Ball Bearing Guides
Super Polished Solid-Surface Countertop In Bathroom And Bedroom
Super Polished Solid-Surface Countertop In Kitchen, Undermounted Stainless Steel Sink & Sink Covers
Euro Booth Dinette With Two Table Leaves And Two Folding Chairs
Heated Driver & Passenger Seats
Driver & Passenger Seats With Six-Way Power, Power-Lumbar, Recliner & Footrest & Standard Width Passenger Seat
Driver Seat With Vibrator For Mobileye® System
Lifts On Bed Top
Plush Pillow Top Mattress
Molded Silverware Divider Tray
Pullout Pantry Shelves (See Floor Plans for Availability)
Visionary Trifold Sofa
Leather Sofas and Front Seats

OPTIONS
<input type="checkbox"/> Convertible Dinette with Two Fixed and Two Folding Chairs That Face To Window
<input type="checkbox"/> Free Standing Hidden Leaf Table Dinette With Two Fixed and Two Folding Chairs
<input type="checkbox"/> Air Mattress
<input type="checkbox"/> Queen Size Passenger Seat
<input type="checkbox"/> Two Recliners with Reading Lights And Lampstand Replaces Trifold Sofa
<input type="checkbox"/> 74" Powered Theatre Seating with Adjustable Headrests Replaces 38" Hide-A-Bed On Off-Door Side and 38" Euro Dinette Replaces 40" Euro Dinette On Door Side
<input type="checkbox"/> 87" Powered Theatre Seating with Adjustable Headrests Replaces Standard Sofa On Off Door Side, 38" Euro Dinette Replaces 40" Euro Dinette On Door Side
<input type="checkbox"/> 84" Powered Theatre Seating with Adjustable Headrests Replaces with Reading Lights Replaces Standard Sofa

APPLIANCES & ACCESSORIES

Air Horns
All-Electric Portable Induction Cooktop
30" Samsung® Stainless Steel Convection Microwave

Three-Door Stainless Steel Residential Refrigerator with Icemaker and Water Dispenser
Washer and Dryer Prep
OPTIONS
<input type="checkbox"/> Beverage Center in Pantry (Holds Up to 6 Bottles)
<input type="checkbox"/> Central Vacuum with Tool Kit
<input type="checkbox"/> Dishwasher with Wood Panel Front
<input type="checkbox"/> Fireplace in Dry Bar
<input type="checkbox"/> 1.35 Cu. Ft. Dometic® Freezer On Pullout Tray in Exterior Compartment
<input type="checkbox"/> Stacked Two-Piece Splendide® Washer and Dryer

AUDIO, VIDEO & ACCESSORIES

Side View Cameras Displayed Onto Rear View Monitor Screen
Cat6 TV Cables
Doorbell Camera System at Entrance Door Connected to Remote App
Exterior Entertainment Center in Sidewall with 43" Samsung® 4K LED TV & Bose® Soundbar
Fire Extinguisher 10 Bc, Carbon Monoxide, Smoke Detectors
Internet Connectivity for Remote Access to Motorhome
Radio SiriusXM® Capability with Antenna (Subscription Required)
Rear-View Color Monitor System with Audio
Starlink Internet System (Subscription Required)
Satellite Dish Prep on Roof
Bose® Sound System Soundbar
TV Jack and 110V Recept in Door-Side Exterior Storage Compartment
43" Samsung® 4K TV In Bedroom
50" Samsung® TV in Living Area
WiFiRanger Denali/Spruce LTE
Starlink Internet System (Subscription Required)
WiFiRanger Denali/Spruce LTE
Xite Dash Radio with Apple CarPlay®, 10" Dual Monitors with Nav-N-Go Navigation System

Xite HD 360 Camera System with Grid Lines and Tri-View Rear Camera
OPTIONS
<input type="checkbox"/> Extra Monitor on Passenger Side
<input type="checkbox"/> Starlink High-Performance Internet System
<input type="checkbox"/> Universal Remote Control
<input type="checkbox"/> Universal Toll Module
<input type="checkbox"/> Everest WiFi System with Aspen Interior Router
<input type="checkbox"/> WiFiRanger Everest with Aspen Interior Router
<input type="checkbox"/> Winegard® Rayzar Automatic Digital TV Antenna
<input type="checkbox"/> Winegard® In Motion Dome Satellite Dish - For DISH® Standard/HD, DIRECTV® Standard & Bell Canada (Rtt-20B)
<input type="checkbox"/> Winegard® Automatic Open Face SWM Satellite Dish-For DIRECTV Std/HD SK2-300 with Auto Stow & Dash Indicator
<input type="checkbox"/> Winegard® In Motion Dome Satellite Dish - For DISH Std/HD, DIRECTV Std & Bell Canada
<input type="checkbox"/> Winegard® Rayzar Automatic Digital TV Antenna

OUR PARTNERS

THE NEWMAR DIFFERENCE™

The Newmar Difference™ begins with suppliers dedicated to providing our customers with unrivaled quality, comfort, and support. We only work with suppliers that are dedicated to providing our customers with unrivaled innovation, comfort, and reliability. It's all so you can experience best-in-class performance from names you can trust. At Newmar, that's our difference, and our promise.



BASF

The Coatings division of BASF is a global expert in the development and production of innovative and sustainable OEM and refinish coatings. Coatings by BASF—solutions beyond your imagination.



Freightliner® Custom Chassis

Freightliner® Custom Chassis are renowned for their exceptional ride, excellent maneuverability, advanced technology, and nationwide 24/7 factory-direct support.



Spartan® RV Chassis

An American company with over 40 years of experience in designing and manufacturing the premier motorhome chassis, Spartan® delivers superior performance, exceptional safety ratings, and industry-leading technology.



Industrial Finishes

Industrial Finishes has supported RV manufacturers for over four decades, offering paint products that deliver uncompromising quality and provide your coach with a true Masterpiece™ finish.



RiverPark

From Samsung® 4K TVs and Xite Infotainment systems to Bose® soundbars and JBL and Infinity premium audio systems, RiverPark helps ensure you enjoy the ultimate audio-visual technology in your Newmar coach.

THE NEWMAR CUSTOMER EXPERIENCE

The Newmar Difference™ goes beyond our industry-leading motor coaches to provide you with an unrivaled ownership experience.



Crafted with Purpose

Every Newmar is crafted one at a time by folks who have spent an average of eight years building them. Each coach we assemble must undergo more than 1,000 tests and checks before ever leaving our factory.



More Than a Number

Meet fellow owners through the Newmar Kountry Klub, a top social club for RV travelers that hosts rallies and other special events throughout the U.S. and Canada.



The Highest Standards

We view our dealership network in terms of quality, not quantity. Each of our dealers acts as a partner in our shared mission to exceed your highest of expectations, for an ownership experience that's second to none from day one.



Seamless Service

When you join the Newmar family, we pair you with a dedicated service specialist with expert knowledge of your exact coach. Our service specialists guarantee dealer warranty authorizations within four business hours and ship all in-stock parts the same day, free of charge.



Built Around You

As a Newmar owner, you'll find resources specific to your coach through Newgle, an easy-to-use knowledge base that houses everything from user guides to technical support documents.



Without Compromise

All models include a one-year/unlimited mileage limited warranty and a five-year, non-transferable structural warranty that covers your coach's superstructure in the event it fails to perform. Ask your Newmar dealer for more details.

CONTACT

Newmar Corporation
1952 Cheyenne St.
Nappanee, IN 46550

+ Phone: 574-773-7791
+ Fax: 574-773-2895
+ NewmarCorp.com

