



2027 LONDON AIRE



SOPHISTICATED. TIMELESS. ELEGANT.

WHY LONDON AIRE

The 2027 London Aire blends timeless Newmar craftsmanship with modern luxury and powerful performance to create a refined yet familiar travel experience. Its thoughtfully designed interior features premium finishes, a welcoming kitchen, and customizable layouts that suit extended journeys and personal preferences. Advanced amenities like Starlink Internet and optional pet-friendly features enhance life on the road, while a 605-horsepower engine, robust towing capacity, and STAR Foundation deliver confident handling and ride comfort wherever you travel.

NEW FEATURES FOR 2027

- + Now Featuring Samsung® Refrigerator with Icemaker
- + Option to Convert Rear Wardrobe to Bunk Beds (Floor Plan 4545)
- + Upgraded House Theater Sound Quality on Bose® Smart Ultra Soundbar
- + Theater Seating Featuring Adjustable Headrests (Optional)
- + Starlink Internet System Now Standard (Subscription Required)
- + Pet Package: Includes Newmar-Branded Splash-Proof Water and Food Bowls, Exterior Leash Hook and Retractable Pet Gate (Optional)



FLOOR PLANS

5

+ Length 45'

EXTERIORS

4

- + Onyx Package Available
- + Artisan Series Custom Paint Process Available

INTERIOR DÉCORS

4

CUSTOMIZATIONS

- + **Customization Options Include:** paint colors, fabrics, flooring, window sizes, vent options, doors and cabinet fronts
- + **Kitchen and Bath Customizations:** backsplashes, sinks, plumbing fixtures, and cabinet hardware
- + **Electrical Customizations:** interior and exterior outlet placement and custom wiring runs based on preference

WHY NEWMAR

Every Newmar coach is crafted with purpose, tailored to you, and backed by unwavering support. This relentless pursuit of excellence shapes everything we do. From the precision of our engineering to the responsiveness of our service. From the innovation in our designs to the personalization that honors our customer's vision.

PRODUCT FEATURES

STAR Foundation

Your foundation for confidence begins with stability. The exclusive STAR Foundation delivers both strength and serenity through its precisely engineered steel superstructure. Carefully welded to every luxury chassis, you'll experience a ride that's both quiet and more stable.

Residential Build

At Newmar, we craft every coach with the same proven techniques used in quality residential construction. Strong, layered sidewalls pair with precisely placed C-channel aluminum studs set 16 inches on-center, while a robust truss-built roof protects your investment for the long haul. Inside, premium flooring adds stability and comfort, and durable aluminum-framed windows are built to stand the test of time, coming together to deliver a coach made to last.

Comfort Drive™

The freedom of the open road deserves control that matches your confidence. Standard on every diesel pusher and luxury model, Comfort Drive™ with Passive Steer technology puts car-like handling at your fingertips—because your journey should be defined by discovery, not compromise.

Masterpiece Finish™

Every Newmar coach is finished with our Full-Paint Masterpiece Finish™, an industry-exclusive process crafted with premium BASF paints and applied entirely within our own 45,000-square-foot paint facility by skilled Newmar artisans. We were the first RV manufacturer to offer full-body paint across every model we build—a testament to our unwavering commitment to quality and our belief that your motorhome should be as beautiful on the outside as it is welcoming on the inside.



NEWMAR SERVICE

At Newmar, we deliver a seamless service experience designed to get you back out on the road as soon as possible. It's all about providing you with an uncompromising service experience from the day you take delivery of your new home on wheels.

SERVICE FEATURES

Personal Service Tech

The Newmar Service Center offers personal service technicians and the ability to camp onsite with full hookups, receive in-depth education, use private workstations, visit with other Newmar owners in our lounge, and enjoy convenient laundry facilities along with dedicated pet lounges and a pet park.

NewServ Mobile

With NewServ, our technicians come to you for routine maintenance. Services like appliance fixes, water pump maintenance, and more are available in Southern California, Arizona, and Central Florida. To schedule your appointment, call **800-731-8300**.

Newgle for Product Knowledge

Explore Newgle—our free online knowledge base—packed with information straight from Newmar, as well as our component manufacturers and suppliers.

Dedicated Brand Specialists

Newmar Service Account Managers, otherwise known as Brand Specialists, provide dealer warranty service authorizations within four business hours, and ship all in-stock parts the same day, via free ground shipment. And if a part is out of stock, they'll either pull it from the production floor or order the part from the appropriate supplier immediately.



HARDWOOD CABINETRY OPTIONS

SUMMIT AND MOREL TWO-TONE (SHOWN IN IMAGE)



FEATURES

- + Maple Hardwood Cabinet Doors in Suede or High Gloss Finish
- + Available in Five Solid Colors and Four Two-Tone Finishes
- + Concealed Cabinet Door Hinges
- + Soft-Close Cabinet Drawers
- + Dovetail Cabinetry Drawers With Self-Closing Full Extension Ball Bearing Guides

CABINET COLOR OPTIONS

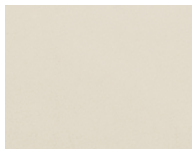


TWO-TONE OPTIONS

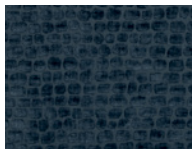


INTERIOR DECOR OPTIONS

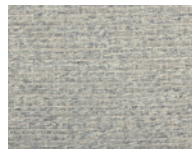
BALBOA (SHOWN IN IMAGES)



Leather Furniture & Ceiling Accent



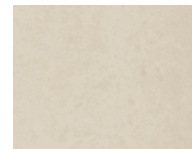
Sofa Pillows



Bedspread



Bed Pillows



Tile Flooring

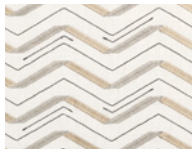


Countertops

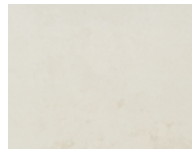
WENTWORTH



Leather Furniture & Ceiling Accent



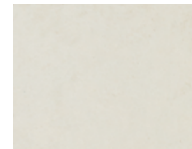
Sofa Pillows



Bedspread



Bed Pillows

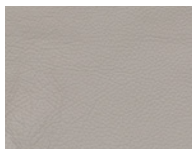


Tile Flooring



Countertops

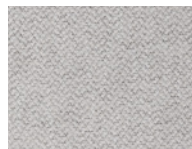
CAMINO



Leather Furniture & Ceiling Accent



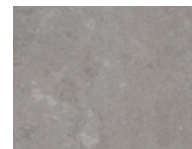
Sofa Pillows



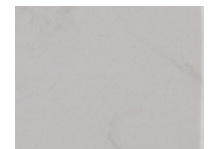
Bedspread



Bed Pillows

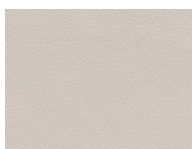


Tile Flooring

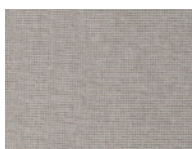


Countertops

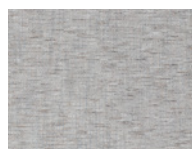
ALDEN



Leather Furniture & Ceiling Accent



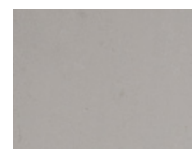
Sofa Pillows



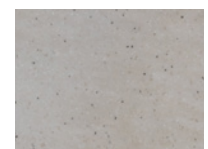
Bedspread



Bed Pillows



Tile Flooring



Countertops

Exterior color and interior décor options may be matched to customer preference, subject to availability. Please see your dealer for details.

EXTERIOR DESIGN OPTIONS



CASHMERE DUSK

Charcoal Tweed Awning

EVENING LAGOON

Charcoal Tweed Awning



MIDNIGHT ROUGE

Charcoal Tweed Awning



TWILIGHT STEEL

Charcoal Tweed Awning



FEATURES

- + Industry-Exclusive Full-Paint Masterpiece Finish™ with Clearcoat and Cut and Buff
- + New Exterior Graphics and Colors with Four Color Combinations*
- + Ability to Customize Color Selections

*New for 2027

- + Front Cap Diamond Shield Protection
- + Onyx Package Available (Optional)
- + Artisan Series Custom Paint Process Available (Optional)

Exterior color and interior décor options may be matched to customer preference, subject to availability. Please see your dealer for details.

ONYX EXTERIOR PACKAGE

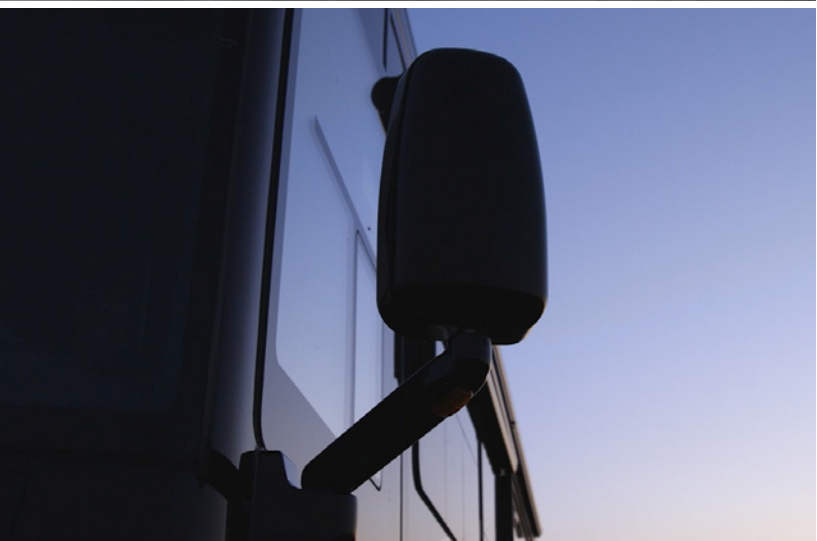
KEY FEATURES

- + The Onyx Exterior Package replaces standard chrome accents with a sleek, blacked-out finish.
- + Exclusively available on the following coaches: King Aire, Essex, London Aire, Mountain Aire, New Aire, Dutch Star, Summit Aire, Supreme Aire, Super Star, Grand Star and Freedom Aire.
- + Not available on Bay Star, Bay Star Sport, Ventana, Northern Star and Canyon Star.
- + The Onyx Exterior Package is exclusively pre-order only and is not available aftermarket. To request a bold black-out style, see your Newmar dealer prior to purchase.

The Onyx Package includes the following features:

- + Front Cap Accents
- + Rear Cap Accents
- + Entrance Grab Handle
- + Rock Guard
- + Wheels and Center Caps
- + Mirrors
- + Front and Back Logos
- + Baggage Door Trim*

DUTCH STAR FEATURED IN IMAGES



*Baggage door trim is Standard on the King Aire, but optional for other eligible coaches.

THE ARTISAN SERIES CUSTOM PAINT PROCESS

EXCLUSIVE ONE-OF-ONE

- + Make an unmistakable statement with our new Artisan Series Custom Paint Process—a revolutionary approach to luxury coach aesthetics.
- + Every design is individually crafted once created, it's never repeated. Your custom coach is an exclusive reflection of you, truly one-of-a-kind.
- + It begins with your dealer, who will navigate you through exclusive graphic treatments and help tailor a color palette that embodies your vision.
- + Artisan Series Custom Paint Process elevates our most prestigious: King Aire, Essex, London Aire, Summit Aire and the 45' Supreme Aire.

KING AIRE AND SUMMIT AIRE FEATURED IN IMAGES



COCKPIT

KEY FEATURES

- + Industry-First Comfort Drive™ Adaptive Steering
- + Comfort Drive™ Adaptive Steering with Power Column and Adjustable Control
- + Xite HD 360 Camera System with Grid Lines and Tri-View Rear Camera
- + Heated Driver and Passenger Seats with Power-Lumbar, Recline, and Footrest
- + Mobileye® Lane Tracking and Lane Departure Warning System
- + OnGuard™ Collision Mitigation Adaptive Cruise System with Adjustable Following Distance Control
- + Electronic Stability Control
- + Auto Rain Sense Wipers
- + Push Button Start



POPULAR UPGRADES

- + Extra Monitor on Passenger Side
- + Two Rear Camera Prep for Use with Stacker Trailer
- + Queen-Size Passenger Seat

CABIN

KEY FEATURES

- + Multiple Seating Configurations Available
- + Italian Leather Furniture Throughout
- + 50" Samsung® 4K LED TV on Televator
- + 43" Samsung® 4K LED TV in Front Overhead
- + Three 15K BTU Heat Pump Central Air Conditioners
- + ATC Control Panel Connects via Bluetooth® to the Newmar App
- + Starlink Internet System (Subscription Required)
- + Pet Package: Includes Newmar-Branded Splash-Proof Water and Food Bowls, Exterior Leash Hook and Retractable Pet Gate (Optional)*

*New for 2027



GALLEY & DINETTE

KEY FEATURES

- + Euro Booth Dinette (Additional Dinette Configurations Available)
- + Samsung® Refrigerator with Icemaker
- + Stainless Steel Convection Microwave
- + All-Electric Induction Flush Mount Cooktop
- + Dishwasher with Wood Panel Front (Optional)
- + Large Pantry
- + Electric Radiant Heat Below Floor Tile
- + Self-Closing Dovetail Cabinetry Drawers
- + Dual-Zone Beverage Center (Optional)
- + Narrow Beverage Refrigerator in Pantry (Optional)



BEDROOM

KEY FEATURES

- + Primary Suite with King-Size Bed with Pillow Top Mattress
- + Large Walk-In Closet (Floor Plan 4540)*
- + Option to Convert Large Walk-In Close to Bunk Beds in Rear of Coach (Floor Plan 4540)*
- + Lighted Wardrobe with Safe*
- + Samsung® LED TV
- + Option to Convert Bunks to Dedicated Workspace with Desk and Chair (Floor Plan 4540)
- + Fitted Bedspread and Accent Pillows for Primary Suite
- + Spacious 30" x 72" Bunks Mid-Ship (Floor Plan 4540)

**Safe Location Varies by Floor Plan*



POPULAR UPGRADES

- + Bunk Beds Converted to Dedicated Workspace with Desk and Chair (Floor Plan 4540)
- + Walk-In Closet Converted to Bunk Beds in Rear of Coach (Floor Plan 4545)

BATHROOM

KEY FEATURES

- + Bath and a Half Model with Luxurious Full Bath in Rear and Midship Half Bath
- + Primary Bath Features Trough Sink and Fully Tiled Shower Walls and Floor
- + Cathedral Ceiling in Bathroom for Added Height
- + Fully Tiled Shower Walls and Floor
- + Aqua Miser® Shower System
- + Stacked Two-Piece Splendide® Washer and Dryer
- + Wardrobe in Full Bath



EXTERIOR FEATURES

KEY FEATURES

- + Industry-Exclusive Full-Paint Masterpiece Finish™ with Clearcoat and Cut and Buff
- + Dual Girard® Nova Side Awnings, Slideout Covers, Entrance Door and Power Window Awnings
- + Exterior RGB LED Lights Below Perimeter of Unit (Optional)*
- + Exterior Entertainment Center with Samsung® 4K LED TV & Bose® Soundbar
- + Hydraulic Smart-Level Leveling Jacks with Bluetooth Compatible Touchpad
- + Baggage Door Close Assist
- + 3 Cu. Ft. Dometic® Freezer on Pullout Tray in Exterior Compartment
- + Pressure Washer with Soft Water System (Optional)
- + Four 120W Solar Panels Flexible on Roof (Optional)
- + Onyx Package Available (Optional)
- + Artisan Custom Paint Process Available (Optional)

*New for 2027

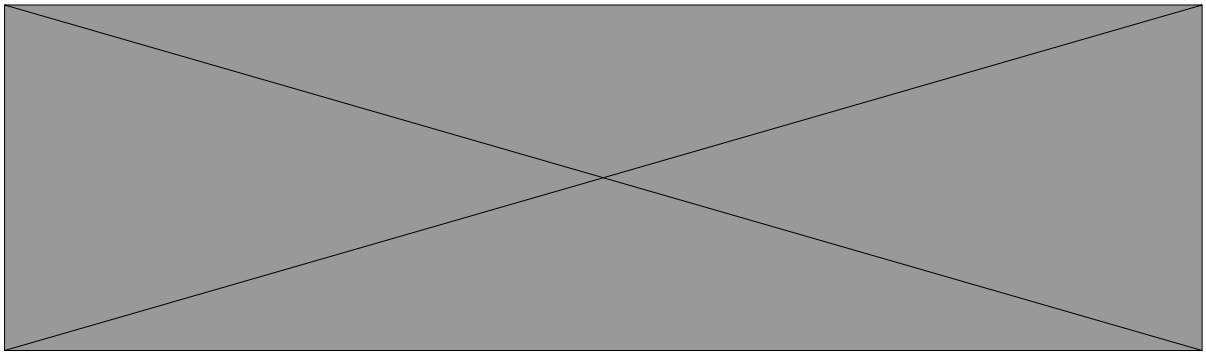


POPULAR UPGRADES

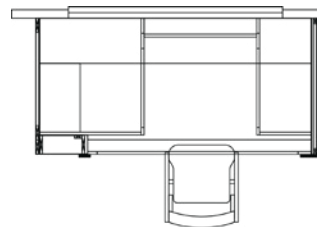
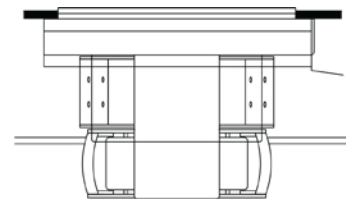
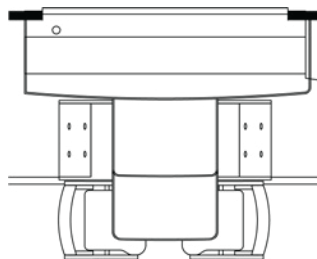
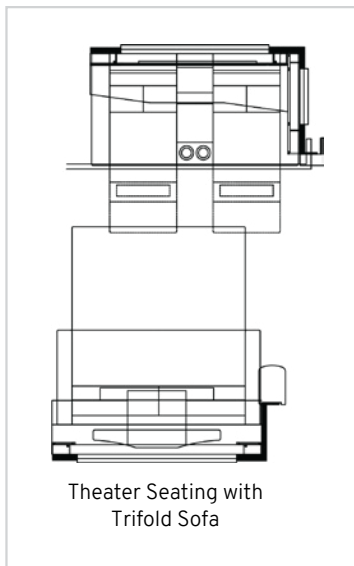
- + Onyx Package Available
- + Artisan Custom Paint Process Available
- + Powered and Non-Powered Storage Trays
- + Flag Pole Bracket

4540 FLOOR PLAN

STANDARD



OPTIONS



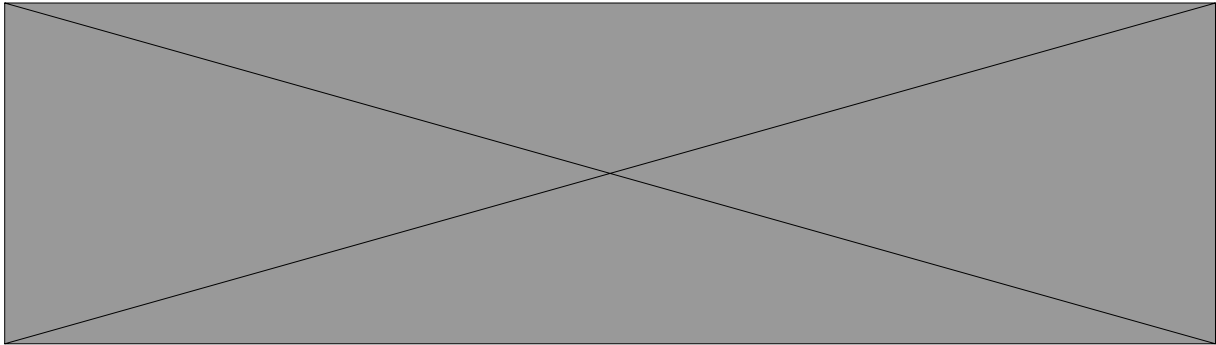
PERFECT FOR

- + Families Seeking Comfort, Sophistication and Private Space
- + Those Working From The Road

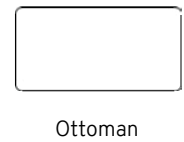
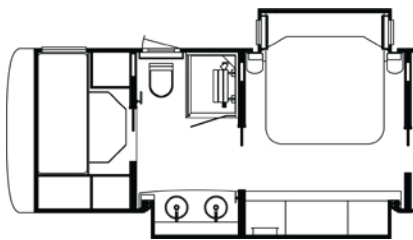
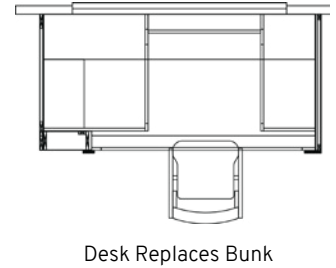
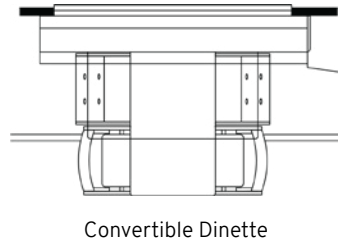
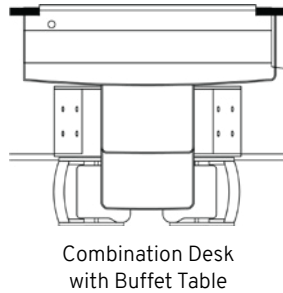
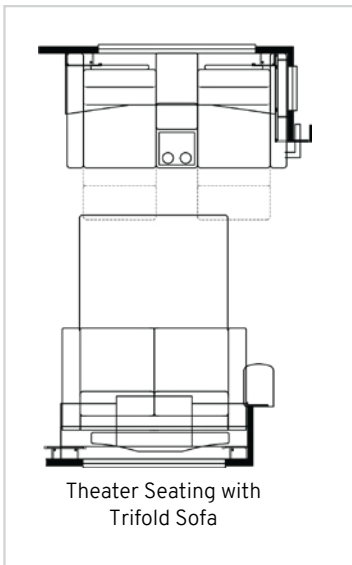
Length	34' 10"	Interior Height	83"	Furnace	35,000 BTU
Width	101.5"	Grey Tank	65 gal.	Sleeps	2-7 People
App. Overall Height	12' 10"	Sewage Tank	45 gal.		
Interior Width	95.5"	Water Tank	105 gal.		

4545 FLOOR PLAN

STANDARD



OPTIONS



PERFECT FOR

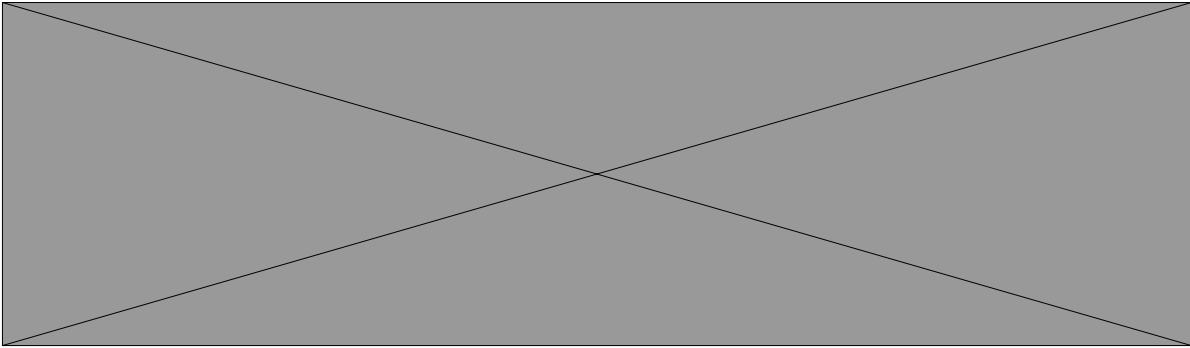
- + Couples Seeking a Spacious Master Suite with Walk-In Closet
- + Families Who Prefer Bunk Beds at the Rear of the Coach
- + Hosts Seeking Midship Half Bath

Length	37'10"	Interior Height	83"	Furnace	54,000 BTU
Width	101.5"	Grey Tank	65 gal.	Sleeps	2-4 People
App. Overall Height	12'10"	Sewage Tank	45 gal.		
Interior Width	95.5"	Water Tank	105 gal.		

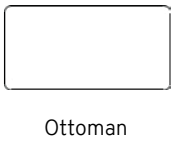
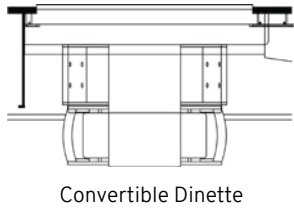
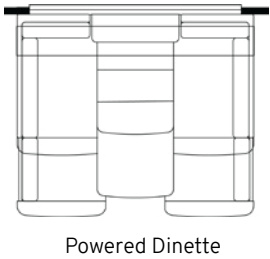
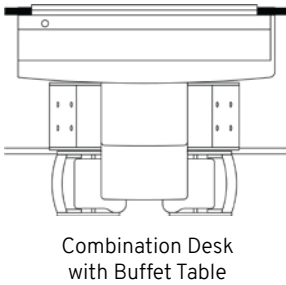
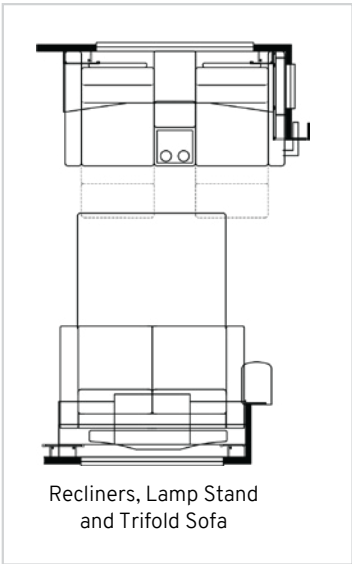
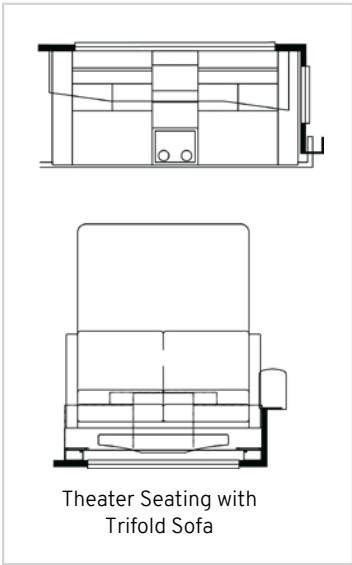
Our Best-Selling London Aire Floor Plan

4551 FLOOR PLAN

STANDARD



OPTIONS



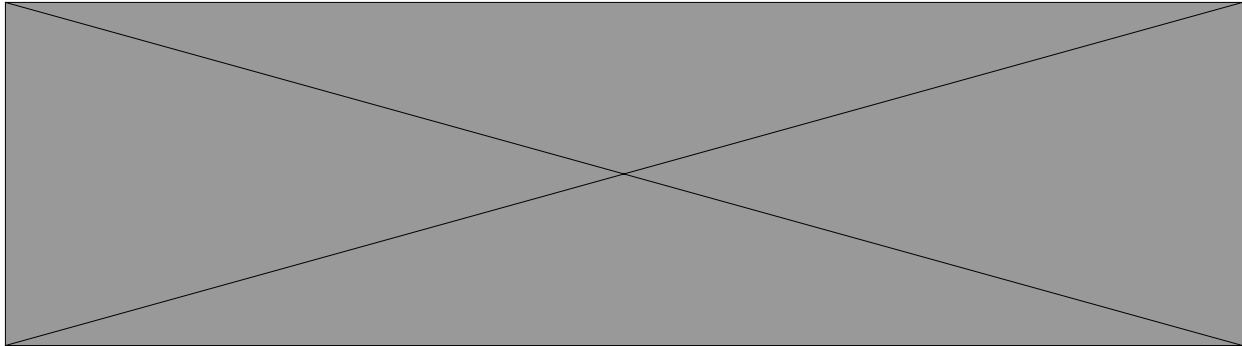
PERFECT FOR

- + Discerning Couples
- + Aspiring Chefs Seeking Spacious Kitchens
- + Hosts Seeking a Midship Half Bath

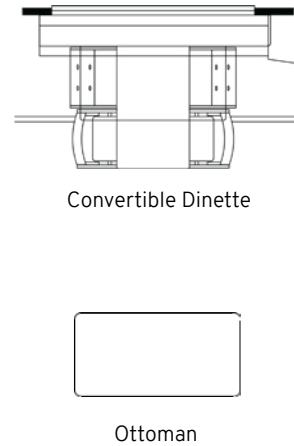
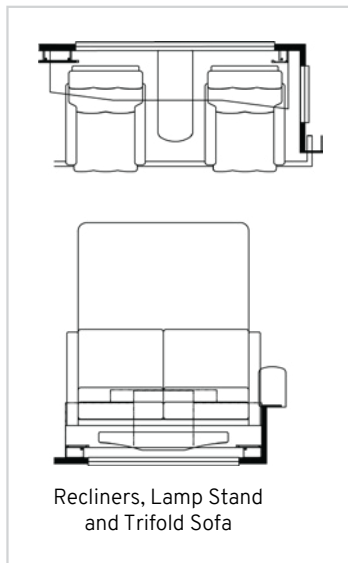
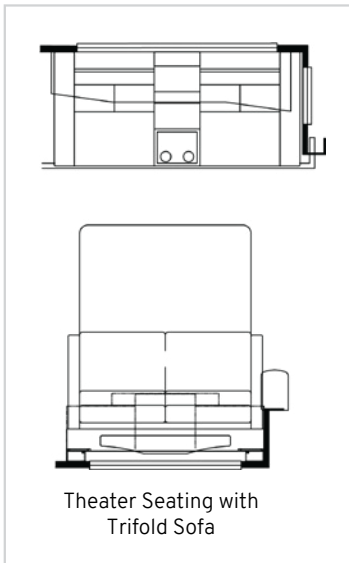
Length	40' 10"	Interior Height	83"	Furnace	54,000 BTU
Width	101.5"	Grey Tank	65 gal.	Sleeps	2-5 People
App. Overall Height	12' 11"	Sewage Tank	45 gal.		
Interior Width	95.5"	Water Tank	105 gal.		

4569 FLOOR PLAN

STANDARD



OPTIONS



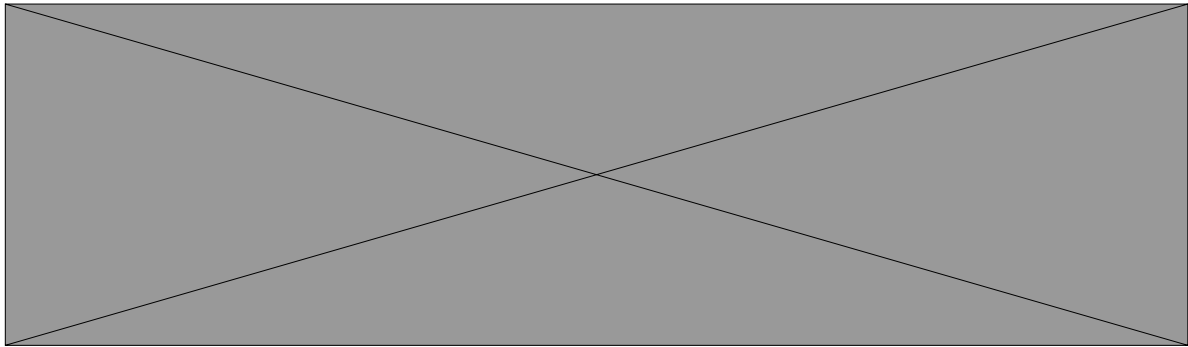
PERFECT FOR

- + Full-Timer and Most-Timer Couples
- + Chefs Seeking More Prep Space
- + Hosts Seeking Midship Half Bath

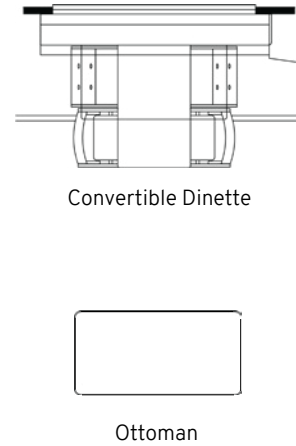
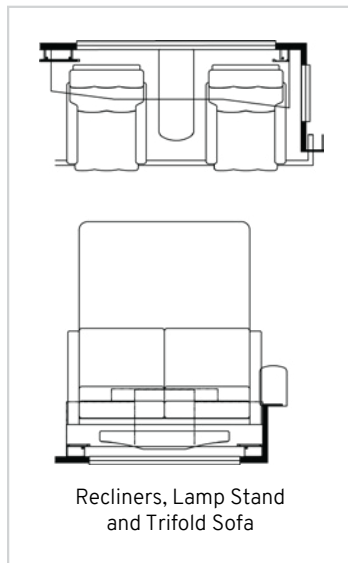
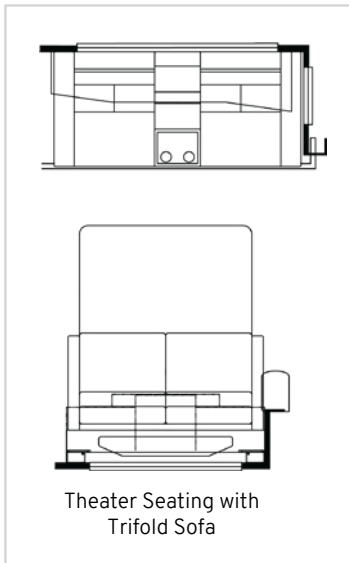
Length	40' 10"	Interior Height	83"	Furnace	54,000 BTU
Width	101.5"	Grey Tank	65 gal.	Sleeps	2-5 People
App. Overall Height	12' 11"	Sewage Tank	45 gal.		
Interior Width	95.5"	Water Tank	105 gal.		

4595 FLOOR PLAN

STANDARD



OPTIONS



PERFECT FOR

- + Full-Timer and Most-Timer Couples
- + Luxury Resort
- + Chefs Seeking More Prep Space

Length	40' 10"	Interior Height	83"	Furnace	54,000 BTU
Width	101.5"	Grey Tank	65 gal.	Sleeps	2-5 People
App. Overall Height	12' 11"	Sewage Tank	45 gal.		
Interior Width	95.5"	Water Tank	105 gal.		

FLOOR PLAN SPECIFICATIONS

FLOOR PLAN KEY FEATURES

+ 4540:

- **Perfect For:** Families Seeking Comfort, Sophistication and Private Space, Those Working From the Road
- **Key Features:** Bunk Beds That Can Be Optioned as a Dedicated Workspace, Bath and a Half Floor Plan, Washer and Dryer, Luxurious Spa Bathroom

+ 4545:

- **Perfect For:** Couples Seeking a Spacious Master Suite with Walk-In Closet, Families Who Prefer Bunk Beds at the Rear of the Coach, Hosts Seeking Midship Half Bath
- **Key Features:** Spacious Kitchen, Mid-Ship Half Bath, Luxurious Bedroom Suite with King Size Bed, Large Walk-In Closet with Washer and Dryer, Option to Convert Walk-In Closet to Bunk Beds

+ 4551:

- **Perfect For:** Discerning Couples, Aspiring Chef's Seeking Spacious Kitchens, Hosts Seeking Midship Half Bath
- **Key Features:** Our Best Selling London Aire Floor Plan, Luxury Gourmet Kitchen, King-Size Bedroom, Large 50" x 34" Residential Shower, Washer and Dryer, Midship Half Bath

+ 4569:

- **Perfect For:** Full-Timer or Most-Timer Couples, Chefs Seeking More Prep Space, Hosts Seeking Midship Half Bath
- **Key Features:** Spacious Kitchen, Extended Counter, Flexible Dining Options, Midship Half Bath, Luxurious King Bedroom

+ 4595:

- **Perfect For:** Full-Timer or Most-Timer Couples, Luxury Resort, Chefs Seeking More Prep Space
- **Key Features:** Spacious Kitchen, Flexible Dining Options, Midship Half Bath, Luxurious King Bedroom

FLOOR PLAN SPECIFICATIONS										
FLOOR PLAN	LENGTH	WIDTH	APP. OVERALL HEIGHT	INTERIOR WIDTH	INTERIOR HEIGHT	GREY TANK	SEWAGE TANK	WATER TANK	FURNACE	SLEEPS
4540	44'10"	101.5"	13'04"	95.5"	83"	80 gal.	60 gal.	105 gal.	50,000 BTU	2-7
4545	44'10"	101.5"	13'04"	95.5"	83"	80 gal.	60 gal.	105 gal.	50,000 BTU	2-4
4551	44'10"	101.5"	13'04"	95.5"	83"	80 gal.	60 gal.	105 gal.	50,000 BTU	2-5
4569	44'10"	101.5"	13'04"	95.5"	83"	80 gal.	60 gal.	105 gal.	54,000 BTU	2-5
4595	44'10"	101.5"	13'04"	95.5"	83"	80 gal.	60 gal.	105 gal.	54,000 BTU	2-5

The content in our literature depicts and describes products that are subject to change. For the most recent images and information, please visit NewmarCorp.com. Lengths, heights, widths, and dry weights are approximate. Weight will vary based on optional equipment added to the above base weight.

CHASSIS



CHASSIS

- + Freightliner® Custom Chassis SL Tag Axle
- + Spartan® K3 Tag Axle Chassis
- + California Compliance Available

HORSE POWER

605^{HP}
Cummins X15 Diesel Engine

FUEL TANK

175_{GAL}

LENGTH

45_{FT}

TORQUE

1,950_{LB/FT}

AXLES

3
Tag Axle Equipped

TIRE SIZE

22.5"

Michelin Brand
Front: 365/70R22.5 20-ply
Back & Tag: 315/80R22.5 20-ply

STEERING WHEEL

Comfort Drive™ Adaptive
Steering with Power
Column and Adjustable
Control

DIGITAL DISPLAY

Xite Dash Radio

TRANSMISSION

Allison 4000MH
Transmission

CHASSIS SPECIFICATIONS

GLOSSARY

- + **GAWR:** Gross Axle Weight Rating is the maximum permissible weight for an axle.
- + **GVWR:** Gross Vehicle Weight Rating is the maximum permissible weight for a fully loaded motor coach.
- + **GCWR:** Gross Combination Weight Rating is the value specified by the manufacturer of the vehicle as the maximum allowable loaded weight of this motor coach and any towed trailer or towed vehicle.
- + **UVW:** Unloaded Vehicle Weight is the weight of this motor coach as built at the factory with full fuel, engine oil, and coolants. Does not include cargo, fresh water, propane gas, or dealer-installed accessories.
- + **NCC:** Net Carrying Capacity is the maximum weight of all occupants, including the driver, personal belongings, food, fresh water, waste water, propane gas, tools, tongue weight of towed vehicle, dealer-installed accessories, etc., that can be carried by the motor coach.
- + Specifications supplied by the chassis manufacturer.

SPARTAN® CHASSIS												
FLOOR PLAN	ENGINE HP	AXLE RATIO	FUEL CAP.	WHEEL BASE	TIRE SIZE	FRONT GAWR	REAR GAWR	TAG GAWR	GVWR	GCWR	APP. UVW	APP. NCC
4540	605	4.3	175	292+TAG	22.5"	20000 lb.	20000 lb.	14000 lb.	54000 lb.	74000 lb.	46000 lb.	8000 lb.
4545	605	4.3	175	292+TAG	22.5"	20000 lb.	20000 lb.	14000 lb.	54000 lb.	74000 lb.	45900 lb.	8100 lb.
4569	605	4.3	175	292+TAG	22.5"	20000 lb.	20000 lb.	14000 lb.	54000 lb.	74000 lb.	45800 lb.	8200 lb.
4551	605	4.3	175	292+TAG	22.5"	20000 lb.	20000 lb.	14000 lb.	54000 lb.	74000 lb.	45900 lb.	8100 lb.
4595	605	4.3	175	292+TAG	22.5"	20000 lb.	20000 lb.	14000 lb.	54000 lb.	74000 lb.	46100 lb.	7900 lb.

FREIGHTLINER® CUSTOM CHASSIS												
FLOOR PLAN	ENGINE HP	AXLE RATIO	FUEL CAP.	WHEEL BASE	TIRE SIZE	FRONT GAWR	REAR GAWR	TAG GAWR	GVWR	GCWR	APP. UVW	APP. NCC
4540	605	4.3	175	292+TAG	22.5"	20000 lb.	20000 lb.	14000 lb.	54000 lb.	74000 lb.	46500 lb.	7500 lb.
4545	605	4.3	175	292+TAG	22.5"	20000 lb.	20000 lb.	14000 lb.	54000 lb.	74000 lb.	46500 lb.	7500 lb.
4569	605	4.3	175	292+TAG	22.5"	20000 lb.	20000 lb.	14000 lb.	54000 lb.	74000 lb.	46400 lb.	7600 lb.
4551	605	4.3	175	292+TAG	22.5"	20000 lb.	20000 lb.	14000 lb.	54000 lb.	74000 lb.	46500 lb.	7500 lb.
4595	605	4.3	175	292+TAG	22.5"	20000 lb.	20000 lb.	14000 lb.	54000 lb.	74000 lb.	46500 lb.	7500 lb.

The content in our literature depicts and describes products that are subject to change. For the most recent images and information, please visit NewmarCorp.com. Lengths, heights, widths, and dry weights are approximate. Weight will vary based on optional equipment added to the above base weight.

STANDARD FEATURES & OPTIONS

EXTERIOR FEATURES

- Exterior Full-Paint Masterpiece Finish™ with Clearcoat and Cut and Buff
- Baggage Door Close Assist
- Entrance Door Assist Handle
- Automatic Entrance Door Step
- Convex Chrome Exterior Mirrors with Defrost, Remote Control, Turn Signal Indicators and Side-View Cameras
- Front Cap Beta Fusion Protection
- Hydraulic Leveling Jacks
- Mud Flaps
- Illuminated Newmar Badge on Front Grill
- Rear Hitch for Towing Car
- Stainless Steel Exterior Trim Pieces and Entrance Door Kick Panel
- Rear Protective Tow Guard with Stainless Newmar Name Cutout
- Undercoating

OPTIONS

- Onyx Package with Black Aluminum Powder Coat Trim Kit for Exterior Compartment Doors
- Artisan Series Custom Paint Process
- Flag Pole Bracket
- Stainless Steel Trim Kit for Exterior Compartment Doors
- Non-Powered Storage Trays (Size and Placement are Floor Plan Specific)
- Powered Storage Trays (Size and Placement are Floor Plan Specific)

CONSTRUCTION FEATURES

- 16" On-Center Aluminum Frame Sidewalls and Roof Construction
- Egress Door with Ladder System
- Fiberglass Roof and Integrated Gutter Rail
- Foam Insulation 5/8" Laminated in Sidewalls and Ceiling
- Gelcoated Fiberglass Exterior Sidewalls, Front and Rear Caps
- Slideout Automatic Lock Arms on Non Hydraulic - Paddle Style

WINDOWS, AWNINGS, & VENTS

- Bunk Windows (Floor Plan 4540)
- Fan-Tastic® Vent with Hardwood Louver Cover in Kitchen
- Fan-Tastic® Vent with Rain Sensor in Kitchen, Bathroom and Enclosed Stool Room
- Dual Girard® Nova Side Awnings, Slideout Covers, Entrance Door and Power Window Awnings
- Kitchen Window
- Skylight Above Shower (Not Available on Rear Bath Floor Plans)
- Power Window on Driver Side
- Frameless Double-Pane Tinted Safety-Glass Windows
- Large Non-Ventilated Living Room and Dinette Windows
- One-Piece Tinted Windshield

CHASSIS FEATURES

- Air Leveling Control System
- Allison 6-Speed 4000 MH Auto Transmission
- Anti-Lock Braking System
- Auto Rain Sense Wipers
- Back-Up Alarm
- Battery Disconnect for Chassis Battery
- Blind Spot Detection
- Cockpit Seat Belts Latch Sensors
- Cockpit Seat Occupancy Sensors
- Comfort Drive™ Adaptive Steering with Power Column and Adjustable Control
- Cruise Control
- Electronic Chassis Information Center in Dash
- Electronic Stability Control
- Push Button Engine Start
- Glass Dash Instrument Panel
- Automatic On/Off Headlights
- Mobiley® Lane Tracking and Lane Departure Warning System
- OnGuard™ Collision Mitigation Adaptive Cruise System with Adjustable Following Distance Control
- Recessed Fuel Fills, with Cross Over to Fill From Either Side
- Seat Belt Warning Indicator in Dash Display
- Freightliner® Custom Chassis, Tag Axle, 605 HP, 45' London Aire
- Nine Function Switch Pod in Center Steering Wheel on Spartan® Chassis or Drive Tech Steering Wheel with Integrated Transmission Controls on Freightliner® Custom Chassis
- Tank Dump Side Tilt Mode
- Tire Pressures Monitoring on Chassis
- Trailer Tow Mode
- Valid Digital Glare Free Dash on Spartan® Chassis or Optiview® Glare Free Dash on Freightliner® Custom Chassis
- Valor Generation 3 TPMS System
- Aluminum Wheels

OPTIONS

- Curt Spectrum Integrated Brake Control
- Freightliner® Custom Chassis, Tag Axle, 605 HP, 45' London Aire California Compliance
- Freightliner® Custom Chassis, Tag Axle, 605 HP, 45' London Aire, Onyx Package
- Freightliner® Custom Chassis, Tag Axle, 605 HP, 45' London Aire, Onyx Package, California Compliance
- Spartan® K3, Tag Axle, 605 HP, 45' London Aire
- Spartan® K3, Tag Axle, 605 HP, 45' London Aire, Onyx Package
- Spartan® K3, Tag Axle, 605 HP, 45' London Aire, California Compliance
- Spartan® K3, Tag Axle, 605 HP, 45' London Aire, Onyx Package, California Compliance

STANDARD FEATURES & OPTIONS (CONTINUED)

AIR CONDITIONING & HEATING

- Three 15K BTU Heat Pump Air Conditioners with Remote Control Thermostat
- Air Conditioning Drainage System For Roof
- Chinook Dual Loop Heat with Continuous Hot Water
- Dash Heater and Air Conditioner
- Driver and Passenger Dash Overhead Ventilation System
- Electric Radiant Heat Installed Below Floor Tile
- Wall Mounted Sensors for Heating and Air Conditioning

ELECTRICAL FEATURES

- Accent Lights in Feature Ceiling, Lambrequins, Slideout Fascia Trim
- Automatic Generator Start on Low Battery or Temperature Setting
- Battery Disconnect Switch for House Battery
- Cable TV Connection
- Dash Radio, Cameras and Monitors to Power Up from Both House Batteries and Ignition
- Recessed Docking Lights
- 50 Amp Electrical Service with Flexible Cord and Automatic Transfer Switch
- Emergency Engine Start Switch
- Energy Management System
- Engine Block Heater
- Exterior Security Lights, One Installed On Each Side
- Generator Start/Stop Function on Touchscreen in Water Bay Compartment
- Eight 6V AGM House Batteries
- Interior Courtesy Lights
- 3000W Pure Sine Inverter
- Automatic LED Lights in Exterior Storage Compartments
- LED Lights in Pullout Pantry, Kitchen and Bathroom Base Cabinets
- LED Lights Installed Under Door-Side Slideouts
- LED Lights Recessed in Ceiling and Underneath Overhead Cabinets
- LED Lights Under Door-Side Slideouts
- Lighted Vanity Mirrors
- Lights in Exterior Storage Compartments, Controlled by an Interior Master Switch
- Lights in Wardrobes
- Midship Side Turn Signals
- Multiplex Electrical Wiring System
- Multiplex Lighting Control System
- 10.1" Multiplex Monitor System in Center of Coach with Interior Lighting and HVAC Controls
- Newmar App
- 12.5 kW Cummins Onan® Diesel Generator
- Power Rewind Reel with 50' Cord
- Dimmable Reading Lights at Head of Bed Feature Adjustable Arm
- 110V Recept in Bed Overhead with Two Pass Through Ports

- 110V/USB Recept at Head of Each Bunk Area (Floor Plan Specific)
- 12V Recept Auxiliary on Dashboard
- Manual Slideout Switch
- 10W Solar Panel to Charge Chassis Battery
- Solar Prep with 6 Gauge Wire Ran from Roof to House Battery Compartment (N/A with L020 Option)
- Spare Fuses in Chassis Fuse Panel
- Spare Fuses in House Fuse Panel
- Transfer Switch with Surge Protector
- USB Outlet at Dash for Driver Use
- USB Outlet at Dinette and Bedroom Night Stand
- Wireless Charging Mat Built into Passenger Console
- Wireless Phone Charger Pad in Driver Area

OPTIONS

- 30 Amp/120V Cord Connection for Stacker Trailer
- Exterior RGB LED Lights Below Perimeter of Unit
- 6640 AHR Lithionics® Lithium Ion Battery System with Two 3000W Pure Sine Inverters (UL Approved)
- 960 AHR Lithionics® Lithium Ion Battery System with Two 3000W Pure Sine Inverters (UL Approved)
- Four 120W Solar Panels Flexible on Roof

PLUMBING & BATH FEATURES

- Aqua Miser® Shower System
- Auto Fill for Fresh Water Tank
- Bladder Tank for Water Pump System
- Demand Water System
- Exterior Shower Located on Off-Door Side
- Grey Holding Tank Rinse
- Hot Water Line to Generator Area
- Power Reel for Water Hose
- RV Sanicon Turbo System
- Sewage Holding Tank Rinse
- Fold-Down Shower Seat
- Tiled Shower Walls with Glass Door
- Dometic® 321 China Bowl or Macerator China Bowl Stool
- Water Filter for Entire Unit

OPTIONS

- Bidet Stool in Rear Bath
- Pressure Washer with Soft Water System
- Assist Handle in Shower

INTERIOR FEATURES

- Auto Motion Power Shade at Windshield and Power Shades at Driver and Passenger Side Windows
- Auto Motion Power Window Shades and Lambrequins
- Fitted Bedsread and Accent Pillows

STANDARD FEATURES & OPTIONS (CONTINUED)

Designer Feature Ceiling with Cathedral Ceiling and Added Height
Interior Passage Hardwood Raised Panel Doors
Flush Handle on Swinging Bath Doors
Interior Assist Handle at Main Entry Door
Safe Located in Wardrobe
Maximized Shoe Storage Shelves Recessed in Rear of Wardrobe (Floor Plan Specific)
Tile Floor in Kitchen, Bathroom, Bedroom and Living Areas
Waste Basket in Kitchen Base Under Sink
OPTIONS
<input type="checkbox"/> Pet Package: Includes Newmar-Branded Splash-Proof Water and Food Bowls, Exterior Leash Hook and Retractable Gate (Optional)

CABINETS & FURNITURE
Soft-Close Cabinet Drawers
Self-Closing Dovetail Cabinetry Drawers
Mesh Cell Phone Holder at Each Bunk Bed (Floor Plan Specific)
Cooktop Cover Sits Flush and Matches Countertop
Super Polished Solid-Surface Countertop in Bathroom and Bedroom
Super Polished Solid-Surface Countertop in Kitchen, Undermounted Stainless Steel Sink and Sink Covers
Euro Booth Dinette with Two Table Leaves and Two Folding Chairs
Air-Cooled Driver and Passenger Seats
Heated Driver and Passenger Seats with Power-Lumbar, Recline, Footrest and Standard Width Passenger Seat
Driver Seat with Vibration for Mobileye® System
Italian Leather Sofa and Front Seats with Integrated Seat Belts
Lifts On Bed Top
Plush Pillow Top Mattress
Molded Silverware Divider Tray
Push-to-Release Pantry Drawer Slides
Pullout Pantry Shelves (See Floor Plans for Availability)
Pantry with Large Drawer for Pots and Pans
Side Hide-a-Bed Sofa with Memory Foam Mattress on Most Floor Plans
Full-Height Wardrobe (Floor Plan Specific)
OPTIONS
<input type="checkbox"/> Desk and Chair Replaces Midship Bunks to Create Workspace (Floor Plan 4540)
<input type="checkbox"/> Combo Desk Dinette with Buffet Table, Two Fixed and Two Folding Chairs
<input type="checkbox"/> Convertible Dinette with Two Fixed and Two Folding Chairs that Face to Window or Fore/Aft Seating
<input type="checkbox"/> Power Extenda Flex Dinette
<input type="checkbox"/> Replace Front Overhead TV with Cabinets
<input type="checkbox"/> Air Mattress with Remote
<input type="checkbox"/> One Ottomans - Not Available with Theater Seating
<input type="checkbox"/> Queen-Size Passenger Seat

<input type="checkbox"/> Two Recliners with Reading Lights And Lampstand Replaces Side Hide-A-Bed on Off-Door Side, 68" Trifold Sofa Replaces Jackknife Sofa on Door Side (Floor Plans 4551 & 4569)
<input type="checkbox"/> Two Recliners with Reading Lights and Lampstand Replaces Side Hide-A-Bed Off-Door Side, 74" Trifold Sofa Replaces Jackknife Sofa on Door Side (Floor Plan 4595)
<input type="checkbox"/> 74" Powered Theater Seating with Adjustable Headrests Replaces Hide-A-Bed on Off-Door Side, 62" Trifold Sofa Replaces Jackknife On Door Side (Floor Plan 4540)
<input type="checkbox"/> 74" Powered Theater Seating with Adjustable Headrests Replaces Hide-A-Bed on Off-Door Side, 74" Trifold Sofa Replaces Jackknife On Door Side (Floor Plan 4540)
<input type="checkbox"/> 87" Powered Theater Seating with Adjustable Headrests Replaces Side Hide-A-Bed on Off-Door Side, 68" Trifold Sofa Replaces Jackknife Sofa on Door Side (Floor Plan 4551 & 4569)
<input type="checkbox"/> 87" Powered Theater Seating with Adjustable Headrests Replaces Hide-A-Bed On Door Side, 74" Trifold Sofa Replaces Jackknife Sofa on Door Side (Floor Plan 4595)

APPLIANCES & ACCESSORIES
Air Horns
All-Electric Induction Flush Mount Cooktop
Central Vacuum with Tool Kit
3 Cu. Ft. Dometic® Freezer on Pullout Tray in Exterior Compartment
30" Stainless Steel Convection Microwave with Air Fryer Feature
Samsung® Refrigerator with Icemaker
Storage Shelf Above Freezer
Stacked Two-Piece Splendide® Washer and Dryer
OPTIONS
<input type="checkbox"/> Dual-Zone Beverage Center
<input type="checkbox"/> Narrow Beverage Refrigerator in Pantry (Holds Six Bottles)
<input type="checkbox"/> Dishwasher in a Drawer with Wood Front Located Below Cooktop

AUDIO, VIDEO & ACCESSORIES
Cat6 TV Cables
Doorbell Camera System at Entrance Door Connects to Newmar App
Exterior Entertainment Center with 43" Samsung® 4K LED TV and Soundbar
10 BC Fire Extinguisher, Carbon Monoxide, Smoke Detectors
Infrared Repeater System to Operate Audio/Video Components
Radio SiriusXM® Capability with Antenna (Subscription Required)
Rear-View Color Monitor System with Audio
Satellite Dish Prep on Roof
Bose® Smart Ultra Soundbar in Living Room
Bose® 500 Subwoofer
TV Jack and 110V Recept in Door-Side Exterior Storage Compartment
43" Samsung® 4K LED TV in Front Overhead
50" Samsung® 4K LED TV on Televator in Living Area

STANDARD FEATURES & OPTIONS (CONTINUED)

Samsung® LED TV in Living and Bedroom Areas (TV Sizes Vary per Floor Plan)

Starlink Internet System (Subscription Required)

Xite HD 360 Camera System with Grid Lines and Tri-View Rear Camera

OPTIONS

- Extra Monitor on Passenger Side
- Starlink Performance Internet System (Subscription Required)
- Two 19" Skyworth TV/DVD Monitors - One at Each Standard Bunk (Floor Plan Specific)
- Universal Remote Control
- Universal Toll Module
- Two Rear Camera Prep for Use on Stacker
- Xite Dash Radio with Apple CarPlay®, 10" Dual Monitor with Nav-N-Go Navigation System
- Everest WiFi System with Aspen Interior Router
- Winegard® Rayzar Automatic Digital TV Antenna

OUR PARTNERS

THE NEWMAR DIFFERENCE™

The Newmar Difference™ begins with suppliers dedicated to providing our customers with unrivaled quality, comfort, and support. We only work with suppliers that are dedicated to providing our customers with unrivaled innovation, comfort, and reliability. It's all so you can experience best-in-class performance from names you can trust. At Newmar, that's our difference, and our promise.



BASF

The Coatings division of BASF is a global expert in the development and production of innovative and sustainable OEM and refinish coatings. Coatings by BASF—solutions beyond your imagination.



Freightliner® Custom Chassis

Freightliner® Custom Chassis are renowned for their exceptional ride, excellent maneuverability, advanced technology, and nationwide 24/7 factory-direct support.



Spartan® RV Chassis

An American company with over 40 years of experience in designing and manufacturing the premier motorhome chassis, Spartan® delivers superior performance, exceptional safety ratings, and industry-leading technology.



Industrial Finishes

Industrial Finishes has supported RV manufacturers for over four decades, offering paint products that deliver uncompromising quality and provide your coach with a true Masterpiece™ finish.



RiverPark

From Samsung® 4K TVs and Xite Infotainment systems to Bose® soundbars and JBL and Infinity premium audio systems, RiverPark helps ensure you enjoy the ultimate audio-visual technology in your Newmar coach.

THE NEWMAR CUSTOMER EXPERIENCE

The Newmar Difference™ goes beyond our industry-leading motor coaches to provide you with an unrivaled ownership experience.



Crafted with Purpose

Every Newmar is crafted one at a time by folks who have spent an average of eight years building them. Each coach we assemble must undergo more than 1,000 tests and checks before ever leaving our factory.



More Than a Number

Meet fellow owners through the Newmar Kountry Klub, a top social club for RV travelers that hosts rallies and other special events throughout the U.S. and Canada.



The Highest Standards

We view our dealership network in terms of quality, not quantity. Each of our dealers acts as a partner in our shared mission to exceed your highest of expectations, for an ownership experience that's second to none from day one.



Seamless Service

When you join the Newmar family, we pair you with a dedicated service specialist with expert knowledge of your exact coach. Our service specialists guarantee dealer warranty authorizations within four business hours and ship all in-stock parts the same day, free of charge.



Built Around You

As a Newmar owner, you'll find resources specific to your coach through Newgle, an easy-to-use knowledge base that houses everything from user guides to technical support documents.



Without Compromise

All models include a one-year/unlimited mileage limited warranty and a five-year, non-transferable structural warranty that covers your coach's superstructure in the event it fails to perform. Ask your Newmar dealer for more details.

CONTACT

Newmar Corporation
1952 Cheyenne St.
Nappanee, IN 46550

+ Phone: 574-773-7791
+ Fax: 574-773-2895
+ NewmarCorp.com

