



2027 KING AIRE



LUXURIOUS. COMMANDING. EXQUISITE.

WHY KING AIRE

The 2027 King Aire delivers an elevated luxury travel experience with expansive living space, refined design, and effortless personalization. Featuring a chef-inspired kitchen with Wolf® and Viking® appliances, one-of-a-kind Artisan Series Custom Paint Process options, pet-friendly features, and standard Starlink connectivity, it's built for elegant entertaining and everyday comfort. Backed by Newmar's STAR Foundation and advanced lithium-ion power system, the King Aire offers uncompromising performance with the freedom to live and travel your way.

NEW FEATURES FOR 2027

- + Upgraded House Theater Sound Quality on Bose® Smart Ultra Soundbar
- + Theater Seating Featuring Adjustable Headrests (Optional)
- + Starlink Internet System Now Standard (Subscription Required)
- + Now Featuring Large Drawer in Pantry for Small Appliances
- + Theater Seating Featuring Adjustable Headrests (Optional)
- + Beverage Center in Pantry - Holds Up to 6 Bottles (Optional)
- + Now Offering One Touch Operation for Cockpit Shades
- + Pet Package: Includes Newmar-Branded Splash-Proof Water and Food Bowls, Exterior Leash Hook and Retractable Pet Gate (Optional)



FLOOR PLANS

3

+ Length 45'

EXTERIORS

4

- + Onyx Package Available
- + Artisan Series Custom Paint Process Available

INTERIOR DÉCORS

8

- + 4 Refined Design Expressions
- + 4 Regal Design Expressions

CUSTOMIZATIONS

- + **Customization Options Include:** paint colors, fabrics, flooring, window sizes, vent options, doors and cabinet fronts
- + **Kitchen and Bath Customizations:** backsplashes, sinks, plumbing fixtures, and cabinet hardware
- + **Electrical Customizations:** interior and exterior outlet placement and custom wiring runs based on preference



WHY NEWMAR

Every Newmar coach is crafted with purpose, tailored to you, and backed by unwavering support. This relentless pursuit of excellence shapes everything we do. From the precision of our engineering to the responsiveness of our service. From the innovation in our designs to the personalization that honors our customer’s vision.

PRODUCT FEATURES

STAR Foundation

Your foundation for confidence begins with stability. The exclusive STAR Foundation delivers both strength and serenity through its precisely engineered steel superstructure. Carefully welded to every luxury chassis, you'll experience a ride that's both quiet and more stable.

Residential Build

At Newmar, we craft every coach with the same proven techniques used in quality residential construction. Strong, layered sidewalls pair with precisely placed C-channel aluminum studs set 16 inches on-center, while a robust truss-built roof protects your investment for the long haul. Inside, premium flooring adds stability and comfort, and durable aluminum-framed windows are built to stand the test of time, coming together to deliver a coach made to last.

Comfort Drive™

The freedom of the open road deserves control that matches your confidence. Standard on every diesel pusher and luxury model, Comfort Drive™ with Passive Steer technology puts car-like handling at your fingertips—because your journey should be defined by discovery, not compromise.

Masterpiece Finish™

Every Newmar coach is finished with our Full-Paint Masterpiece Finish™, an industry-exclusive process crafted with premium BASF paints and applied entirely within our own 45,000-square-foot paint facility by skilled Newmar artisans. We were the first RV manufacturer to offer full-body paint across every model we build—a testament to our unwavering commitment to quality and our belief that your motorhome should be as beautiful on the outside as it is welcoming on the inside.



NEWMAR SERVICE

At Newmar, we deliver a seamless service experience designed to get you back out on the road as soon as possible. It's all about providing you with an uncompromising service experience from the day you take delivery of your new home on wheels.

SERVICE FEATURES

Personal Service Tech

The Newmar Service Center offers personal service technicians and the ability to camp onsite with full hookups, receive in-depth education, use private workstations, visit with other Newmar owners in our lounge, and enjoy convenient laundry facilities along with dedicated pet lounges and a pet park.

NewServ Mobile

With NewServ, our technicians come to you for routine maintenance. Services like appliance fixes, water pump maintenance, and more are available in Southern California, Arizona, and Central Florida. To schedule your appointment, call **800-731-8300**.

Newgle for Product Knowledge

Explore Newgle—our free online knowledge base—packed with information straight from Newmar, as well as our component manufacturers and suppliers.

Dedicated Brand Specialists

Newmar Service Account Managers, otherwise known as Brand Specialists, provide dealer warranty service authorizations within four business hours, and ship all in-stock parts the same day, via free ground shipment. And if a part is out of stock, they'll either pull it from the production floor or order the part from the appropriate supplier immediately.



HARDWOOD CABINETRY OPTIONS

SUMMIT AND CHESTNUT TWO-TONE (SHOWN IN IMAGE)



FEATURES

- + Maple Hardwood Cabinet Doors in Suede or Diamond Gloss Finish
- + Available in Five Solid Colors and Four Two-Tone Finishes
- + Concealed Cabinet Door Hinges
- + Soft-Close Cabinet Drawers
- + Dovetail Cabinetry Drawers with Self-Closing Full Extension Ball Bearing Guides

CABINET COLOR OPTIONS



TWO-TONE OPTIONS



INTERIOR DECOR OPTIONS

CASTLETON REFINED (SHOWN IN IMAGES)



Leather Furniture & Ceiling Accent



Dinette Chair & Pillows



Bedsread & Bedroom Windows



Bed Pillow



Porcelain Flooring (Or Optional Polished Porcelain)



Countertops

STAFFORD REFINED



Leather Furniture & Ceiling Accent



Dinette Chair & Pillows



Bedsread & Bedroom Windows



Bed Pillow



Porcelain Flooring (Or Optional Polished Porcelain)

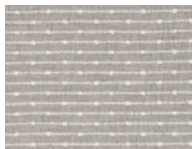


Countertops

KINGSTON REFINED



Leather Furniture & Ceiling Accent



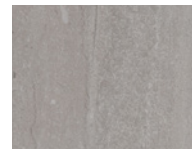
Dinette Chair & Pillows



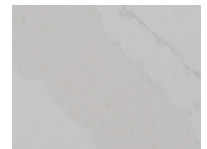
Bedsread & Bedroom Windows



Bed Pillow

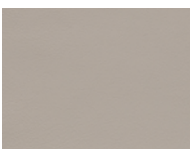


Porcelain Flooring (Or Optional Polished Porcelain)

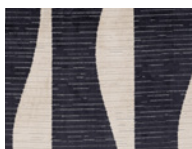


Countertops

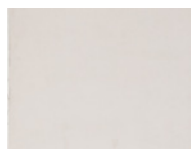
BRENTWOOD REFINED



Leather Furniture & Ceiling Accent



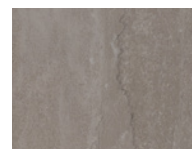
Dinette Chair & Pillows



Bedsread & Bedroom Windows



Bed Pillow



Porcelain Flooring (Or Optional Polished Porcelain)



Countertops

Exterior color and interior décor options may be matched to customer preference, subject to availability. Please see your dealer for details.

INTERIOR DECOR OPTIONS

ABILENE REGAL



Leather Furniture & Ceiling Accent



Dinette Chair & Pillows



Bedsread & Bedroom Windows



Bed Pillow



Porcelain Flooring
(Or Optional Polished Porcelain)



Countertops

KENSINGTON REGAL



Leather Furniture & Ceiling Accent



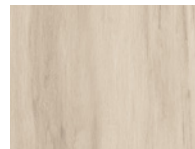
Dinette Chair & Pillows



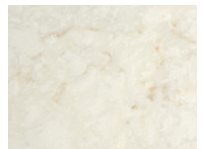
Bedsread & Bedroom Windows



Bed Pillow

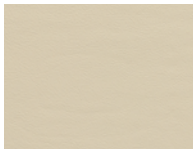


Porcelain Flooring
(Or Optional Polished Porcelain)



Countertops

MIRAMAR REGAL



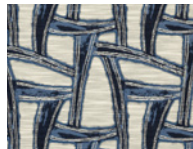
Leather Furniture & Ceiling Accent



Dinette Chair & Pillows



Bedsread & Bedroom Windows



Bed Pillow

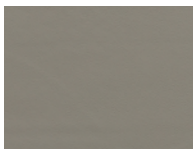


Porcelain Flooring
(Or Optional Polished Porcelain)

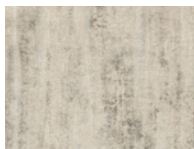


Countertops

WICKHAM REGAL



Leather Furniture & Ceiling Accent



Dinette Chair & Pillows



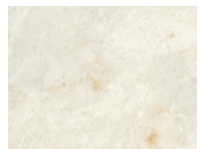
Bedsread & Bedroom Windows



Bed Pillow



Porcelain Flooring
(Or Optional Polished Porcelain)



Countertops

Exterior color and interior décor options may be matched to customer preference, subject to availability. Please see your dealer for details.

EXTERIOR DESIGN OPTIONS



BORDEAUX

Charcoal Tweed Awning

CARBONADO

Charcoal Tweed Awning



HEMATITE

Charcoal Tweed Awning



MARQUIS

Charcoal Tweed Awning



SAPPHIRE

Charcoal Tweed Awning



FEATURES

- + Industry-Exclusive Full-Paint Masterpiece Finish™ with Clearcoat and Cut and Buff
- + New Exterior Graphics and Colors with Five Color Combinations*
- + Ability to Customize Color Selections

- + Front Cap Diamond Shield Protection
- + Artisan Series Custom Paint Process Available (Optional)
- + Onyx Package Available (Optional)

*New for 2027

Exterior color and interior décor options may be matched to customer preference, subject to availability. Please see your dealer for details.

ONYX EXTERIOR PACKAGE

KEY FEATURES

- + The Onyx Exterior Package replaces standard chrome accents with a sleek, blacked-out finish.
- + Exclusively available on the following coaches: King Aire, Essex, London Aire, Mountain Aire, New Aire, Dutch Star, Summit Aire, Supreme Aire, Super Star, Grand Star and Freedom Aire.
- + Not available on Bay Star, Bay Star Sport, Ventana, Northern Star and Canyon Star.
- + The Onyx Exterior Package is exclusively pre-order only and is not available aftermarket. To request a bold black-out style, see your Newmar dealer prior to purchase.

The Onyx Package includes the following features:

- + Front Cap Accents
- + Rear Cap Accents
- + Entrance Grab Handle
- + Rock Guard
- + Wheels and Center Caps
- + Mirrors
- + Front and Back Logos
- + Baggage Door Trim*

DUTCH STAR FEATURED IN IMAGES



*Baggage door trim is Standard on the King Aire, but optional for other eligible coaches.

THE ARTISAN SERIES CUSTOM PAINT PROCESS

EXCLUSIVE ONE-OF-ONE

- + Make an unmistakable statement with our new Artisan Series Custom Paint Process—a revolutionary approach to luxury coach aesthetics.
- + Every design is individually crafted once created, it’s never repeated. Your custom coach is an exclusive reflection of you, truly one-of-a-kind.
- + It begins with your dealer, who will navigate you through exclusive graphic treatments and help tailor a color palette that embodies your vision.
- + Artisan Series Custom Paint Process elevates our most prestigious: King Aire, Essex, London Aire, Summit Aire and the 45’ Supreme Aire.

KING AIRE AND SUMMIT AIRE FEATURED IN IMAGES



COCKPIT

KEY FEATURES

- + Italian Leather Heated and Air-Cooled Driver and Passenger Seats with Power-Lumbar, Recline, and Footrest
- + OnGuard™ Collision Mitigation
- + Industry-First Comfort Drive™ Adaptive Steering
- + Mobileye® Lane Tracking and Departure System
- + Electronic Stability Control
- + Xite Dash Radio with Apple CarPlay®, 10" Dual Monitor with Nav-N-Go Navigation System
- + Auto Rain Sense Wipers
- + Push Button Start



POPULAR UPGRADES

- + Queen-Size Passenger Seat
- + Two Rear Camera Prep for Use with Stacker Trailer
- + Security System

CABIN

KEY FEATURES

- + Two Design Expressions: Regal and Refined for a Total of 8 Décor Options
- + Italian Leather Furniture Throughout
- + 55" Samsung® 4K QLED TV
- + 43" Samsung® 4K QLED TV in Front Overhead Cabinet
- + Three 15K BTU Heat Pump Central Air Conditioners
- + ATC Control Panel Connects via Bluetooth® to the Newmar App
- + Starlink Internet System (Subscription Required)
- + Pet Package: Includes Newmar-Branded Splash-Proof Water and Food Bowls, Exterior Leash Hook and Retractable Pet Gate (Optional)*



*New for 2027



POPULAR UPGRADES

- + Powered Theater Seating with Adjustable Headrests (See Floor Plan for Availability)
- + Starlink Performance Internet System
- + Pet Package: Includes Newmar-Branded Splash-Proof Water and Food Bowls, Exterior Leash Hook and Retractable Pet Gate
- + Cabinets Over Sofa and Dinette

GALLEY & DINETTE

KEY FEATURES

- + Italian Leather Euro Booth Dinette (Additional Dinette Configurations Available)
- + 19.8 Cu. Ft. Viking® Stainless Steel Refrigerator with French Door and Internal Ice Maker
- + Viking® Stainless Steel Convection Microwave
- + Wolf® All-Electric Induction Cooktop
- + Fisher & Paykel® Dishwasher with Wood Panel Front
- + Walk-In Pantry (Floor Plan 4596)



POPULAR UPGRADES

- + Narrow Beverage Refrigerator in Pantry (Holds Six Bottles)
- + Dual-Zone Beverage Center (Floor Plan 4596)
- + Wolf® Coffee Maker (Floor Plan 4596)
- + Dual-Zone Wine Cooler (Floor Plan 4596)

BEDROOM

KEY FEATURES

- + Primary Suite with King-Size Bed with Adjustable Support Air Mattress
- + Large Lighted Wardrobe with Sliding Doors, Cedar Paneling, Built In Safe and Shoe Storage
- + 50" Samsung® 4K QLED TV
- + Spacious 30" x 72" Bunks Mid-Ship
- + Fitted Down Alternative Bedsread and Accent Pillows
- + Lifts on Bed Top
- + Super-Polished Quartz Countertop
- + Fireplace (Optional)
- + Option to Convert Bunk Beds to Dedicated Workspace with Desk and Chair (Floor Plan 4540)
- + Two 19" TV/DVD Skyworth Monitors - One at Each Bunk



POPULAR UPGRADES

- + Fireplace
- + Convert Bunks to Dedicated Workspace with Desk and Chair (Floor Plan 4540)

BATHROOM

KEY FEATURES

- + Bath and a Half Model with Luxurious Full-Bath in Rear and Midship Half Bath
- + Dual Sinks and Fully Tiled Residential Shower in Full Bath
- + Cathedral Ceiling in Bathroom For Added Height
- + Aqua Miser® Shower System
- + Samsung® Two-Piece Stacked Washer and Dryer
- + Super-Polished Quartz Countertops in Master Bathroom
- + Safe in Wardrobe



POPULAR UPGRADE
+ Bidet Stool

EXTERIOR FEATURES

KEY FEATURES

- + Industry-Exclusive Full-Paint Masterpiece Finish™ with Clearcoat and Cut and Buff
- + Girard® Dual Nova Side Awnings with Wind Sensor, Remote Control and LED Lights
- + Exterior RGB LED Lights Below Perimeter of Unit
- + Exterior Entertainment in Sidewall with 43" Samsung® 4K QLED TV
- + Hydraulic Smart-Level Leveling Jacks with Bluetooth Compatible Touchpad
- + Baggage Door Close Assist
- + 2.47 Cu. Ft. Dometic® Freezer on Pullout Tray
- + Power Pass-Through Storage Trays with One Storage Shelf per Tray
- + Push-Button Release Baggage Door, Keyless Entrance Door with Touchpad and Doorbell
- + Four 640 AHR Lithionics® Lithium Ion Battery Power Packs (UL Approved)
- + Four Flexible 120W Solar Panels on Roof (Optional)
- + Onyx Package Available (Optional)
- + Artisan Series Custom Paint Process Available (Optional)



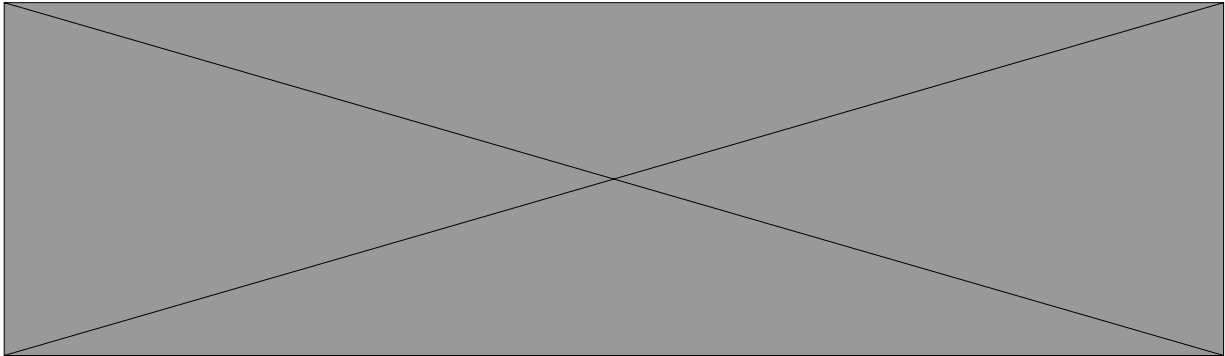
POPULAR UPGRADES

- + Onyx Package
- + Artisan Series Custom Paint Process
- + Four Flexible 120W Solar Panels on Roof
- + 30 Amp/120V Cord Connection for Stacker Trailer
- + Flag Pole Bracket

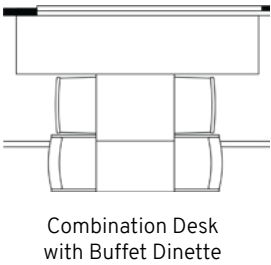
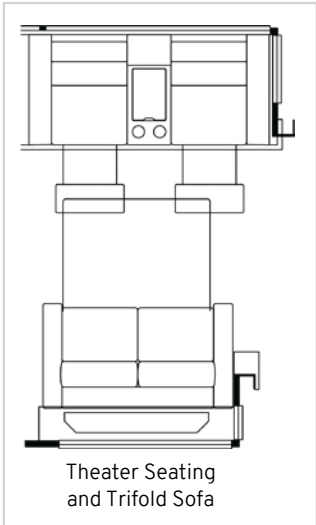
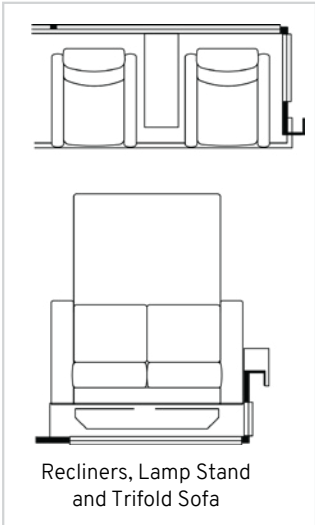
4531 FLOOR PLAN

Our Best-Selling King Aire Floor Plan

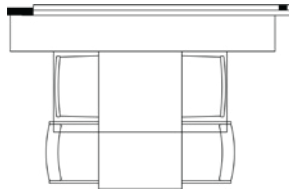
STANDARD



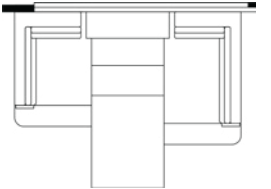
OPTIONS



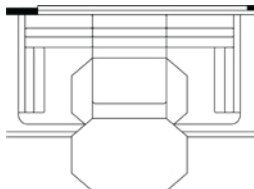
Combination Desk with Buffet Dinette



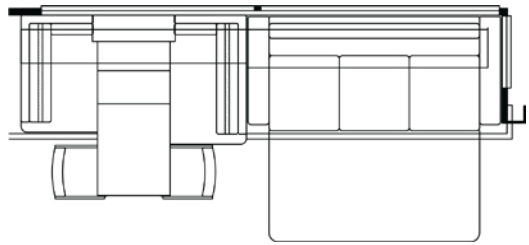
Convertible Dinette



Powered Dinette



U-Dinette



Sofa/Dinette Overhead Cabinets



Overhead Cabinet Above Bed



Ottoman

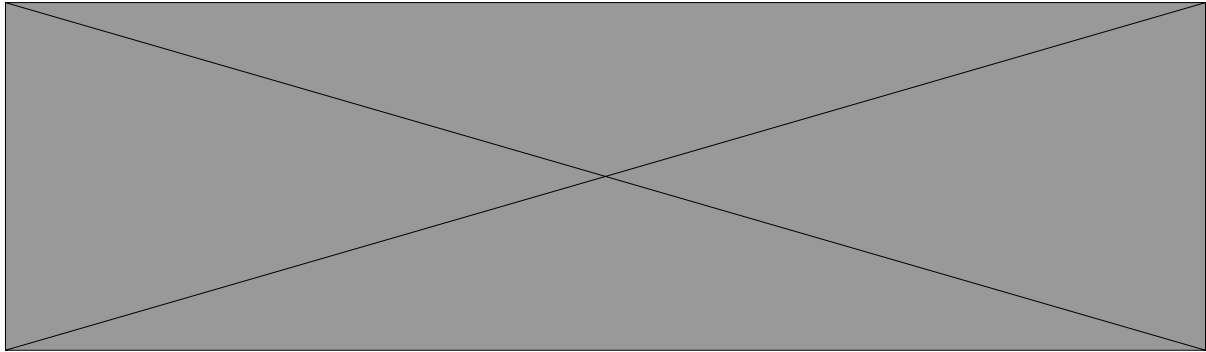
PERFECT FOR

- + Extended-Stay Travelers
- + Couples Who Love to Host

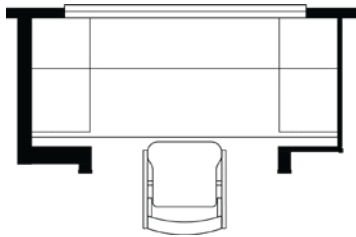
Length	44' 11"	Interior Height	83"	Furnace	85,000 BTU
Width	101.5"	Grey Tank	80 gal.	Sleeps	2-5 People
App. Overall Height	13' 04"	Sewage Tank	60 gal.		
Interior Width	95.5"	Water Tank	105 gal.		

4540 FLOOR PLAN

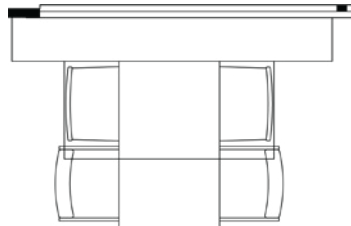
STANDARD



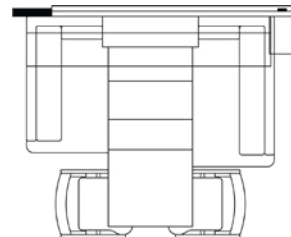
OPTIONS



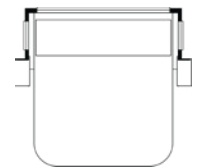
Desk Replaces Bunks



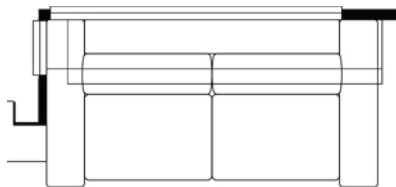
Convertible Dinette



Dinette Overhead Cabinet



Overhead Cabinet Above Bed



Sofa Overhead Cabinet



Ottoman

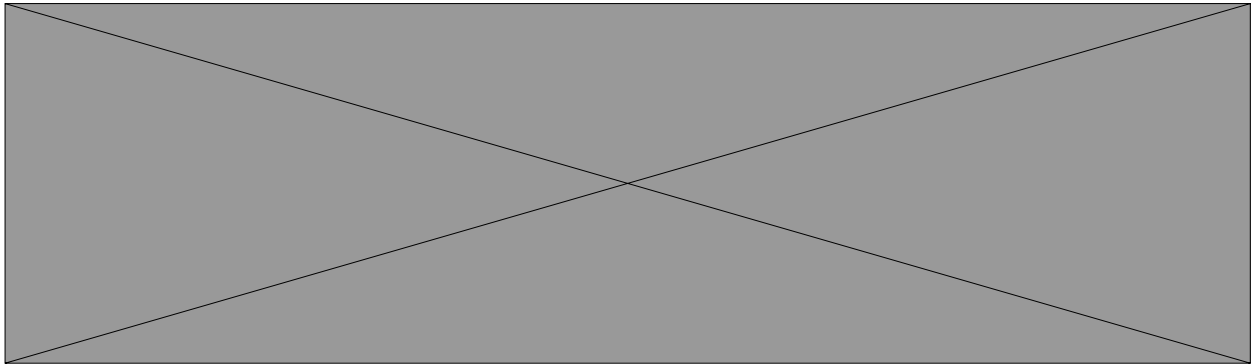
PERFECT FOR

- + Families Desiring the Ultimate Luxury
- + Those Seeking a Dedicated Work Space

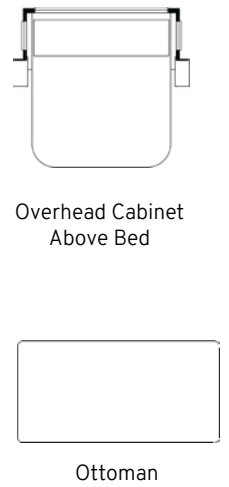
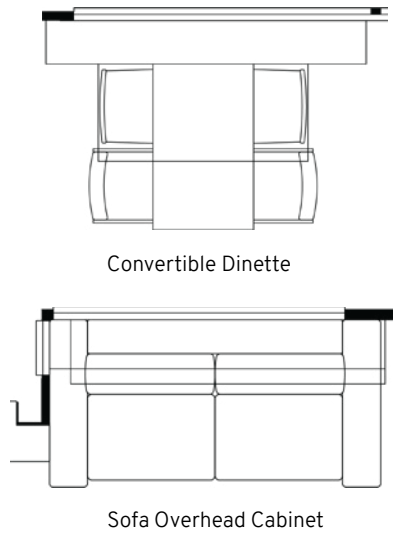
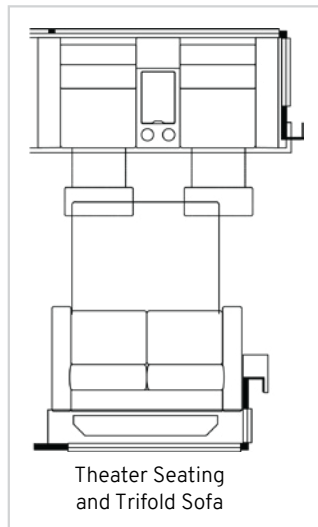
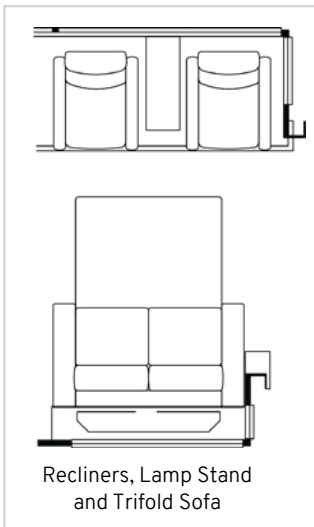
Length	44' 11"	Interior Height	83"	Furnace	85,000 BTU
Width	101.5"	Grey Tank	80 gal.	Sleeps	2-7 People
App. Overall Height	13' 04"	Sewage Tank	60 gal.		
Interior Width	95.5"	Water Tank	105 gal.		

4596 FLOOR PLAN

STANDARD



OPTIONS



PERFECT FOR

- + Hosts and Culinary Enthusists
- + Discerning Couples Desiring Ultimate Luxury

Length	44' 11"	Interior Height	83"	Furnace	85,000 BTU
Width	101.5"	Grey Tank	80 gal.	Sleeps	2-5 People
App. Overall Height	13' 04"	Sewage Tank	60 gal.		
Interior Width	95.5"	Water Tank	105 gal.		

FLOOR PLAN SPECIFICATIONS

FLOOR PLAN KEY FEATURES

+ 4531:

- **Perfect For:** Extended-Stay Travelers, Couples Who Love to Host
- **Key Features:** Best-Selling Floor Plan, Gourmet Kitchen, King-Size Bedroom Suite, Spa-Inspired Bathroom, Midship Half Bath, Integrated Washer and Dryer

+ 4540:

- **Perfect For:** Families Desiring the Ultimate Luxury, Those Seeking a Dedicated Office Space
- **Key Features:** King-Size Bedroom Suite, 30" x 72" Bunk Beds, Midship Half Bath, Option to Convert Bunks to Dedicated Workspace, Spa-Inspired Bathroom, Midship Half Bath, Integrated Washer and Dryer

+ 4596:

- **Perfect For:** Hosts and Culinary Enthusists, Discerning Couples Desiring Ultimate Luxury
- **Key Features:** King-Size Bedroom Suite, Midship Half Bath, Walk-In Pantry, Optional Wolf® Espresso Machine and Beverage Refrigerator, Integrated Washer and Dryer

FLOOR PLAN SPECIFICATIONS										
FLOOR PLAN	LENGTH	WIDTH	APP. OVERALL HEIGHT	INTERIOR WIDTH	INTERIOR HEIGHT	GREY TANK	SEWAGE TANK	WATER TANK	FURNACE	SLEEPS
4531	44' 11"	101.5"	13' 04"	95.5"	83"	80 gal.	60 gal.	105 gal.	85,000 BTU	2-5
4540	44' 11"	101.5"	13' 04"	95.5"	83"	80 gal.	60 gal.	105 gal.	85,000 BTU	2-7
4596	44' 11"	101.5"	13' 04"	95.5"	83"	80 gal.	60 gal.	105 gal.	85,000 BTU	2-5

The content in our literature depicts and describes products that are subject to change. For the most recent images and information, please visit NewmarCorp.com. Lengths, heights, widths, and dry weights are approximate. Weight will vary based on optional equipment added to the above base weight.

CHASSIS



CHASSIS

+ Spartan® K3 Tag Axle Chassis

HORSE POWER

605_{HP}

Cummins X15 Diesel Engine

FUEL TANK

175_{GAL}

LENGTH

45_{FT}

TORQUE

1,950_{LB/FT}

AXLES

3

Tag Axle Equipped

TIRE SIZE

22.5"

Michelin Brand
Front: 365/70R22.5
Rear & Tag: 315/80R22.5

STEERING WHEEL

Comfort Drive™ Adaptive Steering with Power Column and Adjustable Control

SAFETY

- + OnGuard™ Collision Mitigation Adaptive Cruise System with Adjustable Following Distance Control
- + Electronic Stability Control
- + Mobileye® Lane Tracking
- + Blind Spot Detection
- + Back-Up Alarm

TRANSMISSION

Allison 4000MH

CHASSIS SPECIFICATIONS

GLOSSARY

- + **GAWR:** Gross Axle Weight Rating is the maximum permissible weight for an axle.
- + **GVWR:** Gross Vehicle Weight Rating is the maximum permissible weight for a fully loaded motor coach.
- + **GCWR:** Gross Combination Weight Rating is the value specified by the manufacturer of the vehicle as the maximum allowable loaded weight of this motor coach and any towed trailer or towed vehicle.
- + **UVW:** Unloaded Vehicle Weight is the weight of this motor coach as built at the factory with full fuel, engine oil, and coolants. Does not include cargo, fresh water, propane gas, or dealer-installed accessories.
- + **NCC:** Net Carrying Capacity is the maximum weight of all occupants, including the driver, personal belongings, food, fresh water, waste water, propane gas, tools, tongue weight of towed vehicle, dealer-installed accessories, etc., that can be carried by the motor coach.
- + Specifications supplied by the chassis manufacturer.

SPARTAN® CHASSIS												
FLOOR PLAN	ENGINE HP	AXLE RATIO	FUEL CAP.	WHEEL BASE	TIRE SIZE	FRONT GAWR	REAR GAWR	TAG GAWR	GVWR	GCWR	APP. UVW	APP. NCC
4531	605	4.3	175	292+TAG	22.5"	20000 lb.	20000 lb.	14000 lb.	54000 lb.	74000 lb.	49900 lb.	4100 lb.
4540	605	4.3	175	292+TAG	22.5"	20000 lb.	20000 lb.	14000 lb.	54000 lb.	74000 lb.	49900 lb.	4100 lb.
4596	605	4.3	175	292+TAG	22.5"	20000 lb.	20000 lb.	14000 lb.	54000 lb.	74000 lb.	50000 lb.	4000 lb.

The content in our literature depicts and describes products that are subject to change. For the most recent images and information, please visit NewmarCorp.com. Lengths, heights, widths, and dry weights are approximate. Weight will vary based on optional equipment added to the above base weight.

STANDARD FEATURES & OPTIONS

EXTERIOR FEATURES

- Exterior Full-Paint Masterpiece Finish™ With Clearcoat and Cut and Buff
- Automatic Entrance Door Step
- Mud Flaps
- Undercoating
- Entrance Door Assist Handle
- Rear Protective Tow Guard with Stainless Newmar Name Cutout
- Rear Hitch for Towing Car
- Dual-Latched Entrance Door with Power Flush Stepwell Cover
- Holding Tank Levels Displayed in Exterior Water Works Compartment
- Convex Chrome Exterior Mirrors with Defrost, Remote Control, Turn Signal Indicators and Side-View Cameras
- Stainless Steel Exterior Trim Pieces and Entrance Door Kick Panel
- Hydraulic Leveling Jacks
- Power Door Lift for Engine Access
- Power Pass-Through Storage Trays with Access from Either Side with One Storage Shelf per Tray
- Stainless Steel Trim Kit for Exterior Compartment Doors
- Front Cap Beta Fusion Protection
- Ajar Warning for Generator Slide, Baggage Doors, Entry Door, Engine Door, and Escape Door
- Self-Latching Soft-Close Baggage Doors
- Power Washer with 50' Hose Reel Connected to Hot Water Line
- Push-Button Release Baggage Door, Keyless Entrance Door with Touchpad and Doorbell
- Passive Entry System

OPTIONS

- Onyx Package with Black Aluminum Powder Coat Trim Kit for Exterior Compartment Doors
- Artisan Series Custom Paint Process Exterior Graphics
- Flag Pole Bracket
- Stainless Steel Trim Kit for Exterior Compartment Doors
- Non-Powered Storage Trays (Size and Placement are Floor Plan Specific)
- Powered Storage Trays (Size and Placement are Floor Plan Specific)
- Windshield Temporary Protection - For Transport Only

CONSTRUCTION FEATURES

- Foam Insulation 5/8" Laminated in Sidewalls and Ceiling
- 16" On-Center Aluminum Frame Sidewalls and Roof Construction
- Gelcoated Fiberglass Exterior Sidewalls, Front and Rear Caps
- Slideout Automatic Lock Arms On Non Hydraulic - Paddle Style
- Fiberglass Roof and Integrated Gutter Rail
- Polar Pak R19 Batten Insulation in Roof
- Egress Door with Ladder System

WINDOWS, AWNINGS, & VENTS

- Window Power on Driver Side
- Girard® Entrance Door Awning with LED Lights, Slideout Covers and Power Armless Window Awnings
- Girard® Dual Nova Side Awnings with Wind Sensor, Remote Control and LED Lights
- Fan-Tastic® Vent with Rain Sensor with Hardwood Louver Cover in Kitchen, Bath and Enclosed Stool Room
- One-Piece Tinted Windshield
- Frameless Double-Pane Tinted Safety-Glass Windows
- Kitchen Window

CHASSIS FEATURES

- Anti-Lock Braking System
- Back-Up Alarm
- Cruise Control
- Recessed Fuel Fills, with Cross Over to Fill from Either Side
- Electronic Chassis Information Center in Dash
- Power Tilt/Telescope Steering Wheel with VIP Smart Wheel
- Air Leveling Control System
- Aluminum Alcoa Dura-Bright Wheels
- Tire Pressures Displayed on Glass Dash
- Spartan® K3, Tag Axle, 605 HP, 45' King Aire
- Comfort Drive™ Adaptive Steering with Power Column and Adjustable Control
- Electronic Stability Control
- Cummins® Connected Diagnostic System
- Auxiliary Air Brake Kit for Towed Vehicles
- Battery Disconnect for Chassis Battery
- OnGuard™ Collision Mitigation Adaptive Cruise System with Adjustable Following Distance Control
- Glass Dash Instrument Panel
- Mobileye® Lane Tracking
- Automatic On/Off Headlights
- Push Button Engine Start
- Automatic High Beam Headlights
- Mobileye® Displayed on Digital Dash Via Xite Radio Interface on Spartan® Chassis
- Mobileye® Speed Limit Sign Recognition and Dash Display
- Blind Spot Detection
- Driver Seat Memory Settings
- Heated Steering Wheel
- Valid Digital Glare Free Dash on Spartan® Chassis
- Tank Dump Side Tilt Mode
- Nine Function Steering Wheel with Switch Pod in Center on Spartan® Chassis

STANDARD FEATURES & OPTIONS (CONTINUED)

Valor Generation 3 TPMS System on Spartan® Chassis
Auto Rain Sense Wipers
Seat Belt Warning Indicator in Dash Display
Cockpit Seat Occupancy Sensors
Cockpit Seat Belts Latch Sensors
Remote Tank Dump for Grey Tank

OPTIONS
<input type="checkbox"/> Curt Spectrum Integrated Brake Control on Spartan® Chassis Only
<input type="checkbox"/> Spartan® K3, Tag Axle, 605HP, 45' King Aire, Onyx Package
<input type="checkbox"/> Spartan® K3, Tag Axle, 605HP, 45' King Aire, California Compliance
<input type="checkbox"/> Spartan® K3, Tag Axle, 605HP, 45' King Aire, Onyx Package, California Compliance

AIR CONDITIONING & HEATING

Dual Zone Dash HVAC
Three 15K Heat Pump Air Conditioners with Remote Control Thermostat
Air Conditioning Drainage System for Roof
Driver and Passenger Dash Overhead Ventilation System
Oasis 85K BTU Dual Loop Heat with Continuous Hot Water
Electric Radiant Heat Installed Below Floor Tile

ELECTRICAL FEATURES

Exterior Security Lights, One Installed on Each Side
Interior Courtesy Lights
Emergency Engine Start Switch
Cable TV Connection
Midship Side Turn Signals
Engine Block Heater
10W Solar Panel to Charge Chassis Battery
Power Rewind Reel with 50' Cord
Recessed LED Lights in Ceiling and Underneath Overhead Cabinets
Automatic Generator Start on Low Battery or Temperature Setting
Multiplex Electrical Wiring System
Slideout Switch Manually Operated Hold to Run
Battery Disconnect Switch for House Battery
Accent Lights in Feature Ceiling, Lambrequins, Kitchen, Bed Base, Fascia Trim and Under Dash
12.5 kW Cummins Onan® Diesel Generator with Auto Changeover on Hydraulic Slideout Tray
Exterior LED Accent Lights Below Perimeter of Unit
Four 640 AHR Lithionics® Lithium Ion Battery Power Packs (UL Approved)
Two 3000W Victron Inverters
LED Lights in Exterior Storage Compartments on Automatic Switches
LED Exterior Accent Lights Above Rear Tow Guard
LED Docking Lights with Stainless Steel Trim
Rear Hitch Docking Light
LED Lights Installed Under Door-Side Slideouts

USB Outlet High Power at Dinette and Bedroom Night Stand
Wireless Charging Mat Built into Dash and Nightstand Countertops
LED Lights in Pullout Pantry, Kitchen and Bathroom Base Cabinets
Vanity Mirror Backlight in Floor Plans with Trough Sinks
50 Amp Electrical Service with Flexible Cord and Automatic Transfer Switch
Solar Prep with 6 Gauge Wire Ran from Roof to House Battery Compartment (N/A with L020 Option)
Multiplex Lighting Control System
USB Outlet at Dash for Driver Use
110V/USB Recept at Head of Each Bunk Area (Floor Plan Specific)
Spare Fuses in Chassis Fuse Panel
Spare Fuses in House Fuse Panel
Wireless Charging Mat Built into Passenger Console
Dimmable Reading Lights at Head of Bed Feature Adjustable Arm
LED Lights Installed Under Off-Door Side Slideouts
Pop Up Recepts Integrated into Kitchen Countertop Ledge
10.1" Multiplex Monitor System in Center of Coach with Interior Lighting and HVAC Controls
Dash Radio, Cameras and Monitors to Power Up from Both House Batteries and Ignition

Newmar App
OPTIONS
<input type="checkbox"/> 30 Amp/120V Cord Connection for Stacker Trailer
<input type="checkbox"/> Four Flexible 120W Solar Panels on Roof
<input type="checkbox"/> Roof-Mounted Spot Light

PLUMBING & BATH FEATURES

Power Reel for Water Hose
Demand Water System
Assist Handle - Each Shower
Fold-Down Shower Seat (Floor Plan Specific)
Auto Fill for Fresh Water Tank
ManaBloc® Plumbing System
Sewage and Grey Holding Tank Rinse
Fully-Tiled Shower Walls and Floor
Dometic® Concerto Electric Flush or Macerator China Bowl Stool (Varies per Floor Plan)
Exterior Convenience Station - Hot/Cold Water and Towel Dispenser
UV/Carbon Filter Drinking Water Purifier with Dedicated Kitchen Faucet
Dump Valves Power for Holding Tanks
RV Sanicon Turbo System
Aqua Miser® Shower System
Bladder Tank for Water Pump System

INTERIOR FEATURES

Interior Assist Handle at Main Entry Door
Auto Motion Power Window Shades and Lambrequins

STANDARD FEATURES & OPTIONS (CONTINUED)

Auto Motion Power Shade at Windshield and Power Shades at Driver and Passenger Side Windows

Safe Located in Wardrobe

Tile Floor in Kitchen, Bathroom, Bedroom and Living Areas

Designer Feature Ceiling with Cathedral Ceiling and Added Height - Rear Bath Models

Handle Flush on Swinging Bath Doors

Wastebasket in Kitchen Base Under Sink

Maximized Shoe Storage Shelves Recessed in Rear of Wardrobe (Floor Plan Specific)

Leather Window Blind System in Bedroom

Fitted Down Alternative Bedspread and Accent Pillows

OPTIONS

- Pet Package: Includes Newmar-Branded Food and Water Dishes, Exterior Leash Hook and Retractable Pet Gate

CABINETS & FURNITURE

Lifts on Bed Top

Molded Silverware Divider Tray

Cedar Paneling in Bedroom Wardrobe (Floor Plan Specific)

Pullout Pantry Shelves, See Floor Plans for Availability

Concealed Cabinet Door Hinges

Passenger Seat Workstation

Super-Polished Quartz Countertop with Trough Sinks in Master Bathroom

Dovetail Drawers with Self-Closing Full Extension Ball Bearing Guides

Air Mattress

Super-Polished Quartz Countertop in Kitchen with Sink

Heated and Air-Cooled Driver and Passenger Seats with Power-Lumbar, Recline, Footrest and Standard Width Passenger Seat

Extended Rotation Concealed Cabinet Door Hinges for Washer and Dryer

Full-Height Wardrobe Beside Lav (Floor Plan Specific)

Euro Booth Dinette with Two Table Leaves and Two Folding Chairs

Mesh Cell Phone Holder at Each Bunk Bed (Floor Plan Specific)

Soft-Close Cabinet Door Hinges with Dual Magnetic Latches

Driver and Passenger Seats with Massage Feature

Super-Polished Quartz Countertop in Bathroom and Bedroom

European Style Cabinetry

Leather Sofa and Front Seats with Integrated Seat Belts

Power Comfort Lounge Sofa

Visionary V2 Trifold Sleeper Sofa with Memory Foam Mattress

Driver Seat with Vibrator for Haptic Feedback

Large Drawer in Pantry for Small Appliances

OPTIONS

- Combo Desk Dinette with Buffet Table, Two Fixed and Two Folding Chairs (Floor Plan 4531)
- Convertible Dinette with Two Fixed and Two Folding Chairs that Face to Window or Fore/Aft Seating
- 44" Powered Extenda Booth Dinette Replaces Hide-A-Leaf Table (Floor Plan 4531)
- 75" U Dinette with Power Adjustable Table Replaces Hide-A-Leaf Table (Floor Plan 4531)
- Ottoman (Not Available with Theater Seating)
- Overhead Cabinet Above Dinette
- Overhead Cabinet Above Door-Side Sofa
- Overhead Cabinet at Head of Bed
- Overhead Cabinet in Dinette/Living Room Slideout
- Queen-Size Passenger Seat with Standard Features
- Two Recliners with Reading Lights and Lampstand Replace Trifold Sofa, 74" Trifold Sofa Replaces Power Comfort Lounge Sofa (Floor Plan 4596)
- Two Recliners with Reading Lights and Lampstand Replace Trifold Sofa, 68" Trifold Sofa Replaces Comfort Lounge Sofa (Floor Plan 4531)
- 84" Powered Theater Seating with Adjustable Headrests Replaces Trifold on Off-Door Side, 68" Visionary Trifold Sofa Replaces Comfort Lounge Sofa (Floor Plan 4596)
- 84" Powered Theater Seating Replaces Trifold on Off-Door Side, 74" Visionary Trifold Sofa Replaces Comfort Lounge Sofa (Floor Plan 4531)

APPLIANCES & ACCESSORIES

Air Horns

Central Vacuum with Tool Kit

Wolf® All-Electric Induction Cooktop

Viking® Stainless Steel Convection Microwave

2.47 Cu. Ft. Dometic® Freezer on Pullout Tray in Exterior Compartment

19.8 Cu. Ft. Viking® Stainless Steel Refrigerator with French Door and Internal Ice Maker

Fisher & Paykel® Dishwasher with Wood Panel Front

Samsung® Two-Piece Stacked Washer and Dryer, Dryer is 240V

OPTIONS

- Dual-Zone Beverage Center
- Narrow Beverage Refrigerator in Pantry (Holds Six Bottles)
- Wolf® Coffee Maker
- Fireplace in Bedroom
- Dual-Zone Wine Cooler

AUDIO, VIDEO & ACCESSORIES

Satellite Dish Prep on Roof

Bose® Bedroom Speaker

SiriusXM® Radio Capability with Antenna (Does Not Include Monthly Subscription)

STANDARD FEATURES & OPTIONS (CONTINUED)

- Two 19" TV/DVD Skyworth Monitors - One at Each Standard Bunk (Floor Plan Specific)
- Infrared Repeater System to Operate Audio/Video Components
- Harman Infinity Audio Cockpit Sound System
- Internet Connectivity for Remote Access to Motorhome
- 55" Samsung® 4K QLED TV in Living Area
- 50" Samsung® 4K QLED TV in Bedroom
- Cat6 TV Cables
- 43" Samsung® 4K QLED TV in Front Overhead Cabinet
- Exterior Entertainment in Sidewall with 43" Samsung® 4K QLED TV, Stainless Steel Rack in Storage Compartment
- Extra Monitor on Passenger Side
- Xite Dash Radio with Apple CarPlay®, 10" Dual Monitor with Nav-N-Go Navigation System
- Xite HD 360 Camera System with Grid Lines and Tri-View Rear Camera
- Remote Internet Camera Access to Support Live Video Streaming
- Doorbell/Camera System at Entrance Door Connected to Remote App
- Bose® 500 Subwoofer
- Bose® Ultra Soundbar in Living Room
- Everest WiFi System with Aspen Interior Router
- 10 BC Fire Extinguisher, Carbon Monoxide, Smoke Detectors
- Starlink Internet System

- OPTIONS**
- Two Rear Camera Prep for Use with Stacker Trailer
 - Security System
 - Winegard® Rayzar Automatic Digital TV Antenna
 - Starlink Performance Internet System
 - Universal Toll Module

OUR PARTNERS

THE NEWMAR DIFFERENCE™

The Newmar Difference™ begins with suppliers dedicated to providing our customers with unrivaled quality, comfort, and support. We only work with suppliers that are dedicated to providing our customers with unrivaled innovation, comfort, and reliability. It's all so you can experience best-in-class performance from names you can trust. At Newmar, that's our difference, and our promise.



BASF

The Coatings division of BASF is a global expert in the development and production of innovative and sustainable OEM and refinish coatings. Coatings by BASF—solutions beyond your imagination.



Freightliner® Custom Chassis

Freightliner® Custom Chassis are renowned for their exceptional ride, excellent maneuverability, advanced technology, and nationwide 24/7 factory-direct support.



Spartan® RV Chassis

An American company with over 40 years of experience in designing and manufacturing the premier motorhome chassis, Spartan® delivers superior performance, exceptional safety ratings, and industry-leading technology.



Industrial Finishes

Industrial Finishes has supported RV manufacturers for over four decades, offering paint products that deliver uncompromising quality and provide your coach with a true Masterpiece™ finish.



RiverPark

From Samsung® 4K TVs and Xite Infotainment systems to Bose® soundbars and JBL and Infinity premium audio systems, RiverPark helps ensure you enjoy the ultimate audio-visual technology in your Newmar coach.

THE NEWMAR CUSTOMER EXPERIENCE

The Newmar Difference™ goes beyond our industry-leading motor coaches to provide you with an unrivaled ownership experience.



Crafted with Purpose

Every Newmar is crafted one at a time by folks who have spent an average of eight years building them. Each coach we assemble must undergo more than 1,000 tests and checks before ever leaving our factory.



More Than a Number

Meet fellow owners through the Newmar Kountry Klub, a top social club for RV travelers that hosts rallies and other special events throughout the U.S. and Canada.



The Highest Standards

We view our dealership network in terms of quality, not quantity. Each of our dealers acts as a partner in our shared mission to exceed your highest of expectations, for an ownership experience that's second to none from day one.



Seamless Service

When you join the Newmar family, we pair you with a dedicated service specialist with expert knowledge of your exact coach. Our service specialists guarantee dealer warranty authorizations within four business hours and ship all in-stock parts the same day, free of charge.



Built Around You

As a Newmar owner, you'll find resources specific to your coach through Newgle, an easy-to-use knowledge base that houses everything from user guides to technical support documents.



Without Compromise

All models include a one-year/unlimited mileage limited warranty and a five-year, non-transferable structural warranty that covers your coach's superstructure in the event it fails to perform. Ask your Newmar dealer for more details.

CONTACT

Newmar Corporation
1952 Cheyenne St.
Nappanee, IN 46550

+ Phone: 574-773-7791
+ Fax: 574-773-2895
+ NewmarCorp.com

