



2027 GRAND STAR



LUXURIOUS. INNOVATIVE. REFINED.

WHY GRAND STAR

Go where you've always imagined in the 2027 Grand Star, the most approachable Super Class C coach on the market. Built on the Freightliner® S2RV chassis with the shortest floor plan available, it's easy to drive, maneuver, and store. Newmar's legendary quality shows throughout, with durable craftsmanship designed to last. With flexible floor plans—including bunk models, bath-and-a-half layouts with king-size beds, and a cab-over bunk in every model—the Grand Star is ready for every kind of journey.

NEW FEATURES FOR 2027

- + Dovetail Cabinetry Drawers Now Standard
- + Driver and Passenger Seats Now Swivel
- + LED Lighting in Basement Compartments
- + Telescoping Bunk Ladder for Cab-Over Bunk
- + Starlink Internet System Now Standard (Subscription Required)
- + Pet Package: Includes Newmar-Branded Splash-Proof Water and Food Bowls and Exterior Leash Hook (Optional)



FLOOR PLANS

3

- + Length 34-39'
- + Bunk Floor Plan Available

EXTERIORS

6

- + Onyx Package Available

INTERIOR DÉCORS

3

CUSTOMIZATIONS

- + **Customization Options Include:** paint colors, fabrics, flooring
- + **Kitchen and Bath Customizations:** backsplashes, sinks, plumbing fixtures, and cabinet hardware
- + **Electrical Customizations:** interior and exterior outlet placement and custom wiring runs based on preference

WHY NEWMAR

Every Newmar coach is crafted with purpose, tailored to you, and backed by unwavering support. This relentless pursuit of excellence shapes everything we do. From the precision of our engineering to the responsiveness of our service. From the innovation in our designs to the personalization that honors our customer’s vision.

PRODUCT FEATURES

Residential Build

At Newmar, we craft every coach with the same proven techniques used in quality residential construction. Strong, layered sidewalls pair with precisely placed C-channel aluminum studs set 16 inches on-center, while a robust truss-built roof protects your investment for the long haul. Inside, premium flooring adds stability and comfort, and durable aluminum-framed windows are built to stand the test of time, coming together to deliver a coach made to last.

Masterpiece Finish™

Every Newmar coach is finished with our Full-Paint Masterpiece Finish™, an industry-exclusive process crafted with premium BASF paints and applied entirely within our own 45,000-square-foot paint facility by skilled Newmar artisans. We were the first RV manufacturer to offer full-body paint across every model we build—a testament to our unwavering commitment to quality and our belief that your motorhome should be as beautiful on the outside as it is welcoming on the inside.



NEWMAR SERVICE

At Newmar, we deliver a seamless service experience designed to get you back out on the road as soon as possible. It's all about providing you with an uncompromising service experience from the day you take delivery of your new home on wheels.

SERVICE FEATURES

Personal Service Tech

The Newmar Service Center offers personal service technicians and the ability to camp onsite with full hookups, receive in-depth education, use private workstations, visit with other Newmar owners in our lounge, and enjoy convenient laundry facilities along with dedicated pet lounges and a pet park.

NewServ Mobile

With NewServ, our technicians come to you for routine maintenance. Services like appliance fixes, water pump maintenance, and more are available in Southern California, Arizona, and Central Florida. To schedule your appointment, call **800-731-8300**.

Newgle for Product Knowledge

Explore Newgle—our free online knowledge base—packed with information straight from Newmar, as well as our component manufacturers and suppliers.

Dedicated Brand Specialists

Newmar Service Account Managers, otherwise known as Brand Specialists, provide dealer warranty service authorizations within four business hours, and ship all in-stock parts the same day, via free ground shipment. And if a part is out of stock, they'll either pull it from the production floor or order the part from the appropriate supplier immediately.



HARDWOOD CABINETRY OPTIONS

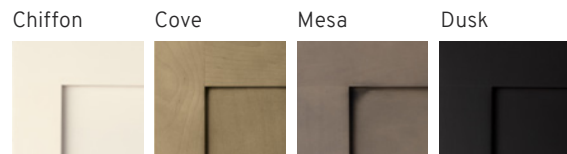
CHIFFON AND MESA TWO-TONE (SHOWN IN IMAGE)



FEATURES

- + Maple Hardwood Cabinet Doors in Suede Finish
- + Available in Four Solid Colors and Three Two-Tone Finishes
- + Concealed Cabinet Door Hinges
- + Soft-Close Cabinet Drawers
- + Dovetail Cabinetry Drawers With Full Extension Ball Bearing Guides

CABINET COLOR OPTIONS



TWO-TONE OPTIONS



INTERIOR DECOR OPTIONS

VISTA (SHOWN IN IMAGES)



Leather Furniture & Ceiling Accent



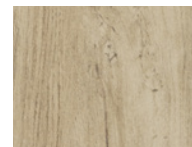
Dinette Chair & Pillows



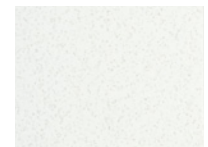
Bedspread & Bedroom Windows



Bed Pillow



Tile Flooring

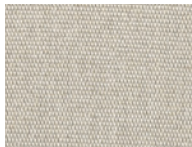


Countertops

STOWE



Leather Furniture & Ceiling Accent



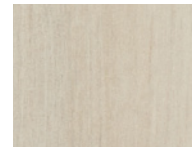
Dinette Chair & Pillows



Bedspread & Bedroom Windows



Bed Pillow

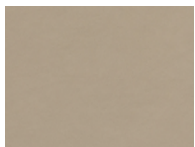


Tile Flooring



Countertops

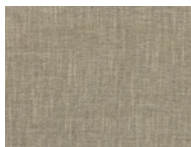
ARLO



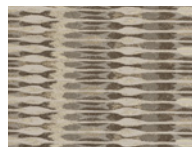
Leather Furniture & Ceiling Accent



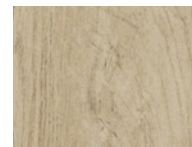
Dinette Chair & Pillows



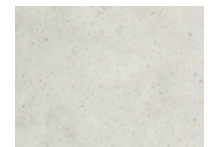
Bedspread & Bedroom Windows



Bed Pillow



Tile Flooring



Countertops

Exterior color and interior décor options may be matched to customer preference, subject to availability. Please see your dealer for details.

EXTERIOR DESIGN OPTIONS

BLUE RELAY

Charcoal Tweed Awning



RED ECHO

Charcoal Tweed Awning



SLATE WHISPER

Charcoal Tweed Awning



ALPINE

Charcoal Tweed Awning



BLANCO

Charcoal Tweed Awning



STEALTH

Charcoal Tweed Awning



FEATURES

- + Industry-Exclusive Full-Paint Masterpiece Finish™ with Clearcoat and Cut and Buff
- + New Exterior Graphics and Colors with Six Color Combinations*

- + Ability to Customize Color Selections
- + Front Cap Diamond Shield Protection
- + Onyx Package Available (Optional)

*New for 2027

Exterior color and interior décor options may be matched to customer preference, subject to availability. Please see your dealer for details.

ONYX EXTERIOR PACKAGE

KEY FEATURES

- + The Onyx Exterior Package replaces standard chrome accents with a sleek, blacked-out finish.
- + Exclusively available on the following coaches: King Aire, Essex, London Aire, Mountain Aire, New Aire, Dutch Star, Summit Aire, Supreme Aire, Super Star, Grand Star and Freedom Aire.
- + Not available on Bay Star, Bay Star Sport, Ventana, Northern Star and Canyon Star.
- + The Onyx Exterior Package is exclusively pre-order only and is not available aftermarket. To request a bold black-out style, see your Newmar dealer prior to purchase.

The Onyx Package includes the following features:

- + Front Cap Accents
- + Rear Cap Accents
- + Entrance Grab Handle
- + Rock Guard
- + Wheels and Center Caps
- + Mirrors
- + Front and Back Logos
- + Baggage Door Trim*

DUTCH STAR FEATURED IN IMAGES

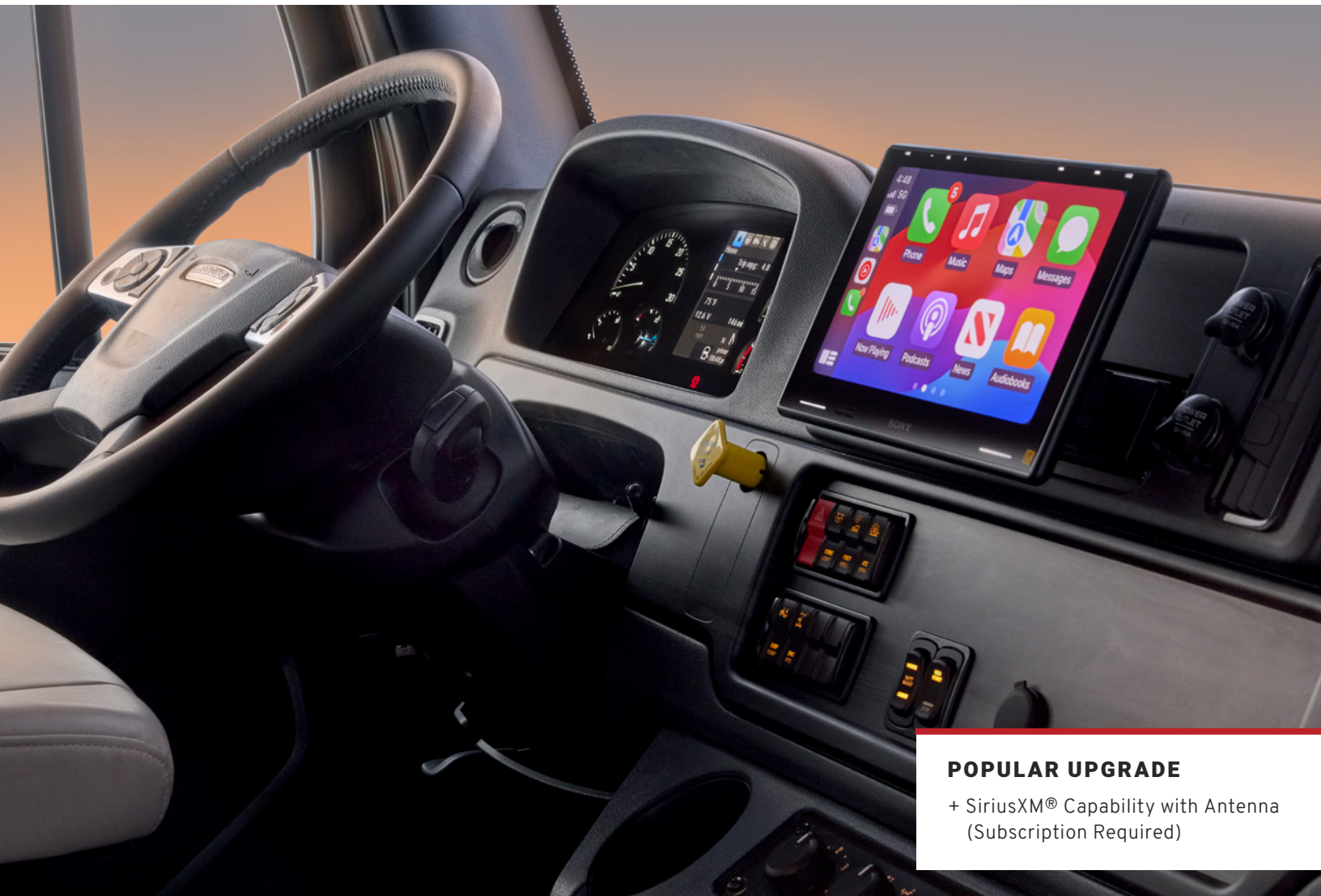


*Baggage door trim is Standard on the King Aire, but optional for other eligible coaches.

COCKPIT

KEY FEATURES

- + Freightliner® S2RV Chassis, 360HP
- + Cab-Over Bunk with Skylight
- + Rear-View Color Monitor System with Audio
- + 10" Sony Dash Radio with Rear Coach Viewing, Apple CarPlay® and Android Auto™
- + Electronic Stability Control



POPULAR UPGRADE

- + SiriusXM® Capability with Antenna (Subscription Required)

CABIN

KEY FEATURES

- + Multiple Seating Configurations Available
- + TV on Televator
- + Maple Cabinetry with Suede Finish
- + Contemporary Woven Material on Slideouts
- + Starlink Internet System (Subscription Required)
- + Pet Package: Includes Newmar-Branded Splash-Proof Food and Water Bowls and Exterior Leash Hook (Optional)*

*New for 2027



POPULAR UPGRADES

- + 74" Powered Theater Seating Instead of Standard Sofa on Door Side, 35" Booth Dinette Instead of 38" Booth Dinette on Off-Door Side

GALLEY & DINETTE

KEY FEATURES

- + Hardwood Cabinet Door and Drawer Fronts*
- + Booth Dinette Sleeper (Other Dinette Options Available)
- + Drawers Underneath Dinette Booth Seats
- + Spacious Kitchen with Expandable Countertop
- + All-Electric, Induction Cooktop (Optional)
- + Microwave Convection Oven with Air Fryer
- + 18 Cu. Ft. Whirlpool® Residential Refrigerator
- + Dovetail Cabinetry Drawers

*New for 2027



POPULAR UPGRADE

- + Two-Burner Induction Cooktop Replaces Standard Cooktop

BEDROOM

KEY FEATURES

- + King-Size Bed
- + Large 30" x 72" Bunks with Option to Convert to Dedicated Office with Built In Desk, Chair and Window (Floor Plan 3940)
- + Plush Pillow Top Mattress
- + Fitted Bedspread and Accent Pillow
- + Wardrobe with TV



POPULAR UPGRADE

- + Dedicated Workplace with Desk and Chair Replaces Midship Bunks (Floor Plan 3940)

BATHROOM

KEY FEATURES

- + Full Bath and Bath and a Half Floor Plans Available
- + 40" x 30" Shower with Skylight
- + Splendide® Washer and Dryer (Optional)
- + Midship Half Bath



POPULAR UPGRADE

- + Splendide® Washer and Dryer

EXTERIOR FEATURES

KEY FEATURES

- + Exterior Full-Paint Masterpiece Finish™ with Clearcoat and Cut and Buff
- + Exterior Entertainment Center with 43" Samsung® 4K LED TV and Soundbar
- + Carefree Travel'R Power Side Awning with Alumguard and Strip Lighting
- + Automatic Entry Door Step
- + Entrance Door Assist Handle
- + Hydraulic Leveling Jacks Smart Level with Bluetooth Compatible Touchpad
- + Rear Protective Tow Guard with Stainless Steel Newmar Letters
- + Onyx Package Available (Optional)

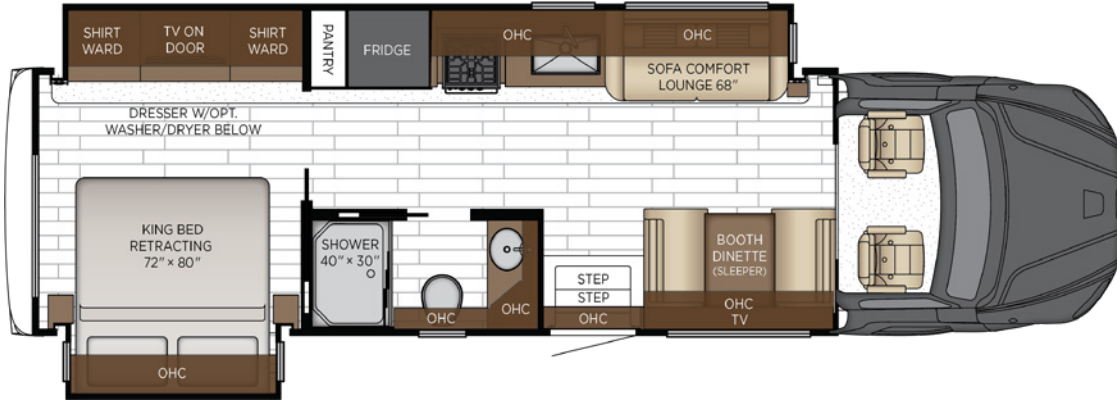


POPULAR UPGRADE

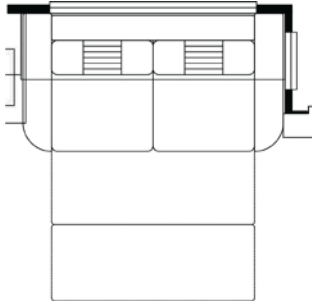
- + Onyx Package
- + Flag Pole Bracket

3444 FLOOR PLAN

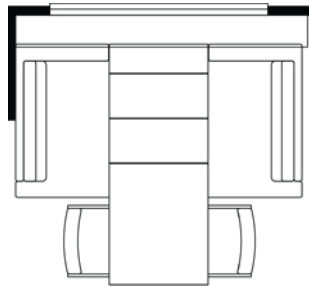
STANDARD



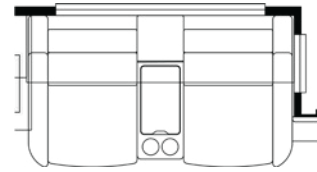
OPTIONS



Trifold Sofa



Theater Seating



Theater Seating

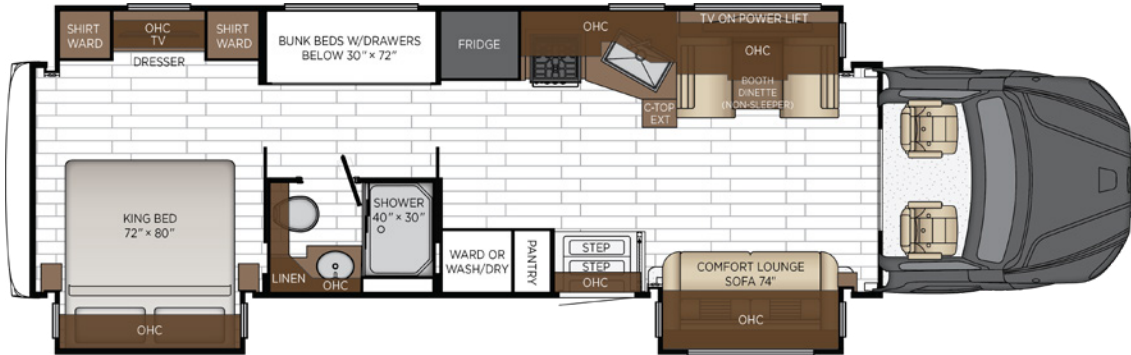
PERFECT FOR

- + Those Desiring Maneuverability
- + National Park Enthusiasts, Stadium Tailgaters, or Those Visiting Space-Constrained Locations
- + Those Seeking Extra Storage and Hosting Flexible with the Cab-Over Bunk

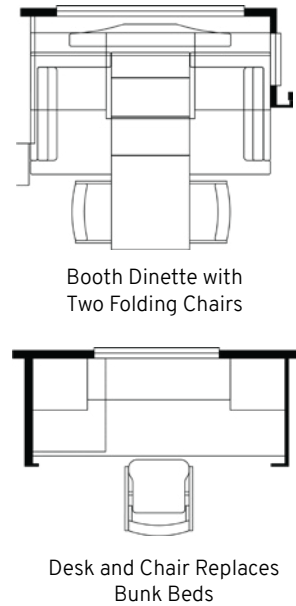
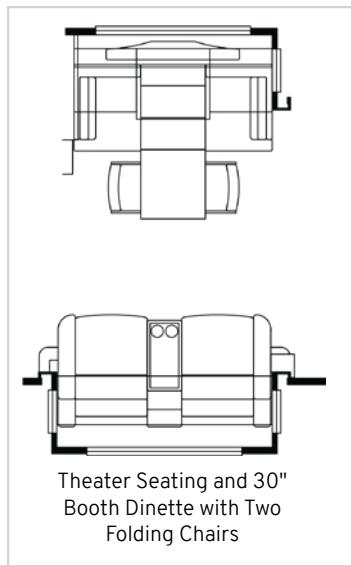
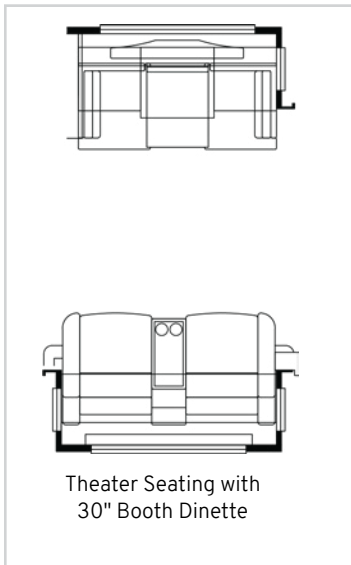
Length	34' 11"	Interior Height	83"	Furnace	35,000 BTU
Width	101.5"	Grey Tank	52 gal.	Sleeps	2-7 People
App. Overall Height	13'	Sewage Tank	52 gal.		
Interior Width	95.5"	Water Tank	100 gal.		

3940 FLOOR PLAN

STANDARD



OPTIONS



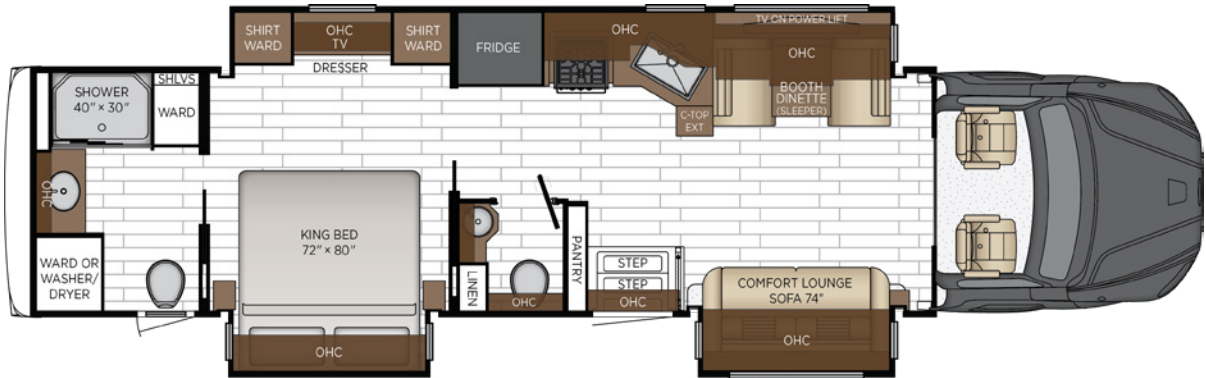
PERFECT FOR

- + Families Seeking Comfort, Sophistication and Private Space
- + National Park Enthusiasts, Stadium Tailgaters, or Those Visiting Space-Constrained Locations
- + Those Seeking a Dedicated Space to Work From the Road
- + Those Seeking Extra Storage and Hosting Flexible with the Cab-Over Bunk

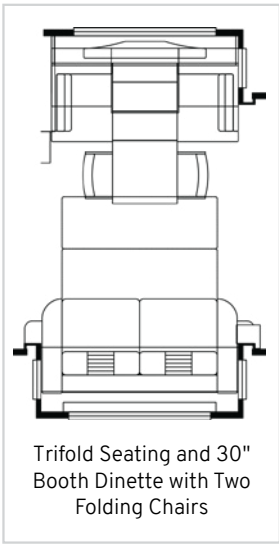
Length	39' 11"	Interior Height	83"	Furnace	35,000 BTU
Width	101.5"	Grey Tank	100 gal.	Sleeps	2-8 People
App. Overall Height	13'	Sewage Tank	45 gal.		
Interior Width	95.5"	Water Tank	150 gal.		

3948 FLOOR PLAN

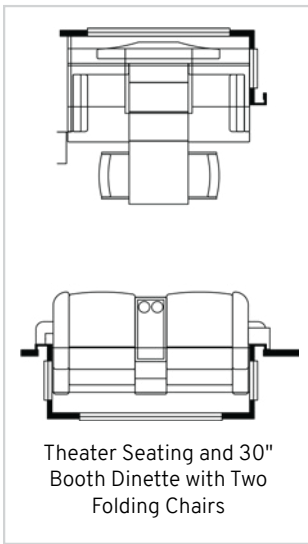
STANDARD



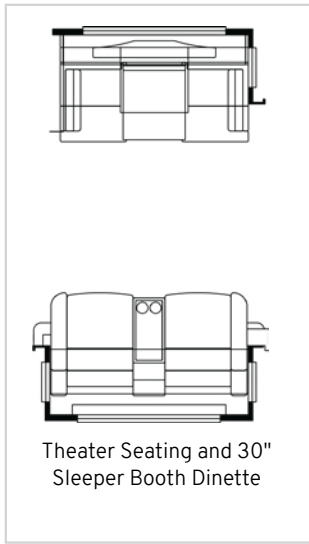
OPTIONS



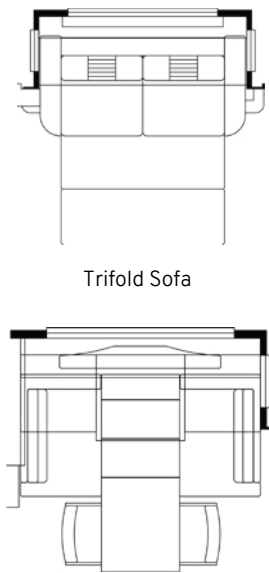
Trifold Seating and 30" Booth Dinette with Two Folding Chairs



Theater Seating and 30" Booth Dinette with Two Folding Chairs

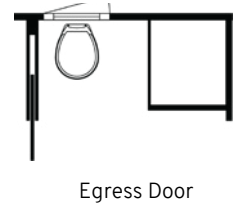


Theater Seating and 30" Sleeper Booth Dinette



Trifold Sofa

Booth Dinette with Two Folding Chairs



Egress Door

PERFECT FOR

- + Full-Times, Most-Timers and Extended Stays
- + Those Desiring a Private Retreat
- + Those Seeking Extra Storage and Hosting Flexible with the Cab-Over Bunk

Length	39' 11"	Interior Height	83"	Furnace	35,000 BTU
Width	101.5"	Grey Tank	100 gal.	Sleeps	2-8 People
App. Overall Height	13'	Sewage Tank	45 gal.		
Interior Width	95.5"	Water Tank	150 gal.		

FLOOR PLAN SPECIFICATIONS

FLOOR PLAN KEY FEATURES

+ 3444:

- **Perfect For:** Those Desiring Maneuverability, National Park Enthusiasts, Tailgaters, or Those Visiting Space-Constrained Locations, Those Seeking Extra Storage and Hosting Flexibility with the Cab-Over Bunk
- **Key Features:** Maneuverability, Shortest Floor Plan Available, King-Size Bed, Cab-Over Bunk Included, Optional Washer and Dryer, Easy to Store

+ 3940:

- **Perfect For:** Families Seeking Comfort, Sophistication and Private Space, National Park Enthusiasts, Tailgaters, or Those Visiting Space-Constrained Locations, Those Seeking a Dedicated Space to Work From the Road, Those Seeking Extra Storage and Hosting Flexibility with the Cab-Over Bunk
- **Key Features:** Family-Focused Layout Featuring Bunk Beds or Private Workspace, King Bedroom, Midship Bath, Cab-Over Bunk

+ 3948:

- **Perfect For:** Full-Timers, Most-Timers and Extended Stays, Those Desiring a Private Retreat, Those Seeking Extra Storage and Hosting Flexibility with the Cab-Over Bunk
- **Key Features:** Open and Inviting Kitchen and Living Area, King Bed, Rear Full Bathroom with Generous Shower, Midship Bath, Cab-Over Bunk, Optional Washer and Dryer

FLOOR PLAN SPECIFICATIONS										
FLOOR PLAN	LENGTH	WIDTH	APP. OVERALL HEIGHT	INTERIOR WIDTH	INTERIOR HEIGHT	GREY TANK	SEWAGE TANK	WATER TANK	FURNACE	SLEEPS
3444	34' 11"	101.5"	13'	95.5"	83"	52 gal.	52 gal.	100 gal.	35,000 BTU	2-7
3940	39' 11"	101.5"	13'	95.5"	83"	100 gal.	45 gal.	150 gal.	35,000 BTU	2-8
3948	39' 11"	101.5"	13'	95.5"	83"	100 gal.	45 gal.	150 gal.	35,000 BTU	2-7

The content in our literature depicts and describes products that are subject to change. For the most recent images and information, please visit NewmarCorp.com. Lengths, heights, widths, and dry weights are approximate. Weight will vary based on optional equipment added to the above base weight.

CHASSIS



CHASSIS

+ Freightliner® S2RV Chassis, 360 HP

HORSE POWER

360_{HP}

Cummins B6.7 Diesel Engine

FUEL TANK

100_{GAL}

LENGTH

34-39_{FT}

TORQUE

800_{LB/FT}

AXLES

2

TIRE SIZE

22.5"

Michelin Brand
295/75R 16-Ply

STEERING WHEEL

Tilt Steering Wheel

SAFETY

- + Anti-Lock Braking System
- + Cruise Control
- + Electronic Stability Control

TRANSMISSION

Allison 3000MH

CHASSIS SPECIFICATIONS

GLOSSARY

- + **GAWR:** Gross Axle Weight Rating is the maximum permissible weight for an axle.
- + **GVWR:** Gross Vehicle Weight Rating is the maximum permissible weight for a fully loaded motor coach.
- + **GCWR:** Gross Combination Weight Rating is the value specified by the manufacturer of the vehicle as the maximum allowable loaded weight of this motor coach and any towed trailer or towed vehicle.
- + **UVW:** Unloaded Vehicle Weight is the weight of this motor coach as built at the factory with full fuel, engine oil, and coolants. Does not include cargo, fresh water, propane gas, or dealer-installed accessories.
- + **NCC:** Net Carrying Capacity is the maximum weight of all occupants, including the driver, personal belongings, food, fresh water, waste water, propane gas, tools, tongue weight of towed vehicle, dealer-installed accessories, etc., that can be carried by the motor coach.
- + Specifications supplied by the chassis manufacturer.

FREIGHTLINER® CUSTOM CHASSIS												
FLOOR PLAN	ENGINE HP	AXLE RATIO	FUEL CAP.	WHEEL BASE	TIRE SIZE	FRONT GAWR	REAR GAWR	TAG GAWR	GVWR	GCWR	APP. UVW	APP. NCC
3444	360	4.78	100	238	22.5"	12200 lb.	23000 lb.	0	35200 lb.	47200 lb.	25500 lb.	10200 lb.
3940	360	4.78	100	279	22.5"	12200 lb.	23000 lb.	0	35200 lb.	47200 lb.	28000 lb.	7200 lb.
3948	360	4.78	100	279	22.5"	12200 lb.	23000 lb.	0	35200 lb.	47200 lb.	28000 lb.	7200 lb.

The content in our literature depicts and describes products that are subject to change. For the most recent images and information, please visit NewmarCorp.com. Lengths, heights, widths, and dry weights are approximate. Weight will vary based on optional equipment added to the above base weight.

STANDARD FEATURES & OPTIONS

EXTERIOR FEATURES

- Exterior Full-Paint Masterpiece Finish™ with Clearcoat and Cut and Buff
- Entrance Door Assist Handle
- Automatic Entry Door Step
- Power/Heated Exterior Mirrors Plus a Convex Lower Spot Mirror
- Front Cap Diamond Shield Protection
- Hydraulic Leveling Jacks Smart Level with Bluetooth Compatible Touchpad
- Mud Flaps
- Rear Hitch for Towing Car
- Rear Protective Tow Guard with Stainless Newmar Letters
- Undercoating

OPTIONS

- Flag Pole Bracket

CONSTRUCTION FEATURES

- 16" On-Center Aluminum Frame Sidewalls and Roof Construction
- Foam Insulation 5/8" Laminated in Sidewalls and Ceiling
- Gelcoated Fiberglass Exterior Sidewalls, Front and Rear Caps
- One Piece Molded Fiberglass Roof
- Polar Pak R19 Batten Insulation in Roof
- Electric Slideout with Automatic Locking Arms
- Egress Door with Ladder System (Floor Plan Specific)
- HWH Flat Floor Slideout

WINDOWS, AWNINGS, & VENTS

- Carefree Travel'R Power Side Awning with Alumguard and Strip Lighting
- Fan-Tastic® Vent with Rain Sensor in Kitchen and Bathroom
- Rear Window in Bedroom (Floor Plan 3444)
- Skylight Above Shower
- Slideout Covers
- Bunk Windows (Floor Plan 3940)
- Frameless Double-Pane Tinted Safety-Glass Windows

CHASSIS FEATURES

- Allison 6-Speed 3000 MH Transmission
- Anti-Lock Braking System
- Cruise Control
- Electronic Stability Control
- S2RV Freightliner® Custom Chassis, 360 HP
- Tilt Steering Wheel
- Aluminum Wheels

OPTIONS

- S2RV Freightliner® Custom Chassis, 360 HP, California Compliance
- S2RV Freightliner® Custom Chassis, 360 HP, Onyx Package
- S2RV Freightliner® Custom Chassis, 360 HP, Onyx Package, California Compliance

AIR CONDITIONING & HEATING

- 15K BTU Heat Pump Air Conditioner
- Dash Heater and Air Conditioner
- Propane Gas Furnace with Ducted Heat

ELECTRICAL FEATURES

- Automatic Generator Start on Low Battery or Temperature Setting
- Battery Disconnect Switch for House Battery
- Cable TV Connection
- Dash Radio, Cameras and Monitors to Power Up from Both House Batteries and Ignition
- Daytime Running Lights
- Drain Lift Pump (Floor Plan Specific)
- 50 Amp Electrical Service with Flexible Cord and Automatic Transfer Switch
- Energy Management System
- Four 6V AGM House Batteries
- 2000W Tru Sine Inverter with CPAP Prep
- LED Light on Awning
- Lights in Wardrobes
- Multiplex Lighting Control System
- 10.1" Multiplex Monitor System in Center of Coach with Interior Lighting and HVAC Controls
- Newmar App
- 8.0 kW Cummins Onan® Diesel Quiet Series Generator
- Power Rewind Reel with 33' Cord
- Slideout Switch Manually Operated Hold to Run
- Solar Prep with 6 Gauge Wire Ran from Roof to First Storage Compartment
- 10W Solar Panel to Charge Chassis Battery
- Transfer Switch with Surge Protector
- USB Outlet at Dash for Driver and Passenger Use

OPTIONS

- Four 120W Flexible Solar Panels on Roof

PLUMBING & BATH FEATURES

- Demand Water System
- Exterior Shower Located on Off-Door Side
- Sewage Holding Tank Rinse
- Dometic® 310 China Bowl or Macerator China Bowl Stool (Floor Plan Specific)
- Systems Monitor Panel
- Water Filter for Entire Unit
- Water Heater Bypass System

INTERIOR FEATURES

- Auto Motion Manual Double Roller Shades on Windows Behind Driver and Passenger Area

STANDARD FEATURES & OPTIONS (CONTINUED)

- Fitted Bedspread and Accent Pillow
- Interior Passage Doors Inlaid Six Panel Design
- Interior Assist Handle at Main Entry Door
- Padded Vinyl Ceiling Panels
- Roller Shades Below Overhead Bunk
- Shoe Storage Located in Entrance Door Step Compartment
- Tile Floor in Kitchen, Bathroom, Bedroom and Living Areas
- Woven Material on Slideout Floors

OPTIONS

- Pet Package: Includes Newmar-Branded Food and Splash-Proof Water Pet Bowls and Exterior Leash Hook (Large and Small Pet Options)

CABINETS & FURNITURE

- Bed Base with Power Incline Retract and Hinged Mattress (Floor Plan 3444)
- Hardwood Cabinet Door and Drawer Fronts
- Concealed Cabinet Door Hinges
- Soft-Close Cabinet Drawers
- Dovetail Cabinetry Drawers
- Polished Solid-Surface Countertop in Kitchen, Undermounted Sink and Sink Covers
- Solid-Surface Countertop in Bathroom and Bedroom
- Swivel Driver and Passenger Seats
- Sleeper Dinette Booth
- Drawers Underneath Dinette Booth Seats
- Lifts on Bed Top
- Plush Pillow Top Mattress
- Silverware Divider Tray
- Pullout Pantry Shelves (See Floor Plans for Availability)

OPTIONS

- 68" Visionary V2 Trifold Sofa with Memory Foam Mattress Replaces Comfort Lounge (Floor Plan 3444)
- 74" Visionary V2 Trifold Sofa with Memory Foam Mattress Replaces Comfort Lounge (Floor Plan 3948)
- Desk and Chair Replaces Midship Bunks to Create Workspace (Floor Plan 3940)
- 68" Powered Theater Seating with Reading Lights Replaces Comfort Lounge on Off-Door Side (Floor Plan 3444)
- 74" Powered Theater Seating Replaces Standard Sofa on Door Side, 35" Booth Dinette Replaces 38" Booth Dinette on Off-Door Side (39' Floor Plans)

APPLIANCES & ACCESSORIES

- 110V Heat Pads for Holding Tanks
- 30" Stainless Steel Convection Microwave with Air Fryer Feature with Three-Burner Recessed Cooktop
- 18 Cu. Ft. Whirlpool® Refrigerator
- Truma AquaGo® Instant Continuous Flow Water Heater

OPTIONS

- All-Electric Induction Cooktop, Two Extra AGM Batteries, Hydro Heat
- All-Electric Induction Cooktop, Lithionics® Lithium Ion 640 AHR Battery System with 3000W Inverter (UL Approved), Hydro Heat
- Two-Burner Induction Cooktop Replaces Standard Cooktop
- Washer and Dryer Prep

AUDIO, VIDEO & ACCESSORIES

- Exterior Entertainment Center with 43" Samsung® 4K LED TV and Soundbar
- 10 BC Fire Extinguisher, Carbon Monoxide, Propane and Smoke Detectors
- High Definition Component Wiring
- Rear View Color Monitor System with Audio
- Satellite Dish Prep on Roof
- 10" Sony Dash Radio with Rear Coach Viewing, Apple CarPlay® and Android Auto™
- Starlink Internet System (Subscription Required)

OPTIONS

- Radio Sirius XM® Capability with Antenna (Subscription Required)
- Starlink Performance Internet System (Subscription Required)
- Everest WiFi System with Aspen Interior Router
- Winegard® Rayzar Automatic Digital TV Antenna

OUR PARTNERS

THE NEWMAR DIFFERENCE™

The Newmar Difference™ begins with suppliers dedicated to providing our customers with unrivaled quality, comfort, and support. We only work with suppliers that are dedicated to providing our customers with unrivaled innovation, comfort, and reliability. It's all so you can experience best-in-class performance from names you can trust. At Newmar, that's our difference, and our promise.



BASF

The Coatings division of BASF is a global expert in the development and production of innovative and sustainable OEM and refinish coatings. Coatings by BASF—solutions beyond your imagination.



Freightliner® Custom Chassis

Freightliner® Custom Chassis are renowned for their exceptional ride, excellent maneuverability, advanced technology, and nationwide 24/7 factory-direct support.



Spartan® RV Chassis

An American company with over 40 years of experience in designing and manufacturing the premier motorhome chassis, Spartan® delivers superior performance, exceptional safety ratings, and industry-leading technology.



Industrial Finishes

Industrial Finishes has supported RV manufacturers for over four decades, offering paint products that deliver uncompromising quality and provide your coach with a true Masterpiece™ finish.



RiverPark

From Samsung® 4K TVs and Xite Infotainment systems to Bose® soundbars and JBL and Infinity premium audio systems, RiverPark helps ensure you enjoy the ultimate audio-visual technology in your Newmar coach.

THE NEWMAR CUSTOMER EXPERIENCE

The Newmar Difference™ goes beyond our industry-leading motor coaches to provide you with an unrivaled ownership experience.



Crafted with Purpose

Every Newmar is crafted one at a time by folks who have spent an average of eight years building them. Each coach we assemble must undergo more than 1,000 tests and checks before ever leaving our factory.



More Than a Number

Meet fellow owners through the Newmar Kountry Klub, a top social club for RV travelers that hosts rallies and other special events throughout the U.S. and Canada.



The Highest Standards

We view our dealership network in terms of quality, not quantity. Each of our dealers acts as a partner in our shared mission to exceed your highest of expectations, for an ownership experience that's second to none from day one.



Seamless Service

When you join the Newmar family, we pair you with a dedicated service specialist with expert knowledge of your exact coach. Our service specialists guarantee dealer warranty authorizations within four business hours and ship all in-stock parts the same day, free of charge.



Built Around You

As a Newmar owner, you'll find resources specific to your coach through Newgle, an easy-to-use knowledge base that houses everything from user guides to technical support documents.



Without Compromise

All models include a one-year/unlimited mileage limited warranty and a five-year, non-transferable structural warranty that covers your coach's superstructure in the event it fails to perform. Ask your Newmar dealer for more details.

CONTACT

Newmar Corporation
1952 Cheyenne St.
Nappanee, IN 46550

+ Phone: 574-773-7791
+ Fax: 574-773-2895
+ NewmarCorp.com

