



2027 ESSEX



EXQUISITE. ELITE. SUPREME.

WHY ESSEX

Discover refined flexibility in the 2027 Essex, where personalized luxury defines every journey and confidence comes standard. An all-new interior blends warm woods, gold finishes, and marbled tile with a wraparound kitchen and diamond-stitched leather seating for effortless comfort and style, while Artisan Series Custom Paint Process exteriors, adaptable interior layouts, pet-friendly options, and standard Starlink Internet ensure the coach reflects your lifestyle. Powering it all is a Lithionics® Lithium-Ion Battery System that goes beyond backup power, quietly and reliably running your air conditioning, appliances, and onboard systems simultaneously, even off-grid, delivering true freedom wherever the road leads.

NEW FEATURES FOR 2027

- + Interior Lifecycle Update on Both Traditional and Contemporary Design Expressions
- + Xite 360 Camera with Recording Functionality Now Standard
- + Upgraded House Theater Sound Quality on Bose® Ultra Soundbar
- + Theater Seating Featuring Adjustable Headrests (Optional)
- + Starlink Internet System Now Standard (Subscription Required)
- + Pet Package: Includes Newmar-Branded Splash-Proof Water and Food Bowls, Exterior Leash Hook and Retractable Pet Gate (Optional)



FLOOR PLANS

4

+ Length 45'

EXTERIORS

8

- + Onyx Package Available
- + Artisan Series Custom Paint Process Available

INTERIOR DÉCORS

4

- + Contemporary and Traditional Design Expressions Available

CUSTOMIZATIONS

- + **Customization Options Include:** paint colors, fabrics, flooring, window sizes, vent options, doors and cabinet fronts
- + **Kitchen and Bath Customizations:** backsplashes, sinks, plumbing fixtures, and cabinet hardware
- + **Electrical Customizations:** interior and exterior outlet placement and custom wiring runs based on preference

WHY NEWMAR

Every Newmar coach is crafted with purpose, tailored to you, and backed by unwavering support. This relentless pursuit of excellence shapes everything we do. From the precision of our engineering to the responsiveness of our service. From the innovation in our designs to the personalization that honors our customer’s vision.

PRODUCT FEATURES

STAR Foundation

Your foundation for confidence begins with stability. The exclusive STAR Foundation delivers both strength and serenity through its precisely engineered steel superstructure. Carefully welded to every luxury chassis, you’ll experience a ride that’s both quiet and more stable.

Residential Build

At Newmar, we craft every coach with the same proven techniques used in quality residential construction. Strong, layered sidewalls pair with precisely placed C-channel aluminum studs set 16 inches on-center, while a robust truss-built roof protects your investment for the long haul. Inside, premium flooring adds stability and comfort, and durable aluminum-framed windows are built to stand the test of time, coming together to deliver a coach made to last.

Comfort Drive™

The freedom of the open road deserves control that matches your confidence. Standard on every diesel pusher and luxury model, Comfort Drive™ with Passive Steer technology puts car-like handling at your fingertips—because your journey should be defined by discovery, not compromise.

Masterpiece Finish™

Every Newmar coach is finished with our Full-Paint Masterpiece Finish™, an industry-exclusive process crafted with premium BASF paints and applied entirely within our own 45,000-square-foot paint facility by skilled Newmar artisans. We were the first RV manufacturer to offer full-body paint across every model we build—a testament to our unwavering commitment to quality and our belief that your motorhome should be as beautiful on the outside as it is welcoming on the inside.



NEWMAR SERVICE

At Newmar, we deliver a seamless service experience designed to get you back out on the road as soon as possible. It's all about providing you with an uncompromising service experience from the day you take delivery of your new home on wheels.

SERVICE FEATURES

Personal Service Tech

The Newmar Service Center offers personal service technicians and the ability to camp onsite with full hookups, receive in-depth education, use private workstations, visit with other Newmar owners in our lounge, and enjoy convenient laundry facilities along with dedicated pet lounges and a pet park.

NewServ Mobile

With NewServ, our technicians come to you for routine maintenance. Services like appliance fixes, water pump maintenance, and more are available in Southern California, Arizona, and Central Florida. To schedule your appointment, call **800-731-8300**.

Newgle for Product Knowledge

Explore Newgle—our free online knowledge base—packed with information straight from Newmar, as well as our component manufacturers and suppliers.

Dedicated Brand Specialists

Newmar Service Account Managers, otherwise known as Brand Specialists, provide dealer warranty service authorizations within four business hours, and ship all in-stock parts the same day, via free ground shipment. And if a part is out of stock, they'll either pull it from the production floor or order the part from the appropriate supplier immediately.



HARDWOOD CABINETRY OPTIONS

SABLE (SHOWN IN IMAGE)



FEATURES

- + Maple Hardwood Cabinet Doors in Suede or High Gloss Finish
- + Available in Contemporary and Traditional Styles
- + Available in Five Solid Colors and Four Two-Tone Finishes
- + Concealed Cabinet Door Hinges
- + Soft-Close Cabinet Drawers
- + Dovetail Cabinetry Drawers With Self-Closing, Full Extension Ball Bearing Guides

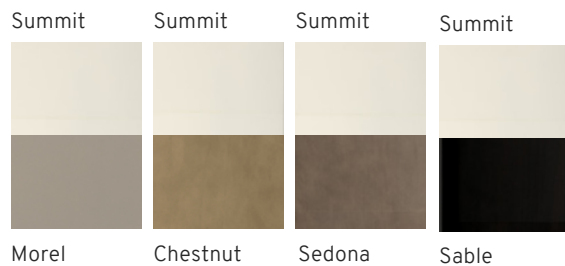
CONTEMPORARY



TRADITIONAL



TWO-TONE

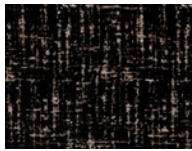


INTERIOR DECOR OPTIONS

MILLSTONE (SHOWN IN IMAGES)



Leather Furniture & Ceiling Accent



Dinette Chair & Pillows



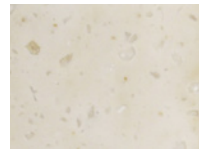
Bedspread & Bedroom Windows



Bed Pillow



Porcelain Flooring
(Or Optional Polished Porcelain)



Countertops

BARRINGTON



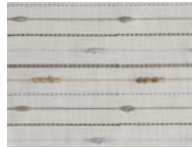
Leather Furniture & Ceiling Accent



Dinette Chair & Pillows



Bedspread & Bedroom Windows



Bed Pillow



Porcelain Flooring
(Or Optional Polished Porcelain)



Countertops

MONTCLAIR



Leather Furniture & Ceiling Accent



Dinette Chair & Pillows



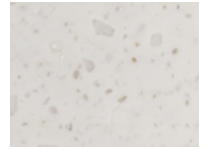
Bedspread & Bedroom Windows



Bed Pillow

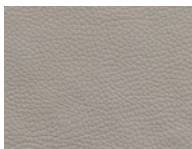


Porcelain Flooring
(Or Optional Polished Porcelain)

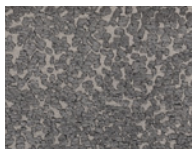


Countertops

BISMARCK



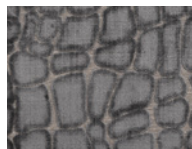
Leather Furniture & Ceiling Accent



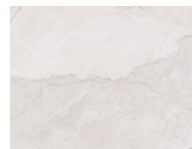
Dinette Chair & Pillows



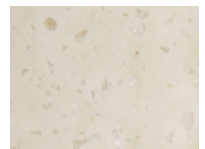
Bedspread & Bedroom Windows



Bed Pillow



Porcelain Flooring
(Or Optional Polished Porcelain)



Countertops

Exterior color and interior décor options may be matched to customer preference, subject to availability. Please see your dealer for details.

EXTERIOR DESIGN OPTIONS

CONTEMPORARY



DRIFT & MIST
Charcoal Tweed Awning

ECHO & EMBER
Charcoal Tweed Awning



HEARTH & HOLLOW
Charcoal Tweed Awning



SAPPHIRE & STONE
Charcoal Tweed Awning



TRADITIONAL



CHAMPAGNE
Charcoal Tweed Awning

RADIANCE
Charcoal Tweed Awning



SEASPRAY
Charcoal Tweed Awning



WATERLOO
Charcoal Tweed Awning



FEATURES

- + Industry-Exclusive Full-Paint Masterpiece Finish™ with Clearcoat and Cut and Buff
- + New Exterior Graphics and Colors with Eight Color Combinations*
- + Available in Contemporary and Traditional Styles

- + Ability to Customize Color Selections
- + Front Cap Diamond Shield Protection
- + Onyx Package Available (Optional)
- + Artisan Custom Paint Process Available (Optional)

*New for 2027

Exterior color and interior décor options may be matched to customer preference, subject to availability. Please see your dealer for details.

ONYX EXTERIOR PACKAGE

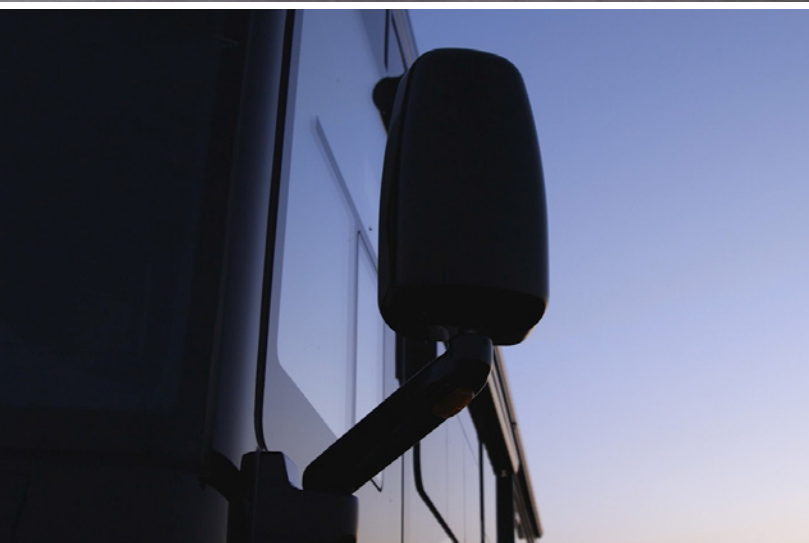
KEY FEATURES

- + The Onyx Exterior Package replaces standard chrome accents with a sleek, blacked-out finish.
- + Exclusively available on the following coaches: King Aire, Essex, London Aire, Mountain Aire, New Aire, Dutch Star, Summit Aire, Supreme Aire, Super Star, Grand Star and Freedom Aire.
- + Not available on Bay Star, Bay Star Sport, Ventana, Northern Star and Canyon Star.
- + The Onyx Exterior Package is exclusively pre-order only and is not available aftermarket. To request a bold black-out style, see your Newmar dealer prior to purchase.

The Onyx Package includes the following features:

- + Front Cap Accents
- + Rear Cap Accents
- + Entrance Grab Handle
- + Rock Guard
- + Wheels and Center Caps
- + Mirrors
- + Front and Back Logos
- + Baggage Door Trim*

DUTCH STAR FEATURED IN IMAGES



*Baggage door trim is Standard on the King Aire, but optional for other eligible coaches.

THE ARTISAN SERIES CUSTOM PAINT PROCESS

EXCLUSIVE ONE-OF-ONE

- + Make an unmistakable statement with our new Artisan Series Custom Paint Process—a revolutionary approach to luxury coach aesthetics.
- + Every design is individually crafted once created, it's never repeated. Your custom coach is an exclusive reflection of you, truly one-of-a-kind.
- + It begins with your dealer, who will navigate you through exclusive graphic treatments and help tailor a color palette that embodies your vision.
- + Artisan Series Custom Paint Process elevates our most prestigious: King Aire, Essex, London Aire, Summit Aire and the 45' Supreme Aire.

KING AIRE AND SUMMIT AIRE FEATURED IN IMAGES



COCKPIT

KEY FEATURES

- + Industry-First Comfort Drive™ Adaptive Steering
- + Mobileye® Lane Tracking and Departure System
- + OnGuard™ Collision Mitigation Adaptive Cruise System
- + Heated and Air-Cooled Driver and Passenger Seats with Power-Lumbar, Recline and Footrest
- + Xite 360 Camera with Recording Functionality
- + Digital Glare-Free Dash
- + Xite Dash Radio with Apple CarPlay®, 10" Dual Monitor with Nav-N-Go Navigation System
- + Wireless Charging Mats
- + Xite HD 360 Camera System with Grid Lines and Tri-View Rear Camera



POPULAR UPGRADES

- + Extra Monitor On Passenger Side
- + Security System

CABIN

KEY FEATURES

- + Interior Lifecycle Update
- + 50" Samsung® 4K LED TV on Televator
- + Three 15K BTU Heat Pump Central Air Conditioners
- + Upgraded House Theater Sound Quality on Bose® Smart Ultra Soundbar*
- + Theater Seating Featuring Adjustable Headrests (Optional)*
- + Starlink Internet System (Subscription Required)
- + Electric Radiant Heat Installed Below Floor Tile
- + Pet Package: Includes Newmar-Branded Splash-Proof Water and Food Bowls, Exterior Leash Hook and Retractable Pet Gate (Optional)*

*New for 2027



POPULAR UPGRADE

- + Theater Seating With Adjustable Headrests

GALLEY & DINETTE

KEY FEATURES

- + Euro Booth Dinette
- + Dual-Zone Beverage Center (Optional)
- + 21.6 Cu. Ft. Bosch® Refrigerator
- + 30" Bosch® Stainless Steel Convection Microwave
- + Dovetail Cabinetry Drawers
- + Bosch® Three-Burner All-Electric Induction Flush Mount Cooktop
- + Fisher & Paykel® Dishwasher Wood Panel Front (Optional)*
- + Narrow Beverage Refrigerator in Pantry - Holds 6 Bottles (Optional)*
- + Super Polished Solid-Surface Countertops
- + Pantry with Large Drawer for Pots/Pans*

*New for 2027



POPULAR UPGRADES

- + Narrow Beverage Refrigerator in Pantry
- + Dual-Zone Beverage Center
- + Combo Desk Dinette with Buffet Table, Two Fixed and Two Folding Chairs

BEDROOM

KEY FEATURES

- + King-Size Bed with Pillow Top Mattress
- + Samsung® 4K LED TV
- + Lighted Wardrobe
- + Lifts On Bed Top
- + Fitted Bedspread and Accent Pillows
- + Cedar Paneling In Bedroom Wardrobe (Floor Plan Specific)
- + Designer Feature Ceiling With Cathedral Ceiling For Added Height
- + Safe Located In Wardrobe* (Floor Plan 4545 is in Walk-In Closet)

**Safe Location Varies by Floor Plan*



POPULAR UPGRADES

- + Bunk Beds Converted to Dedicated Workspace with Desk and Chair (Floor Plan 4540)
- + Walk-In Closet Converted to Bunk Beds in Rear of Coach (Floor Plan 4545)

BATHROOM

KEY FEATURES

- + Bath and a Half Model with Luxurious Full Bath in Rear and Half-Bath Midship
- + Primary Bath Features Dual Sinks and Fully Tiled Shower Walls and Floor
- + Aqua Miser® Shower System
- + Chinook Dual Loop Heat with Continuous Hot Water
- + Stacked Two-Piece Splendide® Washer and Dryer*
- + Polished Solid-Surface Countertop
- + Cathedral Ceiling for Added Height
- + Bidet Stool In Rear Bath (Optional)**

*Floor Plan 4545 Features Washer and Dryer in Walk-In Closet
 **New for 2027



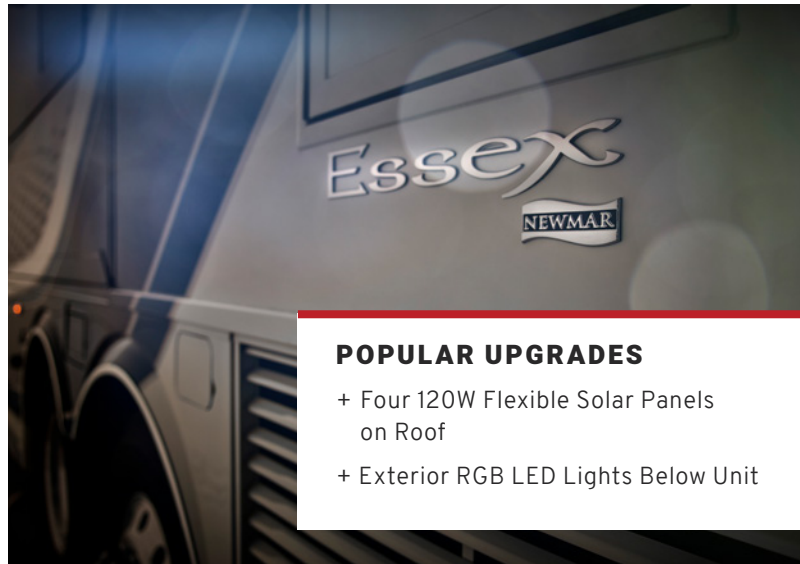
POPULAR UPGRADE
 + Bidet Stool

EXTERIOR FEATURES

KEY FEATURES

- + Industry-Exclusive Full-Paint Masterpiece Finish™ with Clearcoat and Cut and Buff
- + Exterior Entertainment Center with 43" Samsung® 4K LED TV and Soundbar
- + Push-Button Exterior Baggage Doors
- + 3.0 Cu. Ft. Dometic® Freezer on Pull-Out Tray
- + Exterior RGB LED Lights Below Unit (Optional)*
- + Artisan Series Custom Paint Process Available (Optional)
- + Onyx Package Available (Optional)

*New for 2027

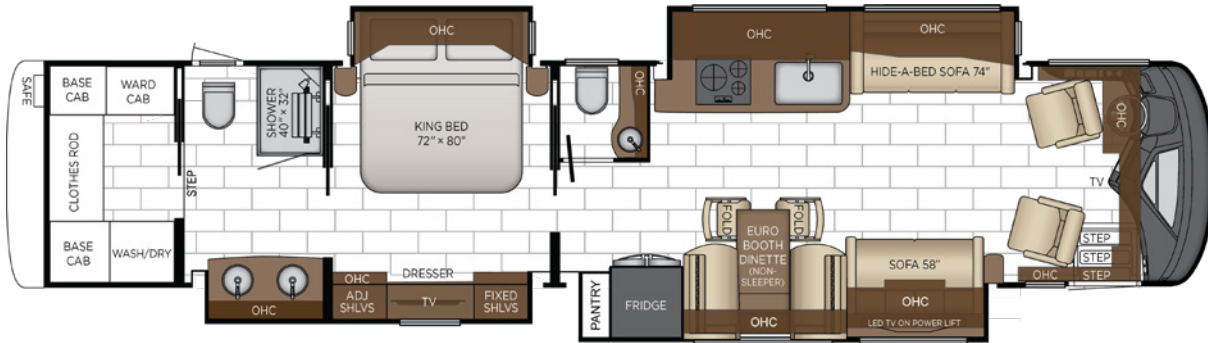


POPULAR UPGRADES

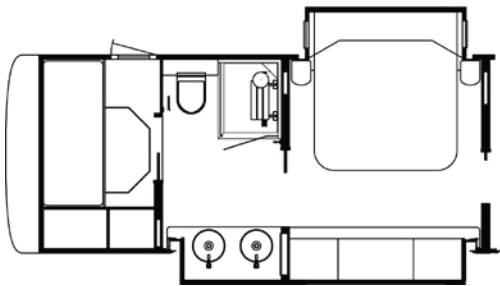
- + Four 120W Flexible Solar Panels on Roof
- + Exterior RGB LED Lights Below Unit

4545 FLOOR PLAN

STANDARD



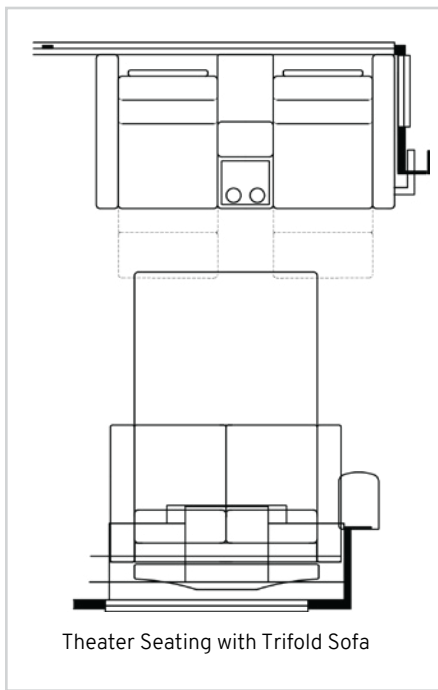
OPTIONS



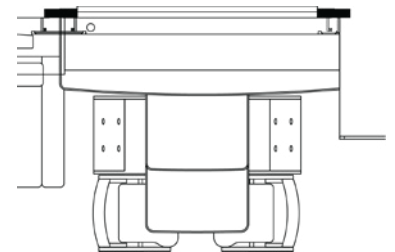
Bunk Beds in Rear Replaces Wardrobe, Washer and Dryer in Dresser with Retractable Bed Base



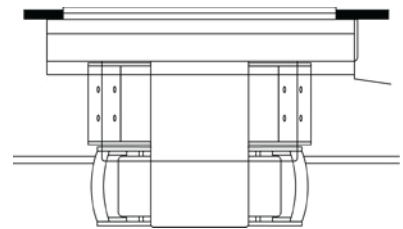
Ottoman



Theater Seating with Trifold Sofa



Combination Desk with Buffet Table



Convertible Dinette

PERFECT FOR

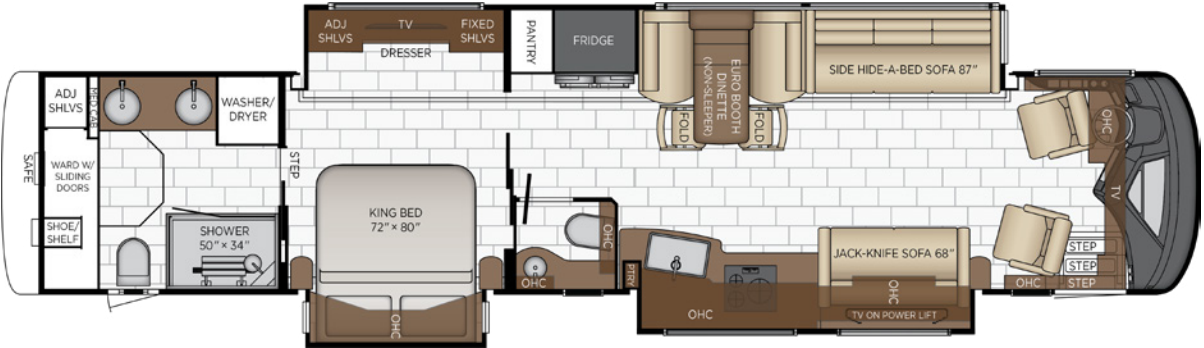
- + Couples Seeking a Spacious Primary Suite with Walk-In Closet
- + Families Who Prefer Bunk Beds at the Rear of the Coach
- + Hosts Seeking Midship Half Bath

Length	44' 10"	Interior Height	83"	Furnace	50,000 BTU
Width	101.5"	Grey Tank	80 gal.	Sleeps	2-4 People
App. Overall Height	13' 04"	Sewage Tank	60 gal.		
Interior Width	95.5"	Water Tank	105 gal.		

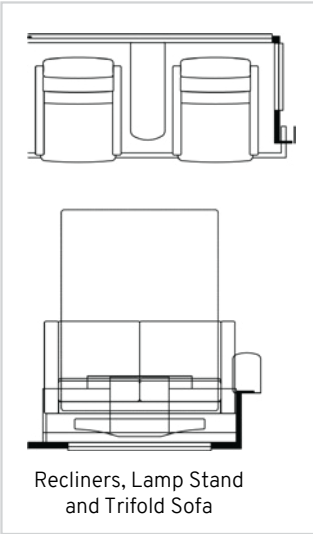
Our Most-Popular 45' Floor Plan

4551 FLOOR PLAN

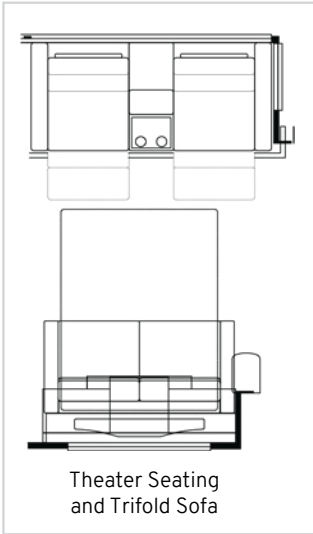
STANDARD



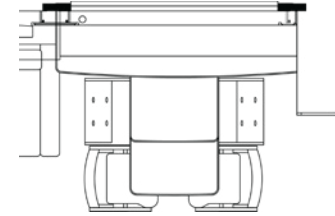
OPTIONS



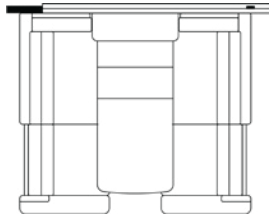
Recliners, Lamp Stand and Trifold Sofa



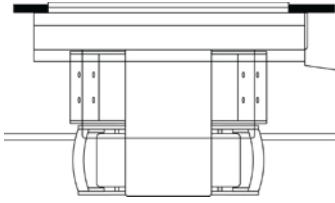
Theater Seating and Trifold Sofa



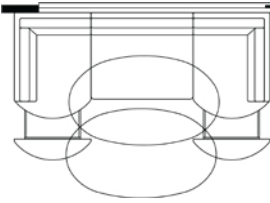
Combination Desk with Buffet Table



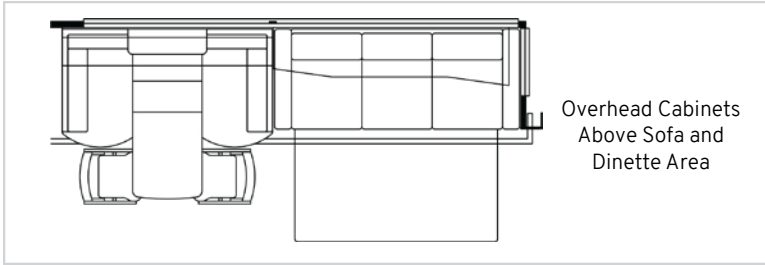
Powered Dinette



Convertible Dinette



U-Dinette



Overhead Cabinets Above Sofa and Dinette Area



Ottoman

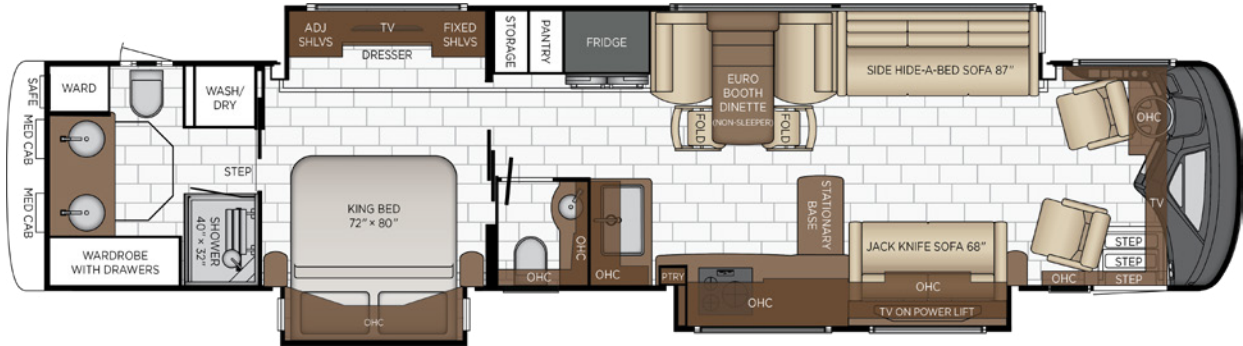
PERFECT FOR

- + Discerning Couples
- + Aspiring Chefs Seeking Spacious Kitchens
- + Hosts Seeking Midship Half Bath

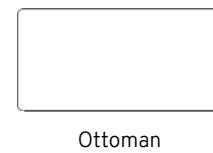
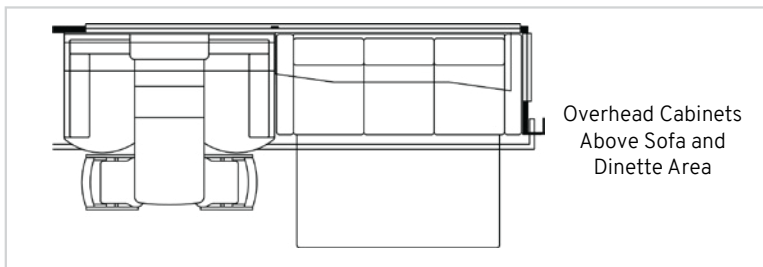
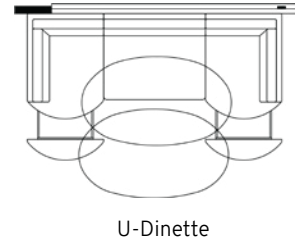
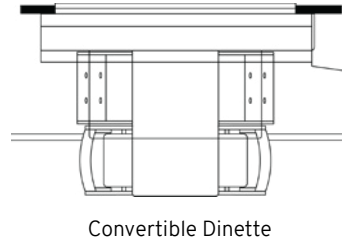
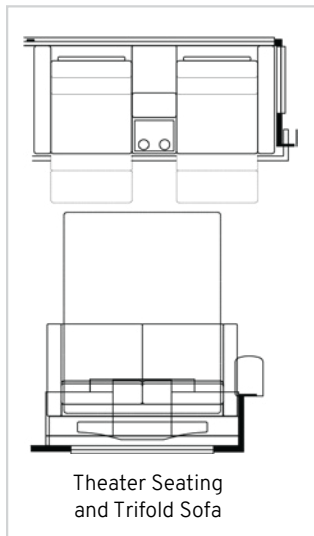
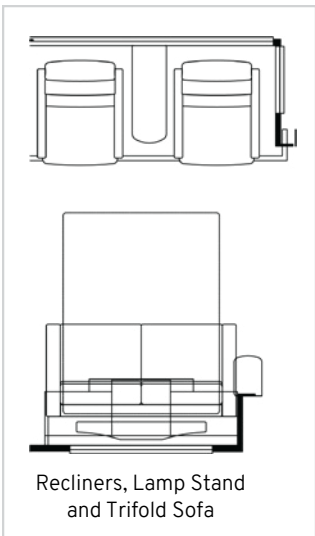
Length	44' 10"	Interior Height	83"	Furnace	50,000 BTU
Width	101.5"	Grey Tank	80 gal.	Sleeps	2-5 People
App. Overall Height	13' 04"	Sewage Tank	60 gal.		
Interior Width	95.5"	Water Tank	105 gal.		

4569 FLOOR PLAN

STANDARD



OPTIONS



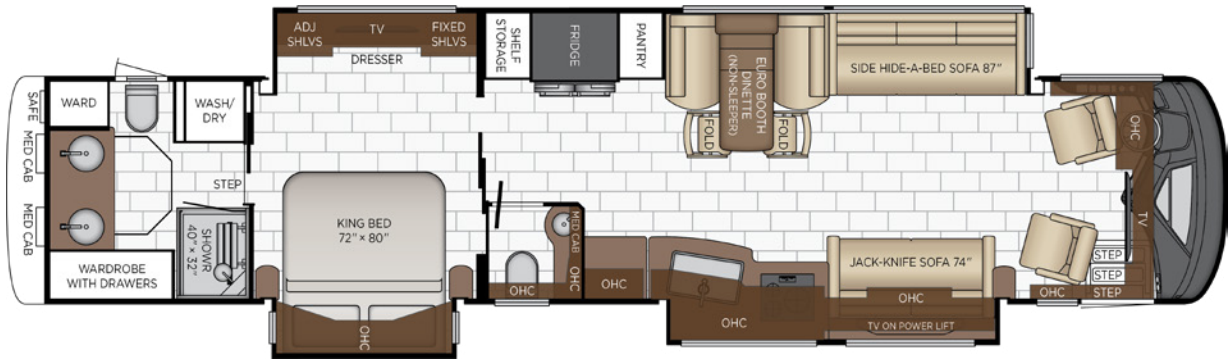
PERFECT FOR

- + Full-Timer or Most-Timer Couples
- + Chefs Seeking More Prep Space
- + Hosts Seeking Midship Half Bath

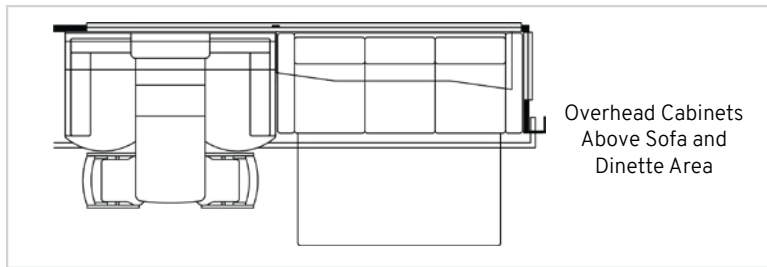
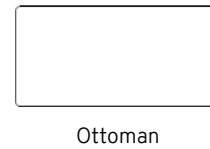
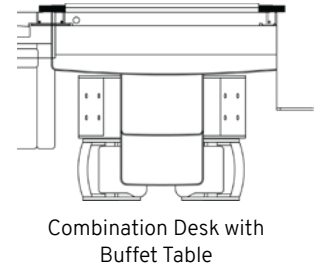
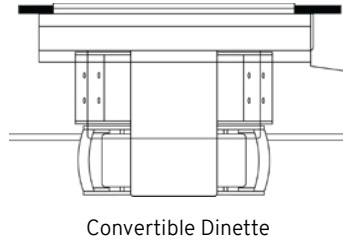
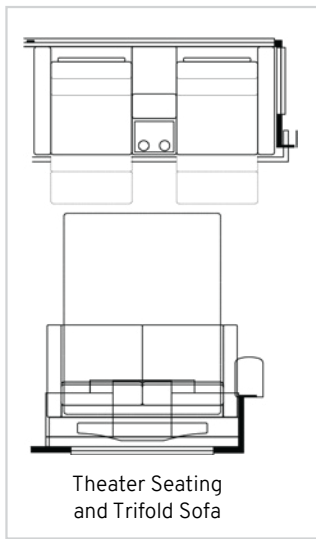
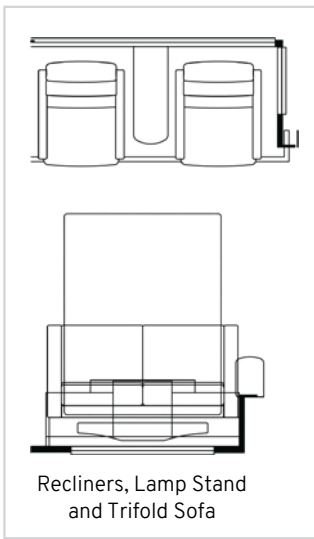
Length	44' 10"	Interior Height	83"	Furnace	50,000 BTU
Width	101.5"	Grey Tank	80 gal.	Sleeps	2-5 People
App. Overall Height	13' 04"	Sewage Tank	60 gal.		
Interior Width	95.5"	Water Tank	105 gal.		

4595 FLOOR PLAN

STANDARD



OPTIONS



PERFECT FOR

- + Full-Timer and Most-Timer Couples
- + Luxury Resort
- + Chefs Seeking More Prep Space

Length	44' 10"	Interior Height	83"	Furnace	50,000 BTU
Width	101.5"	Grey Tank	80 gal.	Sleeps	2-5 People
App. Overall Height	13' 04"	Sewage Tank	60 gal.		
Interior Width	95.5"	Water Tank	105 gal.		

FLOOR PLAN SPECIFICATIONS

FLOOR PLAN KEY FEATURES

+ 4545:

- **Perfect For:** Couples Seeking a Spacious Primary Suite with Walk-In Closet, Families Who Prefer Bunk Beds at the Rear of the Coach, Hosts Seeking Midship Half Bath
- **Key Features:** King-Size Bedroom, EnSuite Bathroom, Washer and Dryer, Optional Rear Bunk Beds, Midship Full Bath, Optimized Kitchen Layout, Ample Seating

+ 4551:

- **Perfect For:** Discerning Couples, Aspiring Chefs Seeking Spacious Kitchens, Hosts Seeking Midship Half Bath
- **Key Features:** Spacious Kitchen With Expandable Countertop, Mid-Ship Half Bath, Luxurious King-Size Bedroom Suite, Newmar's Most Popular 45' Floor Plan

+ 4569:

- **Perfect For:** Full-Timer and Most-Timer Couples, Chefs Seeking More Prep Space, Hosts Seeking Midship Half Bath
- **Key Features:** Thoughtfully Designed Kitchen With Stationary Island, Exceptional Storage and Food Prep Space, Midship Half Bath, Luxurious King-Size Bedroom Suite

+ 4595:

- **Perfect For:** Full-Timer and Most-Timer Couples, Luxury Resort, Chefs Seeking More Prep Space
- **Key Features:** Cleverly Configured Kitchen, Twin Pantries, Optional Beverage Refrigerator, Optional Dishwasher, Midship Half Bath, Luxurious King Bedroom

FLOOR PLAN SPECIFICATIONS

FLOOR PLAN	LENGTH	WIDTH	APP. OVERALL HEIGHT	INTERIOR WIDTH	INTERIOR HEIGHT	GREY TANK	SEWAGE TANK	WATER TANK	FURNACE	SLEEPS
4545	44' 10"	101.5"	13' 04"	95.5"	83"	80 gal.	60 gal.	105 gal.	50,000 BTU	2-4
4551	44' 10"	101.5"	13' 04"	95.5"	83"	80 gal.	60 gal.	105 gal.	50,000 BTU	2-5
4569	44' 10"	101.5"	13' 04"	95.5"	83"	80 gal.	60 gal.	105 gal.	50,000 BTU	2-5
4595	44' 10"	101.5"	13' 04"	95.5"	83"	80 gal.	60 gal.	105 gal.	50,000 BTU	2-5

The content in our literature depicts and describes products that are subject to change. For the most recent images and information, please visit NewmarCorp.com. Lengths, heights, widths, and dry weights are approximate. Weight will vary based on optional equipment added to the above base weight.

CHASSIS



CHASSIS

- + Freightliner® Custom Chassis SL Tag Axle
- + Spartan® K3 Tag Axle Chassis
- + California Compliance Available

HORSE POWER
605 HP
 Cummins X15 Diesel Engine

FUEL TANK

175 GAL

LENGTH

45 FT

TORQUE

1,950 LB/FT

AXLES

3

Tag Axle Equipped on all 40'+ Models

TIRE SIZE

22.5"

Michelin Brand
 Front: 365/70R 22.5 20-ply
 Rear & Tag: 315/80R 22.5 20-ply

STEERING WHEEL

Comfort Drive™ Adaptive Steering with Power Column and Adjustable Control

SAFETY

- + Mobileye® Lane Tracking and Lane
- + Departure Warning System
- + OnGuard™ Collision Mitigation
- + Adaptive Cruise System with Adjustable Following Distance Control
- + Electronic Stability Control

TRANSMISSION

Allison 4000MH

CHASSIS SPECIFICATIONS

GLOSSARY

- + **GAWR:** Gross Axle Weight Rating is the maximum permissible weight for an axle.
- + **GVWR:** Gross Vehicle Weight Rating is the maximum permissible weight for a fully loaded motor coach.
- + **GCWR:** Gross Combination Weight Rating is the value specified by the manufacturer of the vehicle as the maximum allowable loaded weight of this motor coach and any towed trailer or towed vehicle.
- + **UVW:** Unloaded Vehicle Weight is the weight of this motor coach as built at the factory with full fuel, engine oil, and coolants. Does not include cargo, fresh water, propane gas, or dealer-installed accessories.
- + **NCC:** Net Carrying Capacity is the maximum weight of all occupants, including the driver, personal belongings, food, fresh water, waste water, propane gas, tools, tongue weight of towed vehicle, dealer-installed accessories, etc., that can be carried by the motor coach.
- + Specifications supplied by the chassis manufacturer.

SPARTAN® CHASSIS												
FLOOR PLAN	ENGINE HP	AXLE RATIO	FUEL CAP.	WHEEL BASE	TIRE SIZE	FRONT GAWR	REAR GAWR	TAG GAWR	GVWR	GCWR	APP. UVW	APP. NCC
4545	605	4.3	175	292+TAG	22.5"	2000 lb.	20000 lb.	14000 lb.	54000 lb.	74000 lb.	46500 lb.	7500 lb.
4551	605	4.3	175	292+TAG	22.5"	2000 lb.	20000 lb.	14000 lb.	54000 lb.	74000 lb.	46500 lb.	7500 lb.
4569	605	4.3	175	292+TAG	22.5"	2000 lb.	20000 lb.	14000 lb.	54000 lb.	74000 lb.	46400 lb.	7600 lb.
4595	605	4.3	175	292+TAG	22.5"	2000 lb.	20000 lb.	14000 lb.	54000 lb.	74000 lb.	46400 lb.	7600 lb.

FREIGHTLINER® CUSTOM CHASSIS												
FLOOR PLAN	ENGINE HP	AXLE RATIO	FUEL CAP.	WHEEL BASE	TIRE SIZE	FRONT GAWR	REAR GAWR	TAG GAWR	GVWR	GCWR	APP. UVW	APP. NCC
4545	605	4.3	175	292+TAG	22.5"	2000 lb.	20000 lb.	14000 lb.	54000 lb.	74000 lb.	47300 lb.	6700 lb.
4551	605	4.3	175	292+TAG	22.5"	2000 lb.	20000 lb.	14000 lb.	54000 lb.	74000 lb.	47400 lb.	6600 lb.
4569	605	4.3	175	292+TAG	22.5"	2000 lb.	20000 lb.	14000 lb.	54000 lb.	74000 lb.	47300 lb.	6700 lb.
4595	605	4.3	175	292+TAG	22.5"	2000 lb.	20000 lb.	14000 lb.	54000 lb.	74000 lb.	47100 lb.	6900 lb.

The content in our literature depicts and describes products that are subject to change. For the most recent images and information, please visit NewmarCorp.com. Lengths, heights, widths, and dry weights are approximate. Weight will vary based on optional equipment added to the above base weight.

STANDARD FEATURES & OPTIONS

EXTERIOR FEATURES

- Exterior Full-Paint Masterpiece Finish™ With Cut and Buff and Clearcoat
- Push Button Release Baggage Door, Keyless Entrance Door With Touchpad and Door Bell
- Entrance Door Assist Handle
- Automatic Entrance Door Step
- Dual-Latched Entrance Door With Power Flush Stepwell Cover
- Convex Chrome Exterior Mirrors with Defrost, Remote Control, Turn Signal Indicators and Side-View Cameras
- Front Cap Beta Fusion Protection
- Holding Tank Levels Displayed In Exterior Water Works Compartment
- Hydraulic Leveling Jacks
- Mud Flaps
- Rear Hitch For Towing Car
- Stainless Steel Exterior Trim Pieces And Entrance Door Kick Panel
- Storage Bins In Pegboard Compartment
- Rear Protective Tow Guard with Stainless Newmar Name Cutout
- Undercoating

OPTIONS

- Onyx Package with Black Aluminum Powder Coat Trim Kit For Exterior Compartment Doors
- Artisan Series Custom Paint Process
- Flag Pole Bracket
- Stainless Steel Trim Kit For Exterior Compartment Doors
- Non-Powered Storage Trays (Size and Placement are Floor Plan Specific)
- Powered Storage Trays (Size and Placement are Floor Plan Specific)

CONSTRUCTION FEATURES

- 16" On-Center Aluminum Frame Sidewalls and Roof Construction
- Egress Door With Ladder System
- Fiberglass Roof And Integrated Gutter Rail
- Foam Insulation 5/8" Laminated In Sidewalls and Ceiling
- Gelcoated Fiberglass Exterior Sidewalls, Front and Rear Caps
- Polar Pak R19 Batten Insulation In Roof
- Slideout Automatic Lock Arms On Non Hydraulic - Paddle Style

WINDOWS, AWNINGS, & VENTS

- Fan-Tastic® Vent with Rain Sensor with Hardwood Louver Cover in Kitchen, Bath and Enclosed Stool Room
- Dual Girard® Nova Side Awnings with Wind Sensor, Remote Control and LED Lights
- Girard® Slideout Covers, Entrance Door and Power Armless Window Awnings On Most Windows
- Kitchen Window
- Power Window On Driver Side
- Frameless Double-Pane Tinted Safety Glass Windows

- Large Non-Ventilated Living Room And Dinette Windows
- One-Piece Tinted Windshield

CHASSIS FEATURES

- Air Leveling Control System
- Anti-Lock Braking System
- Auto Rain Sense Wipers
- Back-Up Alarm
- Mobilitye® Displayed on Digital Dash on Freightliner® Custom Chassis
- Blind Spot Detection
- Cockpit Seat Belts Latch Sensors
- Cockpit Seat Occupancy Sensors
- Comfort Drive™ Adaptive Steering with Power Column and Adjustable Control
- Cruise Control
- Cummins® Connected Diagnostic System
- Driver Seat Memory Settings For Pedals, Steering Column and Mirrors On Spartan® Chassis
- Electronic Chassis Information Center In Dash
- Electronic Stability Control
- Push Button Engine Start
- Glass Dash Instrument Panel
- Automatic High Beam Headlights
- Automatic On/Off Headlights
- Mobilitye® Displayed on Digital Dash Via Xite Radio Interface on Spartan® Chassis
- Mobilitye® Lane Tracking And Lane Departure Warning System
- OnGuard™ Collision Mitigation Adaptive Cruise System with Adjustable Following Distance Control
- Recessed Fuel Fills, With Cross Over To Fill From Either Side
- Seat Belt Warning Indicator In Dash Display
- Freightliner® Custom Chassis, Tag Axle, 605 HP, 45' Essex
- Nine Function Switch Pod In Center Steering Wheel On Spartan® Chassis or Drive Tech Steering Wheel with Integrated Transmission Controls on Freightliner Custom Chassis®
- Power Tilt/Telescope Steering Wheel with VIP Smart Wheel
- Tank Dump Side Tilt Mode
- Tire Pressures Displayed On Glass Dash
- Trailer Tow Mode
- Valid Digital Glare Free Dash On Spartan® Chassis or Optiview® Glare Free Dash on Freightliner Custom Chassis®
- Valor Generation 3 TPMS System

OPTIONS

- Curt Spectrum Integrated Brake Control
- Freightliner® Custom Chassis, Tag Axle, 605 HP, 45' Essex California Compliance

STANDARD FEATURES & OPTIONS (CONTINUED)

- Freightliner® Custom Chassis, Tag Axle, 605 HP, 45' Essex, Onyx Package
- Freightliner® Custom Chassis, Tag Axle, 605 HP, 45' Essex, Onyx Package, California Compliance
- Spartan® K3, Tag Axle, 605 HP, 45' Essex
- Spartan® K3, Tag Axle, 605 HP, 45' Essex, Onyx Package
- Spartan® K3, Tag Axle, 605 HP, 45' Essex, California Compliance
- Spartan® K3, Tag Axle, 605 HP, 45' Essex, Onyx Package, California Compliance

AIR CONDITIONING & HEATING

- Three 15K BTU Heat Pump Air Conditioners With Remote Control Thermostat
- Air Conditioning Drainage System For Roof
- Chinook Dual Loop Heat With Continuous Hot Water
- Dash Heater and Air Conditioner
- Driver and Passenger Dash Overhead Ventilation System
- Dual Zone HVAC in Cockpit Area
- Electric Radiant Heat Installed Below Floor Tile

ELECTRICAL FEATURES

- Accent Lights In Feature Ceiling, Lambrequins, Kitchen, Bed Base, Fascia Trim and Under Dash
- Automatic Generator Start On Low Battery Or Temperature Setting
- Battery Disconnect Switch For House Battery
- Cable TV Connection
- Dash Radio, Cameras And Monitors To Power Up From Both House Batteries and Ignition
- LED Docking Lights With Stainless Steel Trim
- 50 Amp Electrical Service With Flexible Cord And Automatic Transfer Switch
- Emergency Engine Start Switch
- Engine Block Heater
- Exterior LED Accent Lights Above Rear Tow Guard
- Exterior Security Lights, One Installed On Each Side
- Interior Courtesy Lights
- LED Lights In Exterior Storage Compartments On Automatic Switches
- LED Lights In Pullout Pantry, Kitchen And Bathroom Base Cabinets
- LED Lights Installed Under Door Side Slideouts
- LED Lights Recessed In Ceiling and Underneath Overhead Cabinets
- LED Lights Installed Under Off-Door Side Slideouts
- Lighted Vanity Mirrors
- 640 AHR Lithionics® Lithium Ion Battery System with Two 3000W Pure Sine Inverters (UL Approved)
- Midship Side Turn Signals
- Multiplex Electrical Wiring System
- Multiplex Lighting Control System

- 10.1" Multiplex Monitor System In Center Of Coach with Interior Lighting and HVAC Controls
- Newmar App
- 12.5 kW Cummins Onan® Diesel Generator with Auto Changeover on Hydraulic Slide Out Tray
- Power Rewind Reel With 50' Cord
- Reading Lights At Head Of Bed - Dimmable With Adjustable Aim
- Rear Hitch Docking Light
- 110V Recept In Bed Overhead With Two Pass Through Ports
- 110V/USB At Head Of Each Bunk Area (Floor Plan Specific)
- 12V Recept Auxiliary On Dashboard
- Slideout Switch Manually Operated Hold To Run
- 10W Solar Panel (To Charge Chassis Battery)
- Solar Prep With 6 Gauge Wire Ran From Roof To House Battery Compartment (N/A with L020 Option)
- Spare Fuses In Chassis Fuse Panel
- Spare Fuses In House Fuse Panel
- Transfer Switch With Surge Protector
- USB Outlet At Dash For Driver Use
- USB Outlet High Power At Dinette and Bedroom Night Stand
- Wireless Charging Mat Built Into Dash And Nightstands Countertops
- Wireless Charging Mat Built Into Passenger Console

OPTIONS

- 30 Amp/120V Cord Connection for Stacker Trailer
- Exterior RGB LED Lights Below Unit
- Four 120W Flexible Solar Panels On Roof
- Roof-Mounted Spot Light
- Third 320 AHR Lithionics® Lithium Ion Battery (UL Approved)

PLUMBING & BATH FEATURES

- Aqua Miser® Shower System
- Assist Handle - Each Shower
- Auto Fill For Fresh Water Tank
- Bladder Tank For Water Pump System
- Demand Water System
- Dump Valves Power For Holding Tanks
- Exterior Convenience Station - Hot/Cold Water and Towel Dispenser
- Hot Water Line To Generator Area
- Manifold Plumbing System
- Power Reel For Water Hose
- RV Sanicon Turbo System
- Sewage and Grey Holding Tank Rinse
- Fully-Tiled Shower Walls and Floor
- Fold-Down Shower Seat (Floor Plan Specific)
- Dometic® Concerto Electric Flush or Macerator China Bowl Stool (Varies Per Floor Plan)
- Water Filter, For Entire Unit

STANDARD FEATURES & OPTIONS (CONTINUED)

OPTIONS
<input type="checkbox"/> Bidet Stool in Rear Bath
<input type="checkbox"/> Pressure Washer with Soft Water System

INTERIOR FEATURES

Auto Motion Power Shade at Windshield and Power Shades at Driver and Passenger Side Windows
Auto Motion Power Window Shades and Lambrequins
Fitted Non-Quilted Bedspread and Accent Pillows
Designer Feature Ceiling With Cathedral Ceiling And Added Height - Rear Bath Models
Interior Passage Hardwood Raised Panel Doors
Flush Handle On Swinging Bath Doors
Interior Assist Handle At Main Entry Door
Safe Located In Wardrobe
Maximized Shoe Storage Shelves Recessed In Rear Of Wardrobe (Floor Plan Specific)
Pullout Shoe Storage In Rear Wardrobe (Floor Plan Specific)
Tile Floor In Kitchen, Bathroom, Bedroom and Living Areas
Trim Ring Hardwood Around Windows
Waste Basket In Kitchen Base Under Sink
OPTIONS
<input type="checkbox"/> Pet Package: Includes Newmar-Branded Splash-Proof Water and Food Bowls, Exterior Leash Hook and Retractable Pet Gate

CABINETS & FURNITURE

Cabinet Construction Unitized With Full Overlay Doors
Concealed Cabinet Door Hinges
Soft-Close Cabinet Door (Side Hinge Doors Only)
Dovetail Drawers with Self Closing Full Extension Ball Bearing Guides
Cedar Paneling In Bedroom Wardrobe (Floor Plan Specific)
Super Polished Solid-Surface Countertop In Bathroom And Bedroom
Super Polished Solid-Surface Countertop In Kitchen, Undermounted Stainless Steel Sink and Sink Covers
Euro Booth Dinette With Two Table Leaves And Two Folding Chairs
Air-Cooled Driver and Passenger Seats
Heated Driver and Passenger Seats with Power-Lumbar, Recline, Footrest and Standard Width Passenger Seat
Leather Sofa And Front Seats With Integrated Seat Belts
Lifts On Bed Top
Air Mattress
Molded Silverware Divider Tray
Electric Pantry Door Travel Lock System
Pullout Pantry Shelves Pullout (See Floor Plans For Availability)
Pantry with Large Drawer for Pots/Pans
Sofa Side Hide-A-Bed With Memory Foam Mattress On Most Floor Plans
Full-Height Wardrobe Beside Lav (Floor Plan Specific)

OPTIONS
<input type="checkbox"/> Combo Desk Dinette with Buffet Table, Two Fixed and Two Folding Chairs
<input type="checkbox"/> Convertible Dinette with Two Fixed and Two Folding Chairs That Face To Window Or Fore/Aft Seating
<input type="checkbox"/> Power Extenda Flex Dinette (Floor Plan 4551)
<input type="checkbox"/> U Dinette With Power Adjustable Table (Floor Plans 4551 and 4569)
<input type="checkbox"/> Front Overhead Cabinets in Lieu of TV
<input type="checkbox"/> Driver Seat With Massage Feature
<input type="checkbox"/> One Ottoman (Not Available With Theater Seating)
<input type="checkbox"/> Overhead Cabinet Above Dinette
<input type="checkbox"/> Overhead Cabinet In Dinette/Living Room Slideout
<input type="checkbox"/> Queen-Size Passenger Seat
<input type="checkbox"/> Queen-Size Passenger Seat With Massage Feature
<input type="checkbox"/> Standard Width Passenger Seat With Massage Feature
<input type="checkbox"/> Two Recliners with Reading Lights and Lampstand Replaces Off-Door Side Hide-A-Bed Off Door Side, 68" Trifold Sofa Replaces Jackknife Sofa Door Side (Floor Plans 4551 & 4569)
<input type="checkbox"/> Two Recliners with Reading Lights And Lampstand Replace 87" Side Hide-A-Bed Off Door Side, 74" Trifold Sofa Replaces Jackknife Sofa Door Side
<input type="checkbox"/> 87" Powered Theater Seating with Adjustable Headrests Replaces Hide-A-Bed Off Door Side, 68" Trifold Sofa Replaces Jackknife Sofa on Door Side (Floor Plans 4551 & 4569)
<input type="checkbox"/> 87" Powered Theater Seating with Adjustable Headrests Replaces Hide-A-Bed on Off Door Side, 74" Trifold Sofa Replaces Jackknife Sofa on Door Side (Floor Plan 4595)

APPLIANCES & ACCESSORIES

Air Horns
Bosch® Three-Burner All-Electric Induction Flush Mount Cooktop
Central Vacuum With Tool Kit
3 Cu. Ft. Dometic® Freezer on Pullout Tray in Exterior Compartment
30" Bosch® Stainless Steel Convection Microwave
21.6 Cu. Ft. Bosch® Stainless Steel Refrigerator
Storage Shelf Above Freezer
Stacked Two-Piece Splendide® Washer and Dryer
OPTIONS
<input type="checkbox"/> Dual-Zone Beverage Center
<input type="checkbox"/> Narrow Beverage Refrigerator in Pantry (Holds 6 Bottles)
<input type="checkbox"/> Fisher & Paykel® Dishwasher in a Drawer With Wood Panel Front Located Below Cooktop

AUDIO, VIDEO & ACCESSORIES

Cat6 TV Cables
Doorbell Camera System at Entrance Door Connected to Remote App
Dash Radio With Touchscreen Navigation, Dual Monitors, Harman/JBL 360W Sound System and Subwoofer

STANDARD FEATURES & OPTIONS (CONTINUED)

- Exterior Entertainment Center with 43" Samsung® 4K LED TV and Soundbar
- 10 BC Fire Extinguisher, Carbon Monoxide, Smoke Detectors
- Infra Red Repeater System To Operate Audio/Video Components
- Internet Connectivity For Remote Access To Motorhome
- SiriusXM® Radio Capability with Antenna (Does Not Include Monthly Subscription)
- Satellite Dish Prep On Roof
- Bose® Smart Ultra Soundbar in Living Room
- Bose® Bedroom Speaker
- Bose® 500 Subwoofer
- Samsung® Tablet - With Control Of A/V Equipment, Lights, Shades, Keyless Entry and SilverLeaf® App
- TV Jack And 110V Recept In Door-Side Exterior Storage Compartment
- 43" Samsung® 4K LED TV In Front Overhead
- 50" Samsung® 4K LED TV On Televator In Living Area
- Samsung® LED TV In Living and Bedroom Areas (TV Sizes Vary Per Floor Plan)
- Starlink Internet System
- Xite Dash Radio with Apple CarPlay®, 10" Dual Monitor with Nav-N-Go Navigation System
- Xite HD 360 Camera System with Grid Lines and Tri-View Rear Camera

- OPTIONS**
- Two Rear Camera Prep For Use With Stacker Trailer
 - Extra Monitor On Passenger Side
 - Security System
 - Starlink Performance Internet System
 - Universal Toll Module
 - Winegard® Rayzar Automatic Digital TV Antenna
 - WiFi System Everest with Aspen Interior Router

OUR PARTNERS

THE NEWMAR DIFFERENCE™

The Newmar Difference™ begins with suppliers dedicated to providing our customers with unrivaled quality, comfort, and support. We only work with suppliers that are dedicated to providing our customers with unrivaled innovation, comfort, and reliability. It's all so you can experience best-in-class performance from names you can trust. At Newmar, that's our difference, and our promise.



BASF

The Coatings division of BASF is a global expert in the development and production of innovative and sustainable OEM and refinish coatings. Coatings by BASF—solutions beyond your imagination.



Freightliner® Custom Chassis

Freightliner® Custom Chassis are renowned for their exceptional ride, excellent maneuverability, advanced technology, and nationwide 24/7 factory-direct support.



Spartan® RV Chassis

An American company with over 40 years of experience in designing and manufacturing the premier motorhome chassis, Spartan® delivers superior performance, exceptional safety ratings, and industry-leading technology.



Industrial Finishes

Industrial Finishes has supported RV manufacturers for over four decades, offering paint products that deliver uncompromising quality and provide your coach with a true Masterpiece™ finish.



RiverPark

From Samsung® 4K TVs and Xite Infotainment systems to Bose® soundbars and JBL and Infinity premium audio systems, RiverPark helps ensure you enjoy the ultimate audio-visual technology in your Newmar coach.

THE NEWMAR CUSTOMER EXPERIENCE

The Newmar Difference™ goes beyond our industry-leading motor coaches to provide you with an unrivaled ownership experience.



Crafted with Purpose

Every Newmar is crafted one at a time by folks who have spent an average of eight years building them. Each coach we assemble must undergo more than 1,000 tests and checks before ever leaving our factory.



More Than a Number

Meet fellow owners through the Newmar Kountry Klub, a top social club for RV travelers that hosts rallies and other special events throughout the U.S. and Canada.



The Highest Standards

We view our dealership network in terms of quality, not quantity. Each of our dealers acts as a partner in our shared mission to exceed your highest of expectations, for an ownership experience that's second to none from day one.



Seamless Service

When you join the Newmar family, we pair you with a dedicated service specialist with expert knowledge of your exact coach. Our service specialists guarantee dealer warranty authorizations within four business hours and ship all in-stock parts the same day, free of charge.



Built Around You

As a Newmar owner, you'll find resources specific to your coach through Newgle, an easy-to-use knowledge base that houses everything from user guides to technical support documents.



Without Compromise

All models include a one-year/unlimited mileage limited warranty and a five-year, non-transferable structural warranty that covers your coach's superstructure in the event it fails to perform. Ask your Newmar dealer for more details.

CONTACT

Newmar Corporation
1952 Cheyenne St.
Nappanee, IN 46550

+ Phone: 574-773-7791
+ Fax: 574-773-2895
+ NewmarCorp.com

