



# 2027 CANYON STAR



BROAD. SOPHISTICATED. TRAIL-READY.

# WHY CANYON STAR

The 2027 Canyon Star stands alone as the only front-engine diesel Class A toy hauler on the market. Built for active adventurers, it blends powerful performance with a versatile living space, including a spacious 10' garage that adapts to your needs. Whether hauling gear, creating a workshop, or adding the optional patio conversion, the Canyon Star delivers capability and comfort for your biggest adventures.

## NEW FEATURES FOR 2027

- + Dash Camera Prep (Optional)
- + LED Exterior Security & Patio Light Now Standard
- + New Exterior Graphics and Colors
- + Starlink Internet System Now Standard (Subscription Required)
- + Pet Package: Includes Newmar-Branded Splash-Proof Water and Food Bowls, Exterior Leash Hook and Retractable Pet Gate (Optional)



## FLOOR PLANS

1

- + Length 39'
- + Bunk Option for Garage Available

## EXTERIORS

3

## INTERIOR DÉCORS

3

## CUSTOMIZATIONS

- + **Customization Options Include:** paint colors, fabrics, flooring
- + **Kitchen and Bath Customizations:** backsplashes, sinks, plumbing fixtures, and cabinet hardware
- + **Electrical Customizations:** interior and exterior outlet placement and custom wiring runs based on preference



# WHY NEWMAR

Every Newmar coach is crafted with purpose, tailored to you, and backed by unwavering support. This relentless pursuit of excellence shapes everything we do. From the precision of our engineering to the responsiveness of our service. From the innovation in our designs to the personalization that honors our customer’s vision.

## PRODUCT FEATURES

### Residential Build

At Newmar, we craft every coach with the same proven techniques used in quality residential construction. Strong, layered sidewalls pair with precisely placed C-channel aluminum studs set 16 inches on-center, while a robust truss-built roof protects your investment for the long haul. Inside, premium flooring adds stability and comfort, and durable aluminum-framed windows are built to stand the test of time, coming together to deliver a coach made to last.

### Masterpiece Finish™

Every Newmar coach is finished with our Full-Paint Masterpiece Finish™, an industry-exclusive process crafted with premium BASF paints and applied entirely within our own 45,000-square-foot paint facility by skilled Newmar artisans. We were the first RV manufacturer to offer full-body paint across every model we build—a testament to our unwavering commitment to quality and our belief that your motorhome should be as beautiful on the outside as it is welcoming on the inside.



# NEWMAR SERVICE

At Newmar, we deliver a seamless service experience designed to get you back out on the road as soon as possible. It's all about providing you with an uncompromising service experience from the day you take delivery of your new home on wheels.

## SERVICE FEATURES

### Personal Service Tech

The Newmar Service Center offers personal service technicians and the ability to camp onsite with full hookups, receive in-depth education, use private workstations, visit with other Newmar owners in our lounge, and enjoy convenient laundry facilities along with dedicated pet lounges and a pet park.

### NewServ Mobile

With NewServ, our technicians come to you for routine maintenance. Services like appliance fixes, water pump maintenance, and more are available in Southern California, Arizona, and Central Florida. To schedule your appointment, call 800-731-8300.

### Newgle for Product Knowledge

Explore Newgle—our free online knowledge base—packed with information straight from Newmar, as well as our component manufacturers and suppliers.

### Dedicated Brand Specialists

Newmar Service Account Managers, otherwise known as Brand Specialists, provide dealer warranty service authorizations within four business hours, and ship all in-stock parts the same day, via free ground shipment. And if a part is out of stock, they'll either pull it from the production floor or order the part from the appropriate supplier immediately.



# HARDWOOD CABINETRY OPTIONS

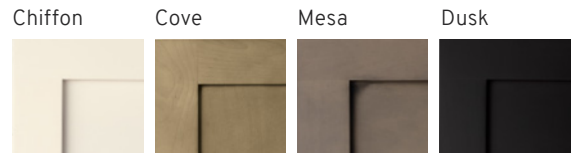
**COVE** (SHOWN IN IMAGE)



## FEATURES

- + Maple Hardwood Cabinet Doors in Suede Finish
- + Available in Four Solid Colors and Three Two-Tone Finishes
- + Concealed Cabinet Door Hinges
- + Soft-Close Cabinet Drawers
- + Dovetail Cabinetry Drawers with Full Extension Ball Bearing Guides

## CABINET COLOR OPTIONS

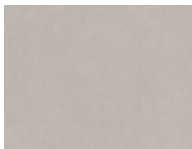


## TWO-TONE

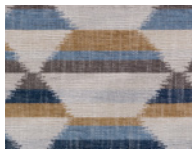


# INTERIOR DECOR OPTIONS

## EXCELSIOR (SHOWN IN IMAGES)



Leather Furniture & Ceiling Accent



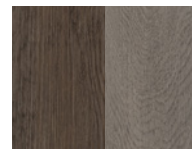
Dinette Chair & Pillows



Bedspread & Bedroom Windows



Bed Pillow



Vinyl Flooring Options



Countertops

## SHERBROOKE



Leather Furniture & Ceiling Accent



Dinette Chair & Pillows



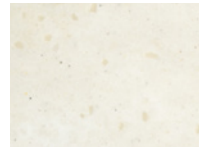
Bedspread & Bedroom Windows



Bed Pillow

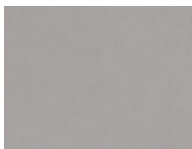


Vinyl Flooring Options

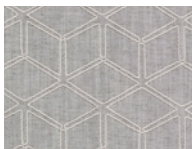


Countertops

## CAPILANO



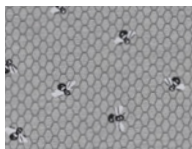
Leather Furniture & Ceiling Accent



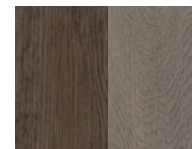
Dinette Chair & Pillows



Bedspread & Bedroom Windows



Bed Pillow



Vinyl Flooring Options



Countertops

Exterior color and interior décor options may be matched to customer preference, subject to availability. Please see your dealer for details.

## EXTERIOR DESIGN OPTIONS



### SILVER ASCENT

Charcoal Tweed Awning

### INDIGO HORIZON

Charcoal Tweed Awning



### GRANITE RUSH

Charcoal Tweed Awning



#### FEATURES

- + Industry-Exclusive Full-Paint Masterpiece Finish™ with Clearcoat and Cut and Buff
- + Smart Level Hydraulic Leveling Jacks with Bluetooth Compatible Touchpad
- + Chrome Baggage Door Locks
- + Convex Chrome Exterior Mirrors with Defrost and Remote Control
- + Front Cap Diamond Shield Protection

Exterior color and interior décor options may be matched to customer preference, subject to availability. Please see your dealer for details.

# COCKPIT

## KEY FEATURES

- + Six-Way Power Driver and Passenger Seats for a Smooth, Comfortable Ride
- + Optiview Glass Dash Instrument Panel for Advanced Navigation and Monitoring
- + Tilt Steering Wheel for Effortless Ergonomic Control
- + Xite Dash Radio with Integrated Entertainment and Navigation Capabilities
- + Side-View Cameras
- + USB and USB-C Charging Outlets
- + Dash Camera Prep (Optional)\*

\*New for 2027



## POPULAR UPGRADES

- + Power Window For Driver
- + Dash Camera Prep

# CABIN

## KEY FEATURES

- + Three Décor Options
- + Comfort Lounge Sofa Opposite of Sleeper Booth Dinette
- + Samsung® LED TV
- + Two 15K BTU Air Conditioners
- + Starlink Internet System (Subscription Required)
- + Pet Package: Includes Newmar-Branded Splash-Proof Water and Food Bowls, Exterior Leash Hook and Retractable Pet Gate (Optional)\*

\*New for 2027



## POPULAR UPGRADES

- + Euro Booth Dinette  
Replaces Standard
- + 74" Theater Seating (Powered)  
with Reading Lights Replaces  
Standard Sofa

## GALLEY & DINETTE

### KEY FEATURES

- + Efficient Kitchen Layout Designed to Support All Your Cooking Needs
- + 30" Stainless Steel Convection Microwave with Air Fryer Feature
- + Three-Burner Gas Cooktop with Piezo Ignition
- + 10 Cu. Ft. Norcold® Refrigerator
- + Dishwasher (Optional)
- + Dinette Booth Sleeper with Drawers for Added Storage (Euro Booth Option Available)



### POPULAR UPGRADES

- + Dishwasher
- + Two-Burner Induction Cooktop Replaces Standard Cooktop
- + 11 Cu. Ft. Whirlpool® Refrigerator with Icemaker

# BEDROOM

## KEY FEATURES

- + Queen-Size Bed with Pillow Top Mattress
- + Large Lighted Shirt Wardrobe
- + Fitted Bedsread and Accent Pillow
- + Decorative Wall Art
- + Electric Lift Bunk Beds with Seating, Pedestal Table and Removable Floor Rug in 10' Garage (Optional)



## POPULAR UPGRADES

- + Electric Lift Bunk Beds with Seating, Pedestal Table and Removable Floor Rug in 10' Garage
- + Stacked Two-Piece Splendide® Washer and Dryer in Garage with Extra Grey Tank

# BATHROOM

## KEY FEATURES

- + Midship Full Bath
- + 40" x 30" Fiberglass Shower with Skylight Above
- + Super Polished Solid-Surface Countertops
- + 110v Heat Pads for Holding Tanks
- + Truma AquaGo® Instant Continuous Flow Water Heater



## POPULAR UPGRADE

- + Fold-Down Shower Seat

# EXTERIOR FEATURES

## KEY FEATURES

- + 10' Rear Patio with Deck, Including Awning and Lights (Optional)
- + 10' Garage Featuring Rear Ramp Door without Hump
- + Electric Lift Bunk Beds with Seating, Pedestal Table and Removable Floor Rug in Garage (Optional)
- + 32" Samsung® LED TV in Garage
- + Stacked Two-Piece Splendide® Washer and Dryer in Garage (Optional)
- + LED Exterior Security and Patio Light

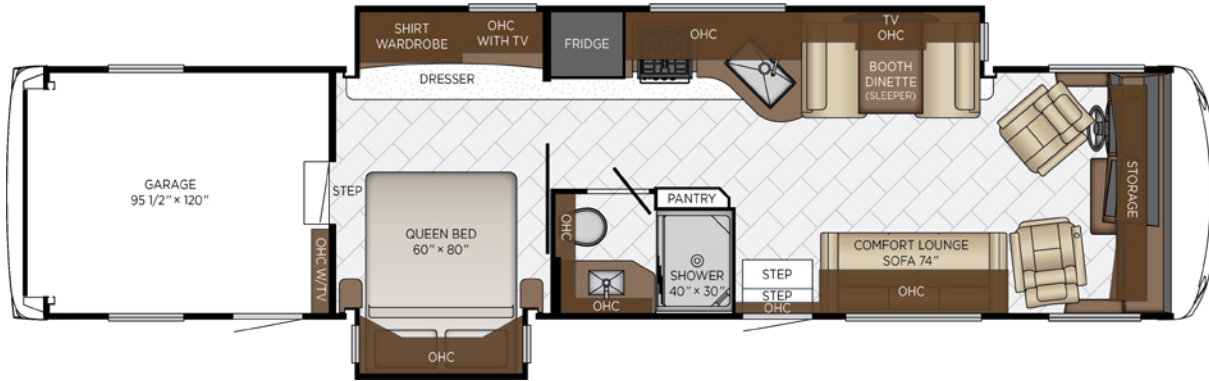


## POPULAR UPGRADES

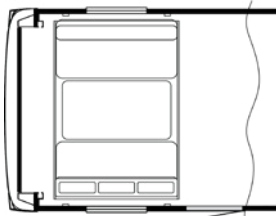
- + Rear Ramp Garage Power Door (Not Available with Rear Ladder)
- + Flag Pole Bracket
- + Rear Ladder (Not Available with Rear Ramp Garage Power Door)

# 3947 FLOOR PLAN

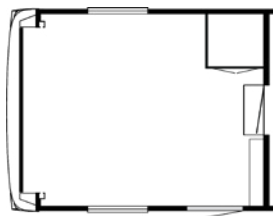
## STANDARD



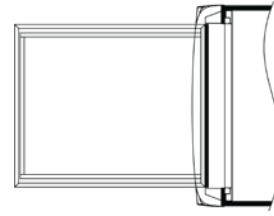
## OPTIONS



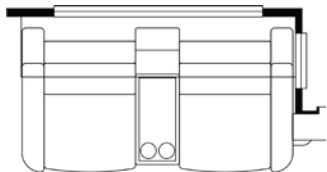
Electric Bunk Beds with Seats and Table



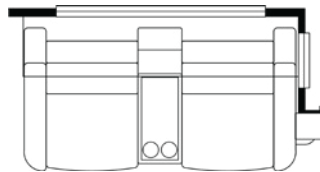
Washer and Dryer with Cabinet in Garage



Patio



Theater Seating



Euro Booth Dinette

## PERFECT FOR

- + Those Looking To Bring Their Toys
- + Those Seeking a Built-In Patio
- + Those Seeking Extra Bunk Space

Length	39' 11"	Interior Height	84"	Furnace	35,000 BTU
Width	101.5"	Grey Tank	60 gal.	Sleeps	2-6 People
App. Overall Height	12' 11"	Sewage Tank	40 gal.		
Interior Width	95.5"	Water Tank	75 gal.		

# FLOOR PLAN SPECIFICATIONS

## FLOOR PLAN KEY FEATURES

**+ 3947:**

- **Perfect For:** Those Looking To Bring Their Toys, Those Seeking a Built In Patio, Those Seeking Extra Bunk Space
- **Key Features:** 10' Garage Area Can Serve as Indoor/ Outdoor Patio Living Space and a Space for Toys, such as Motorcycles or ATVs, Midship Bath, Spacious Full Wall Slide, Optional Drop-Down Bunks, Queen-Size Bed

### FLOOR PLAN SPECIFICATIONS

FLOOR PLAN	LENGTH	WIDTH	APP. OVERALL HEIGHT	INTERIOR WIDTH	INTERIOR HEIGHT	GREY TANK	SEWAGE TANK	WATER TANK	FURNACE	SLEEPS
3947	39' 11"	101.5"	12' 11"	95.5"	84"	60 gal.	40 gal.	75 gal.	35,000 BTU	2-6

*The content in our literature depicts and describes products that are subject to change. For the most recent images and information, please visit NewmarCorp.com. Lengths, heights, widths, and dry weights are approximate. Weight will vary based on optional equipment added to the above base weight.*

# CHASSIS



## CHASSIS

+ Freightliner Custom Chassis®, 340HP  
Front Engine Diesel, 274" Wheel Base

## HORSE POWER

**340** <sub>HP</sub>  
Cummins B6.7 Diesel Engine

### FUEL TANK

**80** <sub>GAL</sub>

### LENGTH

**39** <sub>FT</sub>

### TORQUE

**700** <sub>LB/FT</sub>

### AXLES

**2**

### TIRE SIZE

**22.5"**

Michelin Brand  
275/80R14-Ply

### STEERING WHEEL

+ DriveTech Steering Wheel  
with Dash Controls  
+ Adjustable Tilt and  
Telescoping

### SAFETY

+ Electronic Stability Control  
+ Automatic Traction Control  
+ Collision Mitigation  
+ Adaptive Cruise Control

### TRANSMISSION

Allison 2500 MH Auto

# CHASSIS SPECIFICATIONS

## GLOSSARY

- + **GAWR:** Gross Axle Weight Rating is the maximum permissible weight for an axle.
- + **GVWR:** Gross Vehicle Weight Rating is the maximum permissible weight for a fully loaded motor coach.
- + **GCWR:** Gross Combination Weight Rating is the value specified by the manufacturer of the vehicle as the maximum allowable loaded weight of this motor coach and any towed trailer or towed vehicle.
- + **UVW:** Unloaded Vehicle Weight is the weight of this motor coach as built at the factory with full fuel, engine oil, and coolants. Does not include cargo, fresh water, propane gas, or dealer-installed accessories.
- + **NCC:** Net Carrying Capacity is the maximum weight of all occupants, including the driver, personal belongings, food, fresh water, waste water, propane gas, tools, tongue weight of towed vehicle, dealer-installed accessories, etc., that can be carried by the motor coach.
- + Specifications supplied by the chassis manufacturer.

### FREIGHTLINER® CUSTOM CHASSIS

FLOOR PLAN	ENGINE HP	AXLE RATIO	FUEL CAP.	WHEEL BASE	TIRE SIZE	FRONT GAWR	REAR GAWR	TAG GAWR	GVWR	GCWR	APP. UVW	APP. NCC
3947	340	5.13	80	274	22.5	12000 lb.	20000 lb.	0	32000 lb.	33000 lb.	25950 lb.	6050 lb.

*The content in our literature depicts and describes products that are subject to change. For the most recent images and information, please visit [NewmarCorp.com](http://NewmarCorp.com). Lengths, heights, widths, and dry weights are approximate. Weight will vary based on optional equipment added to the above base weight.*

# STANDARD FEATURES & OPTIONS

## EXTERIOR FEATURES

- Exterior Full-Paint Masterpiece Finish™ with Clearcoat and Cut and Buff
- Chrome Baggage Door Locks
- Entrance Door Assist Handle
- Entrance Door Automatic Step
- Entrance Door with Automatic Triple Step in Garage Area
- Convex Chrome Exterior Mirrors with Defrost and Remote Control
- Front Cap Diamond Shield Protection
- 10' Rear Ramp Garage Access Designed for ATV and Normal Clearance Motorcycle
- Smart Level Hydraulic Leveling Jacks with Bluetooth Compatible Touchpad Mud Flaps
- Rear Hitch for Towing Car
- Stainless Steel Exterior Trim Pieces on Front Cap and Grill Area
- Rear Protective Tow Guard with Stainless Newmar Letters
- Undercoating

## OPTIONS

- Flag Pole Bracket
- Rear Ramp Garage Door without Hump, Functions as a Deck with Patio Awning and Lights
- Rear Ramp Garage Power Door (Not Available with Rear Ladder)
- Rear Ladder (Not Available with Power Rear Ramp Door)
- Windshield Temporary Protection (For Transport Only)

## CONSTRUCTION FEATURES

- 16" On-Center Aluminum Frame Sidewalls and Roof Construction
- Gelcoated Fiberglass Exterior Sidewalls, Front and Rear Caps
- One-Piece Molded Fiberglass Roof
- Polar Pak R19 Batten Insulation in Roof
- Slideout Automatic Mechanical Lock Arms - Scissor Style

## WINDOWS, AWNINGS, & VENTS

- Armless Apex Dual Stage Awning with Strip Lighting
- Fan-Tastic® Vent with Rain Sensor in Kitchen, Bathroom and Garage Area
- Power Screen For Rear Garage Cargo Door
- Skylight Above Shower
- Slideout Covers
- Frameless Double-Pane Tinted Safety-Glass Windows
- One-Piece Tinted Windshield

## OPTIONS

- Power Window For Driver

## CHASSIS FEATURES

- Anti-Lock Braking System
- Cruise Control
- Digital Optiview Freightliner® Dash Panel

- Digital Dash Instrument Panel
- Freightliner® Custom Chassis, 340 HP Front Engine Diesel, 274" Wheel Base, California Compliance
- Allison 5-Speed 2500 MH Auto Transmission
- Tilt Steering Wheel
- Aluminum Wheels

## AIR CONDITIONING & HEATING

- Two 15K BTU Air Heat Pump Conditioners in Main House Area, One 13.5K BTU Heat Pump Air Conditioner in Garage
- Dash Heater and Air Conditioner
- Defrost Fans Built into Front Overhead
- Defrost System
- Propane Gas Furnace with Ducted Heat

## ELECTRICAL FEATURES

- Accent Lights in Slideout Fascia Trim
- Automatic Generator Start on Low Battery or Temperature Setting
- Battery Disconnect Switch for House Battery
- Cable TV Connection
- Dash Radio, Cameras and Monitors to Power Up from Both House Batteries and Ignition
- Daytime Running Lights
- Drain Lift Pump
- 50 Amp Electrical Service with Flexible Cord and Automatic Transfer Switch
- Emergency Engine Start Switch
- Energy Management System
- Fog Lights
- Six 6V House Batteries
- Interior Courtesy Lights
- 2000W Tru Sine Inverter with CPAP Prep
- LED Light on Awning
- LED Lights in Ceiling
- Lights in Exterior Storage Compartments, Controlled by an Interior Master Switch
- Lights in Wardrobes
- Multiplex Lighting Control System
- 10.1" Multiplex Monitor System in Center of Coach with Interior Lighting and HVAC Controls
- Newmar App
- 8.0 kW Cummins Onan® Diesel Quiet Series Generator
- 12V Recept Auxiliary on Dashboard
- Manual Slideout Switch
- 10W Solar Panel to Charge Chassis Battery
- Transfer Switch with Surge Protector
- USB Outlet at Dash for Driver Use

# STANDARD FEATURES & OPTIONS (CONTINUED)

USB Outlet at Passenger Seat Area

**OPTIONS**

- Four 120W Flexible Solar Panels on Roof
- Dash Camera Prep
- Solar Prep with 6 Gauge Wire Ran From Roof to First Storage Compartment

**PLUMBING & BATH FEATURES**

Demand Water System  
 Exterior Shower Located on Off-Door Side  
 Sewage Holding Tank Rinse  
 Fiberglass Surround Shower with Shower Door  
 Dometic® 321 China Bowl  
 Water Filter for Entire Unit  
 Water Heater Bypass System  
 Truma AquaGo® Instant Continuous Flow Water Heater

**OPTIONS**

- Fold-Down Shower Seat

**INTERIOR FEATURES**

Auto Motion Manual Double Roller Shades on Windows (Not on Garage Windows)  
 Auto Motion Power Shade at Windshield and Manual Shades at Driver and Passenger Side Windows  
 Fitted Bedspread and Accent Pillow  
 ABS Color-Coordinated Dash Panel  
 Decorative Wall Art  
 Interior Passage Inlaid Six Panel Design Doors  
 Diamond Tread Rubber Garage Floor  
 Interior Assist Handle at Main Entry Door  
 Padded Vinyl Ceiling Panels  
 Shoe Storage Located in Entrance Door Step Compartment  
 Hardwood Slideout Fascia  
 Tie Down Track in Garage Floor  
 Vinyl Plank Floor in Kitchen, Bathroom, Bedroom and Living Areas  
 Wastebasket in Kitchen Base Under Sink  
 Integrated Window Blind System on Entry Door  
 Woven Material on Slideout Floors

**OPTIONS**

- Two Wheel Chocks in Garage Area
- Newmar-Branded Splash-Proof Water and Food Bowls, Exterior Leash Hook and Retractable Pet Gate

**CABINETS & FURNITURE**

Concealed Cabinet Door Hinges  
 Soft-Close Cabinet Drawers  
 Dovetail Cabinetry Drawers with Full Extension Ball Bearing Guides

Flush Cooktop with Cover that Matches Countertop  
 Super Polished Solid-Surface Countertop in Bathroom and Bedroom  
 Super Polished Solid-Surface Countertop in Kitchen, Undermounted Sink and Sink Covers

Williamsburg Sleeper Booth Dinette  
 Drawers Underneath Dinette Booth Seats  
 Driver and Passenger Seats with Six-Way Power

Lifts on Bed Top  
 Plush Pillow Top Mattress  
 Molded Silverware Divider Tray  
 Pullout Pantry Shelves  
 Passenger Seat Tablet Holder  
 Passenger Seat with Manual Foot Rest

Williamsburg Sofa and Front Seats

**OPTIONS**

- Electric Lift Bunk Beds with Seating, Pedestal Table and Removable Floor Rug In 10' Garage
- Euro Booth Dinette Replaces Standard
- Air Mattress with Remote
- 74" Theater Seating (Powered) with Reading Lights Replaces Standard Sofa

**APPLIANCES & ACCESSORIES**

110V Heat Pads for Holding Tanks  
 30" Stainless Steel Microwave Convection with Air Fryer Feature and Three-Burner Cooktop  
 10 Cu. Ft. Norcold® Refrigerator

**OPTIONS**

- Central Vacuum with Tool Kit
- Two-Burner Induction Cooktop Replaces Standard Cooktop
- Dishwasher Under Cooktop
- 11 Cu. Ft. Whirlpool® Refrigerator
- 11 Cu. Ft. Whirlpool® Refrigerator with Ice Maker
- Washer and Dryer Prep in Garage with Extra Grey Tank
- Stacked Two-Piece Splendide® Washer and Dryer in Garage with Extra Grey Tank

**AUDIO, VIDEO & ACCESSORIES**

Side View Cameras Displayed onto Rear View Monitor Screen  
 180W Dash Radio with Harman/JBL Sound System  
 AM/FM/DVD Exterior Radio with Two Speakers Inside Garage Area and Two Speakers Outside  
 10 BC Fire Extinguisher in Garage  
 10 BC Fire Extinguisher, Carbon Monoxide, Smoke Detectors  
 High Definition Component Wiring  
 Bluetooth Microphone for Dash Radio  
 Rear View Color Monitor System with Audio

# STANDARD FEATURES & OPTIONS (CONTINUED)

- \_\_\_\_\_  
Satellite Dish Prep on Roof
- \_\_\_\_\_  
Bose® Sound System Soundbar
- \_\_\_\_\_  
TV Jack And 110V Recept in Door-Side Exterior Storage Compartment
- \_\_\_\_\_  
32" Samsung® LED TV in Garage Area
- \_\_\_\_\_  
Samsung® LED TV in Living and Bedroom Areas (TV Sizes Vary Per Floor Plan)
- \_\_\_\_\_  
Xite Dash Radio with Apple CarPlay®, 9" Dual Monitors with Nav-N-Go Navigation System
- \_\_\_\_\_  
Starlink Internet System (Subscription Required)

OPTIONS
<input type="checkbox"/> Exterior Entertainment Center in Storage Compartment with 43" Samsung® 4K LED TV and Bose® Soundbar
<input type="checkbox"/> SiriusXM® Radio Capability with Antenna (Does Not Include Monthly Subscription)
<input type="checkbox"/> Starlink High-Performance Internet System (Subscription Required)
<input type="checkbox"/> 43" Samsung® 4K LED TV in Front Overhead
<input type="checkbox"/> WiFi System Everest with Aspen Interior Router
<input type="checkbox"/> Winegard® Rayzar Automatic Digital TV Antenna

# OUR PARTNERS

## THE NEWMAR DIFFERENCE™

The Newmar Difference™ begins with suppliers dedicated to providing our customers with unrivaled quality, comfort, and support. We only work with suppliers that are dedicated to providing our customers with unrivaled innovation, comfort, and reliability. It's all so you can experience best-in-class performance from names you can trust. At Newmar, that's our difference, and our promise.



### BASF

The Coatings division of BASF is a global expert in the development and production of innovative and sustainable OEM and refinish coatings. Coatings by BASF—solutions beyond your imagination.



### Freightliner® Custom Chassis

Freightliner® Custom Chassis are renowned for their exceptional ride, excellent maneuverability, advanced technology, and nationwide 24/7 factory-direct support.



### Spartan® RV Chassis

An American company with over 40 years of experience in designing and manufacturing the premier motorhome chassis, Spartan® delivers superior performance, exceptional safety ratings, and industry-leading technology.



### Industrial Finishes

Industrial Finishes has supported RV manufacturers for over four decades, offering paint products that deliver uncompromising quality and provide your coach with a true Masterpiece™ finish.



### RiverPark

From Samsung® 4K TVs and Xite Infotainment systems to Bose® soundbars and JBL and Infinity premium audio systems, RiverPark helps ensure you enjoy the ultimate audio-visual technology in your Newmar coach.

# THE NEWMAR CUSTOMER EXPERIENCE

The Newmar Difference™ goes beyond our industry-leading motor coaches to provide you with an unrivaled ownership experience.



## Crafted with Purpose

Every Newmar is crafted one at a time by folks who have spent an average of eight years building them. Each coach we assemble must undergo more than 1,000 tests and checks before ever leaving our factory.



## The Highest Standards

We view our dealership network in terms of quality, not quantity. Each of our dealers acts as a partner in our shared mission to exceed your highest of expectations, for an ownership experience that's second to none from day one.



## Built Around You

As a Newmar owner, you'll find resources specific to your coach through Newgle, an easy-to-use knowledge base that houses everything from user guides to technical support documents.



## More Than a Number

Meet fellow owners through the Newmar Kountry Klub, a top social club for RV travelers that hosts rallies and other special events throughout the U.S. and Canada.



## Seamless Service

When you join the Newmar family, we pair you with a dedicated service specialist with expert knowledge of your exact coach. Our service specialists guarantee dealer warranty authorizations within four business hours and ship all in-stock parts the same day, free of charge.



## Without Compromise

All models include a one-year/unlimited mileage limited warranty and a five-year, non-transferable structural warranty that covers your coach's superstructure in the event it fails to perform. Ask your Newmar dealer for more details.

## CONTACT

Newmar Corporation  
1952 Cheyenne St.  
Nappanee, IN 46550

+ Phone: 574-773-7791  
+ Fax: 574-773-2895  
+ NewmarCorp.com

