



WHEN YOU KNOW THE DIFFERENCE™

09

KING AIRE



THE NEW ROYAL ORDER

Y ou can't help but marvel at the 2009 King Aire. Its regal style and unrivaled power command authority. A luxury coach unlike any the world has ever seen, this modern monarch is poised to rule the next generation.







LEAD THE COUNTER COUTURE



King Aire's chic simplicity is worthy of its loyal following. As soon as your guests ring the doorbell and ascend the lighted power stepwell, they'll notice its stylistic difference. The elegant fabrics, Ultrasuede furniture and high-gloss cabinetry are all elegantly understated.

People will talk, especially about your impressive entertainment center. The Sony® LCD TV, Pioneer® DVD player and optional Bose® Surround Sound system with a pre-programmed universal remote control is best experienced when the dual power window blackout shades come down.



BORN INTO THE
RULING CLASS



King Aire heads an elite family of Newmar coaches. Highly regarded for its superior construction, this coach rests upon a Spartan® K3, the strongest chassis ever created.

See the aluminum wheels, chrome convex mirrors and one-piece windshield that adorn the exterior? King Aire beams. The Full-Paint Masterpiece™ Finish shimmers under the durable Super Clear Coat and Paint Protection.



Sparkle, shine, King Aire's kitchen is simply divine. Run your fingertips along the glossy cabinets and notice the unmistakable quality of their handcrafted hardwood. The thrill of owning cabinets complete with polished Corian® countertops, deep storage space and adjustable shelves won't be lost on you.

Meals transform into memorable experiences when prepared in this all-electric kitchen. Residential stainless appliances are top-of-the-line, including the French three-door refrigerator with icemaker and water dispenser. And your GE® Profile™ Advantium® microwave oven bakes, cooks and reheats in one-third of the time.



ALL THAT GLITTERS IS
GOURMET



YOU WERE DESTINED
FOR ULTIMATE
CONTROL



Spark the ignition and King Aire's engine roars. You activate the powerful punch of its Cummins® ISX 650 Hp engine, a heavyweight you'd expect inside a performance vehicle. Smooth and assured aptly describe this coach's handling. Nothing compares to the velvety Comfort Drive™ Steering, a Newmar exclusive that makes turning, backing up and changing lanes feel incredibly simple.

Intelligent in-dash technology keeps you alert with 7" dual screen monitors that feature TripTek®, rearview and sideview camera displays and SIRIUS® Satellite Radio. Its Garmin® navigation system even comes with service center locations pre-programmed.



Take a moment to absorb the quiet elegance of your new favorite space—the master bedroom. Just don't let its clean lines fool you. This haven abounds with cozy amenities, such as the King-Sized Bed's optional Comfortaire mattress. Air chamber technology lets you and your partner each adjust its firmness to your desired comfort level. You'll never want to sleep on another mattress again.

Even if you aren't ready for bedtime, this space creates a sublime atmosphere for relaxing, especially with your Sony® 40" LCD TV and Bose® Wave® sound system. Settle back, close the decorative pocket door and call it a night.

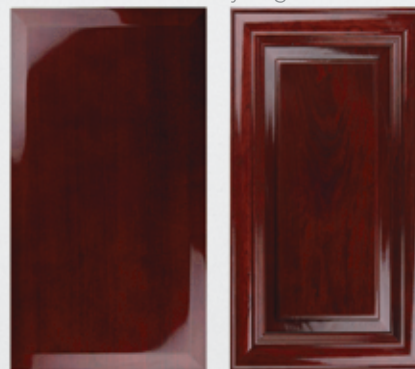


COMFORT REVOLVES AROUND YOU

DÉCOR & EXTERIORS

King Aire's six hardwood cabinet options pair well with any of the color combinations below. Choose from either the standard contemporary flat-panel or optional raised-panel cabinet doors.

Camden Cherry High Gloss



Flat Panel

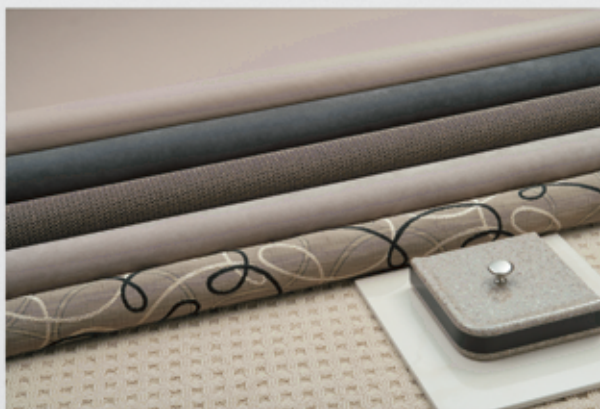
Raised Panel

Cashmere Maple High Gloss



Flat Panel

Raised Panel



CINNABAR



FLINT



JAVA

Ginger Glazed Cherry High Gloss



Flat Panel



Raised Panel

Natural Cherry High Gloss



Flat Panel



Raised Panel

Soho Cherry High Gloss



Flat Panel



Raised Panel

Suede Glazed Maple



Flat Panel



Raised Panel



PEARL



TUXEDO



WATERCRESS

2009 KING AIRE FEATURES

STANDARD FEATURES

CHASSIS FEATURES

Spartan® K3 Chassis with IFS
Cummins® ISX 650 Hp
Allison® 4000 MH Transmission
Tag Axle
Automatic Traction Control
Comfort Drive™ Steering with Power Column and Adjustable Control
Accuride® ACCU-SHIELD™ Non-Polish Aluminum Wheels
HWH® Four-Point Hydraulic Jacks with Single Touch Control and Chassis Air Leveling
Power Tilt and Telescope VIP Smart Wheel® with Black Leather Memory Settings for Driver's Seat, Pedals, Steering Wheel and Exterior Mirrors
Cruise Control
Recessed Fuel Fills with Crossover to Fill from Either Side
Back-Up Alarm
Anti-Lock Braking System
Front and Rear Tag Disc Brakes
Electronic Chassis Information Display in Dash
Tire Pressure Monitor System
Chassis Service Center
Leece-Neville 200-Amp Alternator
200-Gallon Fuel Tank
55-Degree Cramp Angle

AIR CONDITIONING AND HEATING

Three 15M Penguin™ Heat Pump Central Air Conditioners with Remote Control Thermostat
Hydronic Zone Heating System
Dash Heater and High-Output Air Conditioner
Propane Leak Detector
Roof Air Conditioning Drainage System

APPLIANCES AND ACCESSORIES

GE® 30" Profile™ Advantium® Microwave Oven
Two-Burner Recessed Gas Cooktop
Polished Corian® Range Cover
Norcold® 17 Cu.Ft. Four-Door Refrigerator with Auto Defrost, Ice maker and Water Dispenser
Norcold® Freezer on Pullout Tray
Washer/Dryer Prep*
Sony® 52" LCD TV in Living Area*
Sony® 40" LCD TV in Living Area*

Sony® 40" LCD TV in Bedroom
TripTek™ Electronic Travel Information (Displayed on Rearview Monitor)
Video Security Cameras with Monitor
Surround Sound System with CD and Pioneer® DVD Player
Exterior Entertainment Center with Sony® 32" LCD TV and AM/FM Radio with CD Player
Bose® Wave® Radio with CD Player and Alarm Clock in Bedroom
TV Antenna with Power Lift, One Exterior Jack and Two Interior Jacks
"TV Antenna Is Up" Warning Signal
Garmin® Navigation System Displayed on Dash Touch Screen Monitor
Kenwood® AM/FM/SIRIUS® Satellite Radio-ready with MP3 Adapter and Six-Disc CD Player (Does Not Include SIRIUS® Monthly Subscription)
Satellite Prep—Phone, TV Jack and Receptacle
Telephone Connection with Phone Jacks in Living Area and Dash Area
Air Horns
8.5" x 11" Safe
Pre-programmed Universal Remote Control
Central Vacuum with Deluxe Tool Kit
Audio/Video Smart-Source Switch Box with Remote Control
Cable TV Connection with Rg6 Coax
High Definition Component Wiring and HD-ready Video Switching System
Sony® DVD Player in Bedroom
10 Bc Fire Extinguisher, and Carbon Monoxide and Smoke Detectors

CABINETS AND FURNITURE

Natural Cherry High-Gloss Hardwood Unitized Cabinets with Fully Overlayed Cabinet Doors
Hidden Leaf-Dinette Table with Corian® Top and Four Chairs (Two Fixed, Two Folding)*
Polished Corian® Countertop in Kitchen with Undermounted Stainless Steel Sink and Flush Sink Covers
Polished Corian® Countertop in Bathroom with Integrated Bowl (Vessel Sink in Rear Baths)
Polished Corian® Countertop on Bedroom Nightstands
Adjustable Pullout Pantry Shelves*
Residential Style Full Extension Self-Closing Drawer Guides
Drawers with Dovetailed Sides and Beech Bottoms
Concealed Hinges on Cabinet Doors
Villa™ Furniture

Ultraleather/Vinyl Heated Driver Seat with Eight-Way Power, Power Lumbar and Power Recline
Ultraleather/Vinyl Heated Oversized Passenger Seat with Eight-Way Power, Power Lumbar, Power Recline and Power Footrest
Lifts on Bed Top to Access Storage Area
Cedar Paneling in Rear Wardrobe
Carpeted Wardrobe Bottoms with Pearl Cream Headliner on Shelves and Overhead Cabinet
Storage Shelves Recessed into Rear Cap of Rear Wardrobe Floorplans
Turn-Free Radius Cornered Mattress with Quilted Bedspread, Matching Bed Skirt, Accent Pillows
King Bed with Hardwood Bed Base

ELECTRICAL FEATURES

12.5 kW Cummins Onan® Diesel Quiet Generator on Hydraulic Slide and Auto Changeover
50-Amp Electrical Service with Flexible Cord on Power Cord Rewind Reel
Four AGM House Batteries on Pullout Tray
Battery Disconnect Switch
110-Volt Exterior Receptacle
Exterior TV Jack
5-Watt Solar Panel
2,800-Watt Pure Sine-Wave Inverter with Automatic Generator Start
Multi-Plex Electrical System
Emergency Start Switch
Exterior Security Lights on Each Side
Midship Side Turn Signals
Recessed Docking Lights
Switched Receptacle for Engine Block Heater
Recessed Halogen Lights in Ceiling and Overhead Cabinets
Lighted Wardrobes with Automatic Switches
Slideout Information Voice Module
Manually Operated Hold-to-Run Slideout Switch
ICC Light Flasher Switch
Two 12-Volt Auxiliary Receptacles on Dashboard
Interior Courtesy Lights
Mood Lights in Lambrequins, Kitchen Valance and Bed Base
Daylight Headlight System

EXTERIOR FEATURES

Full-Paint Masterpiece™ Finish with Super Clear Coat and Front Protective Film
One-Piece Bonded Windshield

Convex Exterior Chrome Mirrors with Remote Control, Defrost and Turn Signals with Sideview Cameras
Entrance Door with Automatic Double Step
Dual Latch Front Door with Power Flush Stepwell Cover
Lighted Exterior Storage Compartments with Cargo Liner and Automatic On/Off Lights
Side-Hinged Baggage Doors
Power Locking Baggage Doors
15,000 lb. Towing Hitch with Two Extra 14-Gauge Wires
Lighted Acrylic Assist Handle at Entrance Door
Rear Protective Tow Guard with Stainless Steel Newmar Name Cutout
Holding Tank Levels Displayed in Exterior Water Works Compartment
Squeegee in Exterior Compartment
Undercoating
Mud Flaps

INTERIOR FEATURES

Sculpted Padded Vinyl Ceiling
Power Duo Day/Night Window Privacy Shades (Windshield and Driver/Passenger Side Windows)
Power Duo Day/Night Window Shade System throughout Living Area
Hardwood Fascia on Living Area Slideout
Polished Corian® Window Sills
Polished Porcelain Floor Tile in Kitchen, Bathroom and Main Living Area
Hardwood Interior Passage Doors
Deluxe Carpeting with High-Density Padding and Sculptured Carpet in Bedroom Area
Interior Assist Handle at Main Entrance Door
Power-Activated Sun Visors

PLUMBING AND BATH FEATURES

Demand Water System with AquaJet™ "ES" Pump
Sewage and Grey Holding-Tank Rinse
Thetford™ Aria Sculptured China Stool (Thetford™ Vacuum Flush Stool in Rear Baths)
Towel Bar, Tissue Holder, Towel Ring and Robe Hook
Exterior Convenience Wash Station—Hot/Cold Water, Soap and Towel Dispenser
Corian® Shower Walls with Ceramic Tile Inserts and Solid Surface Shower Pan
Three Monitor Panels (Two Inside and One Outside)
MANABLOC® Plumbing System

Monoplex Water-Pump Switches Located in Bathroom, Kitchen and Near Gate Valves
Auto Water-Fill System
Designer Faucets in Bathroom and Kitchen
Whole House Water Filter
Water Filter with Drink Dispenser at Kitchen Sink
Power Rewind Water-Hose Reel

CONSTRUCTION FEATURES

Power Lock Arms on All Slideout Rooms

WINDOWS, AWNINGS AND VENTS

Frameless, Double-Pane, Tinted Safety-Glass Windows
Fan-Tastic® Vent with Rain Sensor in Kitchen Area and Bathroom
Skylight in Bathroom*
Driver's-Side Power Window
Girard® Power Bedroom and Slideout Window Awnings
Two Girard® Integrated Power Box Side Awnings with Wind Sensor and Remote
Girard® Power Front Entrance Door Awning
Slideout Awning Covers
Keyless Entry with Doorbell and Touch Pad
Cockpit Overhead Ventilation System

OPTIONAL FEATURES

AIR CONDITIONING AND HEATING

Electric Heat under Floor Tile in Kitchen, Bath and Living Areas

APPLIANCES AND ACCESSORIES

One-Piece Washer/Dryer
Stackable Washer/240-Volt Dryer in Full-Length Cabinet*
Fisher & Paykel DishDrawer®
All-Electric Unit with Maytag® Refrigerator and Four Extra Batteries*
Sony® 32" LCD TV in Front Overhead Cabinet
Remote-Controlled Rearview Color Camera
King Dome In-Motion Satellite without Receiver
KVH R-6 In-Motion Satellite without Receiver
Extra Monitor for Navigation System on Passenger Side
Security System
CB Radio with Antenna
Bose® Lifestyle® 38 Surround Sound System

CABINETS AND FURNITURE

Suede Glazed Maple Hardwood Cabinets
Soho High-Gloss Cherry Hardwood Cabinets
Ginger Glazed High-Gloss Cherry Hardwood Cabinets
Cashmere High-Gloss Maple Hardwood Cabinets
Camden Cherry High-Gloss Hardwood Cabinets
Ultraleather Hide-A-Bed Sofa with Air Mattress/Dinette Ensemble with Two Folding Chairs*
Two Leather/Vinyl Recliners*
Comfortaire Air Mattress for Main Bed
Traditional Interior Styling Package: Cabinet Doors, Passage Doors, Slideout Fascia, Plumbing, Hardware and Sinks

ELECTRICAL FEATURES

Roof-Mounted Spot Light

EXTERIOR FEATURES

Large Storage Tray with Access from Either Side
Power Sliding Storage Tray

INTERIOR FEATURES

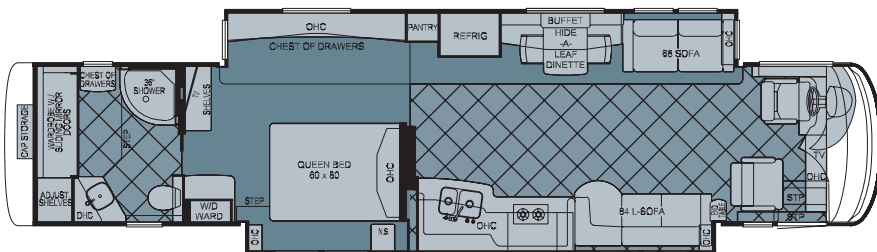
Power Silhouette Window Shades

PLUMBING AND BATH FEATURES

Assist Handle in Tub/Shower

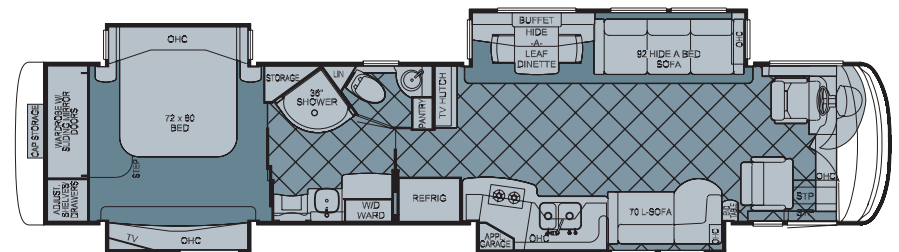
*CHECK WITH DEALERSHIP ON FLOORPLAN AVAILABILITY

KING AIRE FLOORPLANS



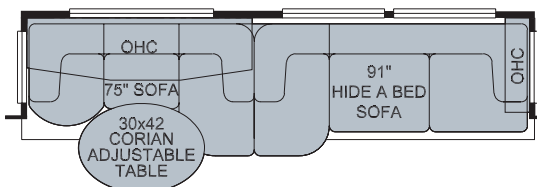
2009 King Aire Diesel Bus 4500

2009 King Aire Diesel Bus 4500

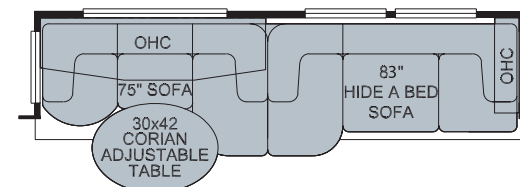


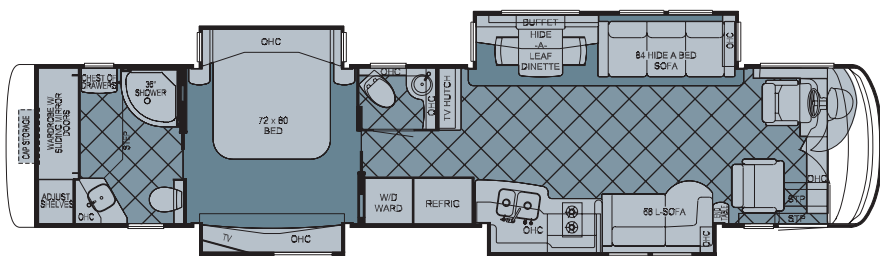
2009 King Aire Diesel Bus 4560

K331_KG1 Sofa/Dinette Combination:
KGDB 4560

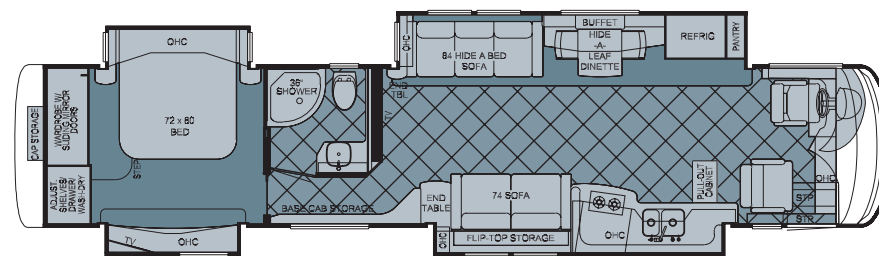


K331 Sofa/Dinette Combination:
KGDB 4561, 4566, 4567

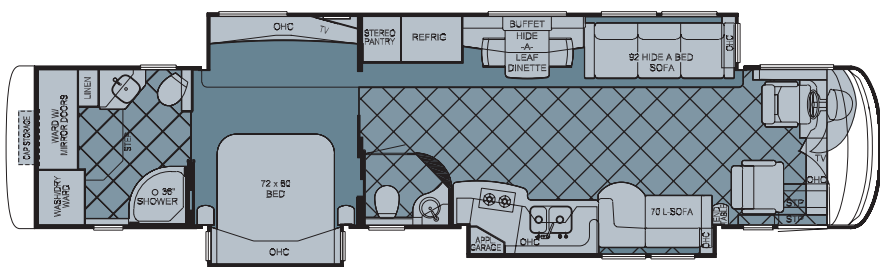




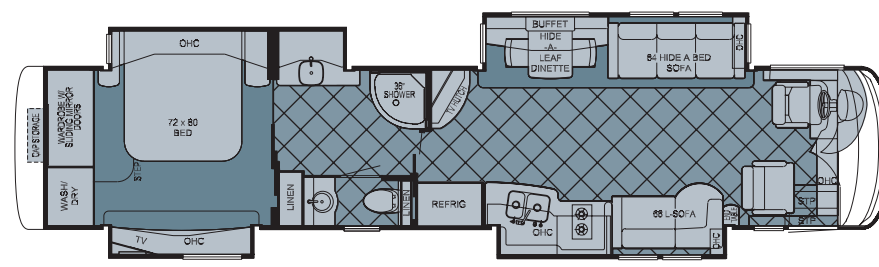
2009 King Aire Diesel Bus 4561



2009 King Aire Diesel Bus 4564

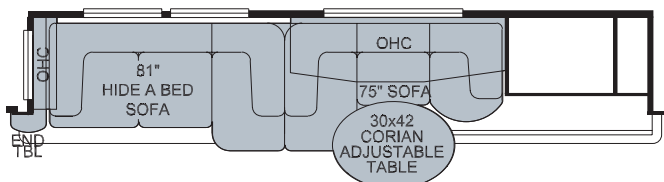


2009 King Aire Diesel Bus 4566

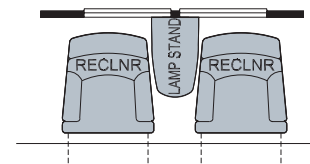


2009 King Aire Diesel Bus 4567

K331_KG3 Sofa/Dinette Combination:
KGDB 4564



K243 Two Recliners ILO Sofa:
KGDB 4560, 4561, 4564, 4566, 4567



KING AIRE CONSTRUCTION



When they built the K3, Spartan®'s engineering team threw conventional design out the window to create the strongest chassis ever built. The web of tubular truss frames and substructure support beams create a solid, stable foundation with extensive pass-through storage. The K3 offers a GVWR of 54,000 lbs., with a

14,000 lb. tag axle. The high GVWR and sound structural design allow OEMs to expand the coach beyond the chassis footprint, adding additional living space to the motor coach's interior. When you drive your coach built on a Spartan® K3 chassis, you can be confident that you have the most powerful, highest performing coach on the road.



Newmar Express Limited Warranty

Every King Aire Diesel Bus is backed by Newmar's two-year limited warranty/unlimited miles. Ask your Newmar dealer for details.

Limited Five-Year Structural Warranty

If any part of your Newmar recreational vehicle superstructure (which is the steel/aluminum structure of the sidewall, roof or frame) fails to perform properly within five years from the date of purchase because of faulty workmanship or material supplied by Newmar, it will be repaired without charge for either parts or labor by Newmar. This structural warranty is available only to the original purchaser and is non-transferable.



Roof R-Value = 16

- a. One-piece Molded Fiberglass Roof
- b. 9mm Wood Decking
- c. Fiberglass Batten Insulation
- d. A/C Ducting
- e. Aluminum Rafter Framing
- f. Kraft Paper Vapor Barrier
- g. 5/8" Bead Foam
- h. 3/16" Panel
- i. Padded Vinyl Overlay

Sidewall R-Value = 11

- j. 3/16" Plywood Interior Wall
- k. 5/8" Bead Foam
- l. Kraft Paper Vapor Barrier
- m. Fiberglass Batten Insulation
- n. 3/16" Plywood Exterior Wall
- o. Composite One-Piece Gelcoat Exterior Sidewall
- p. Aluminum Framing with 3 1/2" Header Above

Floor R-Value = 16

- q. Carpet/Tile
- r. Carpet Padding
- s. 5/8" Floor Decking
- t. Fiberglass Batten Insulation
- u. 2"x 3" Wood Framing
- v. Polyethylene Moisture Barrier
- w. Foam Panels (Noise Protection)
- x. Aluminum Ducting

Basement R-Value = 4

- y. Cargo Liner
 - z. 3/8" Floor Decking
 - aa. 3/16" Luan Panel
 - bb. 1 1/2" Bead Foam
 - cc. Aluminum Sheeting with Steel Support Rails to Prevent Bowing and Flexing
1. 15M Penguin™ Heat Pump Central Air Conditioners (3)
 2. One-Piece Bonded Windshield
 3. Coated Aluminum Wheels
 4. Frameless, Double-Pane, Tinted Safety-Glass Windows
 5. Side-Hinged Baggage Doors with Optional Pullout Tray

FLOORPLAN SPECIFICATIONS

FLOORPLAN	APP. OVERALL LENGTH	WIDTH	APP. OVERALL HEIGHT	INTERIOR WIDTH	INTERIOR HEIGHT	GREY	SEWAGE	WATER	PROPANE	FURNACE
4500	44' 11"	101.5"	13' 4"	95.5"	84"	80 gal.	60 gal.	140 gal.	32 gal.	55,000 Btu
4560	44' 11"	101.5"	13' 4"	95.5"	84"	80 gal.	60 gal.	140 gal.	32 gal.	55,000 Btu
4561	44' 11"	101.5"	13' 4"	95.5"	84"	80 gal.	60 gal.	140 gal.	32 gal.	55,000 Btu
4564	44' 11"	101.5"	13' 4"	95.5"	84"	80 gal.	60 gal.	140 gal.	32 gal.	55,000 Btu
4566	44' 11"	101.5"	13' 4"	95.5"	84"	80 gal.	60 gal.	140 gal.	32 gal.	55,000 Btu
4567	44' 11"	101.5"	13' 4"	95.5"	84"	80 gal.	60 gal.	140 gal.	32 gal.	55,000 Btu

SPARTAN® CHASSIS

FLOORPLAN	ENGINE HP	AXLE RATIO	FUEL CAP.	WHEEL- BASE	FRONT GAWR*	REAR GAWR*	TAG GAWR*	GVWR*	GCWR*	APP. UVW	APP. NCC
4500	650	430-1	200 gal.	294"+TAG	20,000 lb.	20,000 lb.	14,000 lb.	54,000 lb.	69,000 lb.	45,000 lb.	9,000 lb.
4560	650	430-1	200 gal.	294"+TAG	20,000 lb.	20,000 lb.	14,000 lb.	54,000 lb.	69,000 lb.	44,700 lb.	9,300 lb.
4561	650	430-1	200 gal.	294"+TAG	20,000 lb.	20,000 lb.	14,000 lb.	54,000 lb.	69,000 lb.	44,800 lb.	9,200 lb.
4564	650	430-1	200 gal.	294"+TAG	20,000 lb.	20,000 lb.	14,000 lb.	54,000 lb.	69,000 lb.	44,700 lb.	9,300 lb.
4566	650	430-1	200 gal.	294"+TAG	20,000 lb.	20,000 lb.	14,000 lb.	54,000 lb.	69,000 lb.	44,900 lb.	9,100 lb.
4567	650	430-1	200 gal.	294"+TAG	20,000 lb.	20,000 lb.	14,000 lb.	54,000 lb.	69,000 lb.	44,900 lb.	9,100 lb.

Lengths, heights, widths and dry weights are approximate. Weight will vary based on optional equipment added to the above base weight.

GAWR: Gross Axle Weight Rating is the maximum permissible weight for an axle.

GVWR: Gross Vehicle Weight Rating is the maximum permissible weight for a fully loaded motor coach.

GCWR: Gross Combination Weight Rating is the value specified by the manufacturer of the vehicle as the maximum allowable loaded weight of this motor coach and any towed trailer or towed vehicle.

UVW: Unloaded Vehicle Weight is the weight of this motor coach as built at the factory with full fuel, engine oil and coolants. The UVW does not include cargo, fresh water, propane gas or dealer-installed accessories.

NCC: Net Carrying Capacity is the maximum weight of all occupants, including the driver, personal belongings, food, fresh water, waste water, propane gas, tools, tongue weight of towed vehicle, dealer-installed accessories, etc., that can be carried by the motor coach.

*Specifications supplied by the chassis manufacturer.



(Please affix dealer stamp in this area.)

There's more to the

2009 KING AIRE

Visit www.newmarcorp.com

09



NEWMAR CORPORATION • 355 N DELAWARE ST • PO BOX 30 • NAPPANEE IN 46550-0030
574-773-7791 • Fax 574-773-2895 • www.newmarcorp.com