



*The 2009*  
***ALLSTAR***  
*Diesel Motorhome*



WHEN YOU KNOW THE DIFFERENCE<sup>SM</sup>







## THE NEWMAR DIFFERENCE



*Over the past 40 years, Newmar has created a heritage devoted to quality, innovation, luxury and Amish craftsmanship.*

*Newmar products incorporate sound construction principles, such as the leveled and squared chassis, sub-floor structure that is integrated and welded to the chassis rail and insulation that makes them easy to heat and cool. We use innovative technologies, which include Comfort Drive® Steering, a real-world wiring system, and we test and weigh each vehicle to make sure it meets our high expectations. We also provide custom-built touches, like our hand-crafted cabinetry. With Newmar, you get the ultimate in luxury from a company that's dedicated to its roots and stands for the utmost in quality.*

ALLSTAR

NEWMAR

## COMPLEMENT YOUR LIFESTYLE

*Your active lifestyle deserves a motorhome offering all of the comforts of home—that's where the 2009 All Star shines. Its standard features and array of options create a welcoming environment—from the beautiful hand-crafted cabinetry and polished Corian® countertops to the soft Flexsteel® furniture—that's as pleasing to look at as it is to live in.*

*Shown in 4156 floorplan with Bali Blue Décor and Baltic Beech Cabinetry.*

### INTERIOR FEATURES

- A. Kitchen Features Rich Cabinetry and a 30" Convection Microwave Oven, Three-burner Cooktop and a Norcold® Refrigerator
- B. Day/Night Window Shade System
- C. Booth Dinette with Hardwood Tabletop









**ALLSTAR**



**NEWMAR**





A B



C



## REST AND RELAXATION



*After a full day of activity, the bedroom offers a cozy retreat for unwinding. A comfortable bed with a tufted mattress, bedspread with a reverse sham and accent pillow, an LCD television and generous cabinets for storing clothes and belongings come standard.*

*Shown in 4156 floorplan with Bali Blue Décor and Baltic Beech Cabinetry.*

### BEDROOM FEATURES

- A. Queen Bed and Day/Night Pleated Window Shades and Lambrequins
- B. Baltic Beech Cabinets with Raised-panel Doors
- C. 19-inch Flip-down LCD Television







B



B



B



## THE RIDE OF YOUR LIFE



*The All Star makes it easy to navigate and command the open road with standard features that include a rearview monitor system, electronic compass in the dash, cruise control and Comfort Drive™ steering.*



**Comfort Drive™**  
STEERING

*Comfort Drive steering reduces the driver's efforts behind the wheel and when controlling the coach in all situations. Parking, cornering and backing up are easier, due to improved maneuverability from automatically centering and correcting steering.*

## EXTERIOR & INTERIOR FEATURES

- A. Spacious Cockpit is Equipped with Comfort Drive Steering Adjustable Control
- B. Optional Dash Radio/CD Player Opens For Inserting and Ejecting CDs with Removable and Portable TomTom® Navigation System
- C. Hydronic Zone Propane Heating System (Optional)
- D. Exterior Entertainment Center with 26-inch LCD TV, AM/FM Radio and CD Player (Optional)
- E. Pass-through Exterior Storage (Floorplan-specific)

C



D



E







*Tailgater floorplan 4258 shown.*

## THE CHOICE IS YOURS



*Maybe you're a weekend warrior, a road-trip enthusiast or a dedicated sports fan. Or perhaps you have a hobby that keeps you on the go or a business you run from the road. Whatever active lifestyle you pursue, the All Star is ready to accommodate your every need. We offer several different floorplans to support various journeys and special adventures, and all come stocked with features and amenities that make you feel right at home—wherever your lifestyle takes you.*

IMAGINATION ROOM  
Pg. 11

TOY HAULER  
Pg. 12

TAILGATER  
Pg. 14

REVERSE FLOORPLAN  
Pg. 16



B



This floor plan illustrates the interior layout of a motorhome with a 21' awning size. The layout includes a front dinette with a table and four seats, a kitchen area with a refrigerator, sink, and stove, a bathroom with a toilet and shower, and a sleeping area with a queen bed and a flip-down LCD TV. Storage compartments are located throughout the unit, including under the bed and in the front. The plan also shows a front door with a step and a rear door with a step. The overall length of the motorhome is 21 feet.

**21' AWNING SIZE**


**Labels in the plan:**

- EXTENSIBLE STORAGE
- STEP
- SHORT WARD
- CHEST BOLING
- SHORT WARD
- SHORT WARD
- TOILET
- REFRIG
- SINK
- STOVE
- QUEEN BED 60x80
- FLIP-DOWN LCD TV
- Q 38x30 SHOWER
- DINETTE
- DINING TV
- EASY BED SW
- CAPTAIN SEAT
- STEP
- STEP

# ATME<sub>4156</sub>

Length: 41' 8"      **OPTIONS**      K010,  
Width: 101.5"      K540

**OPTIONS** K010,  
K540

 *Simulated Plank Flooring*

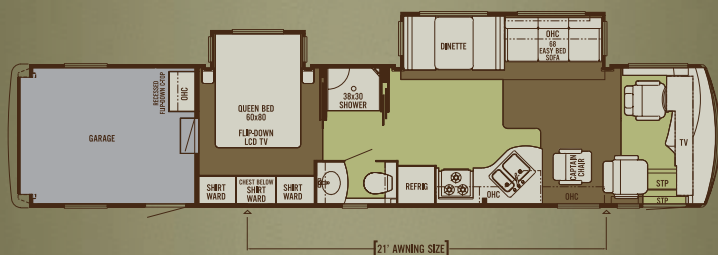
- A. Two Entrances—One from Inside and One from Outside the Motorhome
- B. Carpeting and Windows Create an Inviting Environment



## TOY HAULER

*The Toy Hauler provides a comfortable living area for you and a temperature-controlled garage for your favorite recreational toys.*

*Shown in 4257 floorplan with Fusion Exterior Paint Scheme.*



**ATME** 4257

Length: 41' 8"  
Width: 101.5"  
Garage Length: 10' 2"

**OPTIONS**

- K010, K540, K063
- Carpet
- Simulated Plank Flooring
- Rubber Diamond Plate

## INTERIOR FEATURES

- A. Shop Vacuum with Attachments
- B. 24-gallon Fuel Station (Floorplan-specific)



A B







*Cabinet with Storage Shelves and Optional  
Wheel Chocks for Keeping Toys in Place*

*Ramp Allows Easy Loading  
and Unloading*



*Exterior Features Include a Pullout, Swivel Grill, Storage Area for Coolers and a 52" LCD TV Exterior Entertainment Center*

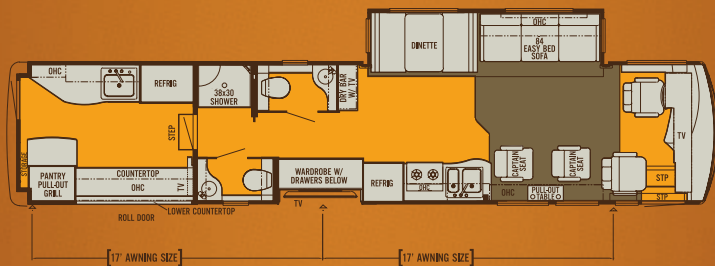


# THE TAILGATER



*With the Tailgater model, you can add style and convenience to your tailgating experiences as you support your favorite teams. Two awnings shield from the sun and elements, and the side opens up to provide easy access to tailgating essentials.*

*Shown in 4528 floorplan with Fusion Exterior Paint Scheme.*



**ATME** 4258

Length: 41' 8"  
Width: 101.5"

OPTIONS

K016, K540,  
K545

Carpet

Simulated Plank Flooring

## TAILGATER FEATURES

- A. Standard Features in the Kitchen Include a Norcold® Four-door Refrigerator, Titanium Cabinetry, 26-inch LCD TV, and 30 lb. Commercial Icemaker
- B. A Two-tiered Counter Provides Plenty of Space for a BBQ Spread

A



B



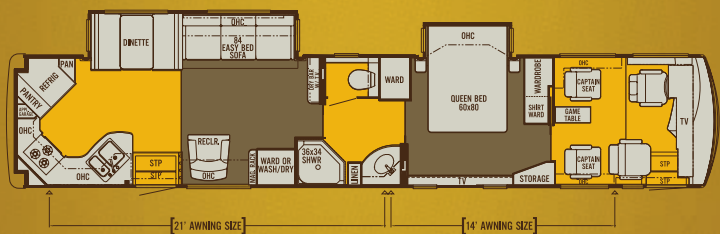


## REVERSE FLOORPLAN



*The Reverse Floorplan model changes things up a bit. The kitchen and living area are at the back of the motorhome, and the bedroom is near the front. It's an innovative and functional twist on the traditional motorhome setup. The cockpit doubles as a separate gathering area. It houses a cabinet, which converts into a table, and four captain seats that can be swiveled around the table, making it possible to engage in games and activities.*

*Shown in 4481 floorplan with Mysteria Décor and Ginger Maple Raised-panel Cabinetry.*



**ATME** 4481

Length: 44'9"  
Width: 101.5"

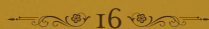
OPTIONS

K033, K034,  
K035, K540,  
K544

■ Carpet  
■ Simulated Plank Flooring

### INTERIOR FEATURES

- A. Cockpit Area with Ultraleather Driver and Passenger Seats
- B. Flip-up Table for Board Games and Other Activities
- C. Living Area with Flexsteel® Furniture and 26-inch LCD Television
- D. Rear Kitchen with Essential Appliances and Optional Round Hardwood Dinette Table with Fixed Chairs



I6











#### CEILINGS: R-VALUE=16

- a. BriteTEK™ Roof
- b. 9mm Wood Decking
- c. Fiberglass Batten Insulation
- d. A/C Ducting
- e. Aluminum Roof Truss
- f. Kraft Paper Vapor Barrier
- g. 5/8" Bead Foam
- h. 3/16" Panel
- i. Padded Vinyl Overlay

#### WALLS: R-VALUE=11

- j. 3/16" Plywood Interior Wall
- k. 5/8" Bead Foam
- l. Kraft Paper Vapor Barrier
- m. Fiberglass Batten Insulation
- n. 3/16" Plywood Exterior Wall
- o. Composite One-piece Gelcoat Exterior Sidewall
- p. 16" On-center Aluminum Framing with 3 1/2" Header

#### FLOORING: R-VALUE=16

- q. Carpet/Tile
- r. Carpet Padding
- s. 5/8" Floor Decking
- t. Fiberglass Batten Insulation
- u. 2" x 3" Wood Framing
- w. Foam Panels (Noise Protection)
- x. Aluminum Ducting

#### BASEMENT:

- R-VALUE=4**
- (INCLUDED IN FLOOR R-VALUE)
- y. Cargo Liner
- z. 3/8" Floor Decking
- aa. 3/16" Luan Panel
- bb. 1 1/2" Bead Foam
- cc. Aluminum Sheeting (Prevents Distortion)

- 1. 13.5M Penguin™ Heat Pump Central Air Conditioners (2)
- 2. One-piece Windshield
- 3. Coated Aluminum Wheels
- 4. Double-pane Tinted Safety-glass Windows
- 5. Side-hinged Baggage Doors

#### NEWMAR TOTAL COMFORT™ CENTRAL AIR CONDITIONING

Experience RV air conditioning just like that found in site-built homes. Newmar's Total Comfort Central Air Conditioning is actually two separate, fully ducted systems: one to distribute incoming cool air, the other to quickly and effectively remove warm air from every living area.



#### PROTECTED C-CHANNELS

To keep the electrical wiring that runs through holes in the aluminum-frame C-channels from chafing, each hole is ringed with a plastic grommet.

#### SIKAFLEX®

Used throughout Newmar construction, Sikaflex elastic adhesive is one of the strongest bonding agents on the market today. It also serves as a sealant against air and water. And it helps dampen both sound and vibration.

#### 16" ON-CENTER FRAMING

Just like a fine site-built residential home, your Newmar home is framed 16 inches on center, which allows the best placement of outlets, switches and other components.



BALI BLUE COLOR SCHEME

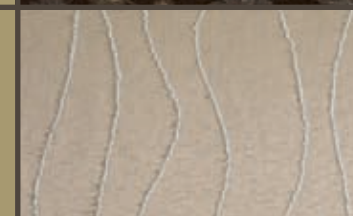
SOFA



DINETTE



BEDSPREAD



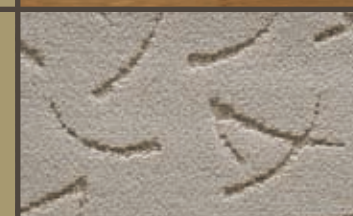
COUNTERTOP



STANDARD FLOORING



CARPET







**FUSION COLOR SCHEME**



**MYSTERIA COLOR SCHEME**



**REDWOOD COLOR SCHEME**



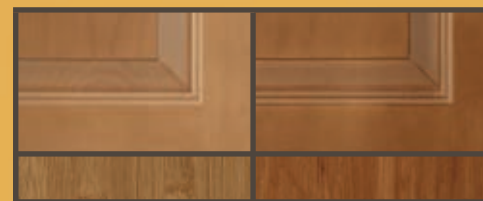
**SANDLEWOOD COLOR SCHEME**

**BALTIC BEECH  
CABINETRY  
WITH RAISED-PANEL  
DOORS**

*Standard, with Matching  
Simulated Plank Flooring*

**GINGER MAPLE  
HARDWOOD CABINETRY  
WITH RAISED-PANEL  
DOORS**

*Optional, with Matching  
Simulated Plank Flooring*

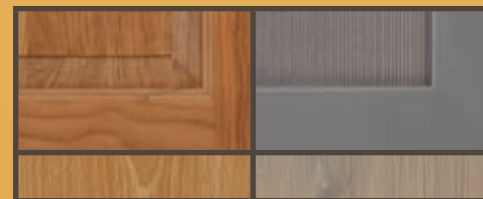


**COASTAL CHERRY  
HARDWOOD CABINETRY  
WITH RAISED-PANEL  
DOORS**

*Optional, with Matching  
Simulated Plank Flooring*

**TITANIUM CABINETRY**

*Optional, with Matching  
Simulated Plank Flooring*



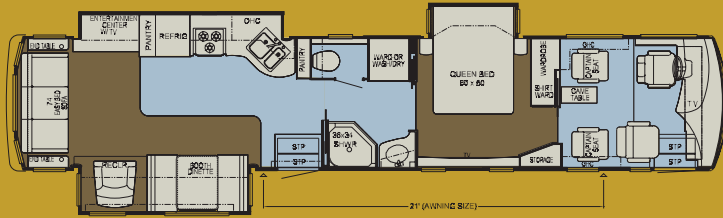
**CABINETRY HARDWARE**

Some features shown in our literature are optional. Colors and finishes are photographic representations. The actual materials may look different. Prices, specifications and floorplans are subject to change at Newmar's discretion, without prior notice or obligation. Please see your dealer for actual samples and specifications.

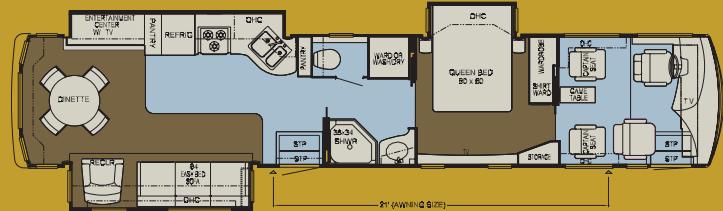


# FLOORPLANS AND OPTIONS

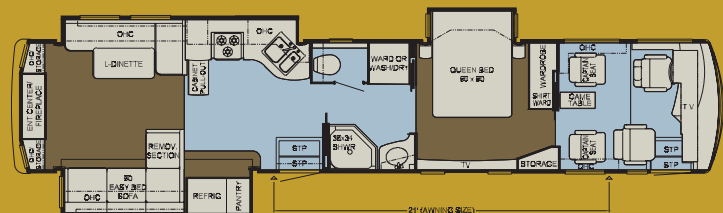
Additional floorplans located on pages 11, 12, 15 and 16.



**ATME 4480:** Length: 44' 9" Options: K013  
Width: 101.5" K540

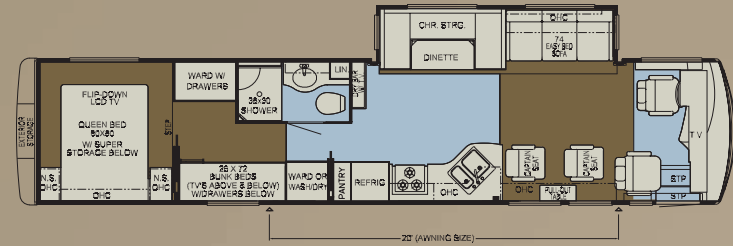


**ATME 4483:** Length: 44' 9"  
Width: 101.5"



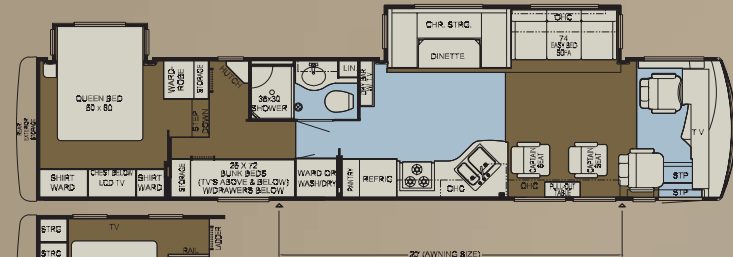
**ATME 4484:** Length: 44' 9"  
Width: 101.5"

REVERSE FLOORPLAN



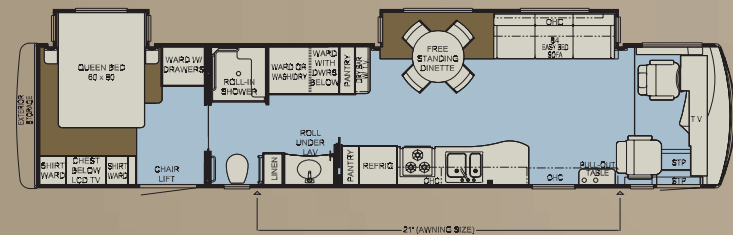
**ATME 4154:** Length: 41' 3"  
Width: 101.5"

Options: K013,  
K016, K274,  
K326, K329, K543



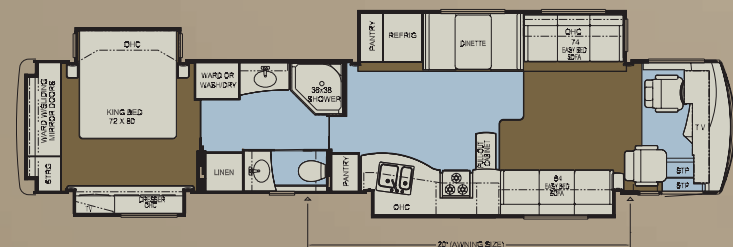
**ATME 4159:** Length: 41' 8"  
Width: 101.5"

Options: K013,  
K016, K274,  
K326, K543



**ATME 4188:** Length: 41' 8"  
Width: 101.5"

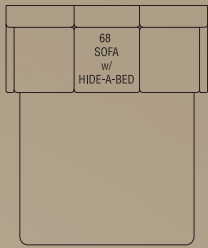
Wheelchair Accessible



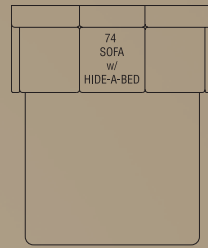
**ATME 4482:** Length: 44' 9"  
Width: 101.5"

Options: K013,  
K050, K540





**K010**  
68" Sofa Bed  
4156, 4257



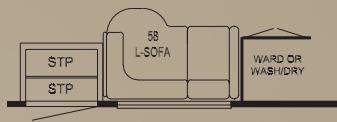
**K013**  
74" Sofa Bed  
4154, 4159, 4480, 4482



**K016**  
74" Sofa  
4154, 4159, 4258  
Not available in conjunction  
with K013.



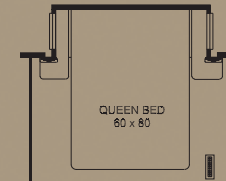
**K033**  
84" Sofa  
4481



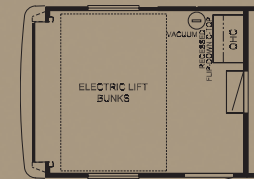
**K034**  
58" L-Sofa  
4481



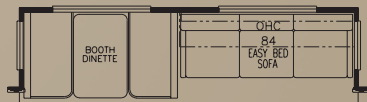
**K035**  
Entertainment Center & Dry Bar  
4481



**K050**  
Queen Bed  
4482



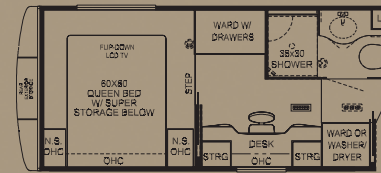
**K063**  
Queen Bed  
4257



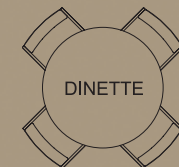
**K274**  
Booth Dinette with 84" Sofa  
4154, 4159



**K326**  
Desk  
4154, 4159



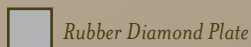
**K329**  
Desk  
4154



**K540**  
Round Dinette  
4156, 4257, 4258, 4480,  
4481, 4482



Carpet



Rubber Diamond Plate



Simulated Plank Flooring



**K543**  
Round Dinette with 84" Sofa  
4154, 4159



**K544**  
74" Sofa with Dinette  
4481



**K545**  
Dinette with 74" Sofa  
4258

# STANDARD FEATURES

## CHASSIS FEATURES

- Spartan® Mountain Master ME Chassis
- Cummins® ISC 360 hp\*
- Cummins® ISL 400 hp\*
- Two-stage Compression Brake
- Coated Aluminum Wheels
- Electric Leveling Jacks with Automatic Control
- Cruise Control
- Comfort Drive™ Steering with Adjustable Control
- Manual Tilt-and-Telescope Steering Column with VIP Smart Wheel
- Recessed Fuel Fills with Crossover to Fill from Either Side
- Back-up Alarm
- Anti-lock Braking System

## AIR CONDITIONING & HEATING

- Two 13.5M Penguin™ Heat Pump Air Conditioners
- Additional 13.5M Penguin™ Air Conditioner with Heat Strip in Tailgate Area\*
- Propane Furnace with In-floor Ducted Heat
- Dash Heater and High-output Air Conditioner
- Propane Leak Detector
- Wall-mounted Sensors for Heating and Air Conditioning

## APPLIANCES & ACCESSORIES

- 30" Convection Microwave Oven
- Three-burner Cooktop with Piezo Ignition
- Polished Corian® Range Cover
- Norcold® 10 cu. ft. Refrigerator with Molded Contemporary Doors
- Tailgate Unit Kitchen:\*
- 22" Convection Microwave
- Norcold® Four-door Refrigerator with Icemaker
- 30 lb. Commercial Icemaker
- Two-burner Electric Cooktop
- Stainless Steel Countertops
- 10 gal. Gas/Electric Water Heater with Direct-spark Ignition
- One-piece Washer/Dryer Prep\*
- 52" LCD TV in Exterior Entertainment Center\*
- 26" or 32" LCD TV in Living Area\*
- 46" LCD TV at Fireplace\*
- 26" LCD TV in Tailgate Kitchen\*
- 26" LCD TV in Bedroom\*
- 19" Flip-down LCD TV in Bedroom\*
- 10" Flip-down LCD TV/DVD and Headphones at Each Bunk Bed\*
- AM/FM Dash Radio with MP3 Adapter and CD Player
- Surround Sound Home Theater System\* with Single-disc DVD Player
- Second Surround System\*
- Simulated Stone Entertainment Center and Fireplace\*
- DVD Player in Bedroom\*
- (n/a in Units with Two Surround Systems)
- Rearview Monitor System
- Electronic Compass and Temperature Display in Dash
- TV Antenna with Power Booster and Two Interior Jacks
- TV Antenna "UP" Warning Signal
- Satellite Prep—Phone, TV Jack and Receptacle
- Cable TV Connection with Rg6 Coax
- High-definition Wiring with Selector Switch
- Telephone Connection with Phone Jacks in Living and Cockpit Area
- Two Bedroom Radio Speakers with On/Off Switch
- Roof-mounted Air Horns

- 10 Bc Fire Extinguisher, Carbon Monoxide and Smoke Detectors
- Shop Vac\* (Garage Floorplans)

## CABINETS & FURNITURE

- Baltic Beech Cabinetry with Raised-panel Doors
- Titanium Cabinetry in Tailgate Kitchen\*
- Booth Dinette with Hardwood Tabletop\*
- Polished Corian® Countertop in Kitchen with Undermounted Acrylic Sink and Flush Sink Covers
- Corian Countertop in Bathroom with Integrated Sink
- Corian Countertops Throughout Unit
- Round Hardwood Dinette Table with Four Fixed Chairs\*
- Adjustable Pullout Pantry Shelves\*
- Residential-style Full-extension Ball-bearing Drawer Guides
- Flexsteel® Furniture
- Ultraleather Driver/Passenger Seats with Six-way Power, Power Lumbar, Ergo-Flex Arms
- Lifts on Bed Top to Access Storage Area\*
- Tufted Mattress with Quilted Bedspread, Shams and Accent Pillows in Upgraded Décors
- Tufted Mattress with Reverse Sham Bedspread and Accent Pillow in Bali Blue and Redwood Décors
- Pullout Step-stool with Storage in Bathroom Cabinet\*

## ELECTRICAL FEATURES

- 8.0 kW Cummins Onan® Diesel Quiet Series Generator
- 50 Amp Electrical Service with Flexible Cord
- Four 6 Volt House Batteries
- Battery Disconnect Switch
- 110 Volt Exterior Receptacle
- 5 Watt Solar Panel
- 2000 Watt Inverter
- Emergency Start Switch
- Exterior Security Light on Doorside
- Midship Side Turn Signals
- Fluorescent Lights in Ceiling and Overhead Cabinets
- Slideout Information Voice Module
- Manually Operated Hold-to-Run Slideout Switch
- ICC Light Flasher Switch
- 12 Volt Auxiliary Receptacle on Dashboard
- Exterior TV Jack
- Interior Courtesy Lights

## EXTERIOR FEATURES

- Full-Paint Masterpiece Finish™ with Front Protective Film
- One-piece Windshield
- Two Flip-up Flag Poles on Roof\* (Tailgate Unit)
- Convex Exterior Mirrors with Remote Control, Defrost and Turn Signals
- Front Entrance Door with Automatic Double Step
- Power Flush Stepwell Cover at Front Entrance Door
- Automatic Double Step at Garage Side Door\*
- Lighted Exterior Storage Compartments with Cargo Liner Controlled by Interior Master Switch
- 8,000 lb. Towing Hitch with Two Extra 14 Gauge Wires
- Lighted Acrylic Assist Handle at Entrance Door
- Rear Protective Full-width Tow Guard
- Braun® Wheelchair Lift\*
- Rear Ladder
- Undercoating
- Mud Flaps
- Water Spray Hose\*
- 24 gal. Fuel Dispenser\*
- Jenn Air® Propane Grill on Pullout Slide, Collapsible Trash Can, Extra Recepts and Storage for Cooler/Folding Table\* (Tailgate Unit)

## INTERIOR FEATURES

- Padded Vinyl Ceiling
- Day/Night Pleated Window Shades and Lambrequins
- Mini-blinds in Kitchen and Bathroom
- Simulated Plank Floor in Kitchen, Bathroom and Entrance Area in Bali Blue and Redwood Décors
- Ceramic Tile Floor in Kitchen, Bathroom and Living Area in Upgraded Décors
- Deluxe Carpeting with High-density Padding in Living Room and Bedroom
- Flat-panel Interior Passage Doors
- Interior Assist Handle at Main Entrance Door
- Manual Duo Day/Night Privacy Windshield Shade and Driver/Passenger Side Windows
- Bedspreads for Bunk Beds\*
- Recessed Flip-down Countertop in Garage\*
- Tie-down Track on Garage Floor\*

## PLUMBING & BATH FEATURES

- Demand Water System with SHURflo® Pump
- Sewage Holding-tank Rinse
- Water Heater Bypass System
- Thetford™ Vacuum Flush Stool (Two on Tailgate Unit)
- Fiberglass Bathtub/Shower with Glass Shower Door
- Wheelchair Accessible Roll-in Shower\*
- Monitor Panel
- Water Pump Switches Located in Bathroom, Kitchen and Exterior Near Gate Valves
- Exterior Shower
- Water Filter with Drink Dispenser at Kitchen Sink
- Water Filter for Entire Unit
- Cold Water Exterior Faucet with 15' Coil Hose and Sprayer\* (Tailgate Unit)

## WINDOWS, AWNINGS & VENTS

- Double-pane Tinted Safety-glass Windows
- Fan-Tastic® Vent with Rain Sensor in Kitchen and Bathroom Areas
- Skylight in Bathroom\*
- A&E® 9000 Side Awning (Two on Certain Floorplans)
- A&E Oasis Manual Front Entrance Door Awning
- Two Girard Power Side Awnings and Oasis Power Front Door Awning\* (Tailgate Unit)
- A&E Slideout Awning Covers
- Cockpit Overhead Ventilation System

# OPTIONAL FEATURES

## AIR CONDITIONING & HEATING

- Two 15M Penguin™ Heat Pump Central Air Conditioners
- 13.5M Penguin™ Air Conditioner with Heat Strip and Energy Management System in Garage Area\*
- Hydronic Zone Propane Heating System

## APPLIANCES & ACCESSORIES

- Norcold® 12 cu. ft. Four-door Refrigerator with Icemaker
- Norcold 1.7 cu. ft. Refrigerator in Cockpit Area\*
- Icemaker Added to Refrigerator\*
- One-piece Washer/Dryer\*
- Two-piece Washer/Dryer\*
- SIRIUS® Satellite Radio Capability (Does not include monthly subscription)

- External Entertainment Center with 26" LCD TV AM/FM Radio and CD Player
- Automatic Satellite without Receiver
- In-motion Satellite without Receiver
- Sideview Cameras
- CB Radio with Antenna
- CB Antenna
- Central Vacuum with Deluxe Tool Kit
- Dash Radio/CD Player with Portable TomTom® Navigation System and MP3 Adapter
- Pre-programmed Universal Remote Control

## CABINETS & FURNITURE

- Coastal Cherry Hardwood Cabinets
- Ginger Maple Hardwood Cabinets
- Titanium Cabinetry
- Booth Dinette with Seat Belts and Ultraleather Sofa
- Dinette with Ultraleather Sofa\*
- Ultraleather Hide-a-Bed\*
- Ultraleather Hide-a-Bed with Air Mattress\*
- Ultraleather Sofa\*
- Ultraleather Easy Bed Sofa\*
- Ultraleather L-lounge\*
- Round Hardwood Dinette Table with Four Fixed Chairs and Larger Dinette Window and Sofa\*
- Round Hardwood Dinette Table with Four Fixed Chairs and Larger Dinette Window\*
- Desk with Fixed Chair\*
- Desk in Place of Bunk Beds\*
- Bunk Beds with Electric Bed Lift in Garage\*
- Comfortaire® Air Mattress (Main Bed)

## EXTERIOR FEATURES

- Large Chrome Exterior Mirrors
- Hydraulic Leveling Jacks with Single Touch Control
- Large Storage Tray with Access from Either Side\*
- Wheel Chocks in Garage Area\* (Two)
- Power Stepwell Cover at Rear Entrance Door\*

## INTERIOR FEATURES

- Upgraded Interior Package: Ceramic Tile Floors in Kitchen, Bath and Living Area; Polished Solid Surface Countertops and Furniture Tops (not dinette table or flipper table); Deluxe Interior Fabrics and Light Fixtures
- Custom Area Rug Over Engine Cover
- Power-activated Sun Visors
- Ceramic Tile Floor
- Snap Blinds in Garage\*
- (Only Available with Electric Bed Lift Option)

## PLUMBING & BATH FEATURES

- 110 Volt Heat Pads for Holding Tanks

## CONSTRUCTION FEATURES

- Power Lock Arms\*

## WINDOWS, AWNINGS & VENTS

- A&E® 9000 Bedroom and Slideout Window Awning
- A&E Weather Pro Side Awning and Oasis Power Front Entrance Door Awning
- Two A&E Weather Pro Side Awning and Oasis Power Front Entrance Door Awning\* (Tailgate Unit)
- Screen for Rear Cargo Door\*

\* CHECK DEALERSHIP FOR FLOORPLAN AVAILABILITY.



## FLOORPLAN SPECIFICATIONS

FLOORPLAN	APP. OVERALL LENGTH¹	WIDTH	APP. OVERALL HEIGHT	INTERIOR WIDTH	INTERIOR HEIGHT	GREY	SEWAGE	WATER	PROPANE	FURNACE	WATER HEATER
ATME 4154	41' 3"	101.5"	12' 10"	95.5"	84"	65 gal.	45 gal.	105 gal.	30 gal.	42,000 Btu	10 gal.
ATME 4156	41' 8"	101.5"	12' 10"	95.5"	84"	65 gal.	45 gal.	105 gal.	30 gal.	42,000 Btu	10 gal.
ATME 4159	41' 8"	101.5"	12' 10"	95.5"	84"	65 gal.	45 gal.	105 gal.	30 gal.	42,000 Btu	10 gal.
ATME 4188	41' 8"	101.5"	12' 10"	95.5"	84"	110 gal.	45 gal.	105 gal.	30 gal.	42,000 Btu	10 gal.
ATME 4257	41' 8"	101.5"	12' 10"	95.5"	84"	65 gal.	45 gal.	105 gal.	30 gal.	35,000 Btu	10 gal.
ATME 4258	41' 8"	101.5"	12' 10"	95.5"	84"	65 gal.	45 gal.	135 gal.	30 gal.	55,000 Btu	10 gal.
ATME 4480	44' 9"	101.5"	12' 10"	95.5"	84"	65 gal.	45 gal.	105 gal.	30 gal.	42,000 Btu	10 gal.
ATME 4481	44' 9"	101.5"	12' 10"	95.5"	84"	110 gal.	45 gal.	105 gal.	30 gal.	42,000 Btu	10 gal.
ATME 4482	44' 9"	101.5"	12' 10"	95.5"	84"	65 gal.	45 gal.	105 gal.	30 gal.	42,000 Btu	10 gal.
ATME 4483	44' 9"	101.5"	12' 10"	95.5"	84"	65 gal.	45 gal.	105 gal.	30 gal.	42,000 Btu	10 gal.
ATME 4484	44' 9"	101.5"	12' 10"	95.5"	84"	65 gal.	45 gal.	105 gal.	30 gal.	42,000 Btu	10 gal.

## Spartan® Chassis Information

FLOORPLAN	ENGINE HP	AXLE RATIO	FUEL CAP.	WHEELBASE	FRONT GAWR²	REAR GAWR²	GVWR²	GCWR²	APP. UVW	APP. NCC
ATME 4154	360	4.88	100 gal.	252"	14,500 lb.	20,000 lb.	34,500 lb.	42,500 lb.	27,800 lb.	6,700 lb.
ATME 4156	400	4.88	100 gal.	252"	14,500 lb.	20,000 lb.	34,500 lb.	42,500 lb.	29,300 lb.	5,200 lb.
ATME 4159	400	4.88	100 gal.	252"	14,500 lb.	20,000 lb.	34,500 lb.	42,500 lb.	28,400 lb.	6,100 lb.
ATME 4188	400	4.88	100 gal.	252"	14,500 lb.	20,000 lb.	34,500 lb.	42,500 lb.	29,700 lb.	4,800 lb.
ATME 4257	400	4.88	100 gal.	252"	14,500 lb.	20,000 lb.	34,500 lb.	42,500 lb.	27,500 lb.	7,000 lb.
ATME 4258	400	4.88	100 gal.	252"	14,500 lb.	20,000 lb.	34,500 lb.	42,500 lb.	28,900 lb.	5,600 lb.
ATME 4480	400	4.88	100 gal.	288"	14,000 lb.	20,000 lb.	34,000 lb.	42,000 lb.	29,200 lb.	4,800 lb.
ATME 4481	400	4.88	100 gal.	288"	14,000 lb.	20,000 lb.	34,000 lb.	42,000 lb.	28,700 lb.	5,800 lb.
ATME 4482	400	4.88	100 gal.	288"	14,000 lb.	20,000 lb.	34,000 lb.	42,000 lb.	29,300 lb.	4,700 lb.
ATME 4483	400	4.88	100 gal.	288"	14,000 lb.	20,000 lb.	34,000 lb.	42,000 lb.	29,000 lb.	5,000 lb.
ATME 4484	400	4.88	100 gal.	288"	14,000 lb.	20,000 lb.	34,000 lb.	42,000 lb.	29,300 lb.	4,700 lb.

### THE LIMITED FIVE-YEAR STRUCTURAL WARRANTY

If any part of your Newmar recreational vehicle superstructure (which is the steel/aluminum structure of the sidewall, roof or frame) fails to perform properly within five years, from the date of purchase, due to faulty workmanship or material supplied by Newmar, it will be repaired without charge for either parts or labor by Newmar. This structural warranty is available only to the original purchaser and is non-transferable.

### NEWMAR EXPRESS LIMITED WARRANTY

Every All Star Diesel is backed by Newmar's one-year limited warranty/unlimited miles. Ask your Newmar dealer for details.

### FULL-PAINT MASTERPIECE FINISH™

Newmar's Full-Paint Masterpiece Finish raises the exterior beauty and durability of our motorhomes to a whole new level. To obtain such rich-looking graphics, we use up to 16 gallons of paint on each unit, applying three coats each of primer, a base coat and color for graphics, and end with a final clear coat.

### SPARTAN® MID-ENGINE CHASSIS

Spartan has revolutionized the industry with the mid-engine chassis by moving the engine from the back to the middle. The new design expands floorplan options and improves driving performance. The mid-engine chassis allows for a perfectly balanced, stable ride, which is especially important when changing lanes and avoiding road debris. Plus, you'll experience the comfort of a quietly purring engine surrounded by state-of-the-art sound-insulating material. Maintenance is simplified with the side-mounted service center, where you can easily access the main chassis service components without any hassle. The mid-engine chassis provides excellent resale value and carries a 36-month, 50,000-mile, no-deductible warranty, which includes roadside assistance for the entire warranty period. So go ahead, share your adventures with the family without sacrificing a bit of comfort.



Lengths, heights, widths and dry weights are approximate. Weight will vary based on optional equipment added to the above base weight.

<sup>1</sup> Lengths do not include the rear ladder.

<sup>2</sup> Specifications are supplied by the chassis manufacturer.

**GAWR:** Gross Axle Weight Rating is the maximum permissible weight for an axle.

**GCWR:** Gross Combination Weight Rating is the value specified by the manufacturer of the vehicle as the maximum allowable loaded weight of this motorhome and any towed trailer or towed vehicle.

**GVWR:** Gross Vehicle Weight Rating is the maximum permissible weight of a fully loaded motorhome.

**UVW:** Unloaded Vehicle Weight is the weight of this motorhome as built at the factory with full fuel, engine oil and coolants. The UVW does not include cargo, fresh water, LP gas or dealer-installed accessories.

**NCC:** Net Carrying Capacity is the maximum weight of all occupants, including the driver, personal belongings, food, fresh water, waste water, LP gas, tools, tongue weight of towed vehicle, dealer-installed accessories, etc., that can be carried by the motorhome.

# TAKE THE NEWMAR FACTORY TOUR



*We'd love to have you visit our state-of-the-art production facility in Nappanee, Indiana. Factory tours are given Monday through Friday at 10 a.m. and 1 p.m. Eastern Standard Time. Please arrive 15 minutes before the hour, and check in at the tour area located in Building Nine on Cheyenne Street. No open-toed sandals can be worn, and children under the age of eight are not allowed to take the tour.*

*For more information, please call 1-800-860-0086.*

**ALLSTAR**



NEWMAR CORPORATION • 355 N DELAWARE ST • PO BOX 30 • NAPPANEE IN 46550-0030  
574.773.7791 • fax 574.773.2895 • [www.newmarcorp.com](http://www.newmarcorp.com)

Some features shown in our literature are optional. Colors and finishes are photographic representations. The actual materials may look different. Prices, specifications and floorplans are subject to change at Newmar's discretion, without prior notice or obligation. Please see your dealer for actual samples and specifications. © 2008 Newmar Corporation. Printed in the U.S.A. (04/08)

