

2007
**TORREY
PINE**
Fifth Wheel





Indulge

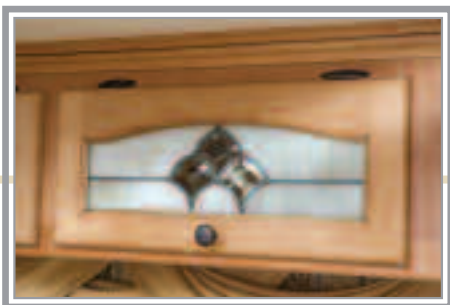
Behold everything you've ever wanted in a fifth wheel. With only a short list of options, the Torrey Pine comes fully equipped to pamper your RV travels.

You'll see and feel the difference immediately. It has more style, more comfort and more convenience—more of everything you expect when stepping up to the best.

Enjoy sumptuous interior spaces where a home-like sense of well being envelops you. Warm wood tones contrast with rich fabrics and flourish to delight the eye and soothe the senses. Signs of old world craftsmanship are everywhere; including in the leaded décor glass cabinet doors, intricately detailed slideout fascias, raised panel hardwood cabinet doors, crown molding and much more.



37SKRE shown with optional equipment and features.



Comfort beckons with the luxuriant living room hide-a-bed sofa and glider chairs accented by thick sculpted carpeting, decorative wall borders and pleated day/night shades. Queen Anne style living room end table and décor-keyed lighting heighten the effect of this inviting space.

You'll appreciate the superb utilization of interior spaces – the ideal uniting of form and function. Graceful, arched headers accent space-saving pocket doors. Padded vinyl ceiling panels are pleasing to behold, while helping create quiet sanctuary.

Torrey Pine from Newmar. When you know the difference.

Ambience Quality

that says you

that says Newmar

Take a close look at the Torrey Pine kitchen. You'll quickly sense what sets this fifth wheel apart from all the rest: thoughtful niceties teamed with convenient necessities.

From the sleek Samsung Staron® countertop with integrated solid surface sink to the ceiling mounted track lighting, Torrey Pine's kitchen surrounds you with smart design and superb style. Ginger Maple cabinets with hardwood raised panel doors are beautifully accented by oil rubbed bronze hardware and fixtures. The hefty eight-cubic-foot capacity Norcold® refrigerator has matching Ginger Maple hardwood door panels. Whip up snacks or entire meals in a snap with the 30-inch GE® combination microwave/convection oven.

For all your food and fixin's, the full-height pantry with fully adjustable slide-out shelves puts everything right at your fingertips. A lighted, recessed toe kick at cabinet bottom adds to the attractive, home-like feel of the kitchen. Flush-mount, solid surface sink covers match the countertop and enhance counter workspace. When the sealed three-burner, electronic ignition range isn't in use, a matching Staron® top folds over it to provide even more food prep area. Smooth opening drawers with metal guides are extra deep for maximum storage capacity.

37SKRE shown with optional equipment and features.

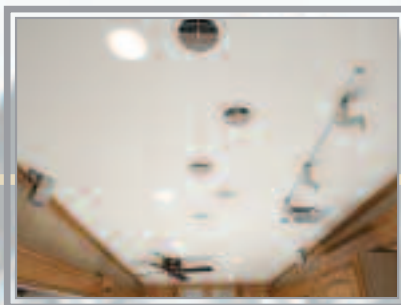




Savor



Embrace



Amenities

that pamper

From the gentle sweep of the arched door headers to interior steps of wood grain laminate trimmed with hardwood, you'll appreciate the craftsman touches in Torrey Pine's living areas. An available, double-

door closet (37SKRE only) with overhead cabinet greets you and stows all your outdoor garments. Switches for interior/exterior lights and accessories are grouped right at your fingertips as you enter. A command center and monitor panel for Torrey Pine's systems is easy to access in a cabinet console above the entry door.



37SKRE shown with optional equipment and features.

Torrey Pine's gracious dining and living area is big on home-style comfort and convenience. The spacious dinette is a great place to share time with family and friends over a meal or snack. Freestanding, "Super Slider" table with fluted base seats two and easily expands to accommodate four adults. It comes with two sleek, fixed dinette, padded chairs with underseat storage. Luxurious living room chairs recline and slide for optimal comfort while reading, chatting or watching TV.

The living room sofa converts to a double bed that sleeps two adults comfortably and comes with matching pillows that heighten its designer touch. The Torrey Pine entertainment center incorporates a handy desk with optional chair. Newmar's exclusive central air conditioning design assures summer comfort, utilizing unique ductwork channels to cool air everywhere for outstanding efficiency and temperature balance.

This way, please, *your luxury suite awaits!*

Comfort abounds in the soothing environs of your Torrey Pine bedroom and bathroom suite. Sculpted carpet provides a plush base for the expansive bed with King Coil™ 60" x 80" pillow-top mattress. Underneath, find ample storage in a carpeted compartment that's easy to access thanks to the hydraulically assisted lift mechanism. Suede, quilted bedspread with pillow shams and accent pillows beautifully coordinate with the suede-quilted, mirrored headboard. You'll love the angled cabinets with leaded glass door accents and the all-hardwood slideout fascias. They unite with Ginger Maple cabinetry to provide one of the most appealing bedroom décors you've ever experienced in a fifth wheel. Newmar remembered the details, too, right down to Torrey Pine monogrammed sheets, pillow cases, towels and wash cloths.

The bathroom area provides even more amenities. The large shower with built-in seat has its own light and skylight, plus a handy adjustable-height shower head. Radius vanity top and cabinet front add contemporary style and are highlighted by the Samsung Staron® countertop with integrated solid surface sink. Oil rubbed bronze fixtures complete the stunning look.

A cedar-lined SuperStorage™ wardrobe boasts two full-width shoe racks and a top shelf for added storage. Above, you'll find an overhead cabinet with 20-inch LCD television. You can also enjoy music from the Torrey Pine's entertainment center via two bedroom speakers with on-off toggle switch.

37SKRE shown with optional equipment and features.



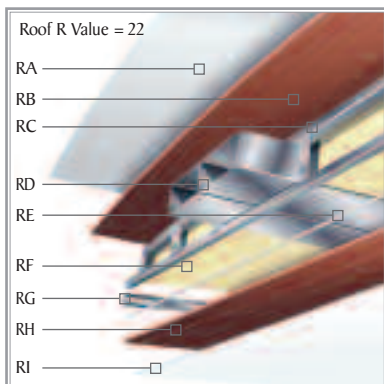


Suite Dreams

Newmar Integration

Newmar Express Limited Warranty

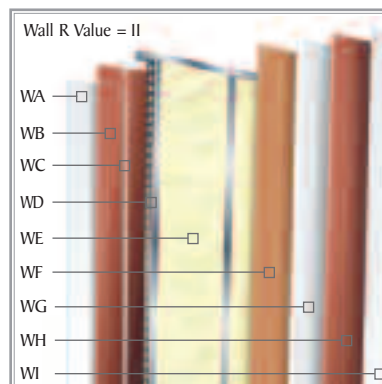
As proof of our commitment to you, we at Newmar back every Torrey Pine fifth wheel with our industry-leading, one-year Newmar Express Limited Warranty. Ask your dealer for details.



Roof R Value = 22

- RA ——— □
- RB ——— □
- RC ——— □
- RD ——— □
- RE ——— □
- RF ——— □
- RG ——— □
- RH ——— □
- RI ——— □

- RA. Strong, durable BriteTEK® Roof
- RB. "Walkable" Roof Decking
- RC. Aluminum Rafter Framing
- RD. Air Conditioning Ducting
- RE. Sikaflex® Adhesive
- RF. R-19 Fiberglass Batten Insulation
- RG. Aluminum Stringer Framing
- RH. 3/16" Plywood Ceiling Panel
- RI. Padded Vinyl Overlay



Wall R Value = 11

- WA ——— □
- WB ——— □
- WC ——— □
- WD ——— □
- WE ——— □
- WF ——— □
- WG ——— □
- WH ——— □
- WI ——— □

- WA. Gelcoated Exterior Sidewall
- WB. 3/16" Plywood Exterior Wall
- WC. Sikaflex® Adhesive
- WD. Aluminum Framing with C-Channels
- WE. R-7 Fiberglass Batten Insulation
- WF. Kraft Paper Vapor Barrier
- WG. 5/8" Bead Foam Insulation
- WH. 3/16" Plywood Wall Panel
- WI. Vinyl Overlay

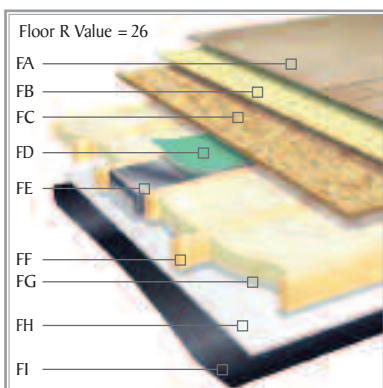
Quality Circle

Newmar has been recognized by the RV Dealer Association Quality Circle Award for its efforts on behalf of customers and dealers.



Your Torrey Pine fifth wheel reflects Newmar's long history of product innovation and industry "firsts." You can depend on the exacting standards and meticulous care by which this fifth wheel is built. It's a showcase for Newmar value.

- | | |
|---|--|
| A. Aerodynamic Gelcoated Fiberglass End Caps | J. EZ Lube® Hubs |
| B. Gelcoated Exterior Sidewall | K. MOR/ryde® RE Suspension |
| C. Dark Tinted Safety Glass | L. Radius Aluminum Roof Wraps |
| D. Dual Battery Box | M. 15,000 BTU Total Comfort™ Ducted Air Conditioning |
| E. Molded Lower Sidewall Skirting and Gooseneck | N. 16" O.C. Aluminum Sidewall Studding |
| F. Power Front Jacks | O. BriteTEK® Roof |
| G. Pass-Through SuperStorage™ | P. "Walkable" Roof Decking |
| H. 12" I-Beam Custom Built Frame | Q. 16" O.C. Aluminum Roof Rafters |
| I. Full Height Frame Outriggers | R. Side Awning |

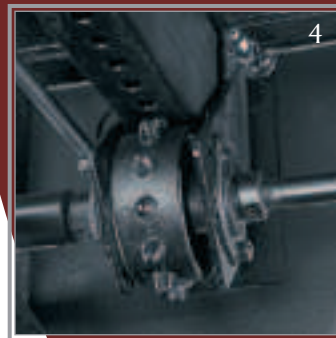
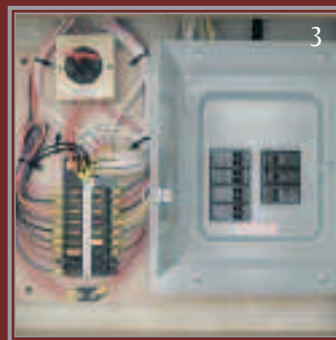


- FA. Carpet/Vinyl Floor
- FB. Residential Grade Carpet Padding
- FC. 5/8" Floor Decking
- FD. Foam Panel for Added Insulation and Noise Reduction
- FE. Aluminum Heat Ducting
- FF. 2" x 3" Wood Floor Joists
- FG. R-19 Fiberglass Batten Insulation
- FH. 5/8" Bead Foam Insulation
- FI. Aluminum Underbelly 4' x 8' Sheets



Newmar's exclusive PolarPak R-19™ insulation in floor, ceiling, front and rear caps surrounds you with comfort and efficiency. It significantly increases your R-value and is standard on every Torrey Pine.

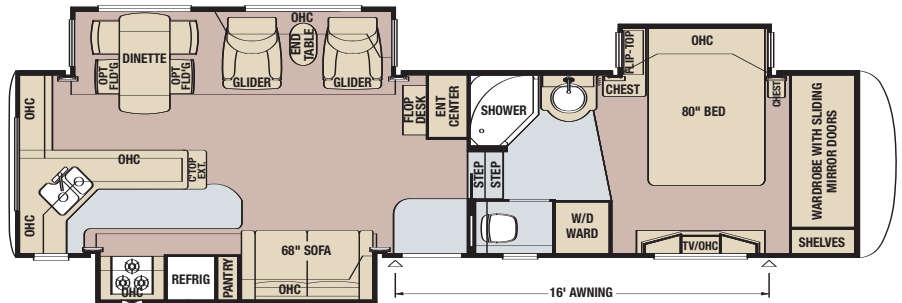
1. In-line water filter helps ensure plenty of clean, clear water wherever you travel.
2. 15-foot coiled water hose with quick-connect fitting, exterior cable jack and 110-volt, 12-volt outlets are conveniently located just inside the SuperStorage™ compartment.
3. 12-volt and 110-volt electrical system circuit breakers are located in a handy cabinet above the toilet.
4. The Newmar designed slideout mechanism provides years of smooth, dependable service.
5. Torrey Pine rides confidently on 17.5-inch Goodyear® H-rated tires as standard equipment.
6. Expansive pass-through SuperStorage™ area is heated and lighted. It boasts two handy cargo hooks and three-way access. Utility components are located in a separate, easily accessible compartment within the SuperStorage™ area.
7. Undermounted 17.5-inch H-rated Goodyear® spare tire is easy to access with lift kit.



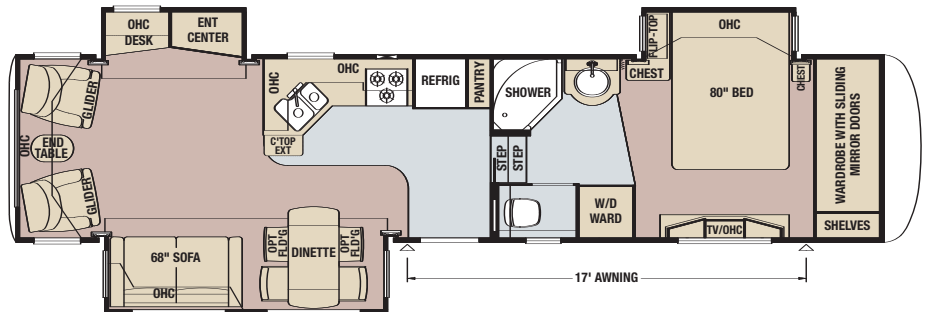
Selection

to fit your lifestyle!

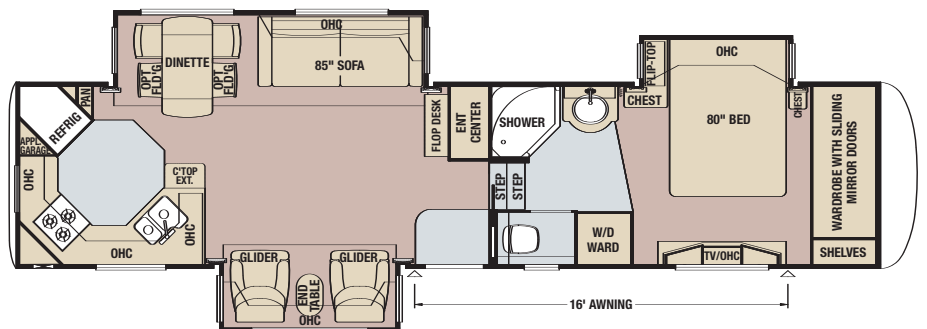
Model	TPFW 35LKCL
Tire Size	215/75R17.5-H
GAWR	8,000
GVWR	18,000
App. Length	38' 5"
App. Height	12' 11"
Width	97"
App. Dry Weight	14,355
App. Hitch Weight	2,725
Fresh Water (gal.)	75
Grey (gal.)	84
Sewage Cap. (gal.)	42
App. Hitch Height	47"
Heat Cap. (BTU)	42,000



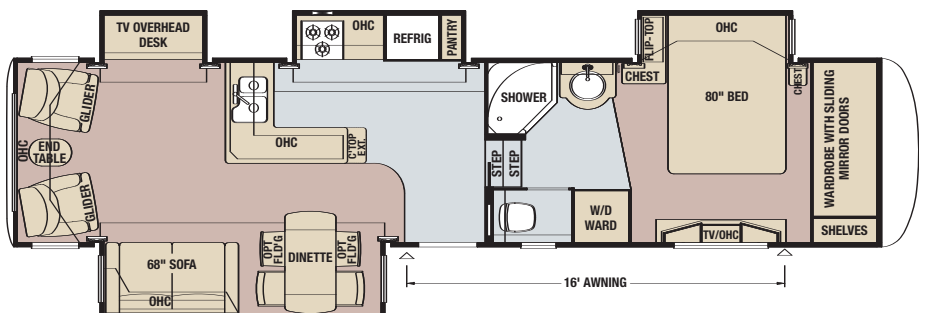
Model	TPFW 36BLSK
Tire Size	215/75R17.5-H
GAWR	8,000
GVWR	18,000
App. Length	39' 4"
App. Height	12' 11"
Width	97"
App. Dry Weight	13,980
App. Hitch Weight	2,660
Fresh Water (gal.)	75
Grey (gal.)	84
Sewage Cap. (gal.)	42
App. Hitch Height	47"
Heat Cap. (BTU)	42,000



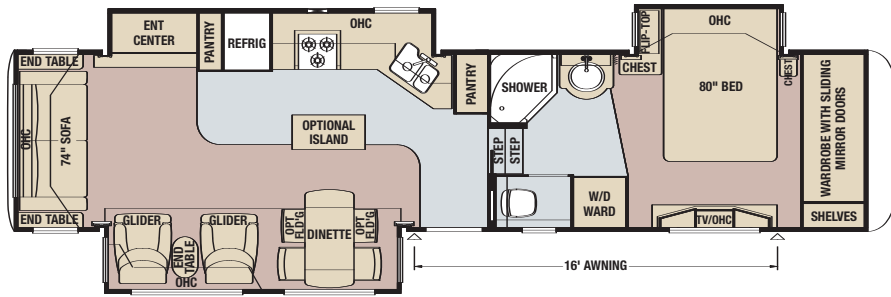
Model	TPFW 36LSKA
Tire Size	215/75R17.5-H
GAWR	8,000
GVWR	18,000
App. Length	39'
App. Height	12' 11"
Width	97"
App. Dry Weight	14,200
App. Hitch Weight	2,700
Fresh Water (gal.)	75
Grey (gal.)	84
Sewage Cap. (gal.)	42
App. Hitch Height	47"
Heat Cap. (BTU)	42,000



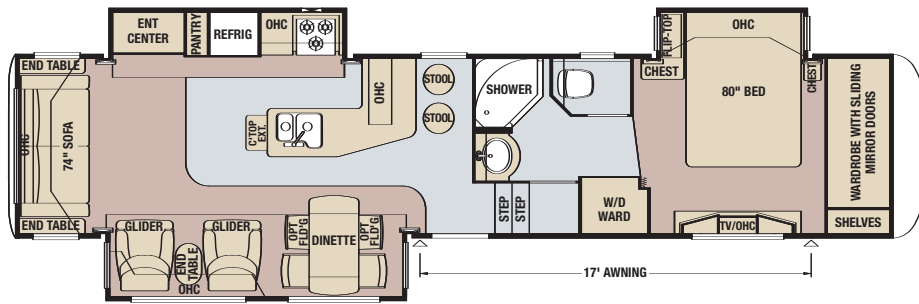
Model	TPFW 36PKRL
Tire Size	215/75R17.5-H
GAWR	8,000
GVWR	18,000
App. Length	39' 1"
App. Height	12' 11"
Width	97"
App. Dry Weight	14,670
App. Hitch Weight	2,935
Fresh Water (gal.)	75
Grey (gal.)	84
Sewage Cap. (gal.)	42
App. Hitch Height	47"
Heat Cap. (BTU)	42,000



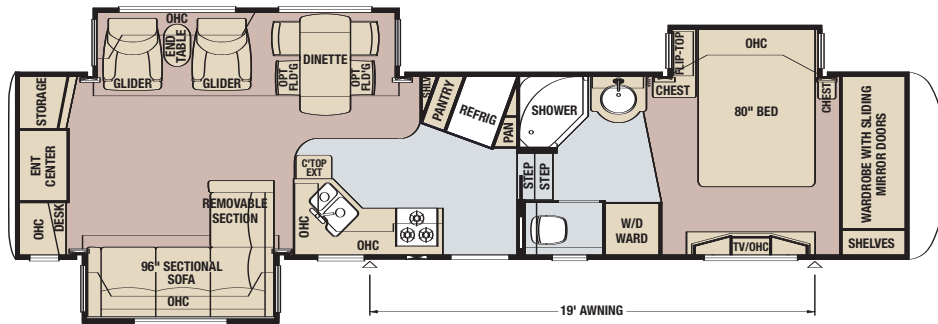
Model	TPFW 36RLKS
Tire Size	235/75R17.5-H
GAWR	8,000
GVWR	18,000
App. Length	40'
App. Height	12' 11"
Width	97"
App. Dry Weight	14,705
App. Hitch Weight	3,085
Fresh Water (gal.)	75
Grey (gal.)	84
Sewage Cap. (gal.)	42
App. Hitch Height	47"
Heat Cap. (BTU)	42,000



Model	TPFW 37LKSB
Tire Size	235/75R17.5-H
GAWR	8,000
GVWR	18,000
App. Length	40' 6"
App. Height	12' 11"
Width	97"
App. Dry Weight	14,770
App. Hitch Weight	2,805
Fresh Water (gal.)	75
Grey (gal.)	84
Sewage Cap. (gal.)	42
App. Hitch Height	47"
Heat Cap. (BTU)	42,000



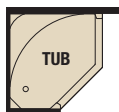
Model	TPFW 37LSRE
Tire Size	235/75R17.5-H
GAWR	8,000
GVWR	18,000
App. Length	40' 6"
App. Height	12' 11"
Width	97"
App. Dry Weight	14,230
App. Hitch Weight	2,705
Fresh Water (gal.)	75
Grey (gal.)	84
Sewage Cap. (gal.)	42
App. Hitch Height	47"
Heat Cap. (BTU)	42,000



Floorplan Options



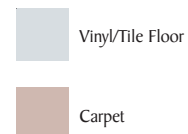
Built-In Dinette with (2) Drawers. Option available on all models.



Fiberglass Tub with Glass Door. Option available on all models.

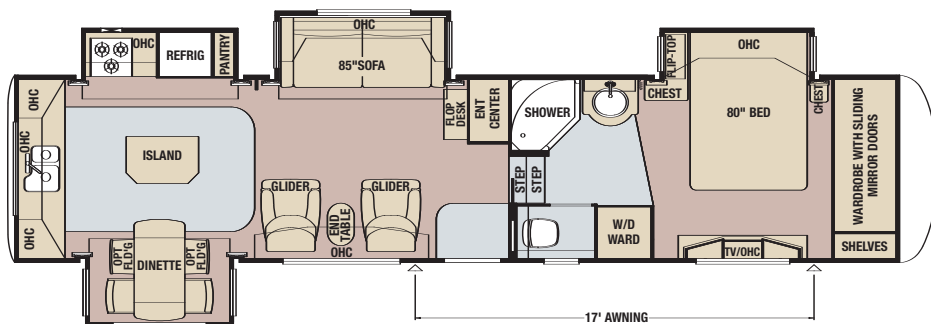


King Size Bed. Option available on all models.

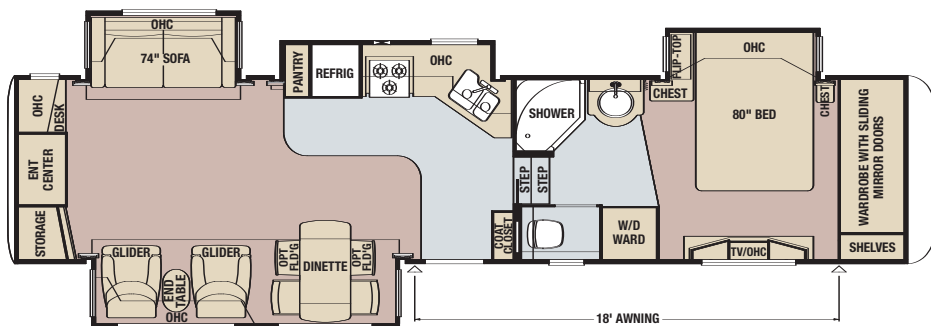


Torrey Pine Floorplans

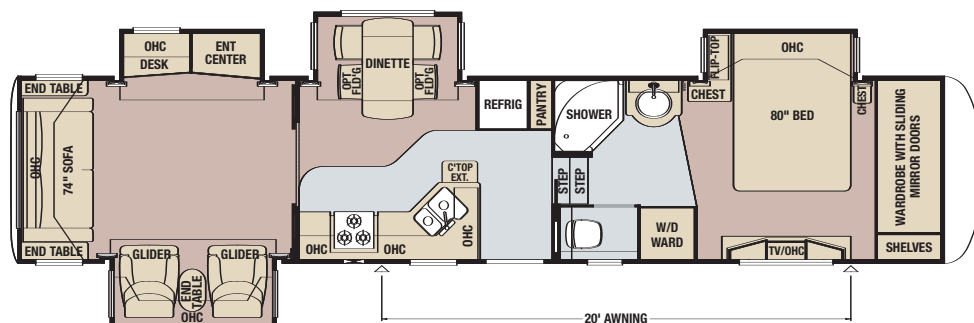
Model	TPFW 37RKDS
Tire Size	235/75R17.5-H
GAWR	8,000
GVWR	18,000
App. Length	40' 2"
App. Height	12' 11"
Width	97"
App. Dry Weight	15,000
App. Hitch Weight	2,850
Fresh Water (gal.)	75
Grey (gal.)	84
Sewage Cap. (gal.)	42
App. Hitch Height	47"
Heat Cap. (BTU)	42,000



Model	TPFW 37SKRE
Tire Size	235/75R17.5-H
GAWR	8,000
GVWR	18,000
App. Length	40' 2"
App. Height	12' 11"
Width	97"
App. Dry Weight	14,205
App. Hitch Weight	2,695
Fresh Water (gal.)	75
Grey (gal.)	84
Sewage Cap. (gal.)	42
App. Hitch Height	47"
Heat Cap. (BTU)	42,000



Model	TPFW 39QSRL
Tire Size	235/75R17.5-H
GAWR	8,000
GVWR	18,000
App. Length	41' 10"
App. Height	12' 11"
Width	97"
App. Dry Weight	15,350
App. Hitch Weight	2,915
Fresh Water (gal.)	75
Grey (gal.)	84
Sewage Cap. (gal.)	42
App. Hitch Height	47"
Heat Cap. (BTU)	42,000



Pearl Gray – Painted Graphics (Standard)



Gold Metallic – Painted Graphics (Optional)

Options Interior Colors

Standard Vinyl Flooring



Simulated Plank Flooring



12" Marble-Look Flooring



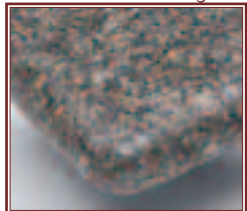
Simulated Ceramic Tile Flooring



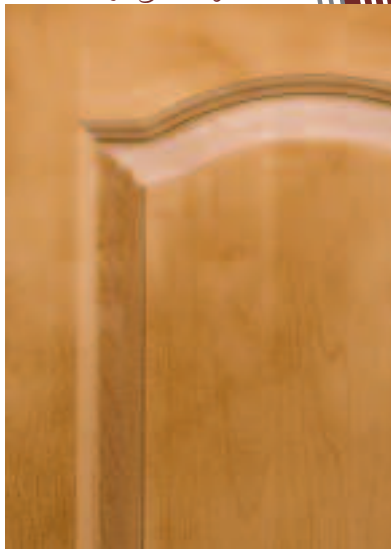
Standard Hardware



Standard Countertop



Standard Ginger Maple



Ginger Maple Glaze



Briar Smoke



Emerald



Brocade Gold



Sagehire



Optional Features

Exterior Choices

Gold Metallic Painted Graphics

Décor Choices

Briar Smoke Emerald Brocade Gold Sapphire

Air Conditioner & Heating

15,000 BTU Penguin™ AC*

15,000 BTU Penguin™ Heat Pump AC*

Extra 13,500 BTU Penguin™ AC in Bedroom

Wire & Brace for Second AC in Bedroom

(2) 40-lb. Propane Bottles

Appliances & Accessories

32" LCD TV in Entertainment Center

Icemaker Added to Refrigerator**

Norcold® 10 cu. ft. Refrigerator

Norcold® 12 cu. ft. 4-Door Refrigerator

Norcold® 12 cu. ft. 4-Door Refrigerator w/Ice & Water Dispenser

3-Burner Recessed Cooktop w/ Drawers Below in Place of Oven

Central Vac w/ Floor Port & Tool Kit

30" Speedcook GE® Advantium™ Microwave

Electric Fireplace**

Roof-Mount Satellite Prep

Stackable Washer & Dryer (Includes Prep)

Cabinets & Furniture

Light Ginger Maple, Glazed Hardwood Cabinetry

Built-In Booth Dinette

Ultra Leather Sofa*

First Ultra Leather Glider/Recliner*

Second Ultra Leather Glider/Recliner*

First Ultra Leather Euro Recliner w/ Ottoman*

Second Ultra Leather Euro Recliner w/ Ottoman*

Island Kitchen Base Cabinet (36RLKS Only)

King Bed 72" x 80" King Coil Mattress

(2) Fixed Dinette Chairs w/ In-Seat Storage

(2) Folding Dinette Chairs w/ In-Seat Storage

Folding Desk Chair**

Queen Anne Style Sofa Coffee Table

Electrical Features

7.0 Onan® Generator w/ Energy Command, Auto Changeover (Includes Prep)

Generator Prep (Includes Energy Command, Start Switch, Fuel Tank & Gauge)

Solar Prep (Includes Wire from Roof to Battery Compartment)

Exterior Features

Bike Rack Carrier

Pull-Out Storage Tray in Pass-Through

Independent Power Front Jacks

Rear 12V Power Twin Stabilizer Jacks*

Rear Ladder

Interior Features

12" Marble Tile Look Floor in Kitchen, Bath, Foyer & Steps

Simulated Ceramic Tile in Kitchen, Bath, Foyer & Steps

Simulated Plank Floor in Kitchen & Foyer

Plumbing/Bath Features

Exterior Shower (Located on Off-Door Side)

Fiberglass Tub w/ Glass Door

12V Heat Pads for Holding Tanks (NA CSA Units)

Thetford™ Aria Sculptured China Stool

Windows, Awnings & Vents

Carefree® One-Touch Armored Awning w/ Wind Smart Sensor & Remote

Carefree® Summit Armored Slideout Cover Pkg.

Carefree® Fiesta Armored Window Cover Pkg.

Clear Skylight in Bath, Kitchen & Living Areas

Fantastic™ Vent w/ Rain Sensor in Kitchen

Fantastic™ Vent w/ Rain Sensor over Bath Sink

CSA Approval (for Canadian Dealers Only)

Double Pane Tinted Safety Glass Windows

State Seal for KY, NE, OR & WA

Standard Features

Air Conditioning & Heating

15,000 BTU Total Comfort™ Central AC

(2) 30-lb. Propane Gas Bottles w/ Auto. Regulator

42,000 BTU Furnace w/ In-Floor Ducted Heat

LP Leak Detector

Appliances & Accessories

10 Gal. Gas/Electric DSI Water Heater

30" GE Convection Microwave

Entertainment Package:

27" Flat Screen TV & Surround Sound System w/ DVD, CD and AM/FM Stereo Tuner, Video Selector Switch, Plus 20" LCD TV in Bedroom

8 cu. ft. Refrigerator w/ Thermostat & LED Readout

Sealed 3-Burner Rangetop w/ Electronic Ignition

22" Oven w/ Glass Door & Electronic Ignition

Flush-Mounted, Solid Surface Bi-Fold Range Cover

Cable TV Connection w/ RG-6 Coax

Living Room Ceiling Fan

Corian® Knife Block behind Range

Hardwood, Raised, 6-Panel Refrigerator Front

Magazine Rack in Water Closet

Paper Towel Holder in Kitchen

Phone Jack in Living/Kitchen Area

Secondary Phone Jack for Internet Access at Dinette or Desk

TV Antenna w/ Power Booster & (2) Interior Jacks

Prep for Ground Satellite Dish w/ Phone, TV Jack & Recept

Bedroom Speakers (2) w/ On/Off Toggle Switch

Washer/Dryer Prep

Living Room Pull-Out TV Swivel/Slide Tray

Cabinets & Furniture

Ginger Maple, Hardwood Raised Panel Cathedral OHC Doors

Hide-A-Bed Sofa w/ Decorative Pillows

Glider/Recliner Chairs**

Bar Stools**

Queen Anne Style End Table**

Metal Drawer Guides

"Super Slider" Freestanding Dinette Table w/ Fluted Base

Fixed Dinette Chairs (2) w/ In-Seat Storage

Staron™ Solid Surface Kitchen & Bath Countertops w/ Integrated Solid Surface Bowls

Flush-Mounted, Solid Surface, Kitchen Sink Covers

Staron™ Kitchen Backsplash

Staron™ Desk, Dresser & Nightstand Tops**

Cedar-Lined SuperStorage™ Bedroom Wardrobe w/ (2) Full-Width Shoe Racks

Hydraulic Lifts on Bed Top

Kitchen Pantry**

Living Room Mirror

Computer Desk**

Decorative Bedroom Dresser Toe Kick

King Coil 60" x 80" Mattress

Bed Skirt

Nightstand/Storage Chest at Bed

Bed Slide Overhead Cabinets

Drawers at Bathroom Lavatory Base

Hardwood Entry Door Trim

Hardwood Decorative Front Wardrobe Header

Kitchen Countertop Extension**

Hardwood Living Room/Kitchen Ceiling Crown Molding

Some features in our literature are optional. Colors and finishes are photographic representations. The actual materials may look different. Prices, specifications and floorplans are subject to change at Newmar's discretion, without prior notice or obligation. Please see your dealer for actual samples and specifications. ©2006 Newmar Corporation. Litho in USA. NEW21253 6/06-20M

Towable Chassis Features

3" Non-Adjustable Lift Kit

Electric Over Hydraulic Disc Brakes

MOR/ryde® Rubber Pin Box

Electrical Features

12V Lighting Throughout (Except Dinette)

Halogen Ceiling Lights Throughout

Track-Style Lighting in Kitchen

50 Amp Electrical Service w/ Detachable Cord

55 Amp Converter

Convenience Lights at:
Main Entry Door, Entry Door Step, Sewer Hook-Up, Hitch & Water Works Compartment

Decorative Light over Dinette

Dual Battery Box Compartment

Exterior Security Lights (3)

Fluorescent Lights over Kitchen Sinks

Decorative Tube Light in Kitchen Toe Kick Area

Lighted Exterior Storage Compartments

Wall Reading Lights in Living Area Slideouts

Additional Water Pump Switch in Water Works Compartment

Cable Jack & 110/12V Outlet in Doorside Pass-Through Storage Compartment

Battery Disconnect

Command Center above Entry Door

Exterior Features

Pearl Grey Painted Graphics

30" Gelcoated Radius Entry Door

BriteTEK™ Roof w/ "Walkable" Decking & Radius Aluminum Roof Wrap

(2) Cargo Hooks in Exterior Storage Area

Cargo Net in Exterior Storage Area

Extendable Grab Handle at Entrance Door

Gelcoated Fiberglass Exterior Sidewalls & Baggage Doors

Gelcoated Fiberglass End Caps

Molded Gooseneck Pass-Through Storage Door Wraps

Molded Fender Wells

Power Front Jacks

Quick-Release H/D Pin for Front Jack Legs

Rear Skid Bars Prepped for Bike Rack Attachment

Rear Stabilizer Jacks

Triple Entrance Door Step

Heated Pass-Through SuperStorage™ Basement Compartment

Dedicated Compartment in Basement for Utilities

Pass-Through SuperStorage™ in Door Struts

Interior Features

Sculpted Carpeting w/ High Density Padding in Living Room & Bedroom

Vinyl Floor in Kitchen, Foyer & Bath

Fire Extinguisher, Smoke Detector & Carbon Monoxide Detector

Convenience Package:
Floor Safe, Hair Dryer & Cordless Vac

Day/Night Pleated Window Shades w/ Jabots in Living Room & Bedroom

Decorative Wall Border

Interior Assist Handle at Main Entry Door

Kitchen Wastebasket

Lazy Susan in Kitchen OHC

Suede-Quilted Bedspread w/ Shams & Accent Pillows

Monogrammed Linen Package:

(2) Bath Towels, (2) Hand Towels, (2) Wash Cloths
(2) Pillow Cases, (1) Sheet Set

Suede-Quilted Fabric Headboard w/ Beveled Mirrors & Bed Post Accents

Molded Silverware Divider Tray

Laminate Woodgrain Steps w/ Hardwood Bullnose Trim

Padded Vinyl Ceiling Panels

Leaded Glass Door Accents Living Room & Bedroom

Decorative Hardwood, Arched-Pocket Door Headers

Hardwood, Raised, 6-Panel Interior Passage Doors

Decorative Hardwood Slide Fascias

Plumbing/Bath Features

Oil-Rubbed Bronze Hardware & Fixtures

Bath Accessories:

Toilet Paper Holder, Toothbrush Holder, Soap Dish, Towel Bar & (2) Robe Hooks

1-Piece Fiberglass Shower w/ Molded Seat & Glass Enclosure

Adjustable Height Showerhead

High-Rise Kitchen Faucet w/ Pullout Sprayer

Medicine Cabinet w/ Deluxe Lighting

Monitor Panel

Sewage Holding Tank Rinse

Sewage Hose Storage Tray

Lighted, Heated and Enclosed Exterior Water Works Compartment

Thetford™ Aqua Magic Style Lite China Toilet w/ Spray Attachment

Shower Courtesy Light

In-Line Water Filter

Water Heater Bypass

15' Quick-Connect Style Hose & Sprayer in Pass-Through Storage

Construction Features

12" I-Beam Custom Built Frame

5/8" Structurewood Floor Decking

5/8" Bead Foam Insulation Laminated in Sidewalls

Aluminum Framed Sidewalls, Roof, Front & Rear on 16" Centers

Fully Heated & Insulated Holding Tanks

Enclosed Underbelly w/ 4'x8' Sheets of Aluminum Laminated to 5/8" Bead Foam

PolarPak R-19™ Insulation in Roof, Floor, Front & Rear End Caps

Extended Pin Box

Composite R-Values of...
Roof=R-22 Floor=R-26 Sidewalls=R-11

Windows, Awnings & Vents

Create-A-Breeze™ Vent w/ Automatic Lift in Water Closet

Carefree® Fiesta Armored Side Awning

Bathroom Window, Blind & Valance

Dark Tinted Safety Glass Windows

Shower Skylight

Decorative Window Treatments w/ Jabots

Large Picture Window at Dinette

Chassis Features

Recessed 175" H-Rated Goodyear® Spare Tire w/ Lift Kit**

MOR/ryde® RE Suspension

EZ Lube® Axles

175" H-Rated Goodyear® Tires**

Polished Aluminum Wheels

* in lieu of standard

** as shown in floorplan



WHEN YOU KNOW THE DIFFERENCE™

NEWMAR CORPORATION
355 N DELAWARE ST PO BOX 30
NAPPANEE IN 46550-0030
574-773-7791 Fax 574-773-2895
www.newmarcorp.com

Your Official Torrey Pine Dealer: