

20  24	<i>Ventana</i> DIESEL MOTORCOACH	
---	-------------------------------------	---

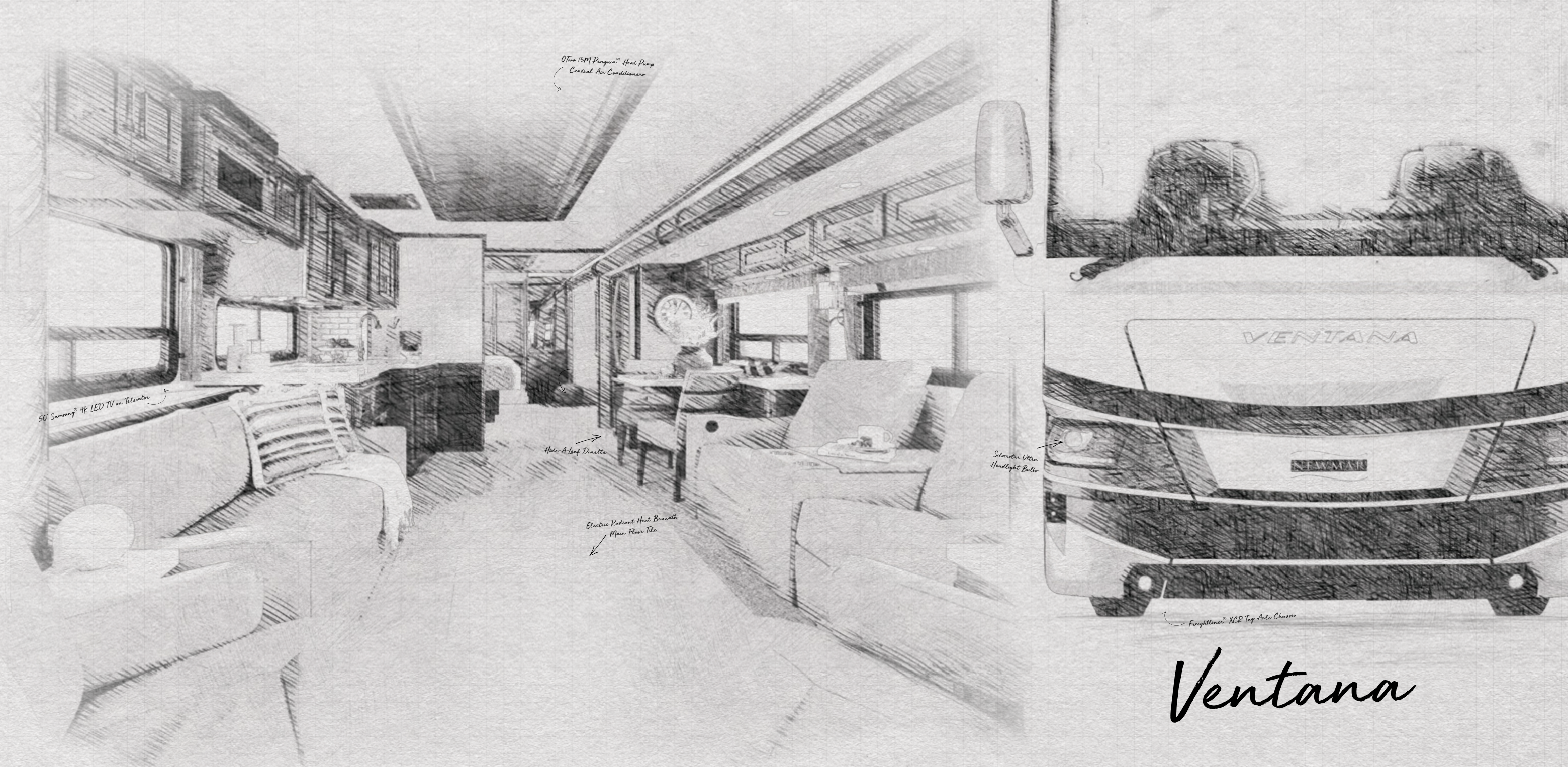






# So many choices. So much opportunity.

The Ventana is all-new for 2024, and still comes with loads of flexibility to make this coach your own. With two chassis options, four lengths, and 10 total floor plans, plus dozens of options, the Ventana also boasts stylish new changes throughout. Add in the latest in technical advancements, and it's easy to see why the Ventana stands out from the crowd—no matter where you go.



## Ventana



# Freightliner® XCR Tag Axle Chassis Spartan® K2 Tag Axle Chassis (Optional)



40'-43' / 6 floor plans

Cummins L Diesel  
Engine  
400 HP  
1250 lb./ft. torque  
Camden Full-Paint  
Masterpiece Finish™  
Exterior

# Freightliner® XCR Chassis Spartan® K2 Chassis (Optional)



35'-38' / 4 floor plans

Cummins L Diesel  
Engine  
380 HP  
1150 lb./ft. torque  
Camden Full-Paint  
Masterpiece Finish™  
Exterior



# Cockpit

## Six-Way Power Driver and Passenger Seats

Power Lumbar and Footrest

## Industry-First Comfort Drive™ Adaptive Steering

## Mobileye® Lane Tracking and Lane Departure System

## OnGuard™ Collision Mitigation Adaptive Cruise System (Optional)

Adjustable Following Distance Control

## Tire Pressure Monitor System\*

## Xite Dash Radio

9" Dual Monitors\*

Nav-N-Go Navigation System

Apple CarPlay®

## Harman/JBL 180-Watt Sound System and Subwoofer

\*New for 2024







# Cabin

**Three Décor Options:  
Brighton\*, Palisades\*, and Saguaro\***

**50" Samsung® 4K LED TV on Televator**

Bose® Soundbar

43" Samsung® 4K LED TV in Front Overhead  
(Optional)

**Window Treatments<sup>1</sup>**

**Porcelain Tile Flooring<sup>1</sup>**



\*New for 2024  
\*\*See Features & Options for all available furniture configurations  
<sup>1</sup>Newly styled for 2024



# Cabin

Slideout Fascia and Feature Ceiling\*

Wall Sconces\*

Two 15M Penguin™ Heat Pump  
Central Air Conditioners\*\*

Electric Radiant Heat Beneath  
Main Floor Tile (Optional)

WiFiRanger Everest System  
with Aspen Router (Optional)

10" Monitor

*\*Newly styled for 2024  
\*\*Three units on 43' floor plans*



Floor Plan 4369 with Saquaro décor and Newport cabinetry





# Galley & Dinette

## 30" Convection Stainless Microwave

## Recessed Three-Burner Cooktop

All-Electric Flush Mount Induction Cooktop  
(Optional\*)

## 19.7 Cu. Ft. Whirlpool® Refrigerator

(Optional\*)

## Glazed Maple Hardwood Cabinets\*\*

Available in Four Matte or High Gloss Finish  
Color Options

Soft-Close Cabinet Drawers

Undermounted LED Lights

## Polished Solid-Surface Countertops

## Pull-Out Pantry Shelves

Push-to-Release Drawer Slides

## Hide-A-Leaf Dinette

## Backsplash\*\*

\*Standard on 43' floor plans  
\*\*Newly styled for 2024











# Bedroom

**King-Size Bed\* with Pillow Top Mattress**

Adjustable Support Air Bed (Optional)

**Samsung® 4K LED TV**

**Wardrobe**

Safe (Optional)





# Bathroom

**Residential Shower\***

**Vanity, Backsplash, and Hardware\*\***

**Aqua Miser® Shower System**

**Splendide® Two-Piece Stacked Washer and Dryer (Optional)**

**Chinook Dual Loop Heat with Continuous Water¹**

**Polished Solid-Surface Countertops**



\*Shower size varies by floor plan  
\*\*Newly styled for 2024  
¹Standard only on 43' units  
Half baths available on select floor plans





# Exterior & Storage

**Industry-Exclusive Full-Paint Masterpiece Finish™**  
New Exterior Design with Three Color Combinations\*

**Girard® G2000 Power Side Awning**

- Wind Sensor
- LED Lights
- Remote Control

**Silverstar Ultra Headlight Bulbs**

- Automatic High Beam

**Exterior Entertainment Center** (Optional)

- Samsung® 4K LED TV
- Bose® Soundbar

\*Newly styled for 2024





# Exterior

Industry-Exclusive STAR Foundation

8.0 kW Cummins Onan® Diesel Generator

10-Watt Solar Panel  
(to Charge Chassis Battery)





*interior & exterior*  
*Design Options*





# Barnet



Awning Color: Charcoal Tweed

## BRIGHTON INTERIOR

a. Furniture/Fabric   b. Flooring   c. Counter Top



*\*Exterior colors and interior décor options can be matched to customer preference.*

## CABINET FINISHES



GLACIER\*



TOFFEE\*



NEWPORT\*



BERMUDA\*

*\*Available in Matte or High Gloss Finish*



# Camden



Awning Color: Charcoal Tweed

## PALISADES INTERIOR

a. Furniture/Fabric   b. Flooring   c. Counter Top



## CABINET FINISHES



*\*Exterior colors and interior décor options can be matched to customer preference.*

*\*Available in Matte or High Gloss Finish*



# Stroud



Awning Color: Charcoal Tweed

## SAGUARO INTERIOR a. Furniture/Fabric b. Flooring c. Counter Top



*\*Exterior colors and interior décor options can be matched to customer preference.*

## CABINET FINISHES



GLACIER\*



TOFFEE\*



NEWPORT\*



BERMUDA\*

*\*Available in Matte or High Gloss Finish*

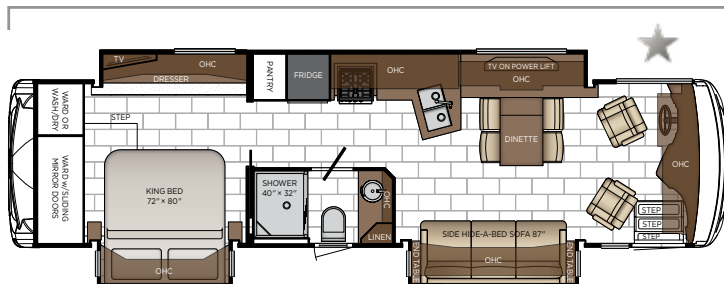


# Floor Plan Specifications



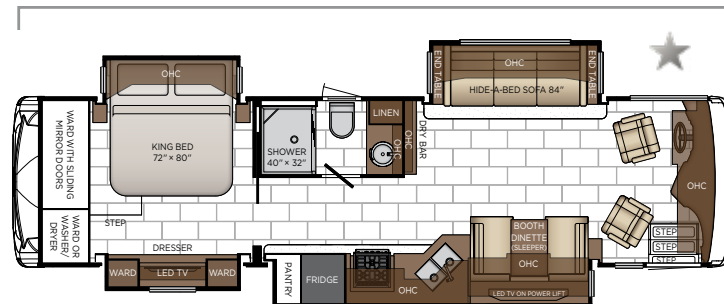


Length: 35' 10"



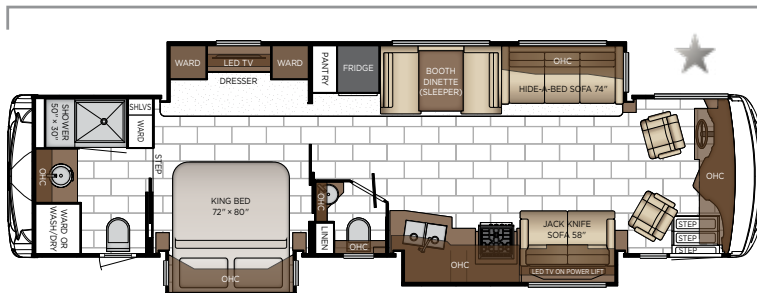
<b>3507</b>	Length	35' 10"	Grey Tank	75 gal.
	Width	101.5"	Sewage Tank	55 gal.
	App. Overall Height	12' 10"	Water Tank	105 gal.
	Interior Width	95.5"	Propane Tank	32 gal.
	Interior Height	83"	Furnace	35,000 btu

Length: 35' 10"



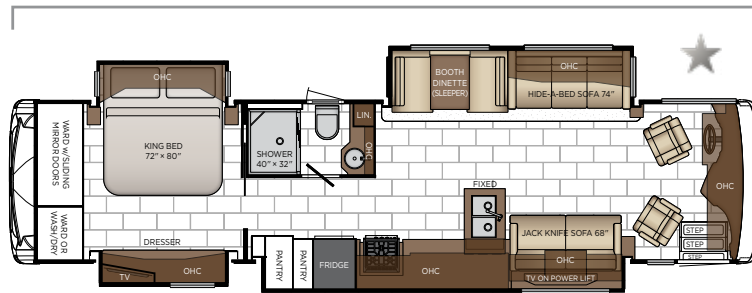
<b>3512</b>	Length	35' 10"	Grey Tank	75 gal.
	Width	101.5"	Sewage Tank	55 gal.
	App. Overall Height	12' 10"	Water Tank	105 gal.
	Interior Width	95.5"	Propane Tank	32 gal.
	Interior Height	83"	Furnace	35,000 btu

Length: 38' 10"



<b>3809</b>	Length	37' 10"	Grey Tank	75 gal.
	Width	101.5"	Sewage Tank	55 gal.
	App. Overall Height	12' 10"	Water Tank	105 gal.
	Interior Width	95.5"	Propane Tank	32 gal.
	Interior Height	83"	Furnace	54,000 btu

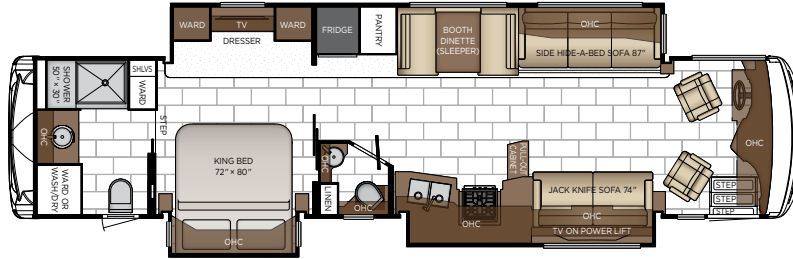
Length: 38' 10"



<b>3817</b>	Length	37' 10"	Grey Tank	75 gal.
	Width	101.5"	Sewage Tank	55 gal.
	App. Overall Height	12' 10"	Water Tank	105 gal.
	Interior Width	95.5"	Propane Tank	32 gal.
	Interior Height	83"	Furnace	54,000 btu

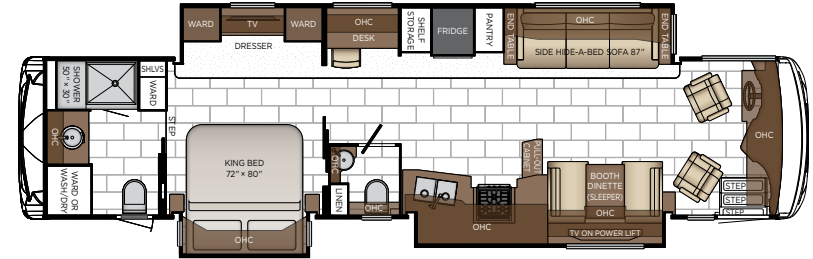


Length: 40' 10"



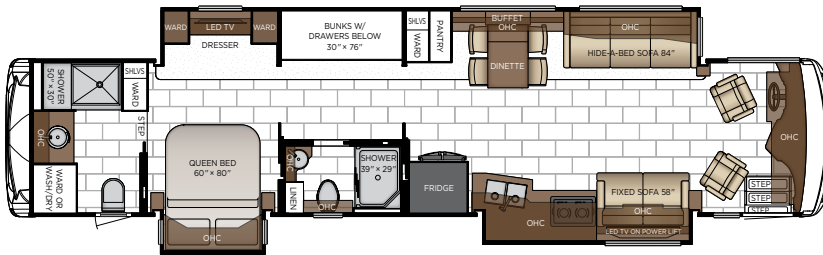
<b>4037</b>	Length	40' 10"	Grey Tank	75 gal.
	Width	101.5"	Sewage Tank	55 gal.
	App. Overall Height	12' 11"	Water Tank	105 gal.
	Interior Width	95.5"	Propane Tank	32 gal.
	Interior Height	83"	Furnace	54,000 btu

Length: 40' 10"



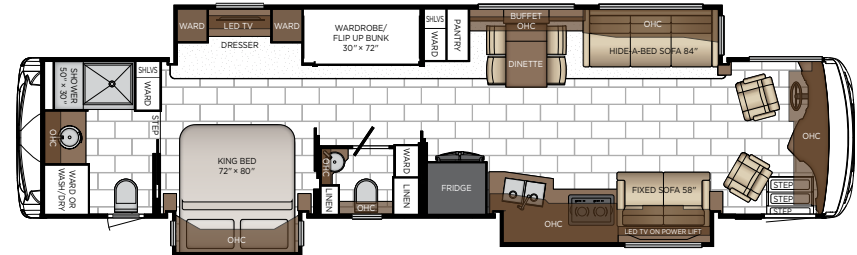
<b>4068</b>	Length	40' 10"	Grey Tank	75 gal.
	Width	101.5"	Sewage Tank	55 gal.
	App. Overall Height	12' 11"	Water Tank	105 gal.
	Interior Width	95.5"	Propane Tank	32 gal.
	Interior Height	83"	Furnace	54,000 btu

Length: 43' 10"



<b>4310</b>	Length	43' 10"	Grey Tank	75 gal.
	Width	101.5"	Sewage Tank	55 gal.
	App. Overall Height	13' 01"	Water Tank	105 gal.
	Interior Width	95.5"	Propane Tank	0 gal.
	Interior Height	83"	Furnace	85,000 btu

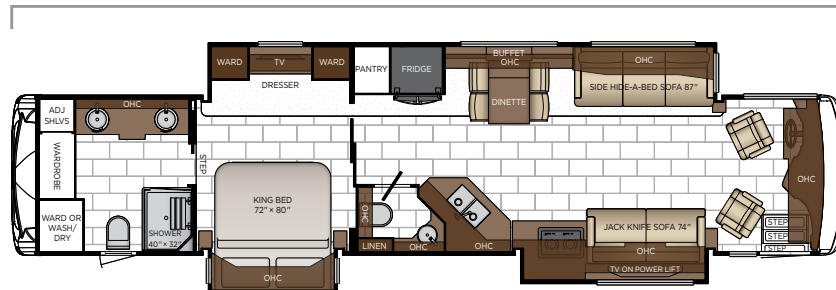
Length: 43' 10"



<b>4326</b>	Length	43' 10"	Grey Tank	75 gal.
	Width	101.5"	Sewage Tank	55 gal.
	App. Overall Height	13' 01"	Water Tank	105 gal.
	Interior Width	95.5"	Propane Tank	0 gal.
	Interior Height	83"	Furnace	50,000 btu



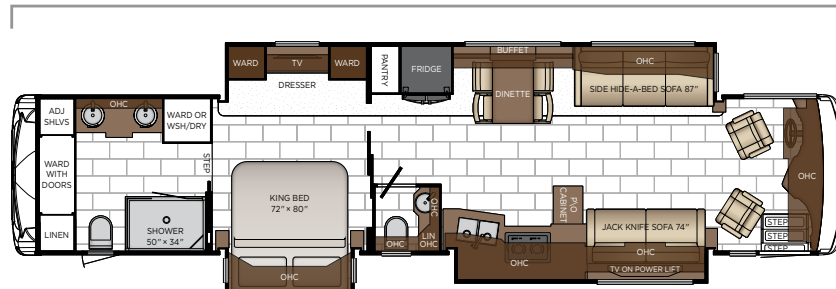
Length: 43' 10"



**4328**

Length	43' 10"	Grey Tank	75 gal.
Width	101.5"	Sewage Tank	55 gal.
App. Overall Height	13' 01"	Water Tank	105 gal.
Interior Width	95.5"	Propane Tank	0 gal.
Interior Height	83"	Furnace	50,000 btu

Length: 43' 10"



**4369**

Length	43' 10"	Grey Tank	75 gal.
Width	101.5"	Sewage Tank	55 gal.
App. Overall Height	13' 01"	Water Tank	105 gal.
Interior Width	95.5"	Propane Tank	0 gal.
Interior Height	83"	Furnace	50,000 btu



# Quality You Can Feel

Like a fine home, the 2024 Ventana is framed 16 inches on center, and is covered by a fiberglass roof with an integrated gutter rail.

V  
E  
N  
T  
A  
N  
A

FREIGHTLINER®											
FLOOR PLAN	ENGINE HP	AXLE RATIO	FUEL CAP.	WHEEL BASE	FRONT GAWR	REAR GAWR	TAG GAWR	GVWR	GCWR	APP. UVW	APP. NCC
3507	380	4.78	100 gal.	212	14200 lb.	24000 lb.	n/a	38200 lb.	48200 lb.	31000 lb.	7200 lb.
3512	380	4.78	100 gal.	212	14200 lb.	24000 lb.	n/a	38200 lb.	48200 lb.	31000 lb.	7200 lb.
3809	380	4.78	100 gal.	248	15000 lb.	24000 lb.	n/a	39000 lb.	49000 lb.	32900 lb.	6100 lb.
3817	380	4.78	100 gal.	248	15000 lb.	24000 lb.	n/a	39000 lb.	49000 lb.	32200 lb.	6800 lb.
4037	400	4.78	100 gal.	245+TAG	15000 lb.	20000 lb.	10000 lb.	45000 lb.	60000 lb.	35100 lb.	9900 lb.
4068	400	4.78	100 gal.	245+TAG	15000 lb.	20000 lb.	10000 lb.	45000 lb.	60000 lb.	35200 lb.	9800 lb.
4310	400	4.78	100 gal.	281+TAG	15600 lb.	20000 lb.	10000 lb.	45600 lb.	60600 lb.	36800 lb.	8800 lb.
4326	400	4.78	100 gal.	281+TAG	15600 lb.	20000 lb.	10000 lb.	45600 lb.	60600 lb.	37000 lb.	8600 lb.
4328	400	4.78	100 gal.	281+TAG	15600 lb.	20000 lb.	10000 lb.	45600 lb.	60600 lb.	36800 lb.	8800 lb.
4369	400	4.78	100 gal.	281+TAG	15600 lb.	20000 lb.	10000 lb.	45600 lb.	60600 lb.	36900 lb.	8700 lb.
SPARTAN®											
FLOOR PLAN	ENGINE HP	AXLE RATIO	FUEL CAP.	WHEEL BASE	FRONT GAWR	REAR GAWR	TAG GAWR	GVWR	GCWR	APP. UVW	APP. NCC
3507	380	4.78	100 gal.	212	14000 lb.	24000 lb.	n/a	38000 lb.	48000 lb.	31200 lb.	6800 lb.
3512	380	4.78	100 gal.	212	14000 lb.	24000 lb.	n/a	38000 lb.	48000 lb.	31800 lb.	6200 lb.
3809	380	4.78	100 gal.	248	14600 lb.	24000 lb.	n/a	38600 lb.	48600 lb.	32600 lb.	6000 lb.
3817	380	4.78	100 gal.	248	14600 lb.	24000 lb.	n/a	38600 lb.	48600 lb.	32400 lb.	6200 lb.
4037	400	4.88	100 gal.	245+TAG	14600 lb.	20000 lb.	10000 lb.	44600 lb.	59600 lb.	35200 lb.	9400 lb.
4068	400	4.88	100 gal.	245+TAG	14600 lb.	20000 lb.	10000 lb.	44600 lb.	59600 lb.	35400 lb.	9200 lb.
4310	400	4.88	100 gal.	281+TAG	16000 lb.	20000 lb.	10000 lb.	46000 lb.	61000 lb.	37000 lb.	9000 lb.
4326	400	4.88	100 gal.	281+TAG	16000 lb.	20000 lb.	10000 lb.	46000 lb.	61000 lb.	37000 lb.	9000 lb.
4328	400	4.88	100 gal.	281+TAG	16000 lb.	20000 lb.	10000 lb.	46000 lb.	61000 lb.	36800 lb.	9200 lb.
4369	400	4.88	100 gal.	281+TAG	16000 lb.	20000 lb.	10000 lb.	46000 lb.	61000 lb.	36900 lb.	9100 lb.

The content in our literature depicts and describes products that are subject to change. For the most recent images and information, please visit [NewmarCorp.com](http://NewmarCorp.com).

Lengths, heights, widths, and dry weights are approximate. Weight will vary based on optional equipment added to the above base weight.

**GAWR:** Gross Axle Weight Rating is the maximum permissible weight for an axle.

**GVWR:** Gross Vehicle Weight Rating is the maximum permissible weight for a fully loaded motor coach.

**GCWR:** Gross Combination Weight Rating is the value specified by the manufacturer of the vehicle as the maximum allowable loaded weight of this motor coach and any towed trailer or towed vehicle.

**UVW:** Unloaded Vehicle Weight is the weight of this motor coach as built at the factory with full fuel, engine oil, and coolants. Does not include cargo, fresh water, propane gas, or dealer-installed accessories.

**NCC:** Net Carrying Capacity is the maximum weight of all occupants, including the driver, personal belongings, food, fresh water, waste water, propane gas, tools, tongue weight of towed vehicle, dealer-installed accessories, etc., that can be carried by the motor coach.

**Specifications supplied by the chassis manufacturer.**

**Ventana R-Values:**

Roof R-Value = 19

Sidewall R-Value = 11

Floor R-Value = 16

Basement R-Value = 4







# Features & Options





## EXTERIOR FEATURES

Full-Paint Masterpiece Finish™ with Diamond Shield Protection on Front Cap
Convex Exterior Mirrors with Remote Control, Defrost and Turn Signal Indicators
Chrome Exterior Mirrors
Entrance Door with Automatic Step
Rear Hitch for Towing Car
Assist Handle at Entrance Door
Mud Flaps
Rear Protective Tow Guard with Stainless Steel Newmar Letters
Undercoating
Smart Level Hydraulic Leveling Jacks with Bluetooth Compatible Touch Pad
Stainless Steel Exterior Trim Pieces on Front Cap and Grill Area
Painted Power Baggage Door Locks, Keyless Entrance Door with Touch Pad and Doorbell

### OPTIONS

Chrome Power Baggage Door Locks
Flag Pole Bracket
Rear Ladder
Storage Tray 36 X 91 Non-Power, Location-Bay 2
Storage Tray 32 X 91 Non-Power, Location-Bay 2
Storage Tray 43 X 56 Non-Power, Location-Bay 3
Storage Tray 43 X 56 Non-Power, Location-Bay 4

## CONSTRUCTION FEATURES

Gelcoated Fiberglass Exterior Sidewalls, Front and Rear Caps
Aluminum-Frame Sidewalls and Roof Construction, 16" on Center
5/8" Foam Insulation Laminated in Sidewalls and Ceiling
Automatic Mechanical Lock Arms on Slideout Rooms-Scissor Style
Polar Pak R19 Batten Insulation in Roof
Fiberglass Roof and Integrated Gutter Rail
Egress Door with Ladder System

## WINDOWS, AWNINGS, & VENTS

Frameless Double-Pane Tinted Safety-Glass Windows
Fan-Tastic® Vent with Rain Sensor in Kitchen and Bathroom
Skylight Above Shower
Girard® G2000 Power Side Awning with Wind Sensor, Remote Control and LED lights
Slideout Awning Covers
One-Piece Tinted Windshield

### OPTIONS

Carefree Window Awning Package of Three, 1-Bedroom, 1-Off Door Side Livingroom, 1-Door Side Livingroom
--

Kitchen Window*
Two Nova Side Awnings
Bunk Windows*

## CHASSIS FEATURES

Aluminum Wheels
Cruise Control
Comfort Drive™ Steering with Adjustable Control
Manual Tilt and Telescope Steering Column with VIP Smart Wheel
Recessed Fuel Fills with Crossover to Fill from Either Side
Back-Up Alarm
Anti-Lock Braking System
Chassis Battery Disconnect
V-Ride Drive Axle Suspension on Freightliner® Chassis
Glass Dash Instrumental Panel
Dash Panel Optiview
Headlights Automatic High Beam
Mobileye® Tracking and Lane Departure Warning System
Steering Wheel Nine Function Switch Pod in Center on Spartan® Chassis
Valid Digital Glare Free Dash on Spartan® Chassis
Module Cummins Accumen on Freightliner® Chassis 40' and 43'
Freightliner® 380Hp on 35'-38' Floor Plans
Freightliner® Tag Axle 400Hp on 40'-43' Floor Plans
Tire Pressure Monitoring on Chassis

### OPTIONS

Spartan® 380Hp on 35'-38' Floor Plans
Spartan® Tag Axle 400Hp on 40'-43' Floor Plans
OnGuard™ Collision Mitigation Adaptive Cruise System with Adjustable Following Distance Control-Freightliner® or Spartan®

## AIR CONDITIONING & HEATING

Two-15K BTU Penguin™ Heat Pump Air Conditioners
Three-15K BTU Penguin Heat Pump Air Conditioner on 43' Floor Plans
Propane Gas Furnace with Ducted Heat on 35'-40' Floor Plans
Dash Heater and Air Conditioner
Chinook Dual Loop Heat with Continuous Hot Water on 43' Floor Plans
Driver and Passenger Dash Overhead Ventilation System
Wall Mounted Sensors for Heating and Air Conditioning

### OPTIONS

Electric Radiant Heat Installed Below Main Floor Tile
---



## ELECTRICAL FEATURES

8.0 kW Cummins Onan® Diesel Quiet Series Generator
50 Amp Electrical Service with Flexible Cord with Automatic Transfer Switch
Four 6-Volt House Batteries on Pull-Out Tray on 35'-40' Floor Plans
Eight 6-Volt House Batteries on Pull-Out Tray on 43' Floor Plans
Battery Disconnect Switch for House Battery
Automatic Generator Start on Low Battery or Temperature Setting
10 Watt Solar Panel to Charge Chassis Battery
2000 Watt Modified Sine Inverter on 35'-40' Floor Plans
2800 Watt Modified Sine Inverter on 43' Floor Plans
12 Volt Auxiliary Receptacle on Dashboard
Emergency Engine Start Switch
Engine Block Heater
Exterior Security Light on Doorside
Midship Side Turn Signals
LED Lights Recessed in Ceiling and Underneath Overhead Cabinets
Lights in Exterior Storage Compartments
Manually Operated Hold-To-Run Slideout Switch
Cable TV Connection
Interior Courtesy Lights
USB Charger at Dinette and Bedroom Night Stand
USB Outlet at Dash for Drive Use
Wireless Charging Mat Built into Dash for Driver Use
Wireless Charging Mat Built into Passenger Console
Spare Fuses in Chassis and House Fuse Panels
Energy Management System
Multiplex Monitor System 10.1" in Center of Coach with Interior Lighting and HVAC Controls
Dimmable/Adjustable Reading Lights at Head of Bed
110 Volt Recept in Bed Overhead with Two Pass-Through Ports
110V/USB Outlet at Head of Each Bunk Area*
12 Volt Recept Auxiliary on Dashboard
Power Rewind Reel with 33' Cord*
Power Rewind Reel with 50' Cord*
Connected Solutions App
Dash Radio, Cameras and Monitors to Power-up from both House Batteries and Ignition
<b>OPTIONS</b>
Solar Prep with Six Gauge Wire Ran from the Roof to the House Battery Compartment
Four Flexible 110 Watt Solar Panels on Roof
Transfer Switch with Surge Protector

## PLUMBING & BATH FEATURES

Demand Water System
Sewage Holding-Tank Rinse
Water Heater Bypass System
Dometic® 321 China Bowl Stool or Macerator Stool*
Sentrel Acrylic Shower Walls with Glass Door
Water Filter for Entire Unit
Exterior Shower
Auto Fill Water Works Compartment
Power Water Hose Reel
Aqua Miser® Shower System
<b>OPTIONS</b>
Fold-Down Shower Seat
Hot Water Line to Generator Area*

## INTERIOR FEATURES

Designer Feature Ceiling
Tile Floor in Kitchen, Bathroom and Living Areas
Carpeting on Slideout Floors
MCD Window Shades
MCD Power Shades at Windshield and Manual Shades on Driver and Passenger Side Windows
Dash Panel Color Coordinated ABS
Decorative Wall Art
Inlaid Three Panel Design Interior Passage Doors
Interior Assist Handle at Main Entry Door
Power Stepwell Cover
Fitted with Round Corner Non-Quilted Bedspread with Accent Pillows
Removable Transport Pads for Under Slideout Rollers
Wastebasket in Kitchen Base Under Sink
<b>OPTIONS</b>
Safe Located in Bedroom Wardrobe

## CABINETS & FURNITURE

Bermuda Glazed Maple Hardwood Cabinets with Mitered Flat Designer Doors- Matte Finish
Concealed Hinges on Cabinet Doors
Soft-Close Cabinet Drawers
Pull-Out Pantry Shelves*
Drawer Slides Push-to-Release in Pantry



Drawers with Full Extension Ball Bearing Guides
Cooktop Cover Flush, Matching Material
Polished Solid-Surface Countertop in Kitchen with Undermounted Stainless Steel Sink and Sink Covers
Polished Solid-Surface Countertop in Bathroom and Bedroom
Desk with One Chair*
Dinette Booth Williamsburg Convertible*
Lifts on Bed Top
Passenger Seat Work Station
Ultrafabric Sofa and Driver/Passenger Seats
Driver Seat with Vibrator for Mobileye® System
Driver and Passenger Seats with Six-Way Power, Power Lumbar and Footrest
Plush Pillow Top Mattress
Extended Rotation Concealed Hinge for Washer and Dryer Cabinet Door
Mesh Cell Phone Holder at Each Bunk Bed*
Molded Silverware Divider Tray
Villa Comfort Fit Furniture

#### OPTIONS

Glacier Glazed Maple Hardwood Cabinets with Mitered Flat Designer Doors-Matte or High Gloss Finish
Newport Glazed Maple Hardwood Cabinets with Mitered Flat Designer Doors-Matte or High Gloss Finish
Bermuda Glazed Maple Hardwood Cabinets with Mitered Flat Designer Doors-High Gloss Finish
Mattress Air R5 Radius Corner
Buffet Dinette with Free Standing Table Two Fixed and Two Folding Chairs
Combination Desk with Buffet Table, Two Fixed and Two Folding Chairs
Dinette Convertible with Two Fixed and Two Folding Chairs that Face to Window
Dinette Euro Booth with Two Table Leaves, Removable Table Leg and Two Folding Chairs
Two Recliners with Lampstand and Reading Lights
Powered Theater Seating 74"
Powered Theater Seating 84" with Reading Lights
Powered Theater Seating 87" with Reading Lights
Bunk Beds to Convert to Wardrobe
Bunk Bed Drop Down Over Driver and Passenger Seats to Windshield with Bunk Ladder

#### APPLIANCES & ACCESSORIES

Convection Stainless Steel Microwave with Three-Burner Recessed Gas Cooktop and Air Fryer Feature
All Electric, Cook Flush Mount Induction on 43' Floor Plans
Air Horns

Norcold® 10 Cu. Ft. Refrigerator with Stainless Steel Refrigerator Front
Whirlpool® 19.7 Cu Ft. on 43' Floor Plans
Prep for Two-Piece Washer and Dryer
Fireplace in Living Area*
Water Heater 10 Gallon Gas/Electric with Direct Spark Ignition on 35'-40' Floor Plans
<b>OPTIONS</b>
Norcold® 15 Cu Ft. Four-Door Refrigerator with Icemaker
Norcold® 15 Cu Ft. Four-Door Refrigerator with Icemaker with Heated Water Line
Whirlpool® 11 Cu Ft. Refrigerator with Two Extra Batteries, 22 gal. Propane Tank and Icemaker
Whirlpool® 11 Cu Ft. Refrigerator with Two Extra Batteries, 22 gal. Propane Tank
Whirlpool® 19.7 Refrigerator with Two Extra 6 Volt Batteries and 22 gal. Propane Tank
Splendide® Two-Piece Stacked Washer and Dryer
All Electric, Flush Mount Induction Cooktop, Whirlpool® 19.7 Refrigerator, 4 Extra Batteries, 2800 Pure Sine Inverter, Hydronic Heat on 35'-40' Floor Plans
Central Vacuum with Tool Kit
110 Volt Heat Pads for Holding Tanks
Dishwasher in a Drawer with Stainless Steel Front Below Cooktop
Electrical Prep for Freezer without Tray
Beverage Center with Wine Cooler and Stemware Rack
Fireplace

#### AUDIO, VIDEO & ACCESSORIES

Samsung® LED 4K TV in Living and Bedroom Areas* (TV Sizes Vary Per Floor Plan)
Samsung® 50" LED 4K TV on Televator in Living Area*
Dash Radio with Harman/JBL 180 Watt Sound System and Subwoofer
Xite Dash Radio with Apple CarPlay®, 9" Dual Monitors with Nav-N-Go Navigation System
Bose® Soundbar Sound System
Bluetooth Microphone for Dash Radio
Rear-View Color Monitor System with Audio
Side-View Cameras Displayed on Rear-View Monitor Screen
Winegard Digital Crank-up TV Antenna
Satellite Dish Prep on Roof
Two Bedroom Radio Speakers
TV Jack and 110 Volt Recept in Door Side Exterior Storage Compartment
High Definition Component Wiring
10 Bc Fire Extinguisher, Smoke Detectors, Propane and Carbon Monoxide Detector

#### OPTIONS

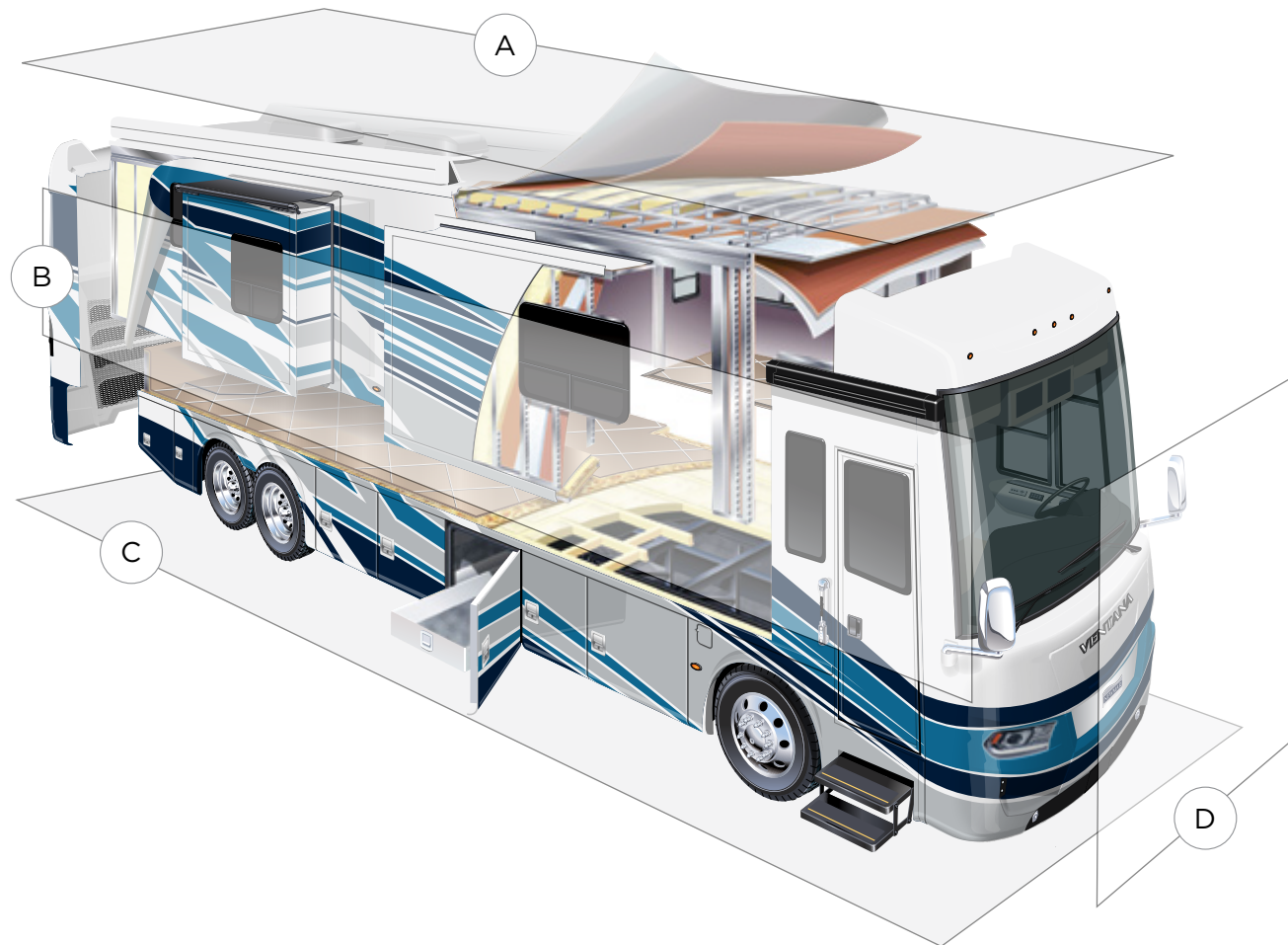
SiriusXM® Satellite Capability with Antenna (Does not include monthly subscription)*
Samsung® 43" 4K LED TV in Front Overhead



Exterior Entertainment Center in Sidewall with Samsung® 32" 4K LED TV and Bose® Soundbar
Exterior Entertainment Center in Sidewall with Samsung® 43" 4K LED TV and Bose® Soundbar
Exterior Entertainment Center in Storage Compartment with Samsung® 43" LED TV and Bose® Soundbar
Omniview NS360 Camera System*
Universal Remote Control
Universal Toll Module
Prep for Ground Tripod Satellite Dish on Off Door Side with A/B Switch
Two-19" Skyworth Monitors at Each Bunk*
WiFiRanger Denali/Spruce LTE
WiFi System Everest with Aspen Interior Router
Winegard Automatic Dome Satellite Dish-Std/HD, DIRECTV Std. and Bell Canada
Winegard Automatic Open Face Satellite Dish-HD and Bell HD TV
Winegard Automatic Open Face SWM Satellite Dish-DIRECTV Std/HD
Winegard In-Motion Dome Satellite Dish-Std/HD, DIRECTV Std. and Bell Canada
Winegard Rayzar Automatic Digital TV Antenna







## A. ROOF

Fiberglass Roof  
Batten Insulation  
A/C Ducting  
16" on Center Aluminum Rafter Framing  
Kraft Paper Vapor Barrier  
5/8" Bead Foam  
3/16" Panel  
Padded Vinyl Overlay

## B. SIDEWALL

Interior Wall Panel  
5/8" Bead Foam  
Kraft Paper Vapor Barrier  
Batten Insulation  
Composite One-Piece  
Gelcoat Exterior Sidewall  
Aluminum Framing

## C. FLOOR

Carpet/Tile  
Carpet Padding  
5/8" Floor Decking  
Batten Insulation  
16" on Center Wood Framing  
Polyethylene Moisture Barrier

## D. EXTERIOR

15K BTU Penguin™ Heat Pump Central  
Air Conditioner  
One-Piece Bonded Windshield  
Coated Aluminum Wheels  
Frameless, Double-Pane,  
Tinted Safety Glass Windows  
Side-Hinged Baggage Doors with  
Optional Pull-Out Tray  
Batten Insulation in Front and Rear Cap



# The Newmar Customer Experience

The Newmar Difference™ goes beyond our industry-leading motor coaches to provide you with an unrivaled ownership experience.



## Quality from the Start

Every Newmar is crafted one at a time by folks who have spent an average of eight years building them. And each coach we assemble must undergo more than 1,000 tests and checks before ever leaving our factory.



## Carefully Selected Dealers

We view our dealership network in terms of quality, not quantity. Each of our dealers acts as a partner in our shared mission to exceed your highest of expectations, for an ownership experience that's second to none from day one.



## Everything in One Place

As a Newmar owner, you'll find resources specific to your coach through Newgle, an easy-to-use knowledge base that houses everything from user guides to technical support documents.



## Friends for Life

Meet fellow owners through the Newmar Kountry Klub, a top social club for RV travelers that hosts rallies and other special events throughout the U.S. and Canada.



## Seamless Service

When you join the Newmar family, we pair you with a dedicated service specialist with expert knowledge of your exact coach. Our service specialists guarantee dealer warranty authorizations within four business hours and ship all in-stock parts the same day, free of charge.



## Rock-Solid Protection

All models include a one-year/unlimited mileage limited warranty and a five-year, non-transferable structural warranty that covers your coach's superstructure in the event it fails to perform. Ask your Newmar dealer for more details.

*Our Partners*

The Newmar Difference™ begins with suppliers dedicated to providing our customers with unrivaled quality, comfort, and support.



*BASF*

The Coatings division of BASF is a global expert in the development and production of innovative and sustainable OEM and refinish coatings. Coatings by BASF—solutions beyond your imagination.



Driven By You

*Freightliner  
Custom Chassis*

Freightliner Custom Chassis are renowned for their exceptional ride, excellent maneuverability, advanced technology, and nationwide 24/7 factory-direct support.



*Industrial Finishes*

Industrial Finishes has supported RV manufacturers for over four decades, offering paint products that deliver uncompromising quality and provide your coach with a true Masterpiece™ finish.



*RiverPark*

From Samsung® 4K TVs and Xite Infotainment systems to Bose® soundbars and JBL and Infinity premium audio systems, RiverPark helps you experience a higher level of technology in your Newmar coach.



*Spartan RV Chassis*

An American company with over 30 years of experience in designing and manufacturing the premier motorhome chassis, Spartan delivers superior performance, exceptional safety ratings, and industry-leading technology.





WHEN YOU KNOW THE DIFFERENCE<sup>SM</sup>