



Time Honored Design . . .



1990
Towables

*Aluminum Superstructure



Newmar Corporation:
A sound company backed by
22 years of experience.



TECHNOLOGY SURROUNDED BY TRADITION



Kountry Style — Volume IV



Fifth Wheel Galley/Dining Area

KA-O-64 Peacock Pearl

TIME HONORED DESIGN from a reliable company that's spent a lot of time in the past twenty-two years creating recreational vehicles for your camping and traveling pleasure. A well designed product is unaffected by the passing of time and is continuously in demand, and as history has proven, Kountry Aire is included in this exclusive list of products. You have insured yourselves and us of this year after year by returning to buy from a name you trust . . . KOUNTRY AIRE!

A traditional air of beauty surrounds you when you walk inside any vehicle in the Kountry Aire line up as these warm and inviting interiors illustrate. From front to rear, Kountry Aire's tradition of tasteful and practically designed living areas welcome you.

Professional, experienced designers and engineers carry **Time Honored Design** into every aspect of building all Kountry Aire recreational vehicles. They are experts who not only know all the technicalities of production, but are well-seasoned campers themselves and have a good understanding of the needs and wants of the avid RVer. Good practical design, eye-appeal, sound construction and reliability are the essential components of **Time Honored Design**, and Kountry Aire concentrates totally on all of them.

From the solid, dependable all aluminum superstructure to the subtle decorative accents inside and out, Kountry Aire is quality and offers a wide selection of floorplans, options and interior design choices. We at Newmar realize that you, our customers, have good ideas too and a desire to add the colors, options and components that will personalize an RV to your taste and satisfaction. So be our guest and select your **Time Honored Design** from Kountry Aire today!



Quality is #1 at Newmar Corporation, and our "Personal Touch" inspection of all products will insure you of that high quality before any RV ever leaves our plant.

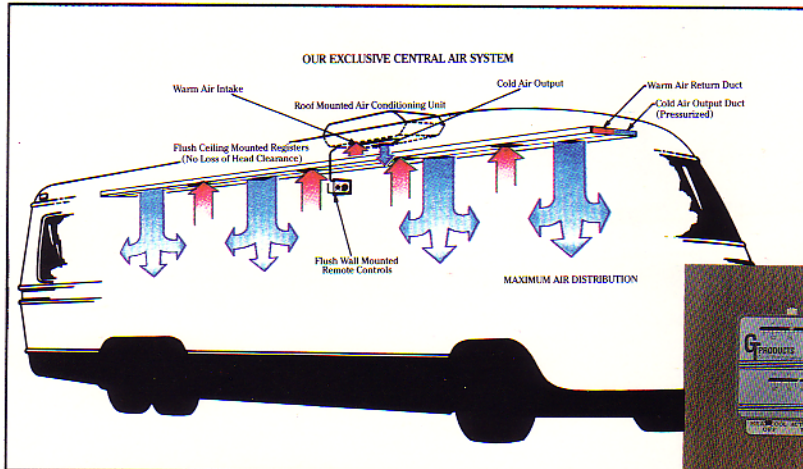
***5 Year Limited Warranty on Superstructure**

Newmar Corporation warrants the Superstructure which includes the following: The 12" I-beam Frame; the Aluminum Framing in the Sidewalls and Roof. If any part of the Superstructure fails to perform properly within 5 years from the date of purchase because of faulty workmanship or materials supplied by Newmar, it will be repaired without charge for either parts or labor by Newmar providing the proper claim procedures are followed. All other items excluding the Superstructure are covered under the standard Newmar 1 Year Limited Warranty. See Owner's Manual for details.

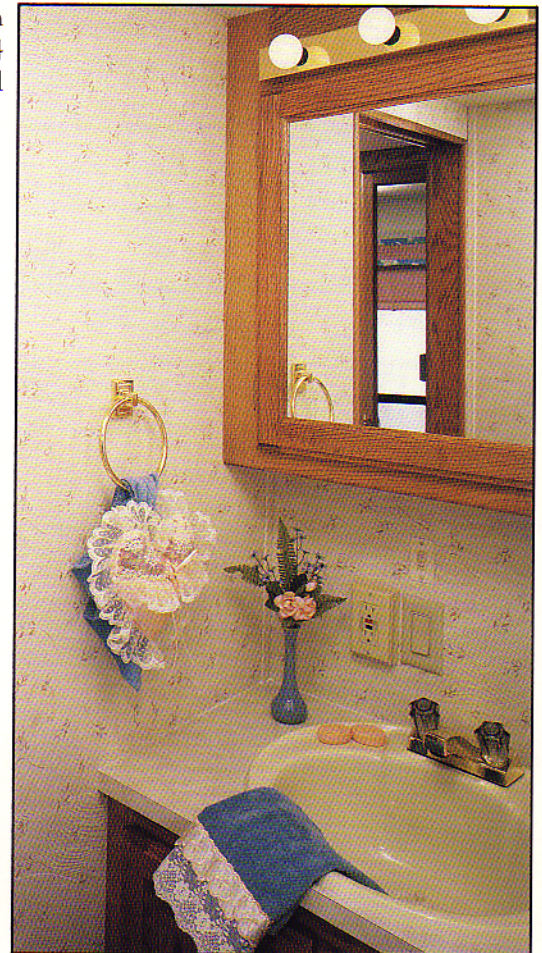
Fifth Wheel Bath
KA-O-64
Peacock Pearl



Optional Ceramic Countertop



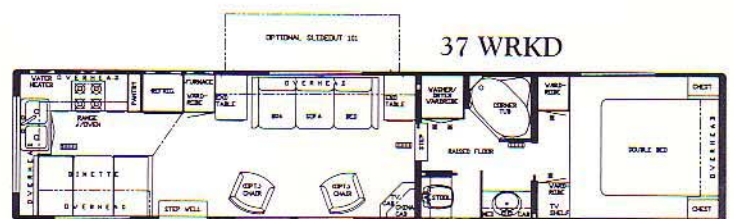
Thermostatically Controlled



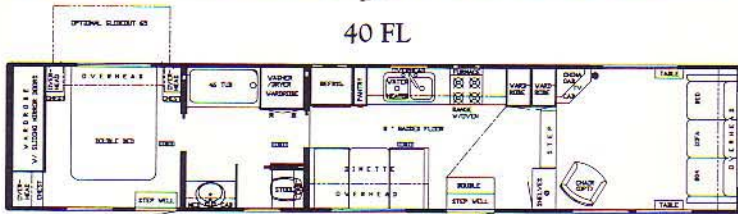
Fifth Wheel Bedroom KA-O-64 Peacock Pearl



37 WDFD



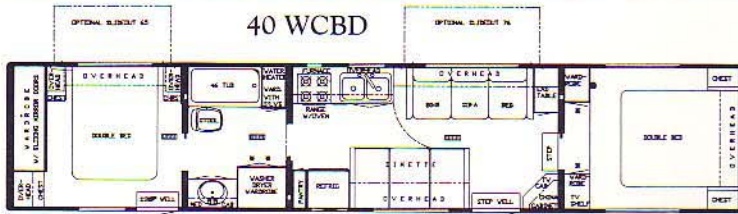
37 WRKD



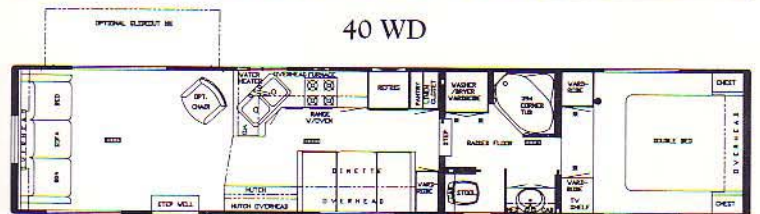
40 FL



40 SA



40 WCB



40 WD



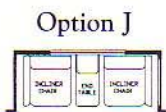
40 WDFD



40 WRKD



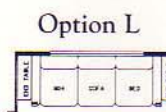
Option I



Option J



Option K



Option L



Option M



Option N



Option O



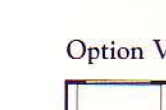
Option Q



Option S



Option X



Option V



Option U



Option W



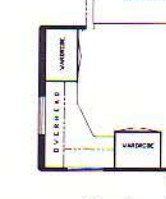
Option Y



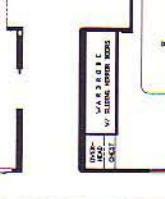
Option R



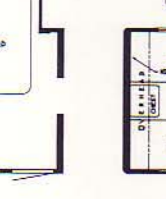
Option T



Option Z



Option AA

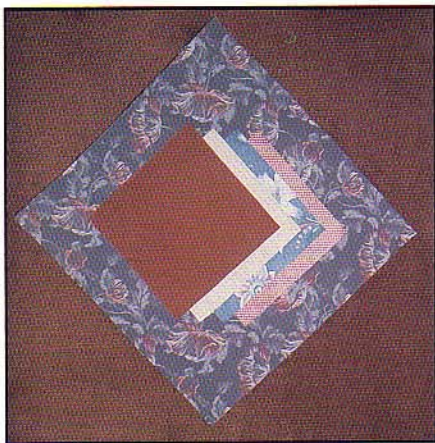


Option AB

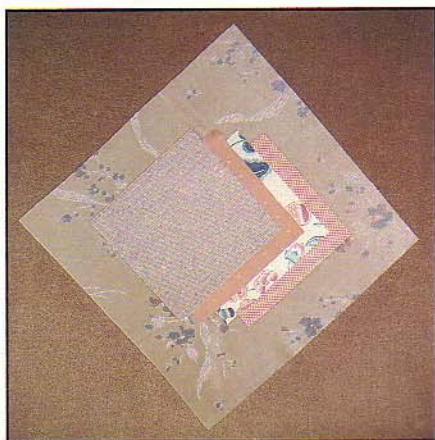
Fifth Wheel Specifications

Model	Gross Dry Weight	GVWR	Dry Hitch Weight	Dry Axle Weight	Tires	Wheels	Height w/AC	Length	Width	Options
29 WD	8,650	11,000	1,550	7,100	H78 x 15D	15 x 6	142-1/2"	31'11"	93"	A, D, E, P, Y, AB
29 WRKD	8,750	11,000	1,500	7,250	H78 x 15D	15 x 6	142-1/2"	31'11"	93"	A, F, P, Y, AB
32 WD	9,200	12,000	1,600	7,600	235/85 R16D	16 x 6	142-1/2"	33'9"	93"	A, C, D, E, F, R, Y, AB
32 WRKD	9,300	12,000	1,550	7,750	235/85 R16D	16 x 6	142-1/2"	33'9"	93"	A, B, I, J, K, R, Y, AB
35 RBD	9,550	13,000	1,600	7,950	235/85 R16E	16 x 6	142-1/2"	36'8"	93"	A, B, I, J, K, Q, Y, AB
35 WD	9,750	13,000	1,750	8,000	235/85 R16E	16 x 6	142-1/2"	36'8"	93"	A, C, D, E, I, J, K, M, O, S, Y, AB
37 FL	10,700	13,000	1,850	8,850	H78 x 15D	15 x 6	148-1/4"	38'11"	93"	A, D, T, U, V, W, X
37 WD	10,900	13,000	1,900	9,000	H78 x 15D	15 x 6	142-1/2"	38'11"	93"	A, D, E, I, J, K, R, Y, AB
37 WDFD	10,900	13,000	1,900	9,000	H78 x 15D	15 x 6	142-1/2"	38'11"	93"	C, D, E, I, J, K, M, O, S, Y, AB
37 WRKD	10,850	13,000	1,850	9,000	H78 x 15D	15 x 6	142-1/2"	38'11"	93"	A, B, L, M, O, S, Y, AB
40 FL	10,900	14,000	1,900	9,000	H78 x 15D	15 x 6	148-1/4"	40'3"	93"	A, D, T, U, V, W, X
40 SA	11,400	14,000	1,950	9,450	H78 x 15D	15 x 6	142-1/2"	40'3"	93"	A, D, E, I, J, K, Z, AB
40 WCB	11,400	14,000	1,900	9,500	H78 x 15D	15 x 6	142-1/2"	40'3"	93"	A, B, F, T, U, V, W, X, Y, AB
40 WD	11,100	14,000	1,950	9,150	H78 x 15D	15 x 6	142-1/2"	40'3"	93"	A, D, E, L, M, O, S, Y, AB
40 WDFD	11,100	14,000	1,950	9,150	H78 x 15D	15 x 6	142-1/2"	40'3"	93"	C, D, E, L, M, O, S, Y, AB
40 WRKD	11,050	14,000	1,900	9,150	H78 x 15D	15 x 6	142-1/2"	40'3"	93"	A, B, G, H, I, J, K, N, Q, AA, AB

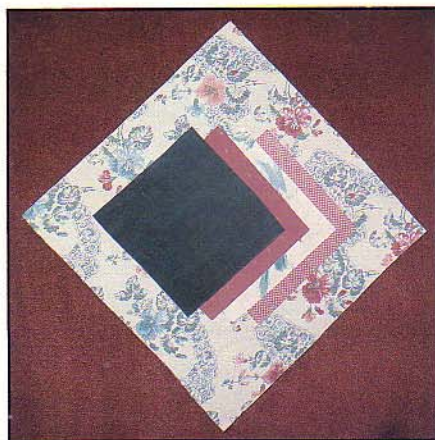
Approximate Weights. GVWR = Gross Vehicle Weight Rating. Charts are based on Standard Units.



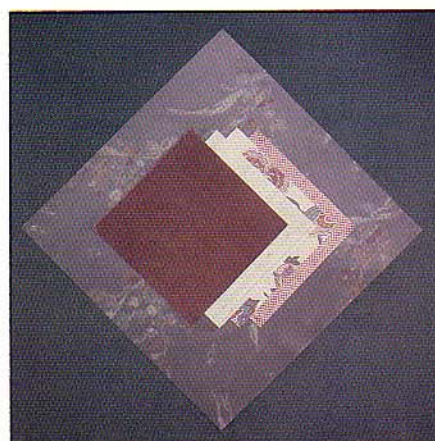
KA-O-64 Peacock Pearl



KA-O-65 Almond Cream



KA-O-66 Rose Blush



KA-O-67 Silver Cloud



Fifth Wheel Living Area with Slide-Out



KOUNTRY AIRE Towable Standards

FW	TT	AIR CONDITIONING, HEATING & LP GAS
S	S	Air Cond. Central Coleman 13.5 BTU w/Wall Thermostat (1)
S	S	Furnace 35M Electronic Ignition (Excalibur)
S	S	Hear Under Floor Ducted
S	S	LP Gas Bottles 2-30# Steel w/Auto. Reg.

APPLIANCES & ACCESSORIES

S	S	Bath Acc. (1-towel bar, tis. hldr., 1-towel ring, 1-robe hook)
S	S	Faucet for Lavatory Dbl. Handle Mixing (Brass)
S	S	Faucet for Shower Dbl. Handle w/Spigot (Brass)
S	S	Faucet for Sink Single Handle (Chrome)
S	S	Magazine Rack in Bath Area (where applic.)
S	S	Microwave Prep 22 1/4" W x 15" H
S	S	Range 4-Burner 22" w/Pilot Top & Oven
S	S	Range Cover Bi-Fold Deluxe
S	S	Range Hood w/Light & Fan
S	S	Refri. Norcold Double Door 683 3-Way (where applic.)
S	S	Sink Covers/Cutting Boards (2)
S	S	Sink Deep Dbl. Porcelain
S	S	Stool Aqua Magic Starlite
S	S	Tub or Shower Fiberglass
S	S	Tub or Shower Enclosure Door
S	S	Waste Basket
S	S	Water Heater Gas/Elec. 10 Gal.

CABINETS & FURNITURE

S	S	Bed Double (See Floor Plan)
S	NA	Cabinet China w/Decorative Glass Door(s) (See Floor Plan)
S	S	Cabinet Medicine w/Mirror Doors
S	S	Cabinet Night Stand(s) (See Floor Plan)
S	S	Cabinetry Oak w/Raised Panel Doors
S	S	Dinette w/Inner Springs & Fabric Covered Ends (See Floor Plan)
S	S	Door(s) under Dinette for Easy Access
S	S	Drawer Wood w/Silverware Tray
S	S	Drawers Wood Double Roller Guides
S	S	Headboards Decorative (where applic.)
S	S	Lifts for Convenient Storage Under Fixed Beds (ea.)
S	S	Pantry Slide-out (See Floor Plan)
S	S	Sofa Bed Free Standing (where applic.)
S	S	Spice Rack (Hand Crafted)

ELECTRICAL & LIGHTING EQUIPMENT

S	S	Battery 115 Amp Sears Die Hard Deep Cycle
S	S	Battery Box on Slides
S	S	Converter 50 Amp w/Charger
S	S	Light at Gate Valve Area
S	S	Light Exterior Patio w/Inside Switch
S	S	Light Fixture Deluxe Over Dinette
S	S	Light for Hookup Convenience
S	S	Lighting 12-Volt Fluorescent (w/Wall Switch)
S	S	Lights Tube Behind Glass Doors
S	S	Lights in Wardrobe w/Automatic Switches
S	S	Lights Running & Backup Recessed
S	S	Monitor Panel Deluxe w/Clock
S	S	Radio/Ant., AM/FM Stereo Cass., Clock & 4 Spkr. (CBD Models 6 Spkr.)
S	S	Recept. 110V GFI (interior & exterior)
S	S	Switch Shut-off for Bedroom Speakers
S	S	TV Antenna w/Power Booster & 2 Jacks
S	S	TV Cable Hook Up
S	S	TV Shelf/Mirror w/Remote Shut-off Switch (bedroom where applic.)

EXTERIOR ACCESSORIES

S	S	Bumper Rear Auto Style w/Storage Comp
S	S	Exterior Front & Rear Gelcoated Fiberglass End Caps
S	S	LP Gas Bottles in Concealed Compartment

FW	TT	EXTERIOR ACCESSORIES - Cont'd.
S	NA	Raised Floor Bath w/Large Carpeted Storage Area & Lights
S	S	Rubber Roof
NA	S	Step Double Manual
S	NA	Step Triple Manual
S	S	Storage Exterior Compartment(s)
S	S	Storage Exterior Slide Out Drawer 48"
S	NA	SS Carpeting in Storage Compartments

INTERIOR FEATURES

S	S	Cabiner Doors w/Decorative Etched Glass
S	S	Celing Woven Soft Touch
S	S	Door Frame Cushioned
S	S	Floor Covering, Carpet w/9/16" Deluxe Pad Throughout
S	S	Mirror(s) Bevelled & Etched w/Decorative Wood Frame
S	NA	Stand Up Area in Front Bedroom
S	S	Window Garnish Wood Grain (Residential Style)
S	S	Window Treatmt. Mini Blinds (kitchen & bath)
S	S	Window Treatmt. Roller Shades w/Drapes/Val. & Tie Backs (Bedroom)
S	S	Window Treatmt. Soft Shade Blinds w/Drapes/Val. & Tie Backs (Liv. area)

PLUMBING SYSTEMS

S	S	Hook-Up for City Water
S	S	Insulated Holding Tanks
S	S	Sewage Hose Holder
S	S	Tank Gray Water 48 Gal. (Approx.)
S	S	Tank Sewage Holding 48 Gal. (Approx.)
S	S	Water Capacity 42 Gal. (Approx.)
S	S	Water System Demand w/12V Pump & 5/8" Polybutylene Lines

RUNNING GEAR & CONSTRUCTION

NA	S	Axle 4" Drop
S	NA	Axle Straight (Triple 37' & Up)
S	S	Floor 1" Laminated Plywood
S	S	Frame Size 12" I-Beam
S	S	Insulation 1/4" Fome-Cor Exterior Sidewalls (w/Metal Sides)
S	S	Insulation R19 Fiberglass in Floor
S	S	Insulation R19 Fiberglass in Roof
S	S	Insulation Laminated 5/8" Foam in Sidewalls & Ceiling
S	S	Insulation R7 Fiberglass in Sidewalls
NA	S	Jack for Hitch (2,000 lb.)
S	NA	Jacks Stabilizer (set of 2) (29' & up)
NA	S	Jacks Stabilizer (set of 4)
S	S	Shock Absorbers
S	S	Skid Bars for Rear Bottom Protection
S	S	Spare Tire in Backup Slide Out Tray
S	S	Structure Aluminum Sidewalls & Roof
S	S	Underbelly Enclosed w/Lam. 5/8" Foam & Gate Valve Insp. Plate
S	S	Wheels 15" White Spoke

SAFETY FEATURES

S	S	Break Away Switch
S	S	Fire Extinguisher 5 BC
NA	S	Safety Chains
S	S	Smoke Detector

WINDOWS, DOORS, AWNINGS & VENTS

NA	S	Awning Front Recessed
S	S	Door Entrance Radius w/Screen w/Flush Latch & Dead Bolt Lock
NA	S	Door Secondary 26" Radius w/Dead Bolt Lock (where applic.)
NA	S	Door Woven Folding (where applic.)
S	S	Grab Handle
S	S	Vent in Bath Area w/Wall Switch 12V
S	S	Windows Radius Torque Tinted Safety Glass

KOUNTRY AIRE Towable Options

FW TT AIR CONDITIONING, HEATING & LP GAS

- ☐ ☐ Air Cond. Central Coleman 13.5 BTU w/Wiring & Wall Thermostat (Extra)
- ☐ ☐ NA Furnace 20M Electronic Ignition in Bedroom (Excalibur)
- ☐ ☐ NA Furnace 40M Electronic Ignition ILO Std. (Excalibur)
- ☐ ☐ LP Gas Bottles 2-30# Alum. w/Gauges ILO 30# Steel
- ☐ ☐ NA LP Gas Bottles 2-40# Alum. w/Gauges ILO 30# Steel
- ☐ ☐ NA LP Gas Bottles 2-40# Steel ILO 30# Steel
- ☐ ☐ LP See Level Gauges (set of 2)

APPLIANCES & ACCESSORIES

- ☐ ☐ Clothes Line in Tub/Shower (Retractable)
- ☐ ☐ Food Center Nutone (Blender)
- ☐ ☐ Ironing Board (where applic.)
- ☐ ☐ Microwave Oven Conv. 30" (Sharp) w/4 Burner Hot Plate ILO Std Range
- ☐ ☐ Microwave Oven Spacemaker GE
- ☐ ☐ Microwave Oven 22" (Sharp Carousel)
- ☐ ☐ Refri. Dometic 3801 AES ILO Norcold (3-Way)
- ☐ ☐ Refri. Dometic 4801 AES w/Ice Maker ILO Norcold (3-Way)
- ☐ ☐ Safe (where applic.)
- ☐ ☐ NA Shower Stall 36" ILO 38" Tub
- ☐ ☐ NA Shower Stall 36" ILO Corner Tub
- ☐ ☐ NA Tub 54" w/16" Linen Cab (ILO 27" washer/dryer WRB)
- ☐ ☐ NA Tub Garden-style ILO Corner Tub
- ☐ ☐ Washer & Dryer Sears 2-piece (See Floor Plans)
- ☐ ☐ Washer & Dryer Prep Plumbing, Recept. & Shelf (certain models)
- ☐ ☐ Water Heater Bypass Kit
- ☐ ☐ Water Heater Reignitor 12V
- ☐ ☐ Water Filtering System (Drink Dispenser & Ice Maker)

CABINETS & FURNITURE

- ☐ ☐ Air Mattress for Queen or Twin Beds
- ☐ ☐ Bed Queen (60" x 75") (where applic.)
- ☐ ☐ NA Bed Dbl. Island ILO Std. (WCBD & FL Models)
- ☐ ☐ NA Bed Twin ILO Std. (WCBD & FL Models)
- ☐ ☐ Bed Twin (32" x 75") ILO Double
- ☐ ☐ NA Bunk w/Desktop ILO Std. Rear Bedroom (WCBD-FL)
- ☐ ☐ NA Cabiner Mini Hutch w/Lights (where applic. w/slide out)
- ☐ ☐ Cabinetry Oak Hardwood w/Raised Panel Doors
- ☐ ☐ Chair Free Standing Pedestal (where applic.)
- ☐ ☐ Chair Swivel Rocker (where applic.)
- ☐ ☐ Chair Recliner w/Foot Rest
- ☐ ☐ NA Chairs Free Stding. Incliner w/End Table & Light in 91" Sl. Out ILO Sofa
- ☐ ☐ Counter Top Extension (where applic.)
- ☐ ☐ NA Deluxe Honeymoon Suite Bedroom W/robe & Chest
- ☐ ☐ Dinette Free Standing w/2 Chairs ILO Built-in
- ☐ ☐ Drawers Wood w/Metal Guides & Side Rollers
- ☐ ☐ NA Entertainment Center (where applic.)
- ☐ ☐ Sofa 75" w/End Table ILO 84" Sofa
- ☐ ☐ Table Dropleaf high-low for (coffee or din.)
- ☐ ☐ NA Wardrobe/Delete & Add Front Entrance Door 26" (where applic.)

ELECTRICAL & LIGHTING EQUIPMENT

- ☐ ☐ Battery 115 Amp Sears Die Hard Deep Cycle Extra
- ☐ ☐ Electrical Service 50 Amp
- ☐ ☐ NA Fan Ceiling (where applic.)
- ☐ ☐ NA Gen. 6.5kw Onan w/1 Remote Switch, Gas Tank, Auto. Changeover & Battery
- ☐ ☐ NA Gen. 6.5kw Honda 110V w/1 Remote Switch, Gas Tank, Auto. C/O & Battery
- ☐ ☐ NA Gen. 7.0kw Kohler w/1 Remote Switch, Gas Tank, Auto. Changeover & Battery
- ☐ ☐ NA Gen. Gasoline Tank
- ☐ ☐ NA Gen. Prep (Auto Changeover, 12V Cable, Remote Start Wire & Door)
- ☐ ☐ NA Intercom System
- ☐ ☐ NA Ceiling Light Prep, 110V w/Wall Switch
- ☐ ☐ Light Exterior Security (ea.) (Choose Location)
- ☐ ☐ Plug & Bracket for Tow Vehicle
- ☐ ☐ Stereo Deluxe AM/FM, Cass., Clock & Compact Disc ILO Std.
- ☐ ☐ Recept. GFI Protected 110V Exterior (extra)
- ☐ ☐ Recept. 110V Interior (extra) (Choose Location)
- ☐ ☐ Telephone Jack Extra Interior (Choose Location)
- ☐ ☐ Telephone Hook up w/1 Jack (Choose Location)
- ☐ ☐ TV Color AC 19" w/Remote Control
- ☐ ☐ TV Jack Exterior on Door Side
- ☐ ☐ TV Jack w/Splitter (extra) (Choose Location)
- ☐ ☐ VCR Prep (where applic.)

FW TT ELECTRICAL & LIGHTING EQUIPMENT - Cont'd.

- ☐ ☐ VCR w/Newmar Tape
- ☐ ☐ TV Satellite Dish 6' A&E (where applic.)

EXTERIOR ACCESSORIES

- ☐ ☐ Exterior Sides Gelcoated Fiberglass (per ft.)
- ☐ ☐ Ladder & Roof Rack
- ☐ ☐ Roof Gelcoated Fiberglass (per ft.)
- ☐ ☐ Slide Out 65" w/Lights (Choose Cbnt. & Furn. Selection) (where applic.)
- ☐ ☐ Slide Out 76" w/Lights (Choose Cbnt. & Furn. Selection) (where applic.)
- ☐ ☐ NA Slide Out 91" w/Lights (Choose Cbnt. & Furn. Selection) (where applic.)
- ☐ ☐ NA Slide Out 101" w/Lights (Choose Cbnt. & Furn. Selection) (where applic.)
- ☐ ☐ Stone Guard Pull Down Vinyl (Exclusive)
- ☐ ☐ Storage Exterior Slide Out Drawer 29"
- ☐ ☐ Storage Roof Pod 10 cu. ft.
- ☐ ☐ Storage Roof Pod 21 cu. ft.

INTERIOR FEATURES

- ☐ ☐ Bedspread Quilted w/Matching Shams & Accent Pillow Dbl. (ea.)
- ☐ ☐ Bedspread Quilted w/Matching Shams & Accent Pillow Queen (ea.)
- ☐ ☐ Bedspread Quilted w/Matching Shams & Accent Pillow Twin (1 pr.)
- ☐ ☐ Ceiling Perforated Vinyl
- ☐ ☐ Countertop Ceramic Tile
- ☐ ☐ Floor Covering, Hard Wood Parquet in Kitchen Area ILO Carpet
- ☐ ☐ Floor Covering, Vinyl in Kitchen Area ILO of Carpet

PLUMBING SYSTEMS

- ☐ ☐ Heat Pads for Holding Tanks 110V
- ☐ ☐ Sewage Holding Tank Rinse

RUNNING GEAR & CONSTRUCTION

- ☐ ☐ NA 12,000 lb. Hitch Plate & Bracket Center Mount (up to 12,000 lb. GVWR)
- ☐ ☐ NA 15,000 lb. Hitch Plate & Bracket Center Mount
- ☐ ☐ NA Jacks Stabilizer Extra (set of 2)
- ☐ ☐ Jacks Stabilizers 12V Power Twins A&E (set of 2) ILO Std. (without Remote)
- ☐ ☐ Jack(s) for Hitch 12V Power
- ☐ ☐ Jack(s) for Hitch Prep 12V Wire
- ☐ ☐ NA Stabilizer for Fifth Wheel Pin (Excl. Built-in)
- ☐ ☐ Suspension w/Mor Ryde TA-1 w/Tandem Axle Models
- ☐ ☐ NA Suspension w/Mor Ryde TA-1 w/Triple Axle Models
- ☐ ☐ Tires Radial 16" D Range ILO Std. (ea.) (where applic.)

SAFETY FEATURES

- ☐ ☐ Customer Pick Up
- ☐ ☐ Fire Extinguisher 10 BC ILO 5 BC
- ☐ ☐ LP Leak Detector
- ☐ ☐ Security System A&E
- ☐ ☐ State Seals

WINDOWS, DOORS, AWNINGS & VENTS

- ☐ ☐ Awning Per Window Matching Side Awning (A&E 9000) (Choose Location)
- ☐ ☐ Awning Per Window Matching Side Awning (A&E 8500) (Choose Location)
- ☐ ☐ Awning Rear Recessed (where applic.)
- ☐ ☐ Awning Side A&E 8500 (up to 21')
- ☐ ☐ Awning Side A&E 9000 (up to 21')
- ☐ ☐ Awning Tension Rafter for Side Awning
- ☐ ☐ Door Bell
- ☐ ☐ Skylight in Bathroom w/Soft Shade
- ☐ ☐ Vent in Ceiling w/Wall Switch 12V (Choose Location)
- ☐ ☐ Vent/Ceiling 12V Fantastic 3-Spd. w/Wall Thermostat w/power opener (Choose Location)
- ☐ ☐ Window ILO Bevelled Mirrors in Bedroom (where applic.)
- ☐ ☐ Window Picture 48x48 ILO 29x48 at Dinette (w/free standing dinette only)
- ☐ ☐ NA Window Picture 48x48 ILO 22x48 At Cabover
- ☐ ☐ Window Picture 36x48 ILO 29x48 At Dinette
- ☐ ☐ Windows Safety Glass Storms (Except Slide Out)
- ☐ ☐ Windows Safety Glass Storms (for Slide Out only)

LEGEND

FLOOR PLANS

CBD — Center Bath/Dinette
 FL — Front Lounge
 FKD — Front Kitchen/Dinette
 RBD — Rear Bath/Dinette
 SA — Side Aisle
 WCBD — Walk-Thru Center Bath/Dinette
 WD — Walk-Thru Bath/Dinette
 WRKD — Walk-Thru Rear Kitchen/Dinette
 WDFD — Walk-Thru Bath/Dinette w/Front Door

SPECIFICATIONS

Dbl. — Double
 FW — Fifth Wheel
 ILO — In Lieu Of
 NA — Not Available
 O — Option
 S — Standard
 TT — Travel Trailer
 V — Volt
 W/W — White Wall



A&E Systems Inc.



hydro flame



SHARP

Newmar Corporation features appliances and components by these quality names to insure you of years of safe and trouble-free operation and enjoyment.



New Style Pantry

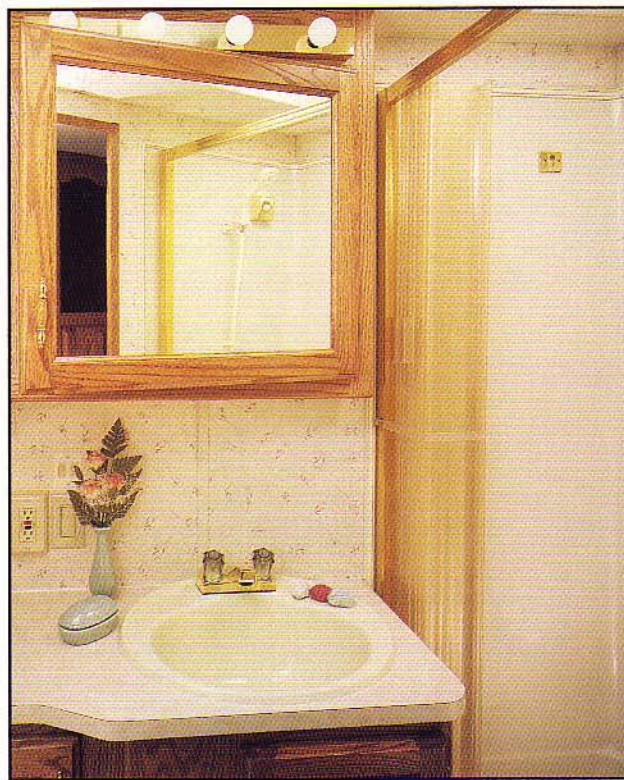
Newmar Kountry Klub

"Don't forget to check out the Klub . . . the Newmar Kountry Klub that is. All you need to be eligible is to be the proud owner of any one of the fine Newmar products!"

Travel Trailer Bedroom KA-O-66 Rose Blush



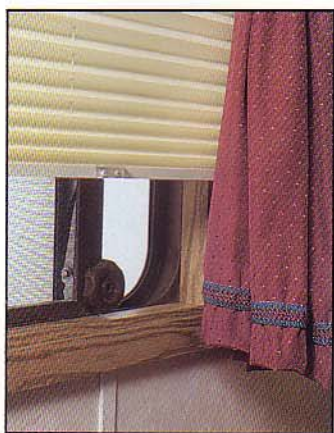
Travel Trailer Bath KA-O-66 Rose Blush



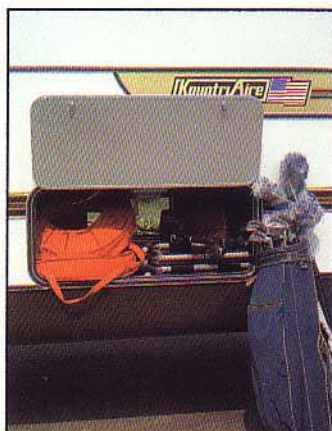


Travel Trailer Living Area

KA-O-66 Rose Blush

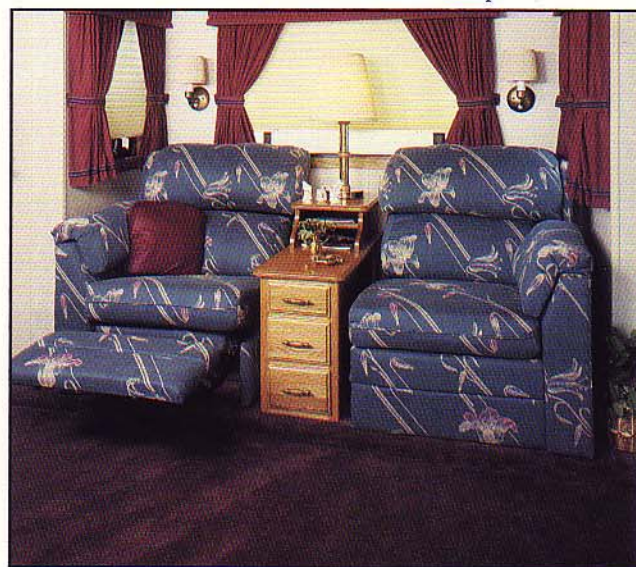


Correlated Wood
Window Casings



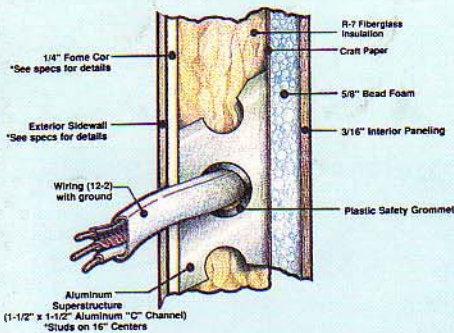
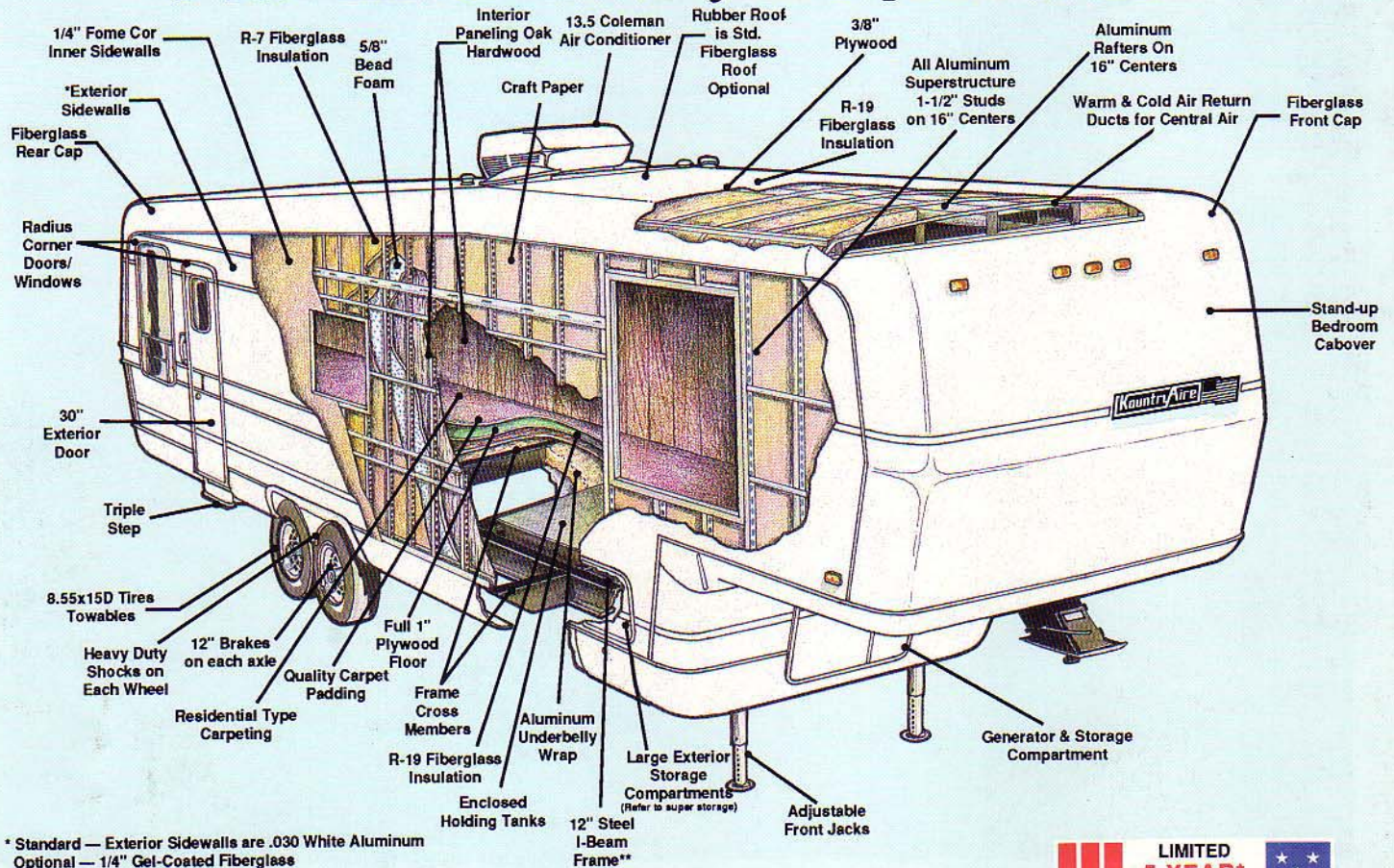
Standard Exterior
Storage Compartment

Optional Double Incliners with
Solid Oak Chest and Brass Lamp



The Ultimate All-Season RV

"5 Year Limited Warranty on Superstructure"



Composite "R" Factors

Sidewalls	11.6
Ceiling	24.6
Floor	26.1

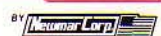
***Aluminum Superstructure**



Your nearest Kountry Aire dealer:



Towables



Newmar Corporation, 355 North Delaware
Nappanee, IN 46550-0030, (219) 773-7791

Scheduled plant tours Monday - Friday

Prices and specs are subject to change without written notice
at Newmar's discretion with no obligation.