

KOUNTRY Star S/S

The S/S stands for
"Super Storage"!

87



420% Increased Storage Space!

The Kountry Star S/S Class A motorhome by Newmar Corporation offers incredible storage room for the avid RV'er with an unbelievable increase of 420%. All storage is below-floor and protected from the elements, yet totally out of the way of the living areas. This also makes completely enclosed and heated holding tanks standard for year 'round camping. The S/S has been aerodynamically designed for better road performance and less wind resistance.

Increased Living Space / One Level Floor!

The S/S concept not only gives you more room to store all that essential gear and equipment, but allows more room inside as well. A full 90-1/4" interior width with 6'-6" interior height in all living areas are standard. Combine this room with the convenient one level floor from the cockpit clear to the back of the motorhome, and you have a living area that's not only generous in space, but eliminates stepping up or down from the cockpit level to the living area level.

See your nearest Kountry Star dealer today for a closer look at the S/S model Class A. You'll see why we call it "Super Storage".

All Aluminum Superstructure for Strength!

Like all members of the Kountry Star family of recreational vehicles, the S/S doesn't scrimp on construction. With an all aluminum superstructure, you can rely on years of dependable performance from an RV that's built to last after miles of traveling pleasure.

Beauty and Elegance Inside and Out!

From the sporty beige and burgundy exterior with radiused windows and radiused corners for improved aerodynamics, to the elegant interiors with tasteful designer color correlations to choose from, the S/S stands out among the rest. The details inside make Kountry Star popular with women AND men, like the solid oak kitchen cabinet doors with the genuine in-laid cane panels and solid oak cabinet doors thru-out. Add to this color-coordinated draperies and roller shades, and easy-to-clean, vinyl-clad oak and decorative paneling, and you've got an RV that any family would be proud to call their second home!



The S/S packed



The S/S unpacked

FEATURES THAT WILL BENEFIT YOUR FAMILY!!

EXTERIOR

- Std 420% Increased Storage Space (S/S model Class A)
- Std Carpeted Storage Areas (S/S model Class A)
- Std All Aluminum Superstructure
- Std 26" Wide entrance doors for easier, safer entry and exit (towables)
- Std Grab handle for safer entry
- Std 24" Radius entrance step
- Std Dual 20 lb. LP tanks with auto changeover (towables)
- Std 12-Volt battery (in addition to chassis battery on motorized)
- Std Nightlight package
- Std R-5 insulation
- Std Travel awning (front — travel trailers only)
- Std Front utility light for convenience in checking or filling LP tanks or hitching up in nighttime conditions (towables)
- Std Designer beige exterior metal with rich burgundy and red accent stripes
- Std Color-keyed spoked wheels (towables)
- Std Chrome wheel covers (motorized)
- Std Whitewall tires (towables)
- Std Radius corners and roofline for added aerodynamics
- Std Radius windows — more eye appealing
- Std Heated enclosed holding tanks for year-around camping capabilities

INTERIOR

- Std Full 90 1/4" interior width for more room and comfort
- Std 6'6" interior height for the tall stars in your family (towables and Class A)
- Std Stand-Up Bedroom Area (fifth wheels only)
- Std 6'9" interior height in mini homes
- Std Flex-O-Lator dinette seating
- Std Deluxe sleeper sofa and other quality furniture in residential styling and comfort
- Std Quality color-coordinated draperies and roller shades
- Std Four beautiful color decor packs to choose from
- Std Long-lasting, easy-to-clean vinyl-clad oak and decorative paneling
- Std Solid oak doors (with genuine inlaid cane panels in kitchen/dining area)
- Std Large double porcelain sinks and matching porcelain oven/range
- Std Generous interior storage space and wardrobes
- Std Large pantry will accept all sizes and shapes of food containers
- Std Refrigerator and furnace with direct-start ignition
- Std Large picture window (towables)
- Std Larger 54-gallon above-floor fresh water tank (towables)
- Std No obstruction under sink — extra storage

Rose Quartz
AS7-32



4 Standard Color Decor Packages

Mocha Chip
AS7-35

Misty Pewter
AS7-34

Peach Pearl
AS7-33

KOUNTRY
Star S/S

BY **Newmar Corp.**

Your nearest Kountry Star Dealer:



Newmar Corporation
P.O. Box 30 — 355 N. Delaware
Nappanee, IN 46550-0030
(219) 773-7791

Prices and spec's are subject to change without written notice at Newmar's discretion with no obligation.



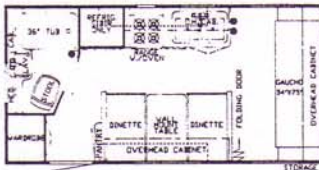
KOUNTANY

Star

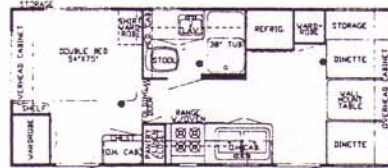
BY **Newmar Corp.**

1987 TRAVEL TRAILERS

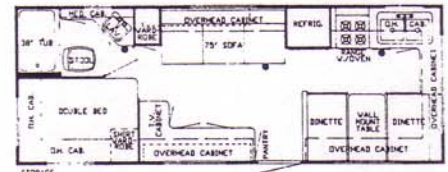
19' REAR BATH DINETTE



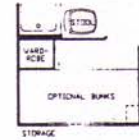
23' CENTER BATH DINETTE



25' FRONT KITCHEN DINETTE

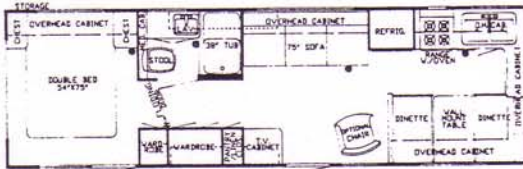


OPTION

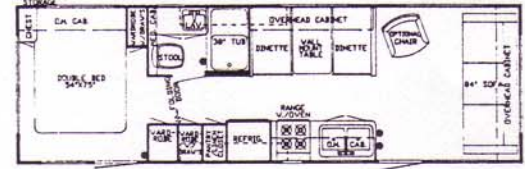


OPTION

29' FRONT KITCHEN DINETTE

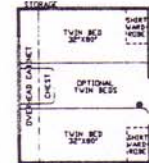
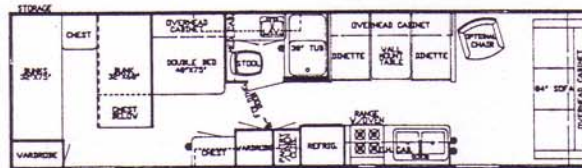


29' CENTER BATH DINETTE



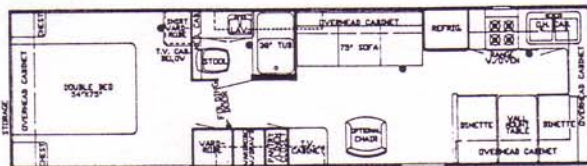
OPTION

33' CENTER BATH BUNK

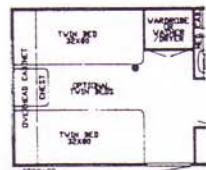
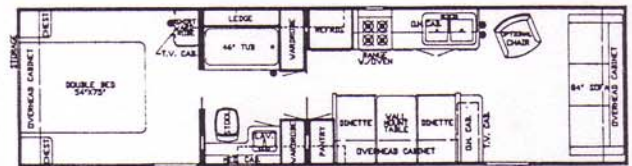


OPTION

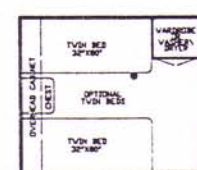
33' FRONT KITCHEN DINETTE



35' CENTER BATH DINETTE



OPTION



OPTION



Newmar Corporation
P.O. Box 30
Nappanee, IN 46550-0030

PRICES AND SPECS ARE SUBJECT TO CHANGE WITHOUT WRITTEN
NOTICE AT **NEWMAR'S** DISCRETION WITH NO OBLIGATION.

ACCOMMODATIONS

Flexilator Dinette * Full Bath w/Tub Shower Combination

KITCHEN

Combination LP/Electric RV106 Refrigerator * 4-Burner Range * 12V Range Hood w/Light, Fan * Porcelain Double Bowl Sink w/Cover * Picture Window at Dinette (N/A on 23 CBD & 33 CBB) * Pantry/Shelves w/Large front lip

INTERIOR DECOR PACKAGES

Rose Quartz (AS7-32), Peach Pearl (AS7-33), Misty Pewter (AS7-34), Mocha Chip (AS7-35)

HEATING/COOLING

Electronic Ignition, Duct Heat (19'-25' 19,500 BTU's, 29'-35' 25,000 BTU's) * Roof Reinforced for Air Conditioner

SELF-CONTAINMENT

54 Gal Polyethylene Fresh Water Tank (42 Gal on 19 RBD) * 26 Gal Polyethylene Grey, 40 Gal Sewage Tank, * Demand Water System w/12V Pump * City Water Hook-up * Enclosed & heated holding tanks

ELECTRICAL

30 AMP 110V Service * 40 AMP Converter w/charger * 12V Incandescent Lights w/clear lens * Exterior Recept * Exterior Lights * Wire for Stereo * Wire for 4 Speakers * Wire for TV Antenna * TV Jack * Battery 80 AMP

EXTERIOR

1 Piece Metal Roof * 26" Exterior Door w/Window * Standard Roof Vents w/Smoke Dome * Aluminum Frame Structure * Radius Corners * Radius Windows

TIRES

7.75 x 15 Whitewall (8.55 x 15 - 35 CBD) * Load Range "C"

DIMENSIONS	19 RBD	23 CBD	25 FKD	29 CBD	29 FKD	33 FKD	33 CBD	35 CBD
Gross Dry Weight (ap)	3250	3775	4110	4700	4740	5240	5240	5475
Hitch Dry Weight	*	*	*	700	*	*	*	*
Axle Dry Weight	*	*	*	4000	*	*	*	*
GVWR**	*	*	*	*	*	*	*	*
Height	106*	106"	106"	106"	106"	106"	106"	106"
Width	96*	96"	96"	96"	96"	96"	96"	96"
Length	19'11"	23'5"	25'8"	29'7"	30'1"	33'2"	33'2"	34'8"
Sleeping Accomodations	4	4	6	6	6	6	9	6

* Not Available at time of printing

** Gross Vehicle Weight Rating

POPULAR OPTIONS: TRAVEL TRAILERS

Fome Cor Insulation
Dead Bolt Lock
30 lb. Bottles
L.P. Bottle Cover
Rear Travel Awning
Side Awning - A/E
Chrome Bumper Cover
Spare Tire/Carrier
Bi-Fold range cover
ABS tub surround
Bath decor package

Counter top extension
Occasional Chair
Cabinet Bunk
TV antenna
Twin, Queen Beds
Bed Spreads
Roof Air, 11,000 &
13,500 BTU
Heat strip for air
32,000 BTU Furnace
(29'-35')
Washer & Dryer (Where App)

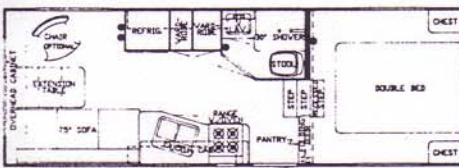
8' Double door refer
Stabilizer Jacks(4)
Magic Chef Microwave
10 Gal. Gas/Elec Water
Heater (29'-35')
Power roof vent
Power bath vent
Monitor panel
Am/Fm stereo - 12 Volt
Antenna & 4 speakers
Extra TV Jacks



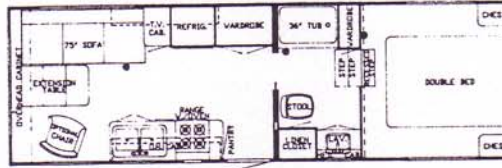
KOUNTRY Star BY Newmar Corp.

1987 FIFTH WHEELS

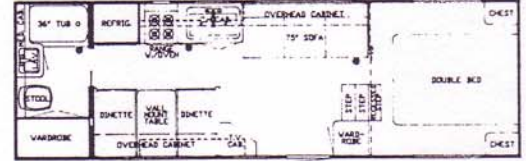
23' FRONT SIDE BATH



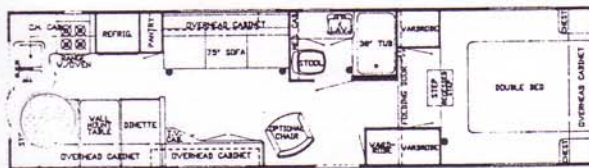
26' WALK THRU



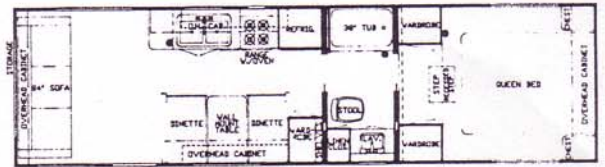
26' REAR BATH DINETTE



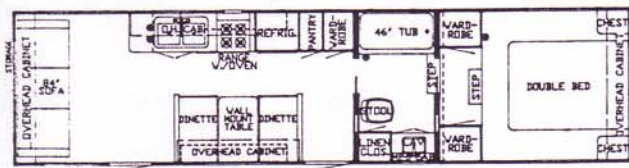
29' REAR KITCHEN DINETTE



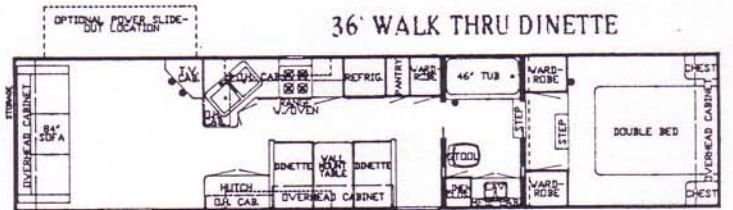
29' WALK THRU DINETTE



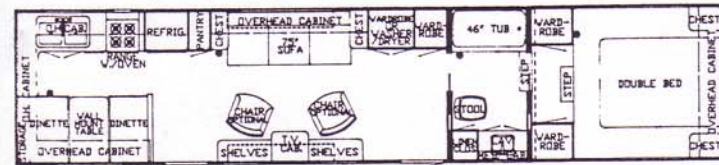
32' WALK THRU DINETTE



36' WALK THRU DINETTE



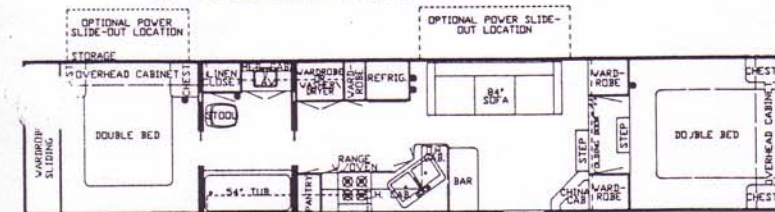
36' REAR KITCHEN DINETTE



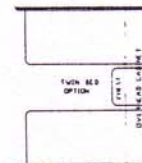
40' WALK THRU DINETTE



40' WALK THRU CENTER BATH



* TWIN BEDS - OPTIONAL ON ANY FIFTH WHEEL



ACCOMMODATIONS

Flexilator Dinette(N/A 23 FSB, 26 W, 26 RBD, 40 WCB) * Full Bath w/Tub Shower Combination (N/A 23 FSB)

GALLEY

Combination LP/Electric RV106 Refrigerator * 4-Burner Range * 12V Range Hood w/Light, Fan * Porcelain Double Bowl Sink w/Cover * Picture Window at Dinette (N/A on 23 FSB & 40 WCB) * Pantry/Shelves w/Large front lip

INTERIOR DECOR PACKAGES

Rose Quartz (AS7-32), Peach Pearl (AS7-33), Misty Pewter (AS7-34), Mocha Chip (AS7-35)

HEATING/COOLING

Electronic Ignition, Duct Heat (23'-26' 19,500 BTU's, 29'-40' 25,000 BTU's) * Roof Reinforced for Air Conditioner

SELF-CONTAINMENT

42 Gal Polyethylene Fresh Water Tank (47 Gal on 32 WD, 36 RKD, 36 WD, 40 WCB, 31 Gal on WD) * 26 Gal Polyethylene Grey, 40 Gal Sewage Tank, * Demand Water System w/12V Pump * City Water Hook-up * Enclosed and Heated holding tanks

ELECTRICAL

30 AMP 110V Service * 40 AMP Converter w/charger * 12V Incandescent Lights w/clear lens * Exterior Recept * Exterior Lights * Wire for Stereo * Wire for 4 Speakers * Wire for TV Antenna * TV Jack * Battery 80 AMP

EXTERIOR

1 Piece Metal Roof * 26" Exterior Door w/Window * Standard Roof Vents w/Smoke Dome * Aluminum Frame Structure * Radius Corners * Radius Windows

TIRES

7.75 x 15 Whitewall (8.55 x 15 - 36 RKD, 36 WD) * Load Range "C"

DIMENSIONS	23 FSB	26 RB	26 WT	29 WD	29 RKD	32 WD	36 WD	36 RKD	40 WCB	40 W*
Gross Dry Weight (ap)	4125	4500	4500	5350	5350	5510	6220	6220	6625	6625
Hitch Dry Weight	*	*	*	1250	1250	*	*	*	*	*
Axle Dry Weight	*	*	*	4100	4100	*	*	*	*	*
GVWR**	*	*	*	*	*	*	*	*	*	*
Height	116"	116"	116"	116"	116"	133"	133"	133"	133"	133"
Width	96"	96"	96"	96"	96"	96"	96"	96"	96"	96"
Length	23'10"	26'5"	26'5"	29'11"	29'11"	32'3"	36'10"	36'10"	39'10"	39'10"
Sleeping Accomodations	4	6	4	6	6	6	6	6	6	6

* Not Available at time of printing

** Gross Vehicle Weight Rating

POPULAR OPTIONS: FIFTH WHEELS

Fome Cor Insulation
Dead Bolt Lock
30 lb. Bottles
L.P. Bottle Cover
Rear Travel Awning
Side Awning - A/E
Chrome Bumper Cover
Spare Tire/Carrier
Bi-Fold range cover
ABS tub surround
Bath decor package
Washer/Dryer (Where App)

Counter top extension
Occasional Chair
Cabinet Bunk
TV antenna
Twin, Queen Beds
Bed Spreads
Roof Air, 11,000
& 13,500 BTU
Heat strip for air
32,000 BTU Furnace
(29'-35')
Power Slide out(36'/40')

8' Double door refer
Stabilizer Jacks
Magic Chef Microwave
10 Gal. Gas/Elec Water
Heater (29'-35')
Power roof vent
Power bath vent
Monitor panel
Am/Fm stereo - 12 Volt
Antenna & 4 speakers
Extra TV Jacks
Plate & Brackets

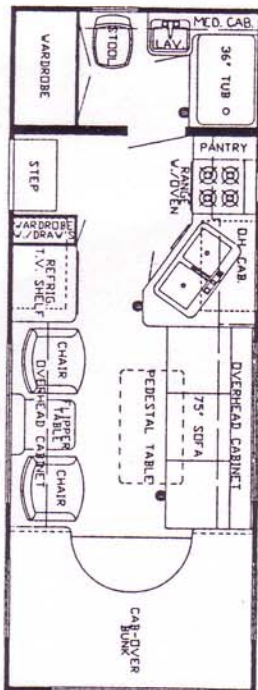


KOUNTRY

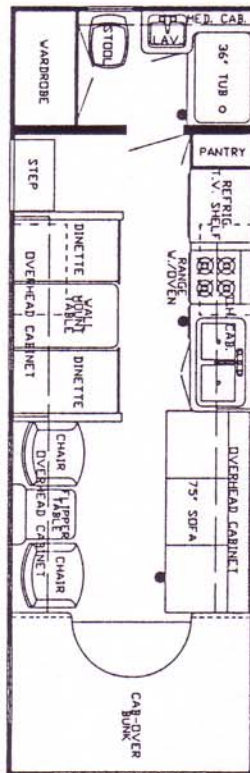
Star BY **Newmar Corp.**

1987 Mini-Homes

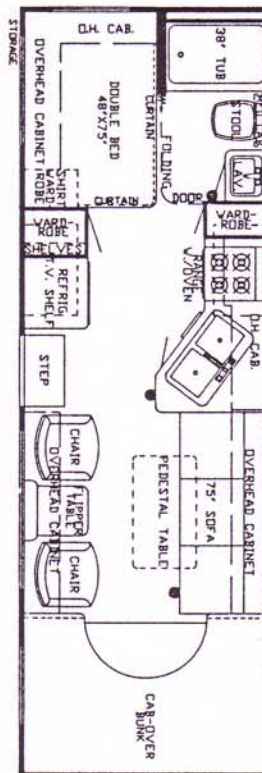
24 RB



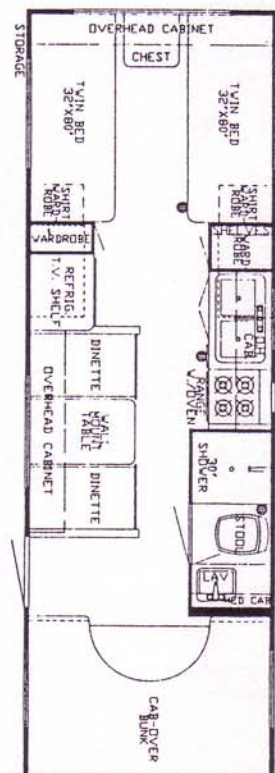
26 RBD



26 SB



26 FSB



DIMENSIONS

Gross Dry Weight
Front Axle Weight
Rear Axle Weight
Gvwr
Interior/Exterior Height w/air
Width
Length
Wheel Base
Sleeping Accomodations

24 RB
8,620
3,140
5,480
10,500
7' / 128"
96"
24' 1"
146
4

26 RBD
*9,600
*3,600
*6,000
10,500
7' / 128"
96"
26' 5"
179
6

26 SB
9,630
3,700
5,930
10,500
7' / 128"
96"
26' 5"
179
6

26 FSB
*9,600
*3,600
*6,000
10,500
7' / 128"
96"
26' 5"
179"
6

*Approx Weights



Newmar Corporation
P.O. Box 30
Nappanee, IN 46550-0030

PRICES AND SPECS ARE SUBJECT TO CHANGE WITHOUT WRITTEN
NOTICE AT NEWMAR'S DISCRETION WITH NO OBLIGATION.

KOUNTRY STAR MINI HOMES STANDARD EQUIPMENT

AIR CONDITIONING, HEATING & LP GAS

Conditioning Prep * Heat Ducted * Furnace 19.5M Electronic Ignition (24'-26') * LP Gas Tank 15 Gal.

APPLIANCES & ACCESSORIES

Sink Porcelain (Bone) * Lavatory Sink Rectangular (Bone) * Sink Cover Laminated - 1 * ABS Tub/Shower w/Curtain (Bone)
* Microwave Prep 15 1/2"h x 22 1/4"w * Range 4-Burner 16" w/Top Pilot/Oven Porcelain * Range Hood w/Light & Fan *
Refrigerator Sibir RV 106 2-way *

CABINETS & FURNITURE

Bed Double (75") * Headboards Decorative * Sofa Bed * Cabinet Medicine * Cabinet Night Stand * Cabinetry Radius
Corner Wood Grain w/Hard Wood Frame Doors * Catches Friction * Doors under Dinette for Easy Access * Drawer Roller
Guides * Spice Rack * Dinette w/Flex-a-lator & Fabric Covered Ends * Table Between Barrel Chairs

CHASSIS FEATURES

Power Brakes * Cruise Control * Gasoline Fuel Capacity 35 Gal (Chevy), 42 Gal (Ford) * Heater/Air Conditioner High
Output Automotive * Power Steering * Tilt Steering Wheel * Tinted Windshield * Transmission Automatic

ELECTRICAL & LIGHTING EQUIPMENT

Battery 80 AMP * Battery Automotive * Battery Isolator * Converter 40 AMP w/Charger * Electrical Service 30 AMP *
Generator Prep (wire & door) * Lights Backup * Light Exterior w/Inside Switch * Lights Running Surface Mount * Lighting 12
Volt Incandescent * Radio AM/FM Stereo w/Cassette 4 Speakers * Recept 110v GFI (interior & exterior) * TV Prep (wire & 1
jack)

EXTERIOR ACCESSORIES

Bumper Front Auto Style * Bumper w/Sewer Hose Storage * Mirrors Exterior * Roof One Piece Aluminum * Step Single
Manual * Storage Compartment under Bed w/Exterior Door * Storage Exterior Compartment (1)

INTERIOR FEATURES

Cabinet Doors w/Decorative Etched Glass * Carpet w/Pad Throughout * Ceiling Vinyl Clad * Mirror w/Decorative Wood
Frame * Paneling Monterey Oak Vinyl Clad w/Accent Walls * Paneling Textured Light Color in Bedroom * Paneling
Decorative Vinyl in Bath Area * 7' Interior Height * Privacy Drapes (lined) for Windshield * Window Treatment Textured
Roller Shades w/Tie Back Drapes/Valance * Window Treatment Mini Blinds Kitchen & Bath Windows

PUMPING SYSTEMS

Tank Gray Water 25 Gal * Tank Sewage Holding 25 Gal. * Water Capacity 42 Gal * Water System Demand with 5/8"
Polybutylene Lines * Hook-Up for City Water

RUNNING GEAR & CONSTRUCTION

Floor 5/8" Plywood * Insulation R5 Fiberglass * Insulation Laminated 5/8" Foam in Sidewalls & Ceiling * Shock Absorbers *
Spare Tire Carrier * Structure Aluminum 16" Centers Sidewalls & Roof * Tires Radial - Ford Chassis * Tires Polyester -
Chevy Chassis * Wheel Covers Decorative Deluxe

SAFETY FEATURES

Fire Extinguisher 5 BC * Seat Belts * Smoke Detector

WINDOWS, DOORS, AWNINGS & VENTS

Awning Rail * Door Vinyl Folding * Door Entrance 26" * Door Screen * Grab Handle * Vent in Roof Non-Power w/Smoked
Dome (2 or 4) * Windows Radius Torque Safety Glass * Window Radius Picture 30" x 42" at Dinette

KOUNTRY STAR OPTIONS

Foam Cor Insulation
4.0 K/W Onan Generator
Chrome Bumper Cover
ABS Tub Surround
Roof Rack & Ladder
Double Steps
11,000 BTU Roof Air
32,000 BTU Furnace
6 Gal. Water Heater W/Auto Ign
nitor Panel
LP Leak Detector

Dead Bolt Lock
Deluxe Drink Tray
Sofa in lieu of Dinette
Bath Decor Package
Ford Chassis (460)
Bed Spread - Double
13,500 BTU Roof Air
8' Double Door Refrigerator
Power Bath Vent
T.V. Antenna W.Power
Bi-Fold Range Cover

Aluminum Running Boards
Side Awning - A/E
Spare Tire/Deluxe Cover
Counter Top Extension
Fiberglass Sides
Bed Spread - Twin
Heat Strip for Air
Magic Chef Microwave
Power Roof Vent
Extra T.V. Jack